

Senior Exit Surveys

2005, 2006, 2007

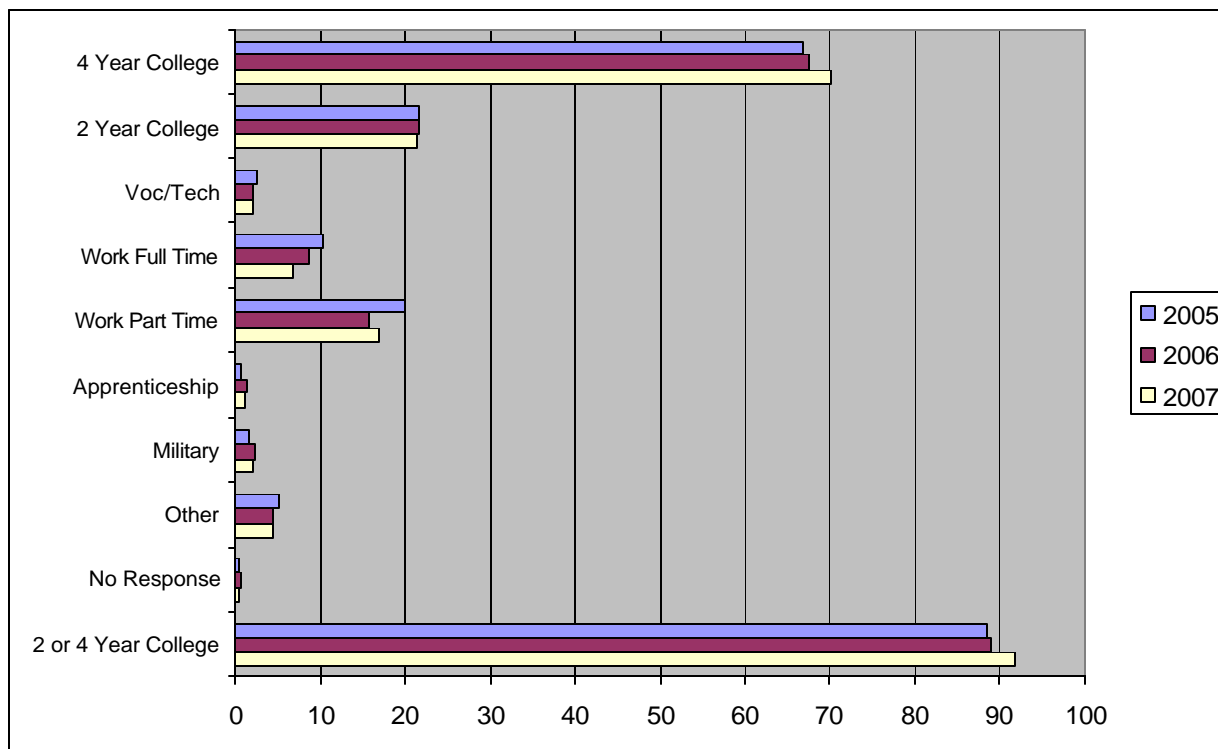


Arlington Public Schools

Countywide Comparison

1. What area(s) do you plan to pursue immediately after high school? (mark all that apply)

***Percentage may exceed 100% as seniors can mark multiple responses.

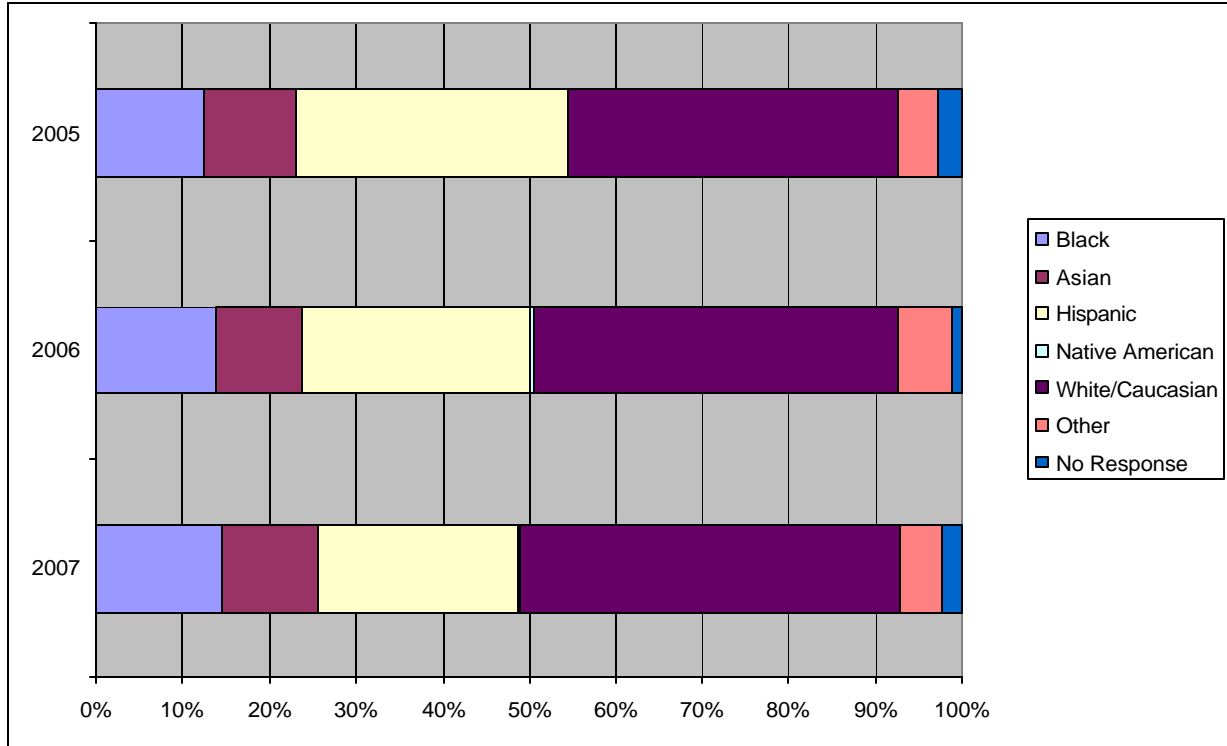


	n=957		n=1049		n=1021	
Responses	2005 Frequency	2005 Percent	2006 Frequency	2006 Percent	2007 Frequency	2007 Percent
4 Year College	641	67.0	708	67.5	718	70.3
2 Year College	207	21.6	226	21.5	219	21.4
Voc/Tech	24	2.5	23	2.2	21	2.1
Work Full Time	100	10.4	90	8.6	69	6.8
Work Part Time	190	19.9	166	15.8	172	16.8
Apprenticeship	7	0.7	16	1.5	11	1.1
Military	15	1.6	25	2.4	22	2.2
Other	50	5.2	46	4.4	46	4.5
No Response	4	0.4	8	0.8	4	0.4
2 or 4 Year College (Combined)	848	88.6	934	89.0	937	91.7

Arlington Public Schools—Countywide Comparison
2005, 2006, 2007

All graphs compare percentages.
Data provided by LifeTrack Services, Inc.

2. Ethnic Origin:

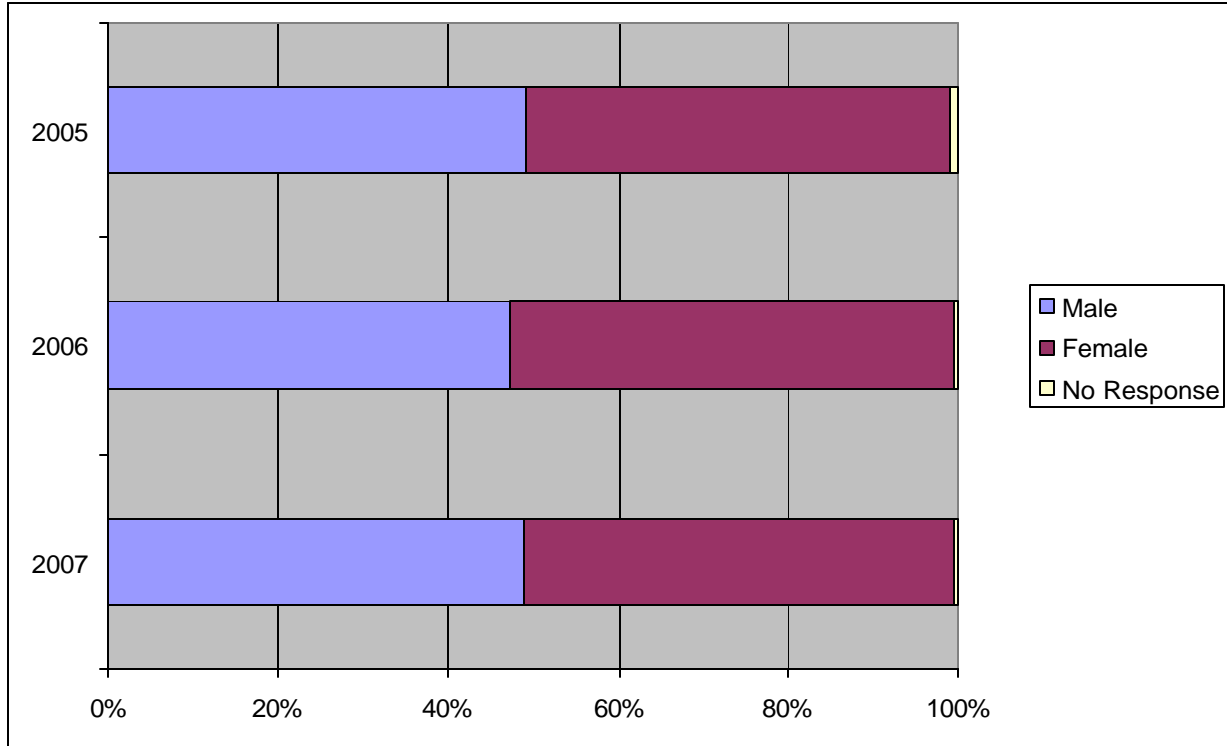


	n=957		n=1049		n=1021	
Responses	2005 Frequency	2005 Percent	2006 Frequency	2006 Percent	2007 Frequency	2007 Percent
Black	119	12.4	145	13.8	149	14.6
Asian	101	10.6	103	9.8	112	11
Hispanic	300	31.3	277	26.4	235	23
Native American	0	0	5	0.5	3	0.3
White/Caucasian	367	38.3	441	42	449	44
Other	44	4.6	66	6.3	50	4.9
No Response	26	2.7	12	1.1	23	2.3

Arlington Public Schools—Countywide Comparison
2005, 2006, 2007

All graphs compare percentages.
Data provided by LifeTrack Services, Inc.

3. Gender:

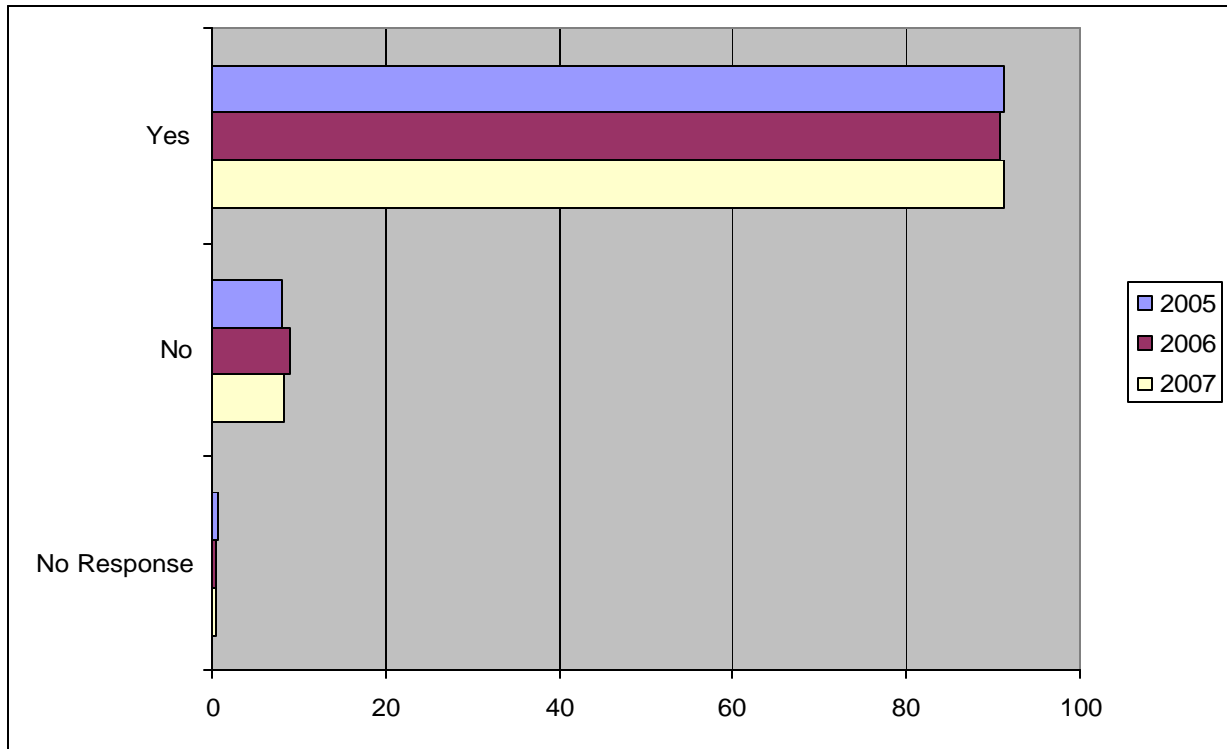


	n=957		n=1049		n=1021	
Responses	2005 Frequency	2005 Percent	2006 Frequency	2006 Percent	2007 Frequency	2007 Percent
Male	470	49.1	494	47.1	499	48.9
Female	477	49.8	551	52.5	518	50.7
No Response	10	1	4	0.4	4	0.4

Arlington Public Schools—Countywide Comparison
2005, 2006, 2007

All graphs compare percentages.
Data provided by LifeTrack Services, Inc.

4. Were core classes (English, math, social studies, science) meaningful and did they meet your educational needs for your future?

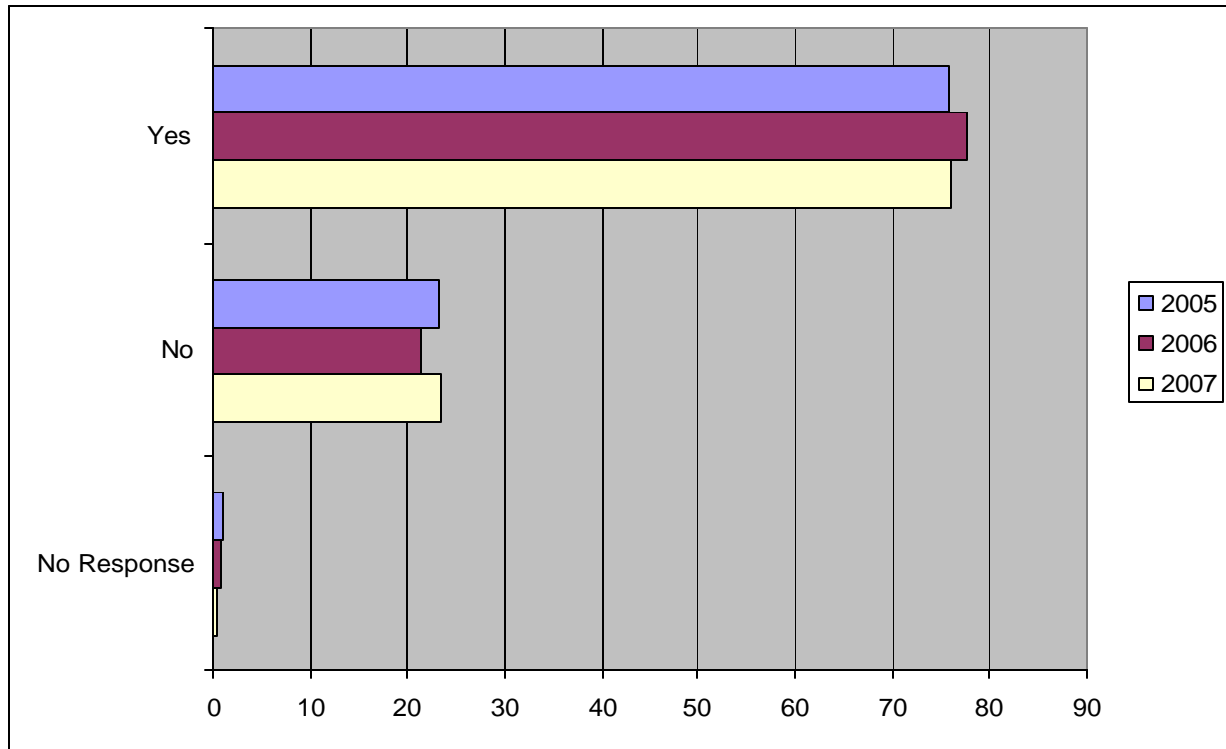


	n=957		n=1049		n=1021	
Responses	2005 Frequency	2005 Percent	2006 Frequency	2006 Percent	2007 Frequency	2007 Percent
Yes	873	91.2	952	90.8	931	91.2
No	77	8	93	8.9	85	8.3
No Response	7	0.7	4	0.4	5	0.5

Arlington Public Schools—Countywide Comparison
2005, 2006, 2007

All graphs compare percentages.
Data provided by LifeTrack Services, Inc.

5. Were teachers and/or counselors helpful in the selection of a path to follow after graduation?

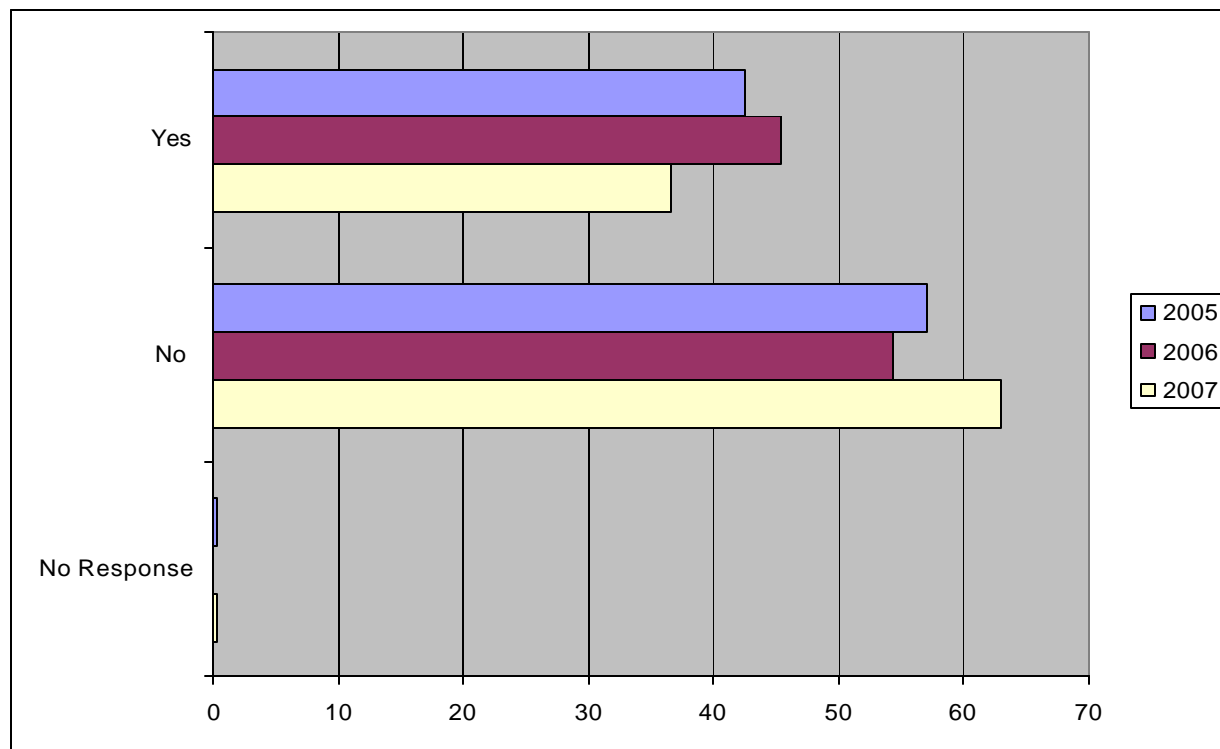


	n=957		n=1049		n=1021	
Responses	2005 Frequency	2005 Percent	2006 Frequency	2006 Percent	2007 Frequency	2007 Percent
Yes	725	75.8	815	77.7	777	76.1
No	222	23.2	225	21.4	239	23.4
No Response	10	1	9	0.9	5	0.5

Arlington Public Schools—Countywide Comparison
2005, 2006, 2007

All graphs compare percentages.
Data provided by LifeTrack Services, Inc.

6. Did you use the Career Center while in high school?

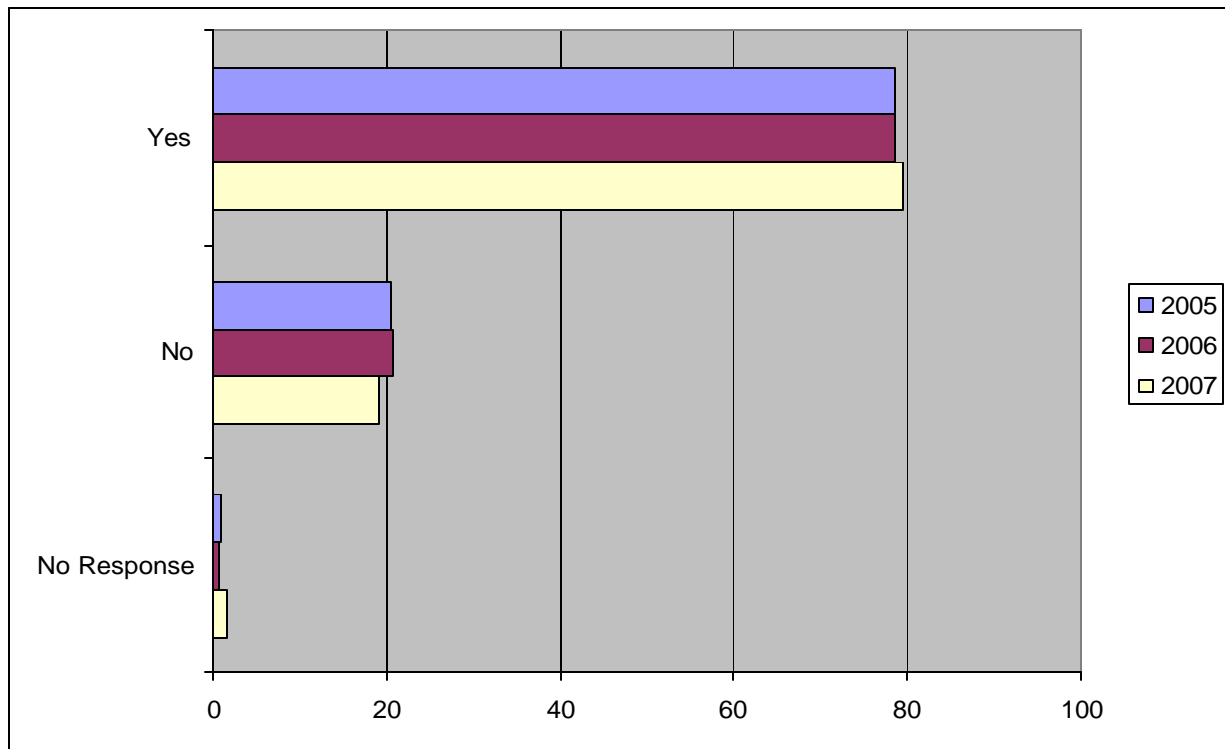


	n=957		n=1049		n=1021	
Responses	2005 Frequency	2005 Percent	2006 Frequency	2006 Percent	2007 Frequency	2007 Percent
Yes	408	42.6	477	45.5	375	36.7
No	546	57.1	570	54.3	643	63
No Response	3	0.3	2	0.2	3	0.3

Arlington Public Schools—Countywide Comparison
2005, 2006, 2007

All graphs compare percentages.
Data provided by LifeTrack Services, Inc.

7. Did your high school make learning exciting and encourage you to continue your education?

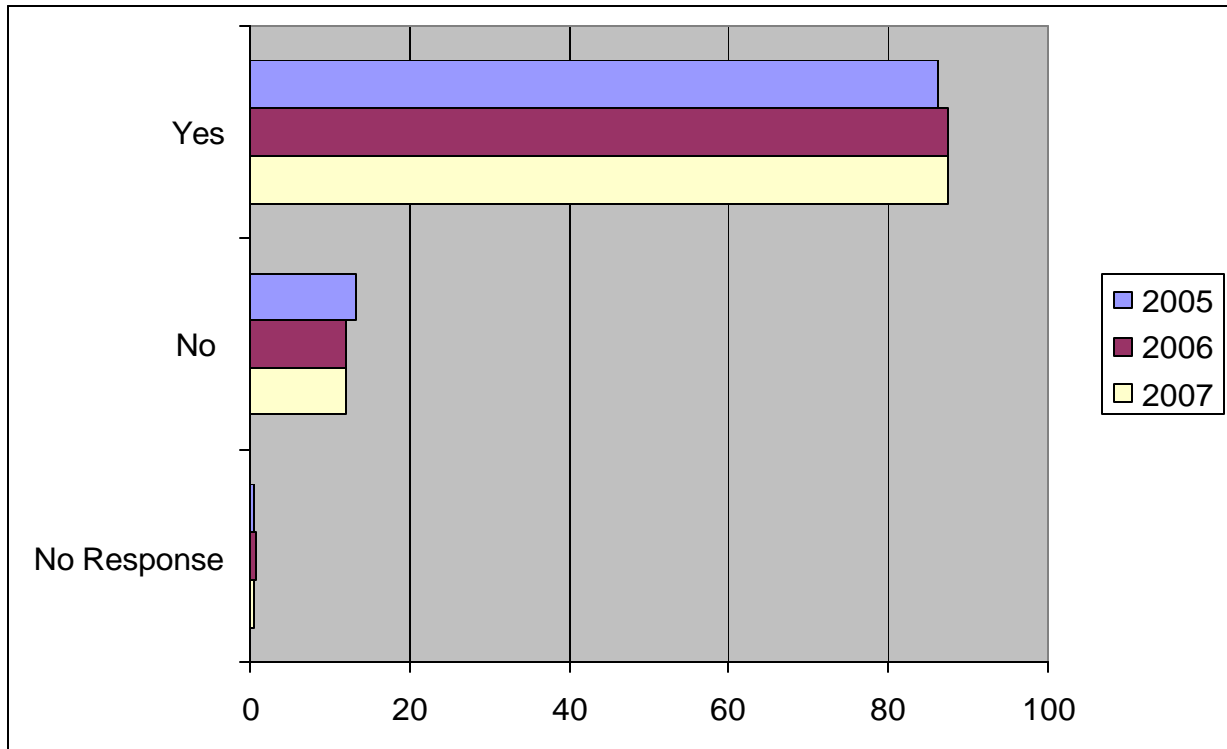


	n=957		n=1049		n=1021	
Responses	2005 Frequency	2005 Percent	2006 Frequency	2006 Percent	2007 Frequency	2007 Percent
Yes	752	78.6	825	78.6	812	79.5
No	195	20.4	217	20.7	194	19
No Response	10	1	7	0.7	15	1.5

Arlington Public Schools—Countywide Comparison
2005, 2006, 2007

All graphs compare percentages.
Data provided by LifeTrack Services, Inc.

8. Were you offered challenging courses at your high school?

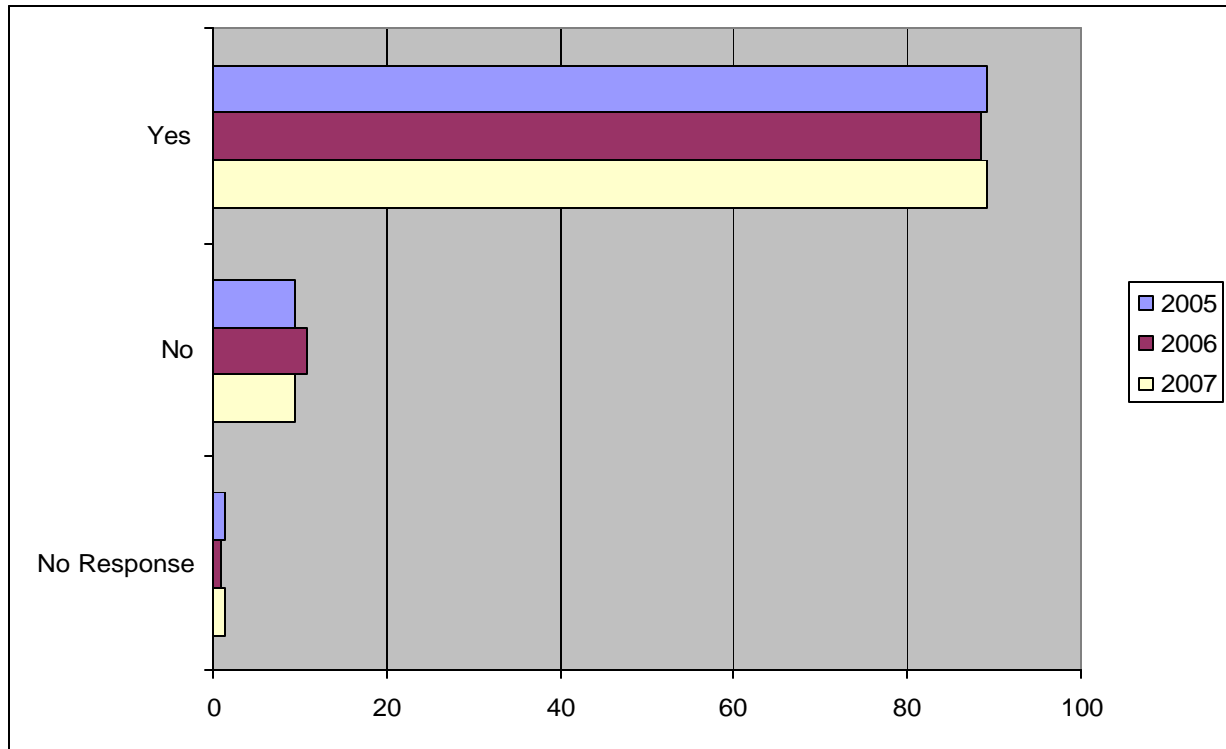


	n=957		n=1049		n=1021	
Responses	2005 Frequency	2005 Percent	2006 Frequency	2006 Percent	2007 Frequency	2007 Percent
Yes	825	86.2	917	87.4	892	87.4
No	127	13.3	125	11.9	124	12.1
No Response	5	0.5	7	0.7	5	0.5

Arlington Public Schools—Countywide Comparison
2005, 2006, 2007

All graphs compare percentages.
Data provided by LifeTrack Services, Inc.

9. Would you recommend your high school to others?

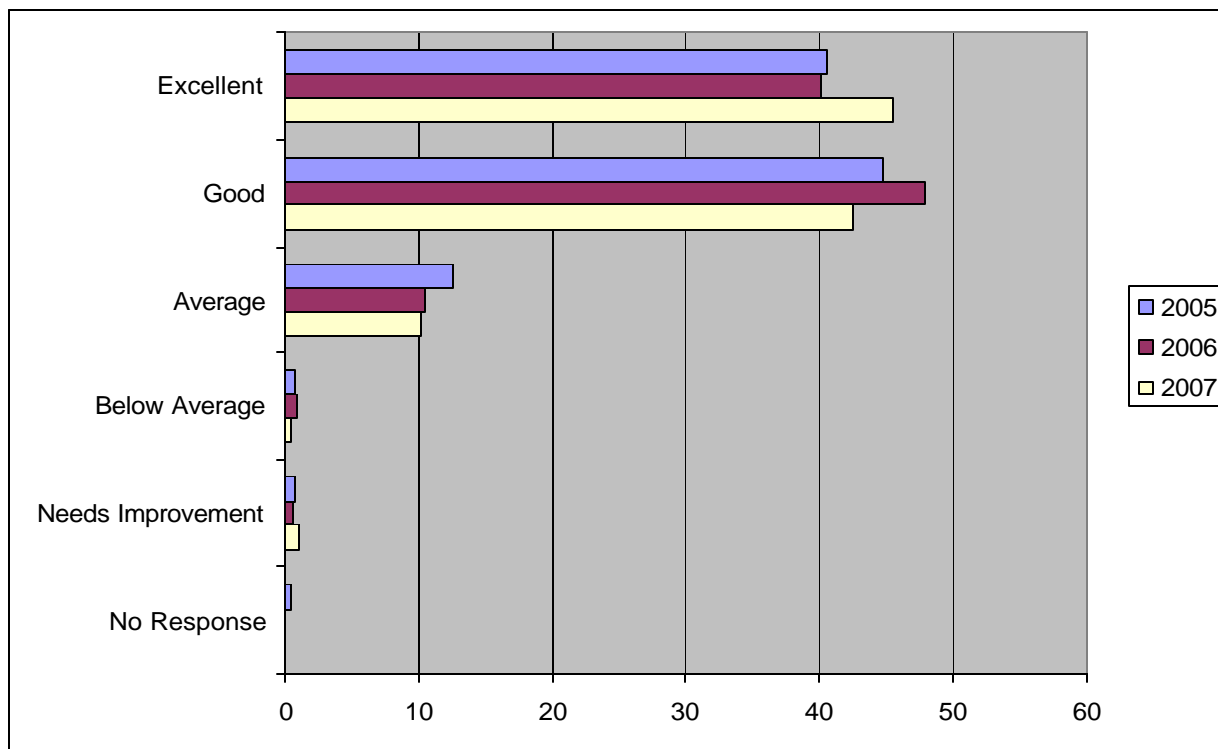


	n=957		n=1049		n=1021	
Responses	2005 Frequency	2005 Percent	2006 Frequency	2006 Percent	2007 Frequency	2007 Percent
Yes	853	89.1	928	88.5	911	89.2
No	91	9.5	112	10.7	97	9.5
No Response	13	1.4	9	0.9	13	1.3

Arlington Public Schools—Countywide Comparison
2005, 2006, 2007

All graphs compare percentages.
Data provided by LifeTrack Services, Inc.

10. The quality of academic education at your high school.

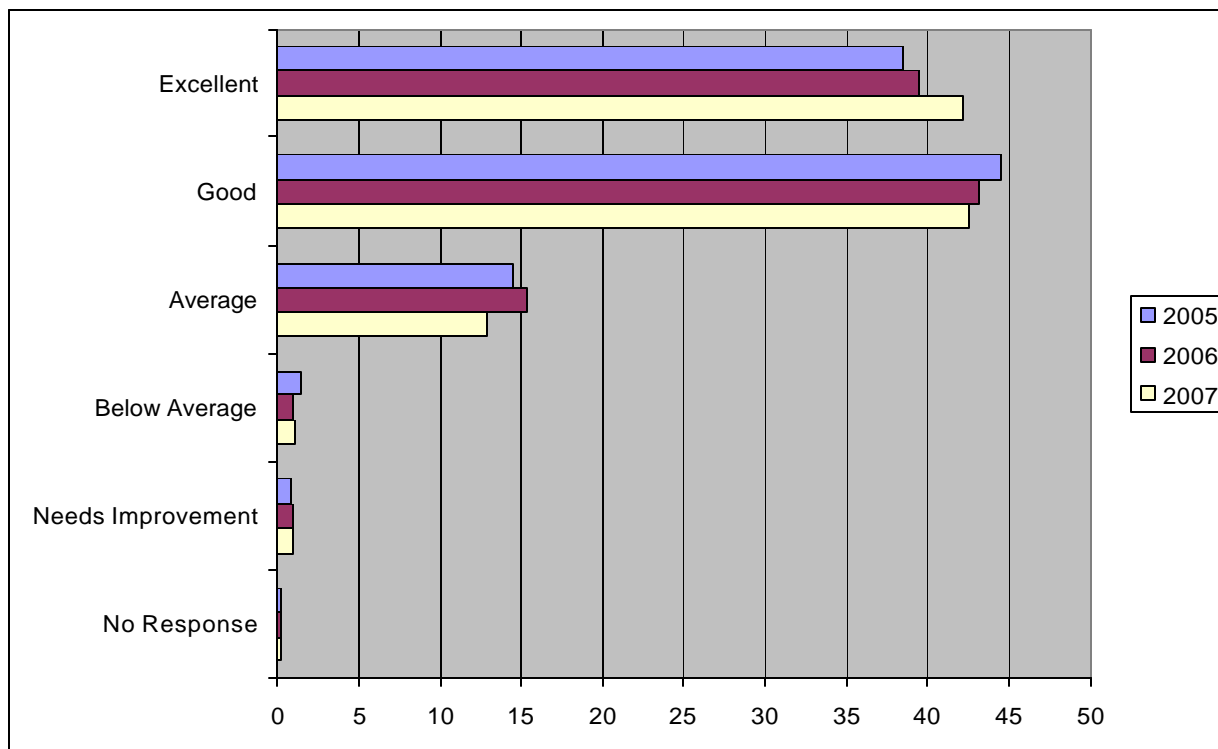


	n=957		n=1049		n=1021	
Responses	2005 Frequency	2005 Percent	2006 Frequency	2006 Percent	2007 Frequency	2007 Percent
Excellent	389	40.6	421	40.1	465	45.5
Good	429	44.8	502	47.9	435	42.6
Average	120	12.5	109	10.4	104	10.2
Below Average	8	0.8	9	0.9	4	0.4
Needs Improvement	7	0.7	6	0.6	11	1.1
No Response	4	0.4	2	0.2	2	0.2

Arlington Public Schools—Countywide Comparison
2005, 2006, 2007

All graphs compare percentages.
Data provided by LifeTrack Services, Inc.

11. Teachers held high standards and expected quality work.

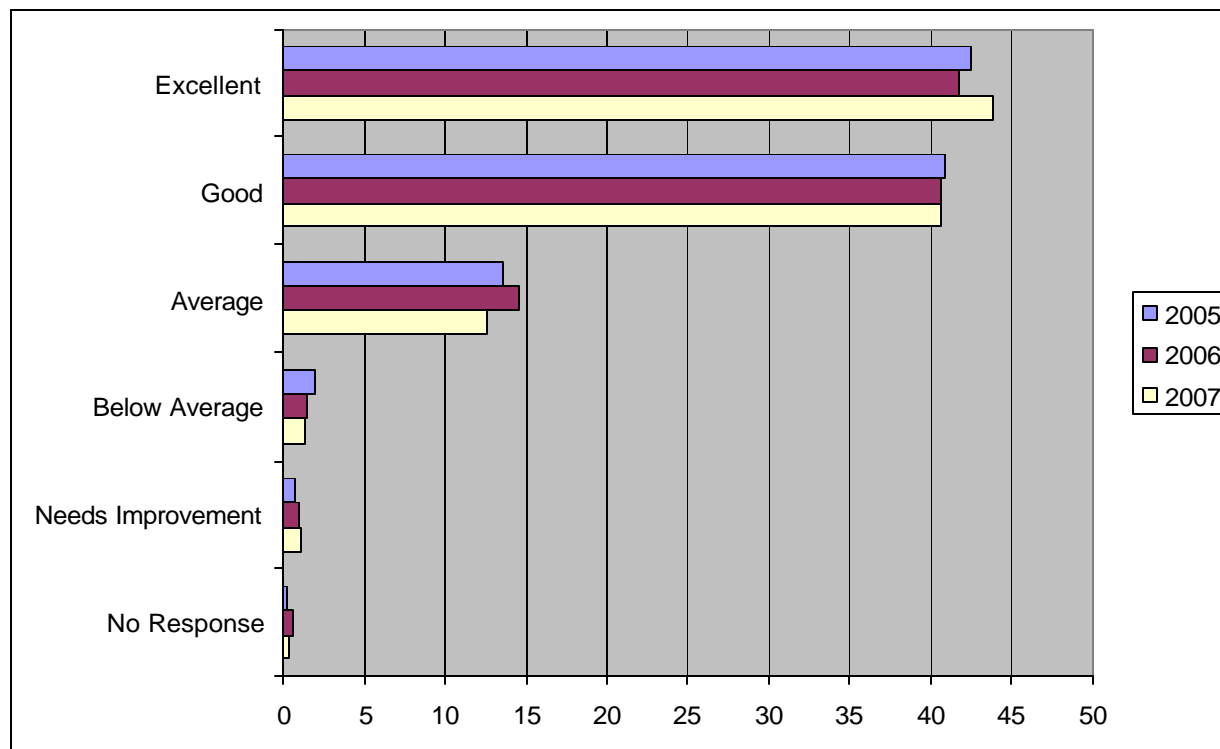


	n=957		n=1049		n=1021	
Responses	2005 Frequency	2005 Percent	2006 Frequency	2006 Percent	2007 Frequency	2007 Percent
Excellent	368	38.5	413	39.4	431	42.2
Good	426	44.5	452	43.1	434	42.5
Average	139	14.5	161	15.3	132	12.9
Below Average	14	1.5	10	1	11	1.1
Needs Improvement	8	0.8	10	1	10	1
No Response	2	0.2	3	0.3	3	0.3

Arlington Public Schools—Countywide Comparison
2005, 2006, 2007

All graphs compare percentages.
Data provided by LifeTrack Services, Inc.

12. Teachers' knowledge of the curriculum being taught.

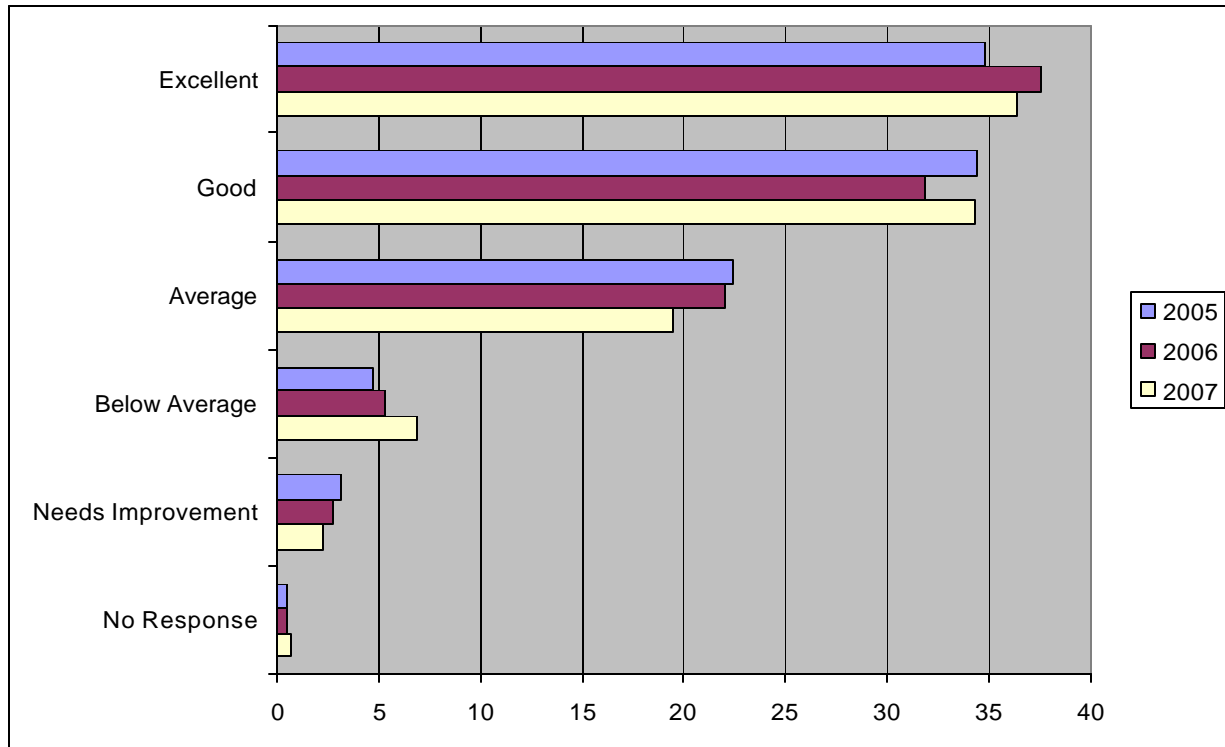


	n=957		n=1049		n=1021	
Responses	2005 Frequency	2005 Percent	2006 Frequency	2006 Percent	2007 Frequency	2007 Percent
Excellent	407	42.5	437	41.7	448	43.9
Good	391	40.9	427	40.7	415	40.6
Average	130	13.6	152	14.5	129	12.6
Below Average	19	2	16	1.5	14	1.4
Needs Improvement	7	0.7	11	1	11	1.1
No Response	3	0.3	6	0.6	4	0.4

Arlington Public Schools—Countywide Comparison
2005, 2006, 2007

All graphs compare percentages.
Data provided by LifeTrack Services, Inc.

13. The quality of help received when you had a problem at school.

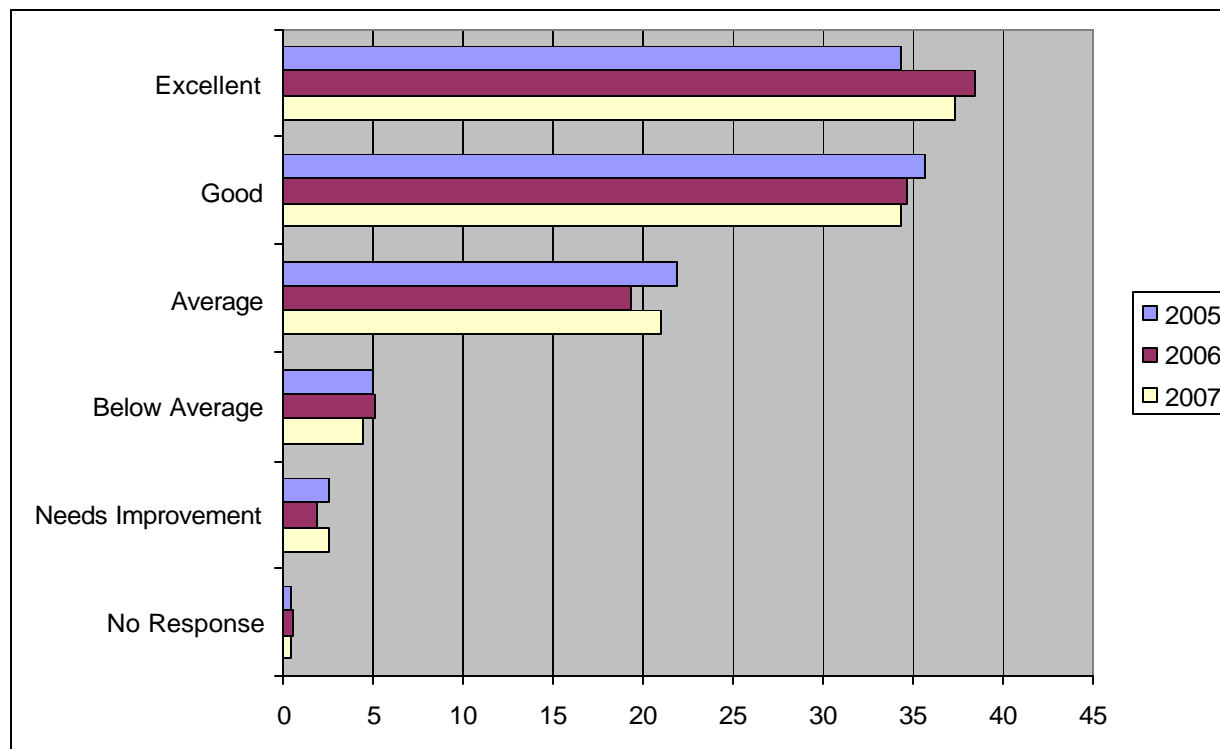


	n=957		n=1049		n=1021	
Responses	2005 Frequency	2005 Percent	2006 Frequency	2006 Percent	2007 Frequency	2007 Percent
Excellent	333	34.8	393	37.5	372	36.4
Good	329	34.4	335	31.9	350	34.3
Average	215	22.5	232	22.1	199	19.5
Below Average	45	4.7	56	5.3	70	6.9
Needs Improvement	30	3.1	28	2.7	23	2.3
No Response	5	0.5	5	0.5	7	0.7

Arlington Public Schools—Countywide Comparison
2005, 2006, 2007

All graphs compare percentages.
Data provided by LifeTrack Services, Inc.

14. Access to information and guidance about your postsecondary choices and plans.

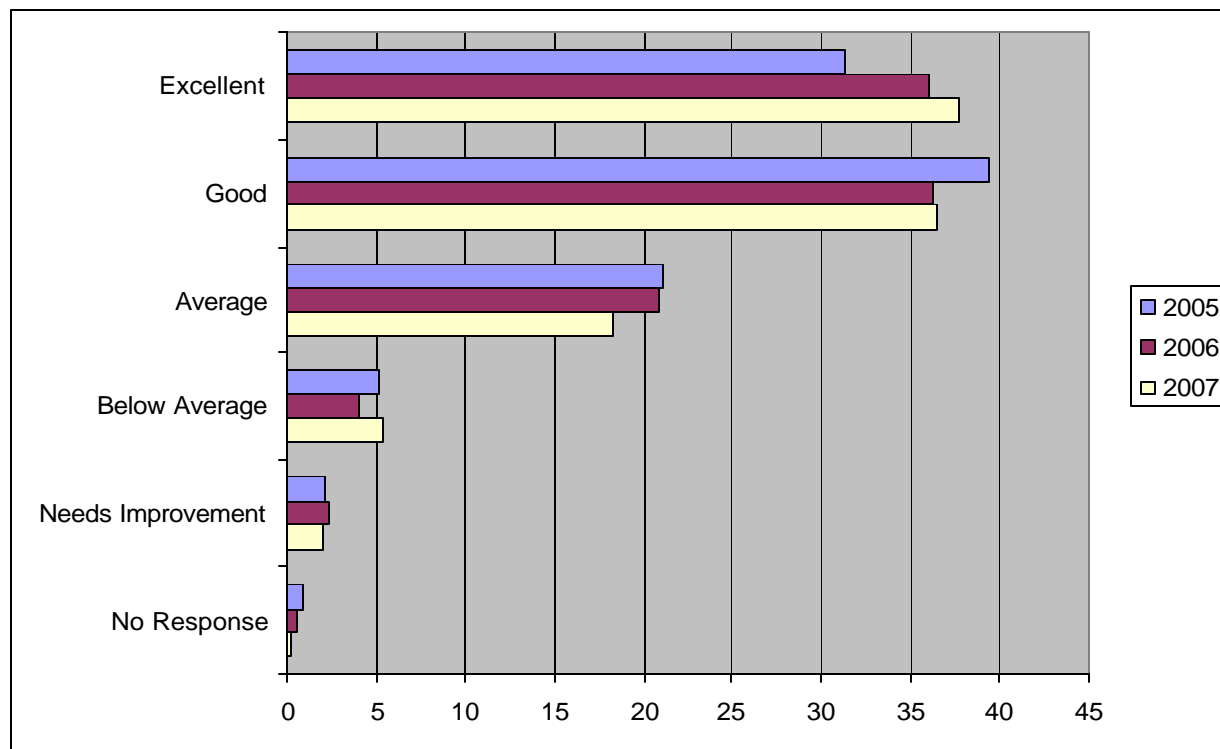


	n=957		n=1049		n=1021	
Responses	2005 Frequency	2005 Percent	2006 Frequency	2006 Percent	2007 Frequency	2007 Percent
Excellent	329	34.4	404	38.5	381	37.3
Good	342	35.7	364	34.7	351	34.4
Average	210	21.9	202	19.3	214	21.0
Below Average	48	5.0	54	5.1	45	4.4
Needs Improvement	24	2.5	20	1.9	26	2.5
No Response	4	0.4	5	0.5	4	0.4

Arlington Public Schools—Countywide Comparison
2005, 2006, 2007

All graphs compare percentages.
Data provided by LifeTrack Services, Inc.

15. Adequacy of preparation to make the transition to college or the workplace.

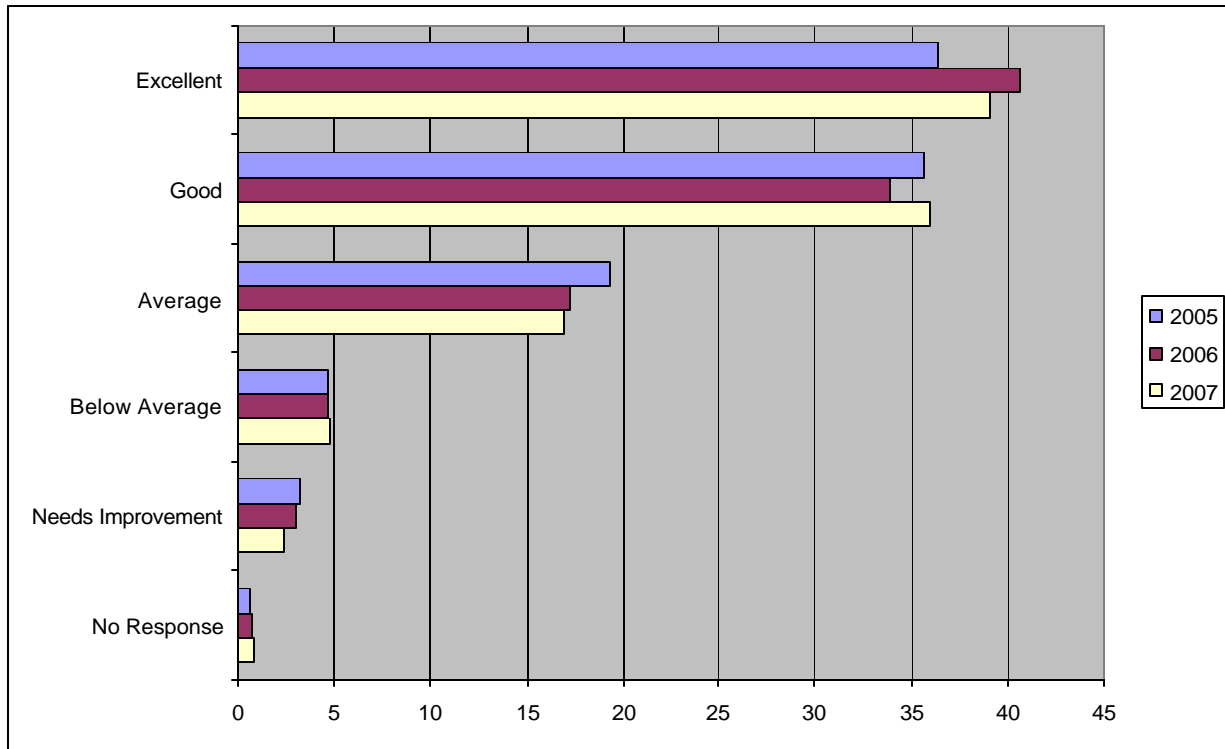


	n=957		n=1049		n=1021	
Responses	2005 Frequency	2005 Percent	2006 Frequency	2006 Percent	2007 Frequency	2007 Percent
Excellent	300	31.3	378	36.3	385	37.7
Good	377	39.4	381	36.3	373	36.5
Average	202	21.1	218	20.8	186	18.2
Below Average	49	5.1	42	4.0	55	5.4
Needs Improvement	20	2.1	24	2.3	20	2.0
No Response	9	0.9	6	0.6	2	0.2

Arlington Public Schools—Countywide Comparison
2005, 2006, 2007

All graphs compare percentages.
Data provided by LifeTrack Services, Inc.

16. The degree to which the staff knew you and cared about your success.

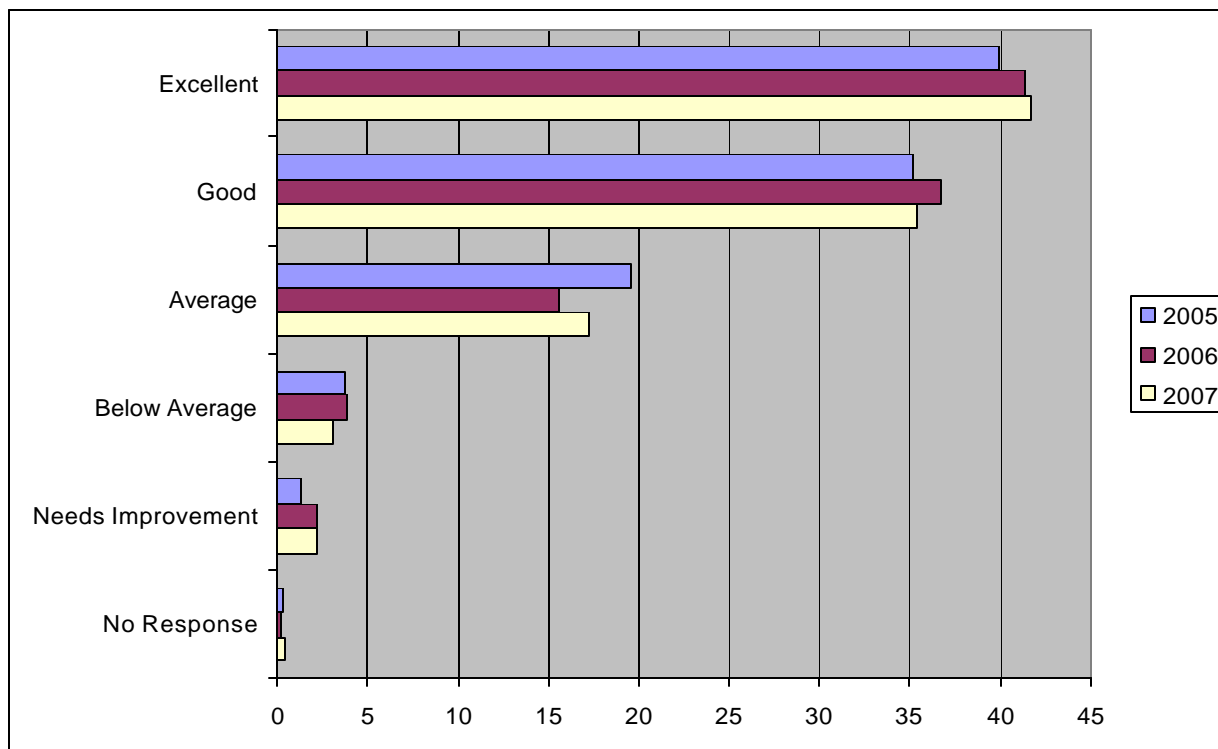


	n=957		n=1049		n=1021	
Responses	2005 Frequency	2005 Percent	2006 Frequency	2006 Percent	2007 Frequency	2007 Percent
Excellent	348	36.4	426	40.6	399	39.1
Good	342	35.7	356	33.9	368	36.0
Average	185	19.3	180	17.2	173	16.9
Below Average	45	4.7	49	4.7	49	4.8
Needs Improvement	31	3.2	31	3.0	24	2.4
No Response	6	0.6	7	0.7	8	0.8

Arlington Public Schools—Countywide Comparison
2005, 2006, 2007

All graphs compare percentages.
Data provided by LifeTrack Services, Inc.

17. Your relationship with your high school's faculty and staff.

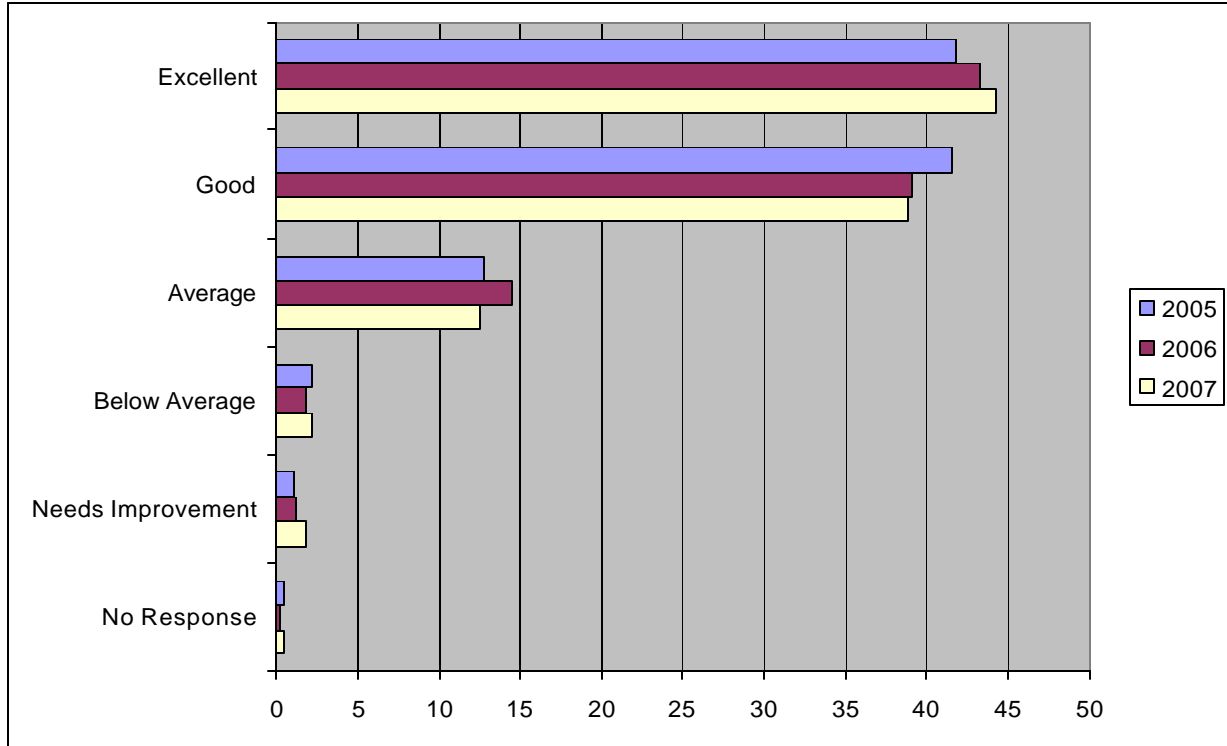


	n=957		n=1049		n=1021	
Responses	2005 Frequency	2005 Percent	2006 Frequency	2006 Percent	2007 Frequency	2007 Percent
Excellent	382	39.9	434	41.4	426	41.7
Good	337	35.2	385	36.7	361	35.4
Average	187	19.5	164	15.6	176	17.2
Below Average	36	3.8	41	3.9	32	3.1
Needs Improvement	12	1.3	23	2.2	22	2.2
No Response	3	0.3	2	0.2	4	0.4

Arlington Public Schools—Countywide Comparison
2005, 2006, 2007

All graphs compare percentages.
Data provided by LifeTrack Services, Inc.

18. Your overall educational experience at your high school.



	n=957		n=1049		n=1021	
Responses	2005 Frequency	2005 Percent	2006 Frequency	2006 Percent	2007 Frequency	2007 Percent
Excellent	400	41.8	453	43.2	452	44.3
Good	398	41.6	410	39.1	396	38.8
Average	122	12.7	152	14.5	128	12.5
Below Average	21	2.2	19	1.8	22	2.2
Needs Improvement	11	1.1	13	1.2	18	1.8
No Response	5	0.5	2	0.2	5	0.5

Arlington Public Schools—Countywide Comparison
2005, 2006, 2007

All graphs compare percentages.
Data provided by LifeTrack Services, Inc.