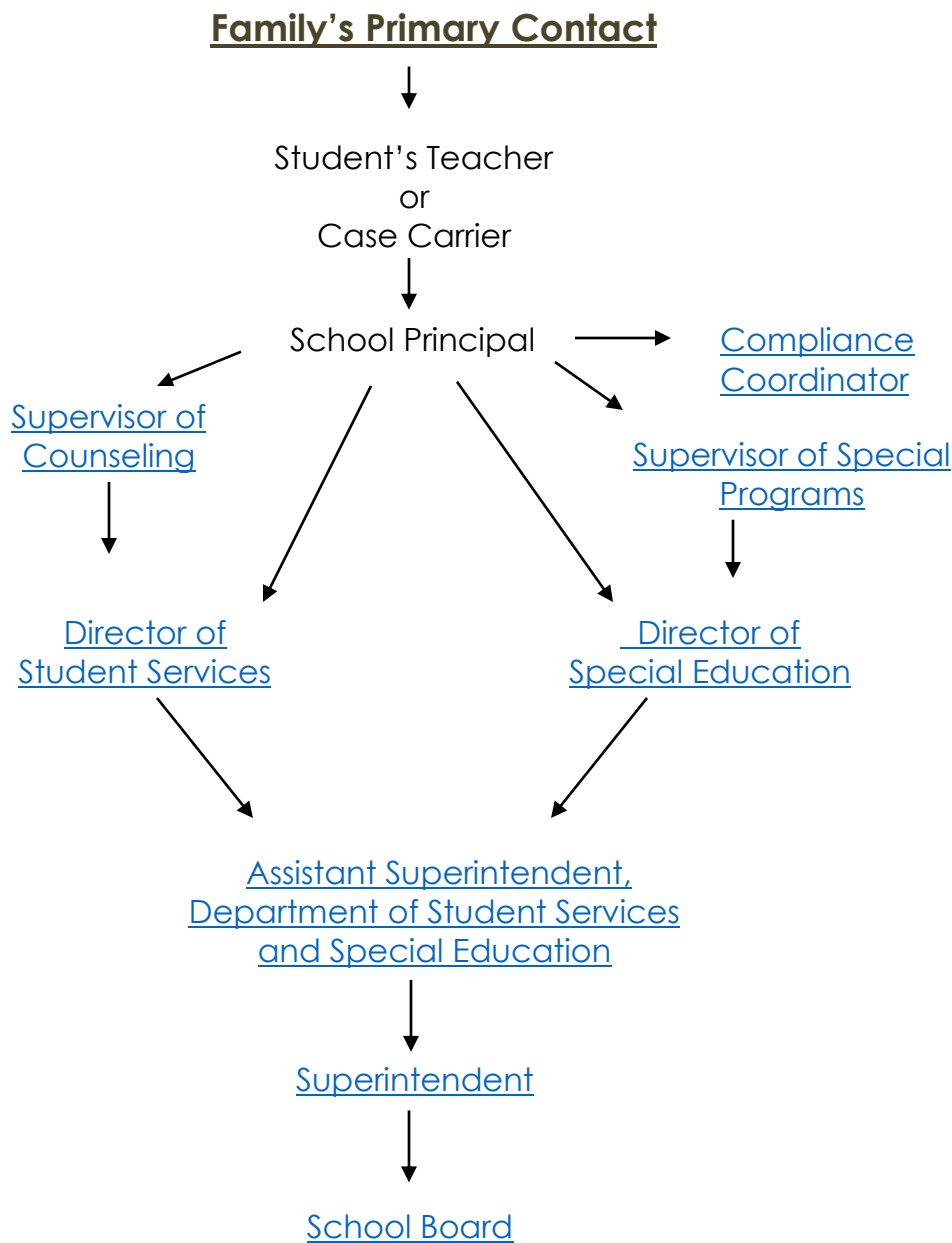




Arlington Public Schools Department of Student Services and Special Education Office of Special Education Communication Flow Chart



Potential Problem-Solving and Support Personnel:

[Parent Resource Center](#)

[School-Based Special Education Coordinator \(SEC\)](#)

[Specialists](#)
(Autism Specialist, Behavior Specialist, Instructional Specialist, others)

[Student Services Staff](#)
(counselors, psychologists, social workers)

Other APS Departments:

- [Instruction](#)
- Transportation
- Personnel

