

WILSON SCHOOL

1601 Wilson Boulevard, Arlington, VA

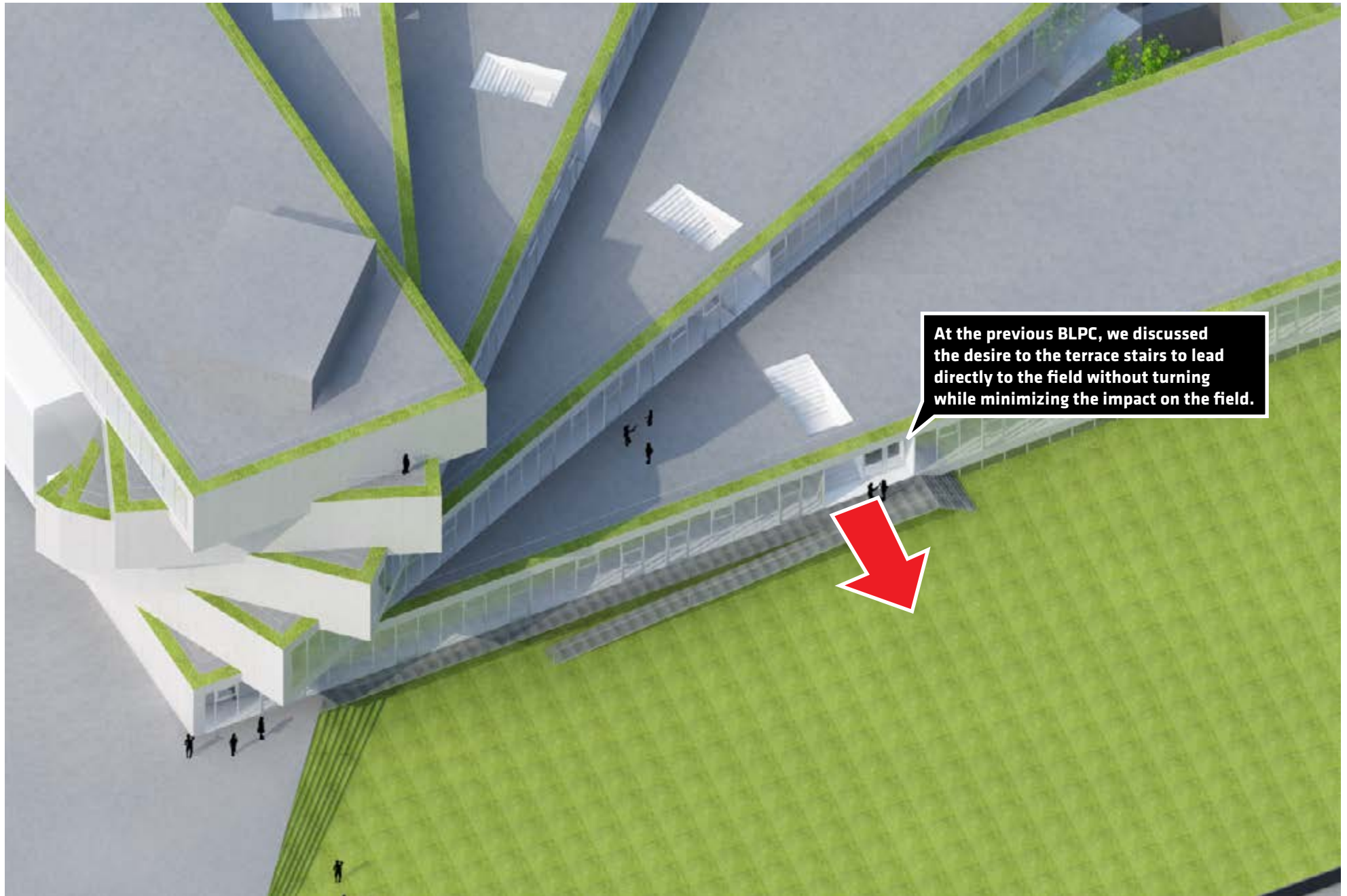
Building Level Planning Committee

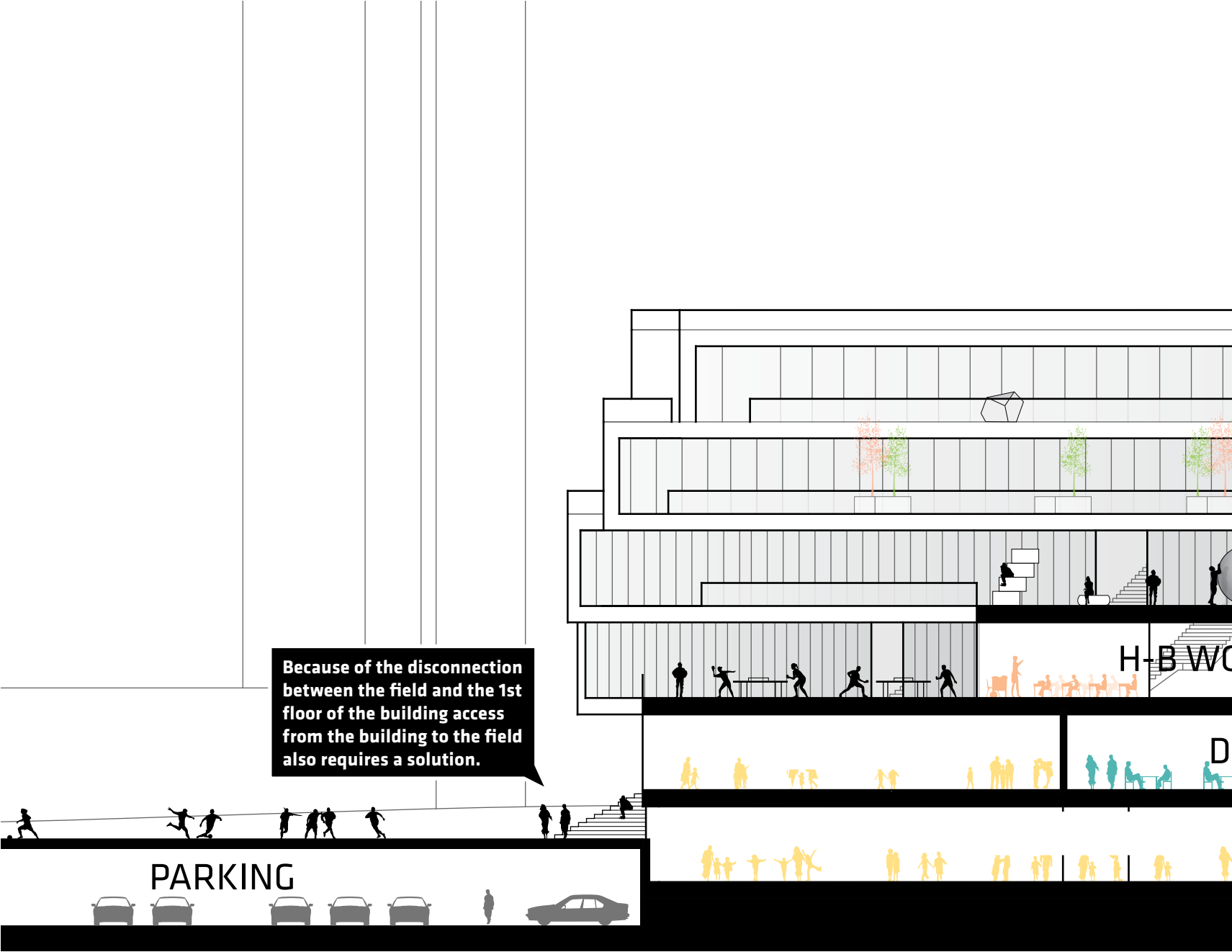
March 02, 2016

LEO A DALY |  | BIG

ENTRANCES

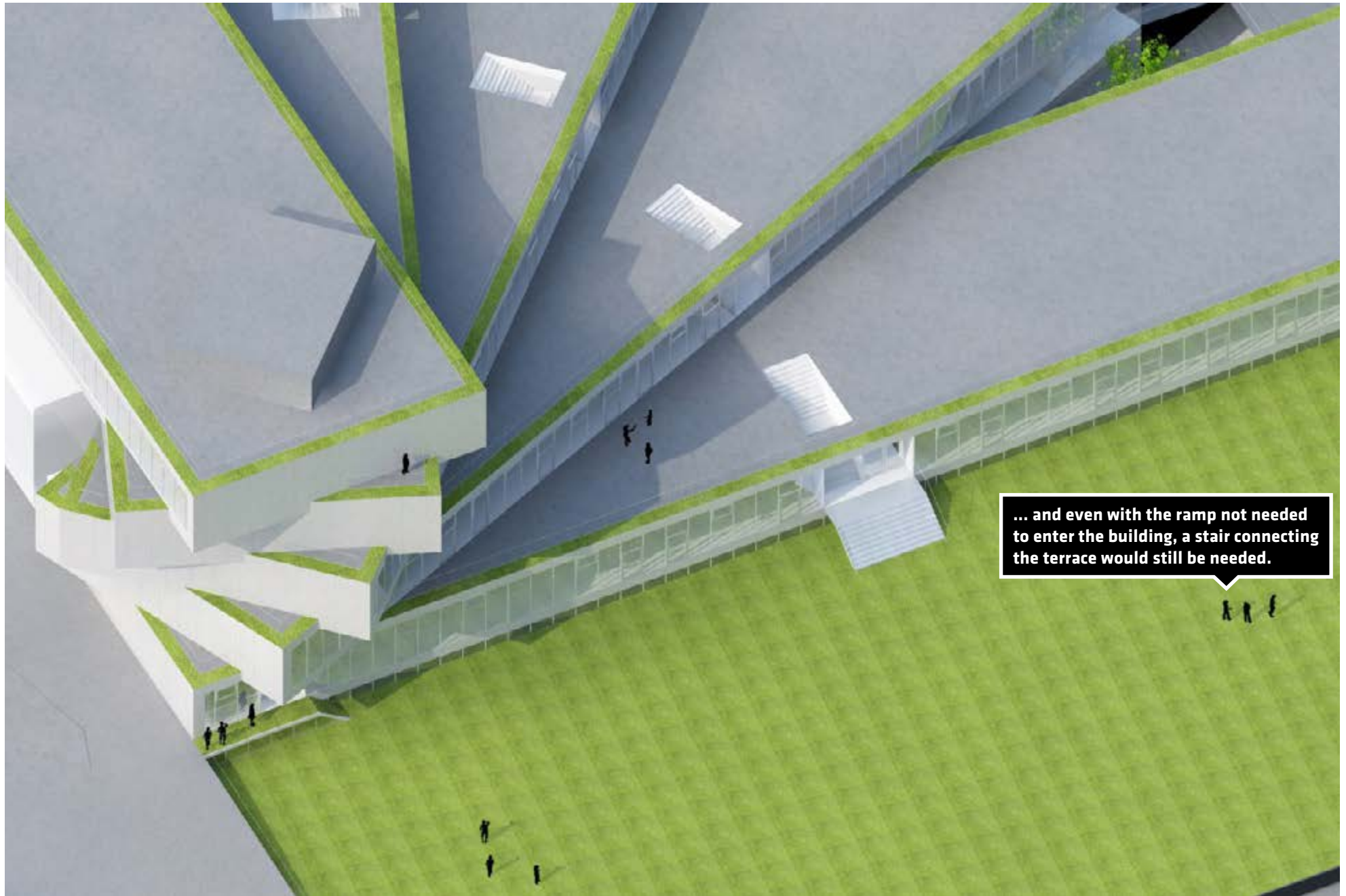
FIELD CONNECTION





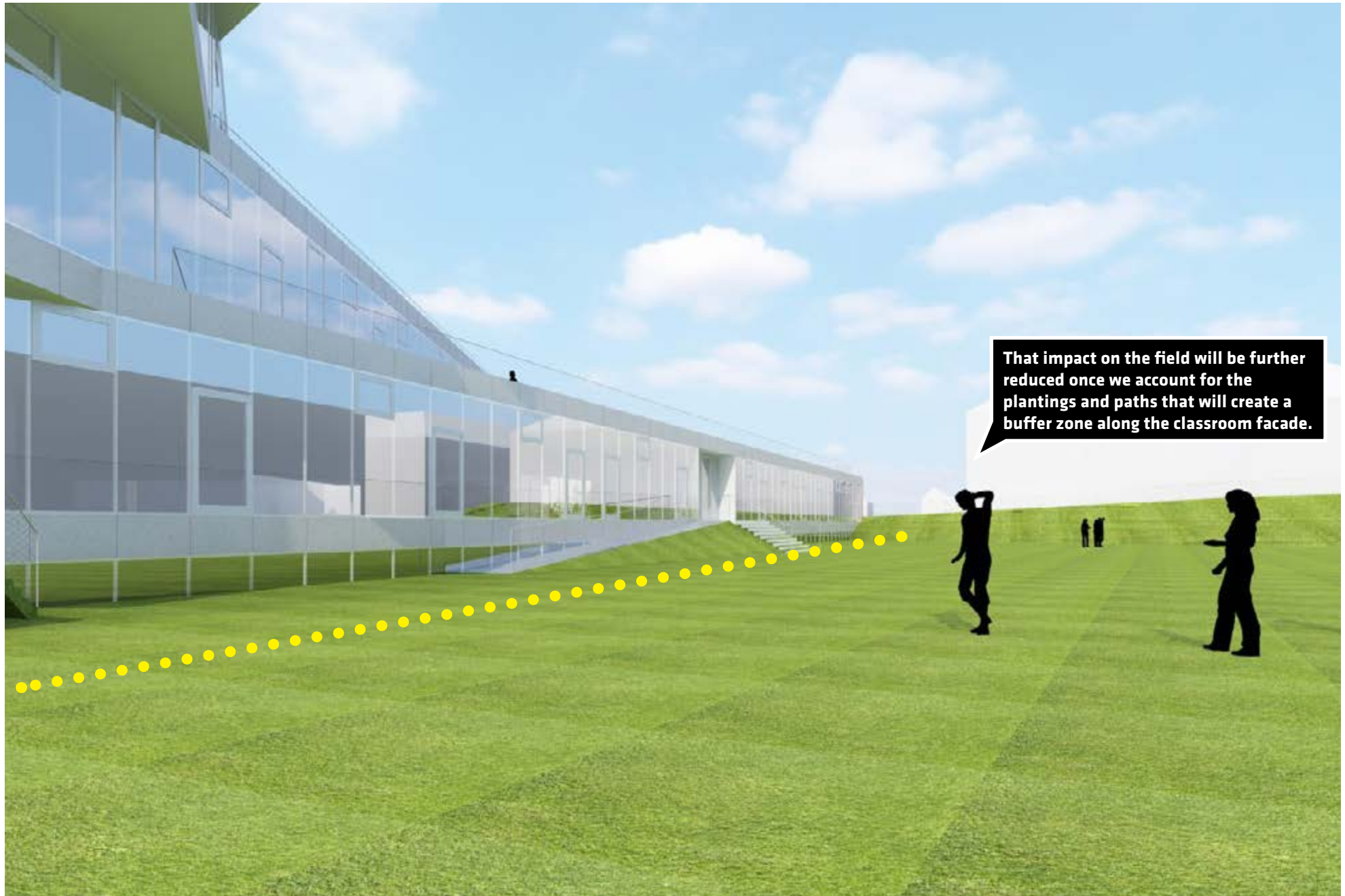






... and even with the ramp not needed to enter the building, a stair connecting the terrace would still be needed.





That impact on the field will be further reduced once we account for the plantings and paths that will create a buffer zone along the classroom facade.

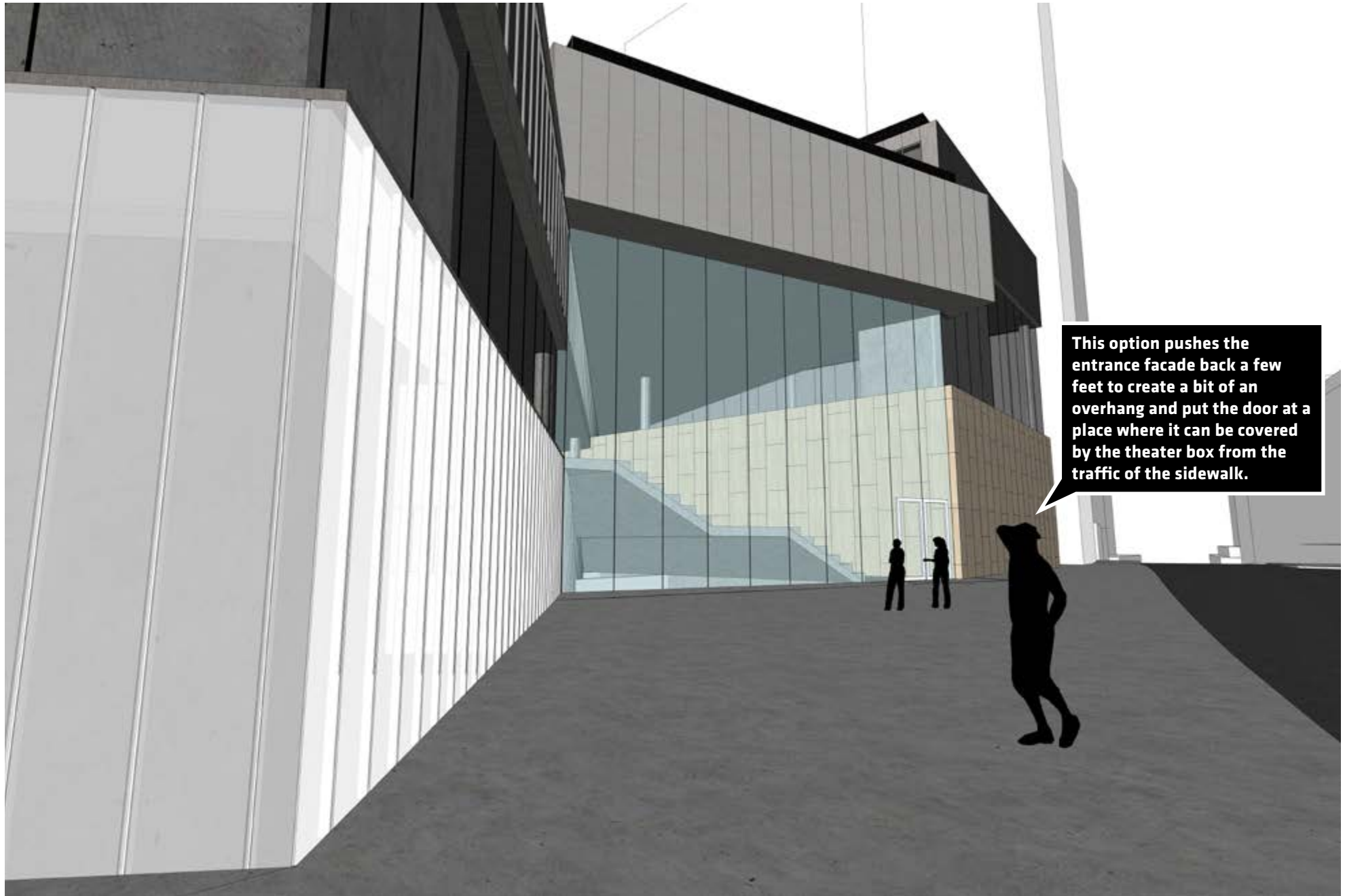
WILSON BOULEVARD

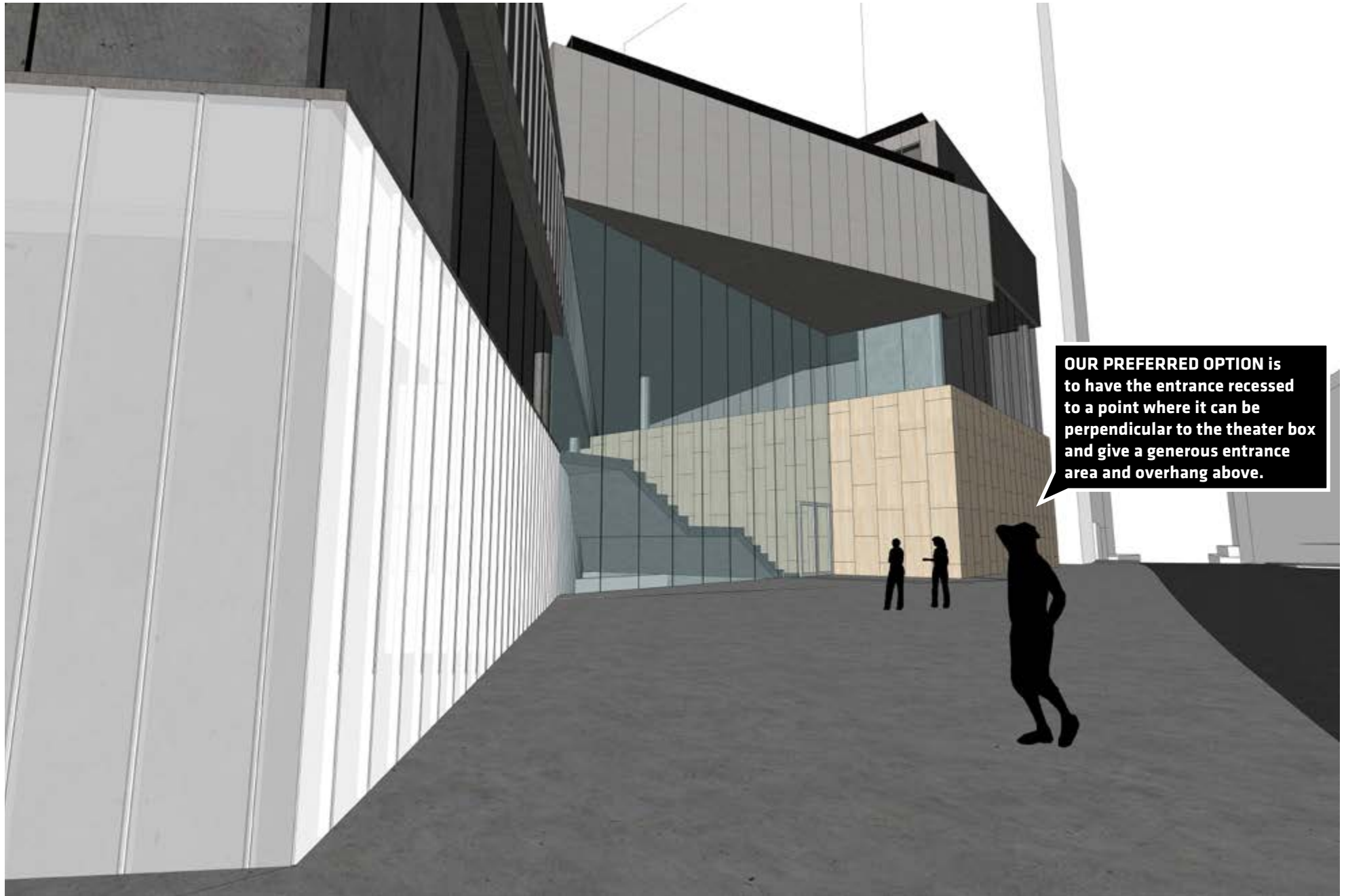


ORIGINALLY PROPOSED ENTRANCE ORIENTATION

ENTRANCES
WILSON BOULEVARD



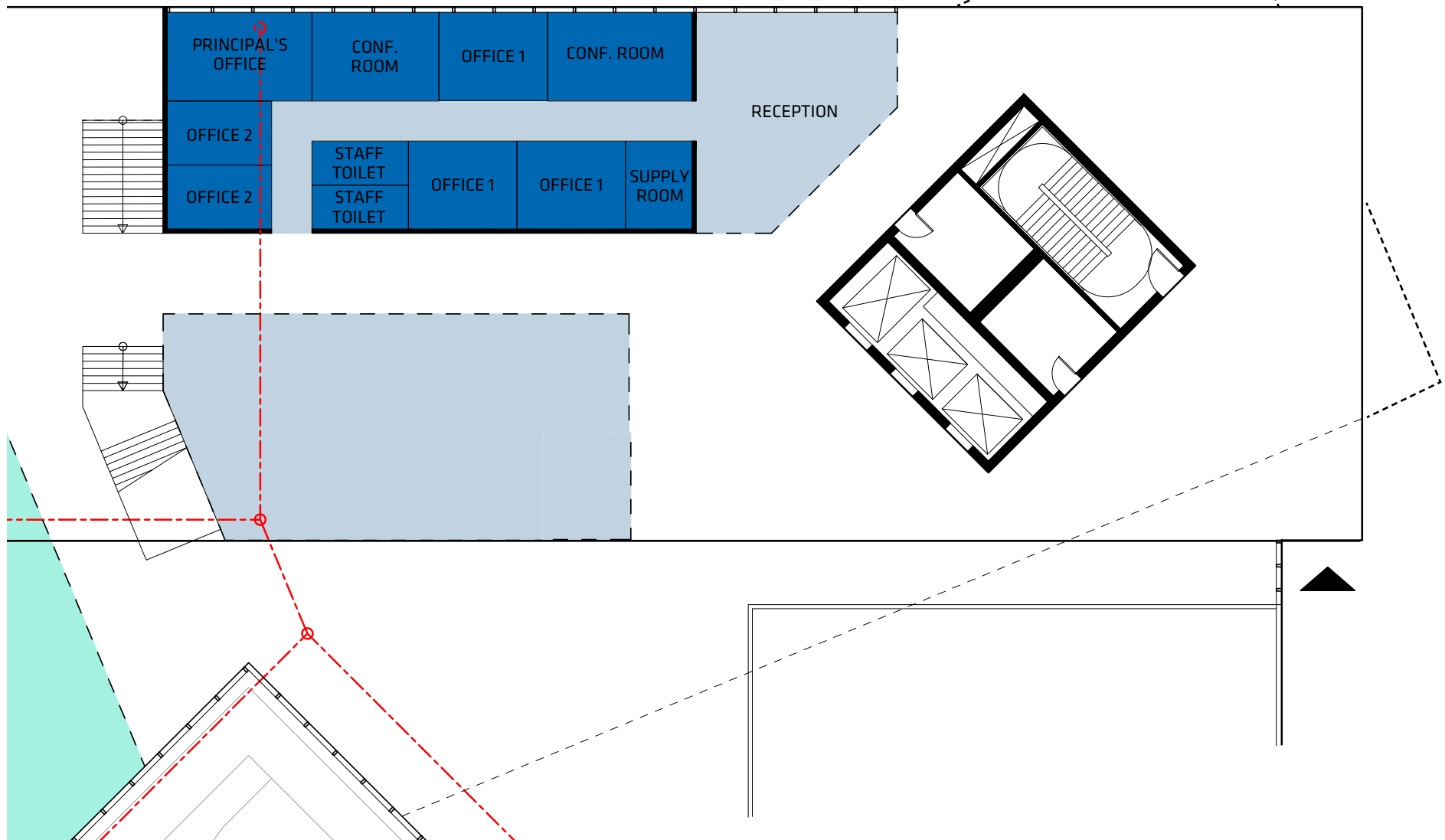


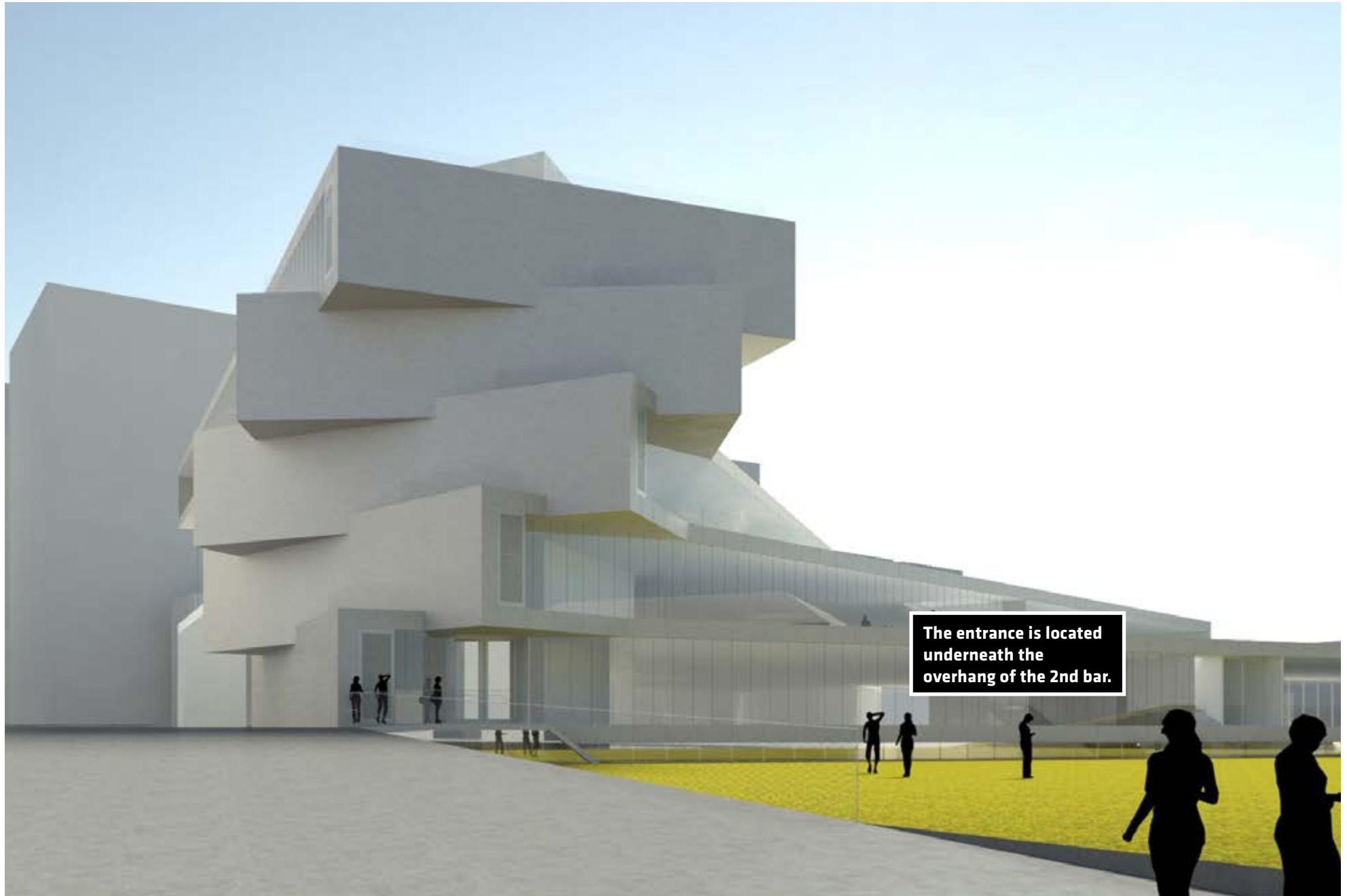


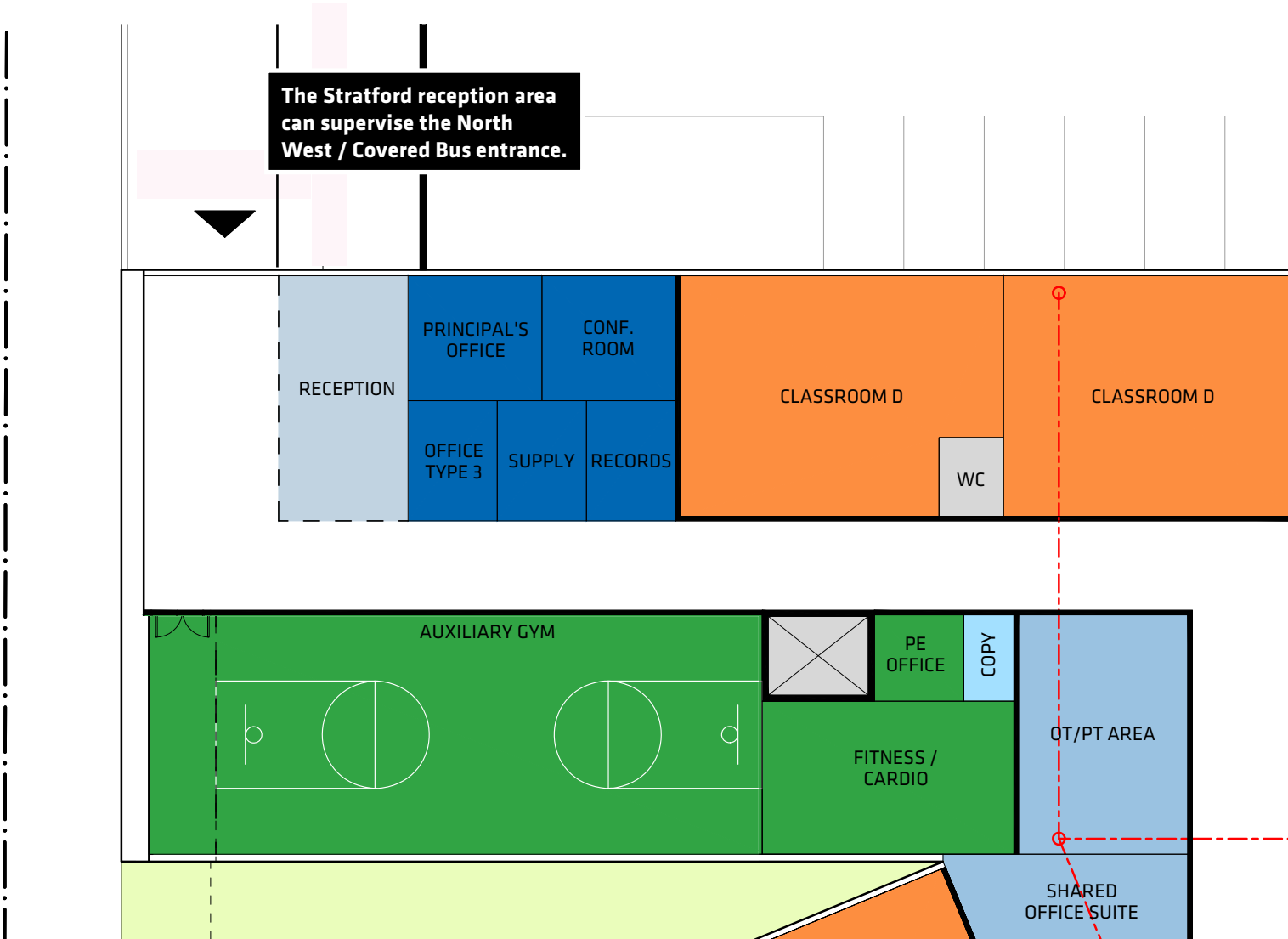
OUR PREFERRED OPTION is to have the entrance recessed to a point where it can be perpendicular to the theater box and give a generous entrance area and overhang above.

PLANNING UPDATES

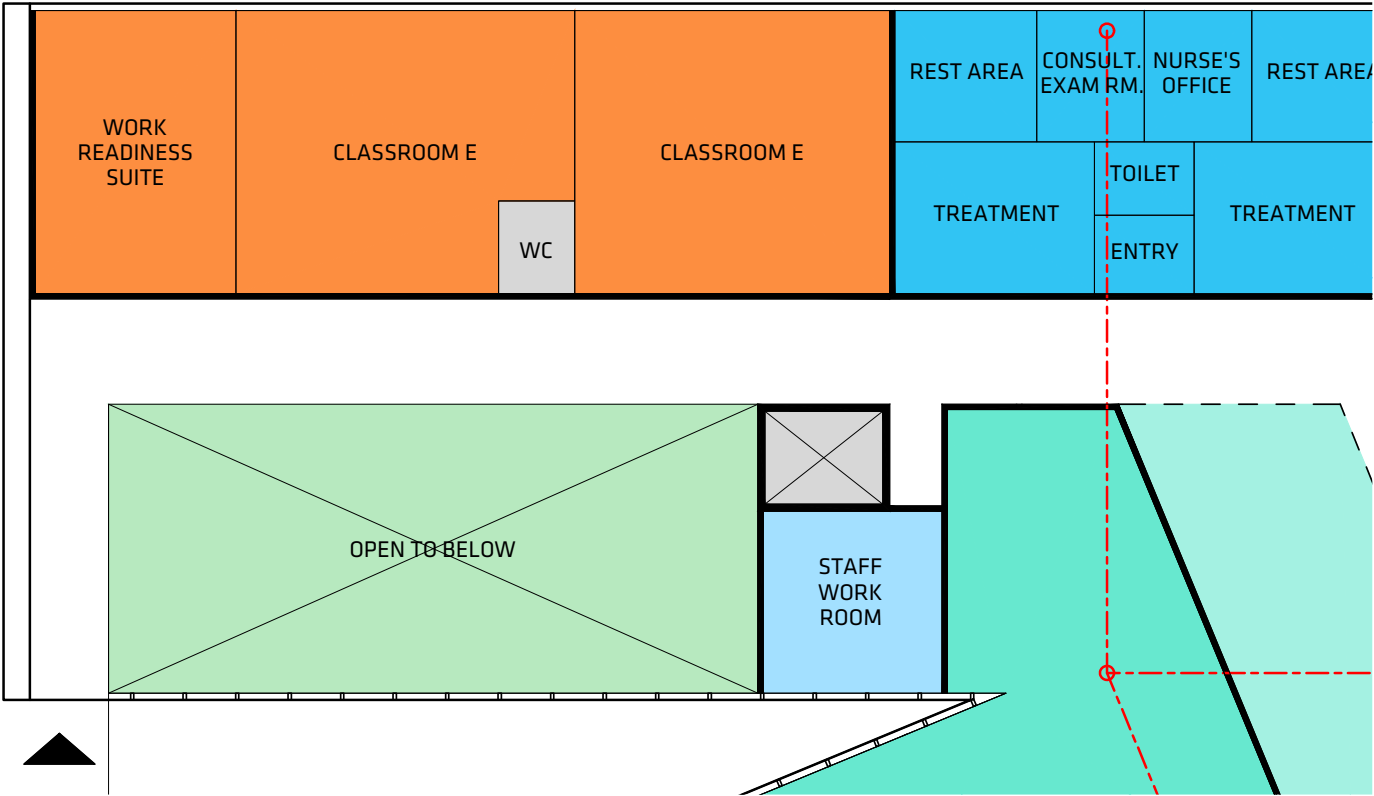
This is the configuration of the H-B Admin area and the North East / Park Entrance. It allows for the H-B Admin suite to supervise the entrance location.







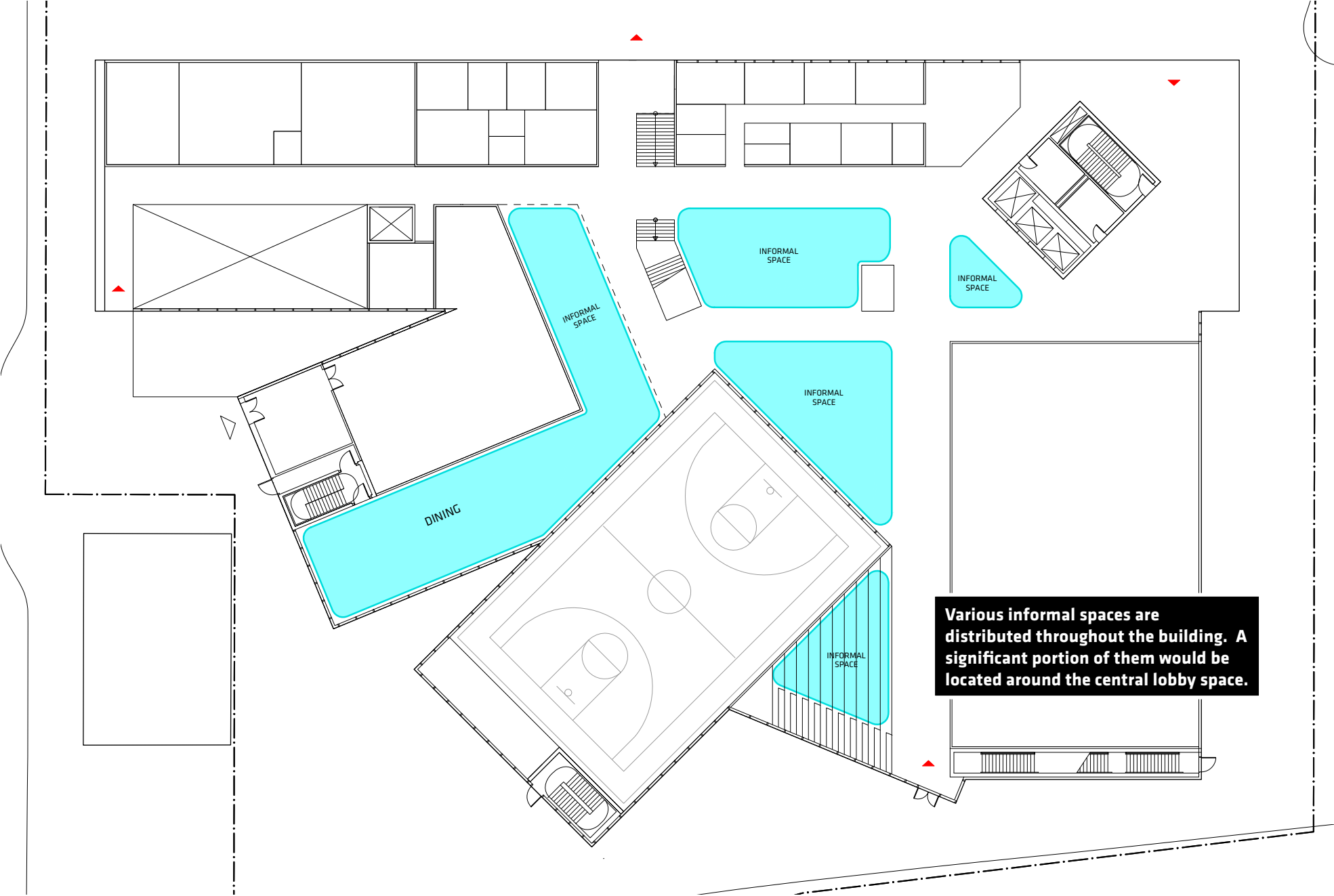


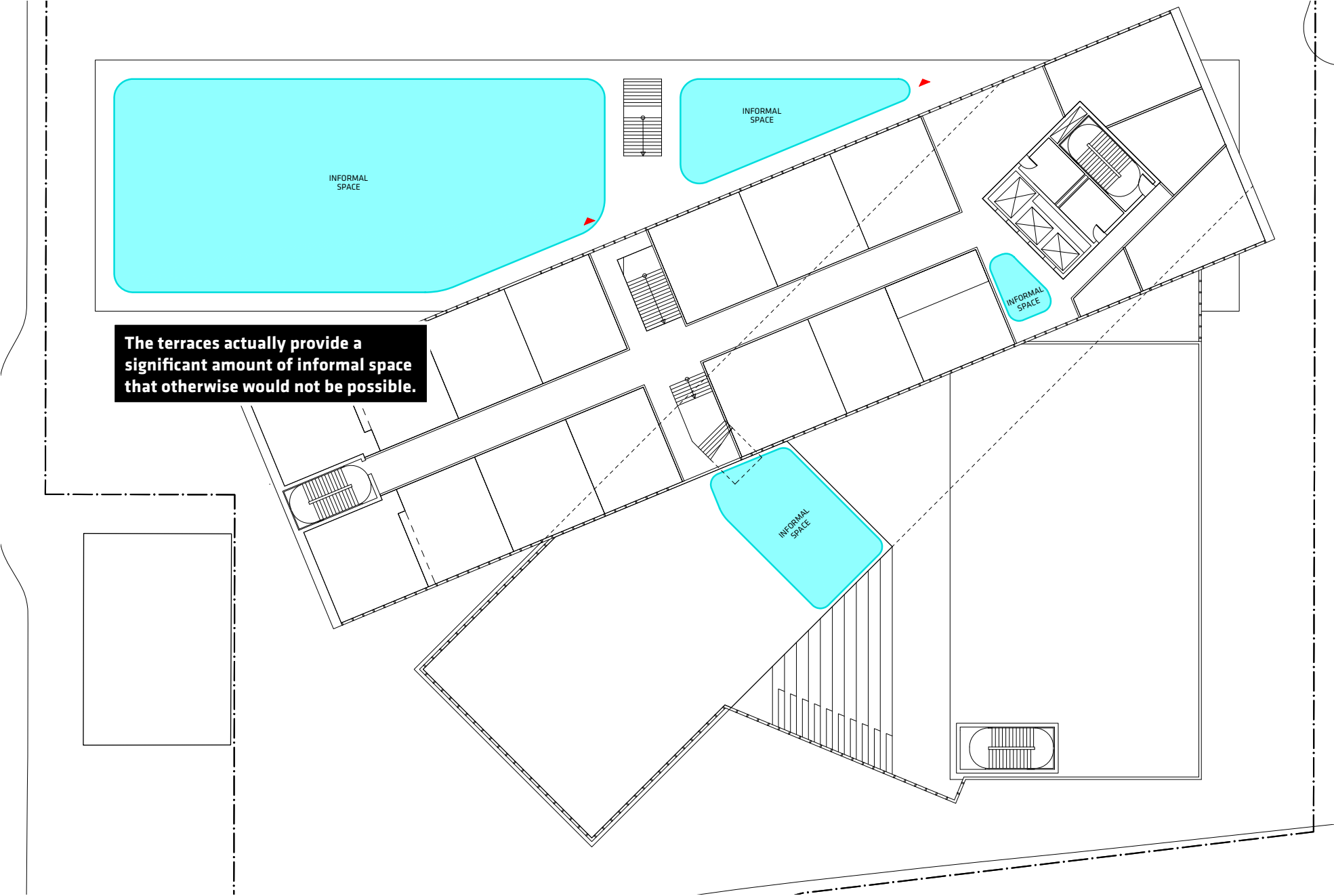


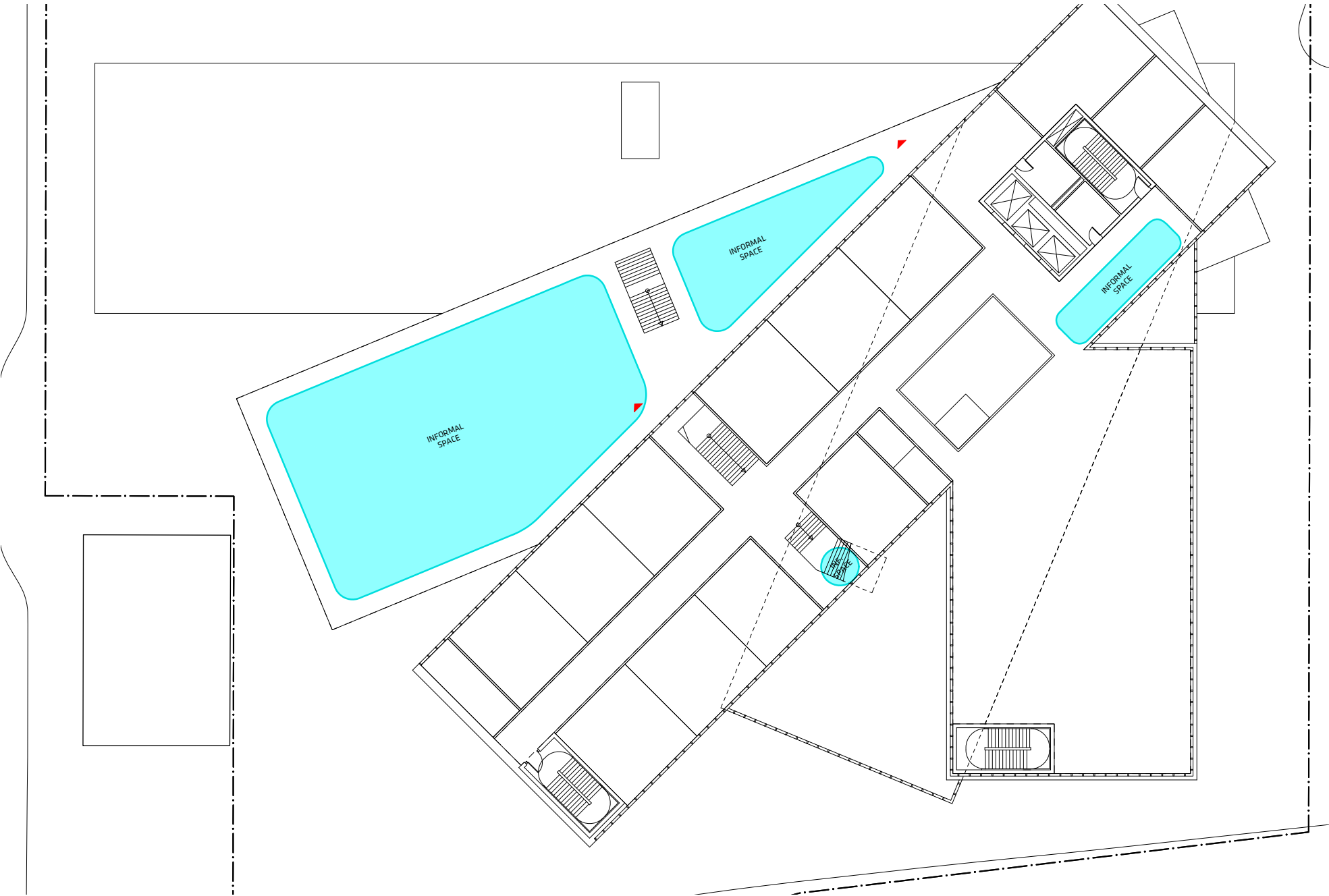
Quinn St Entrance will be a secondary entrance that relies on keycard access.



INFORMAL SPACES

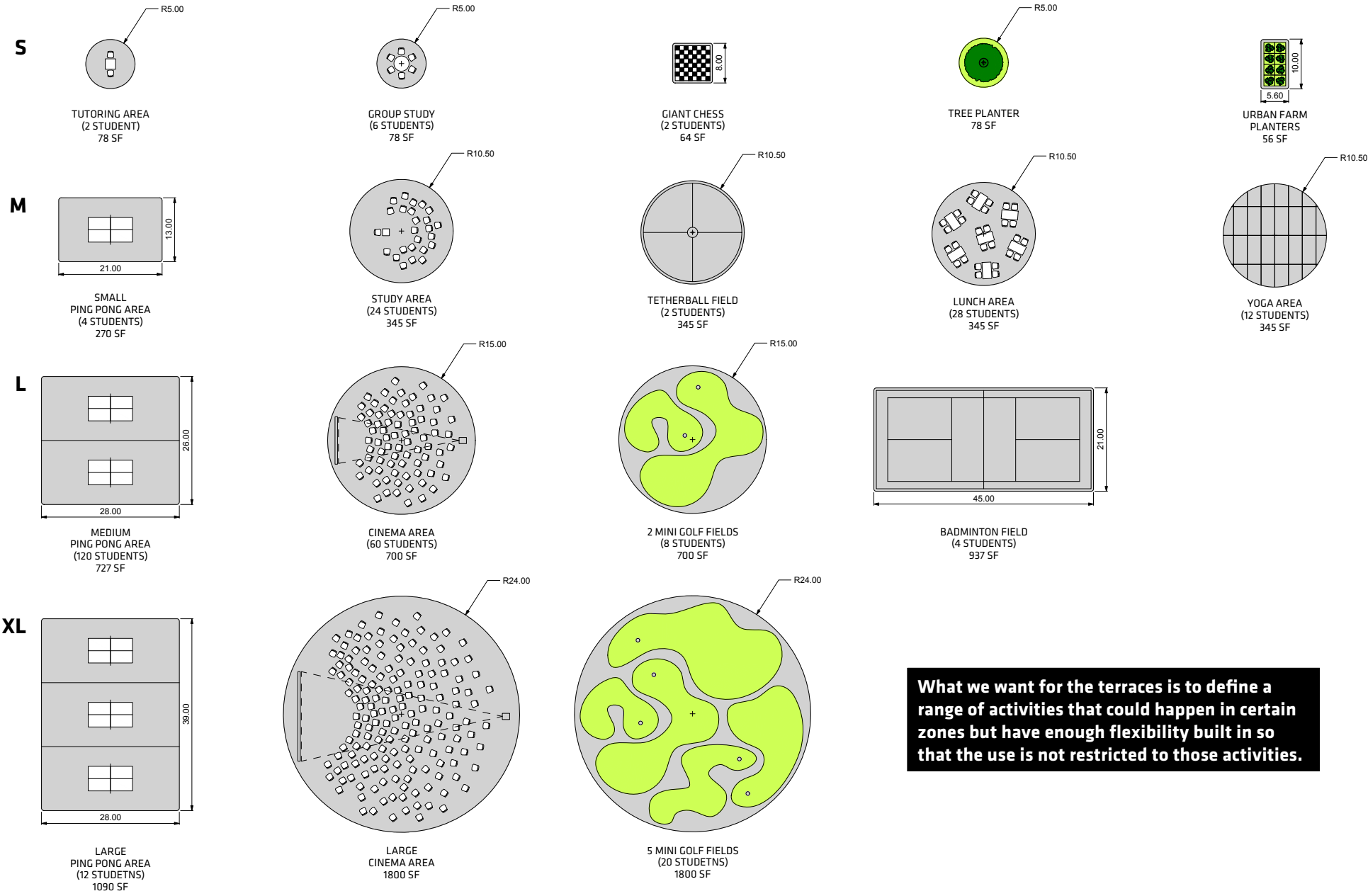








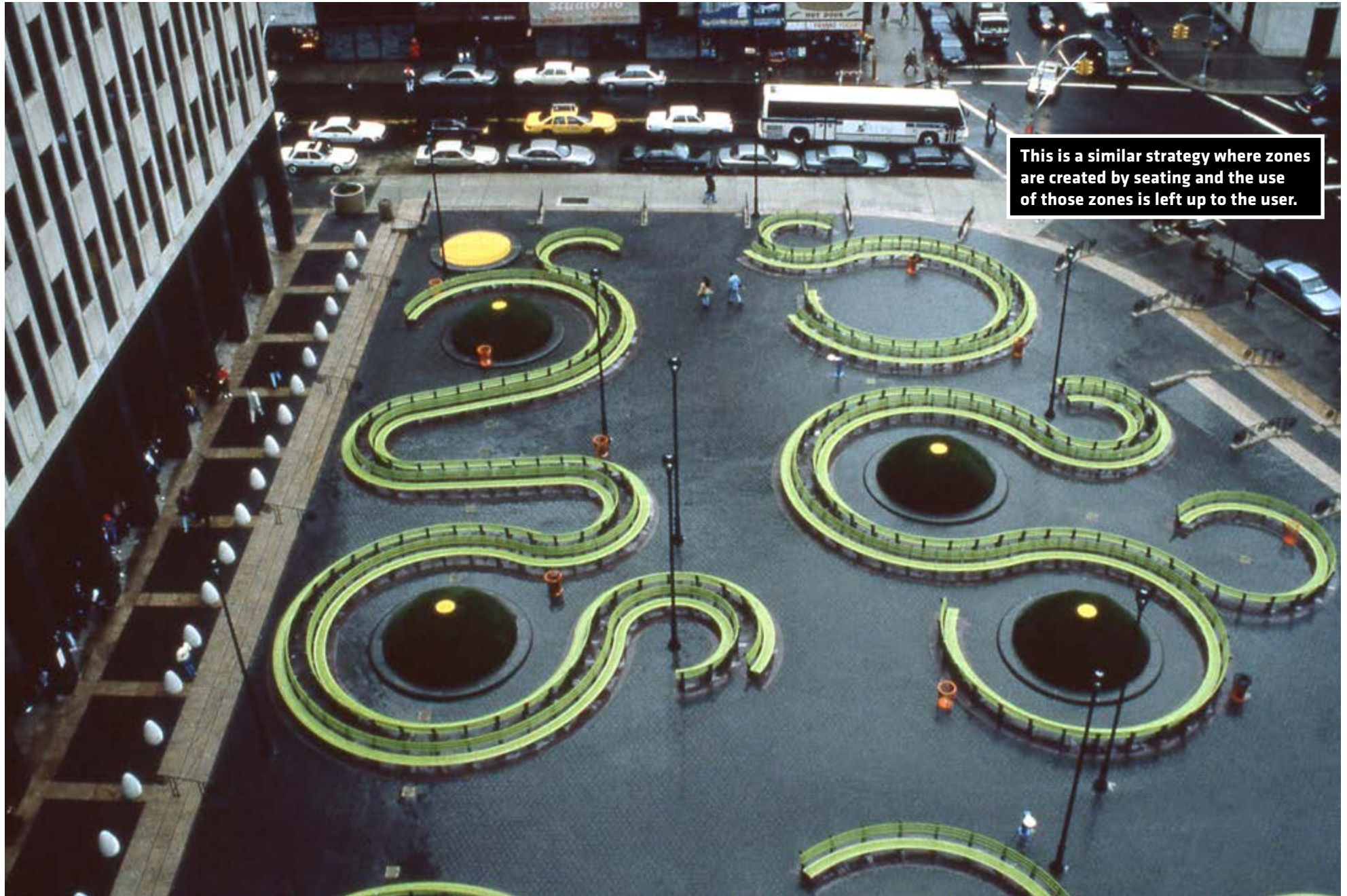
TERRACE PROGRESS

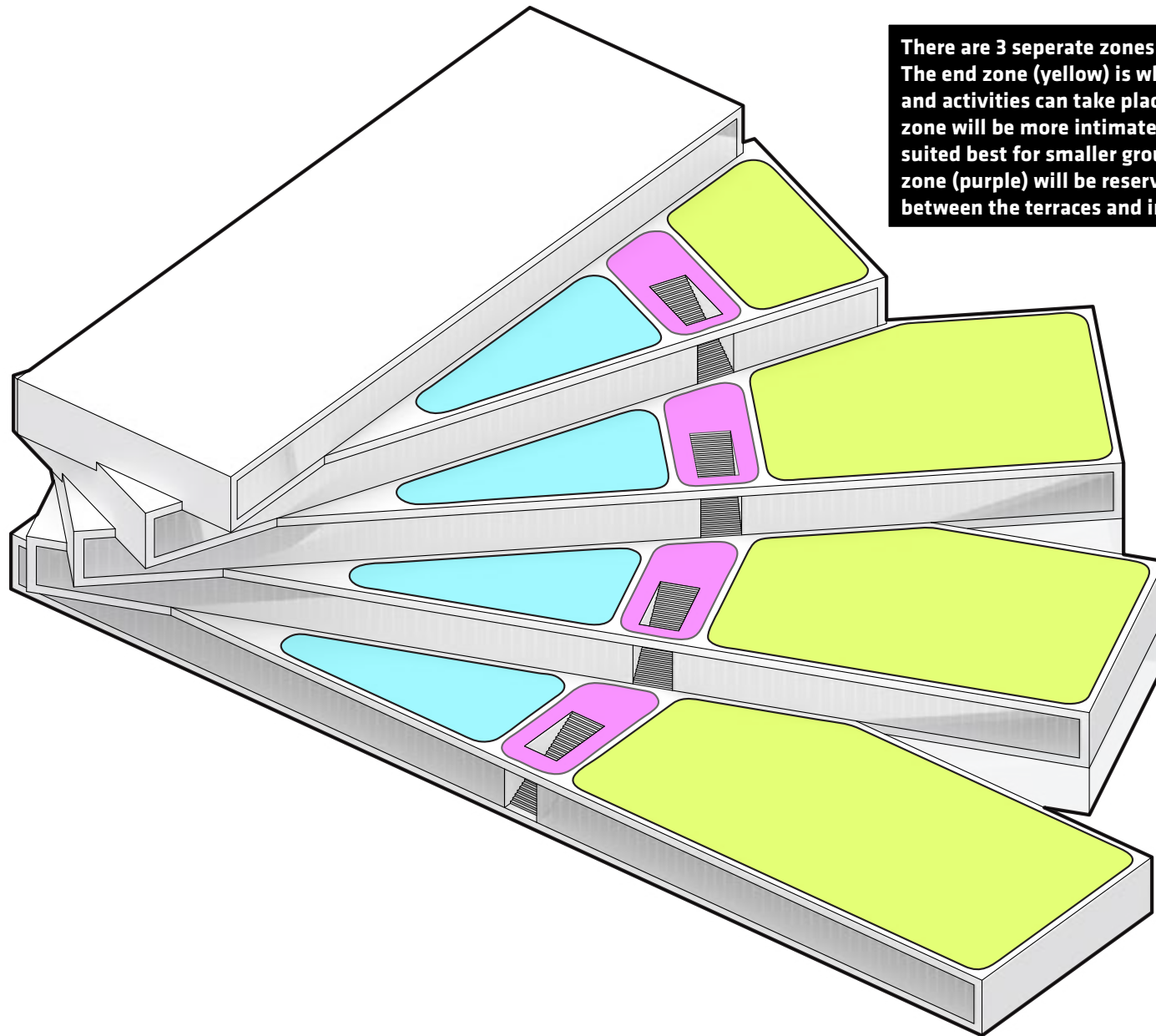


What we want for the terraces is to define a range of activities that could happen in certain zones but have enough flexibility built in so that the use is not restricted to those activities.

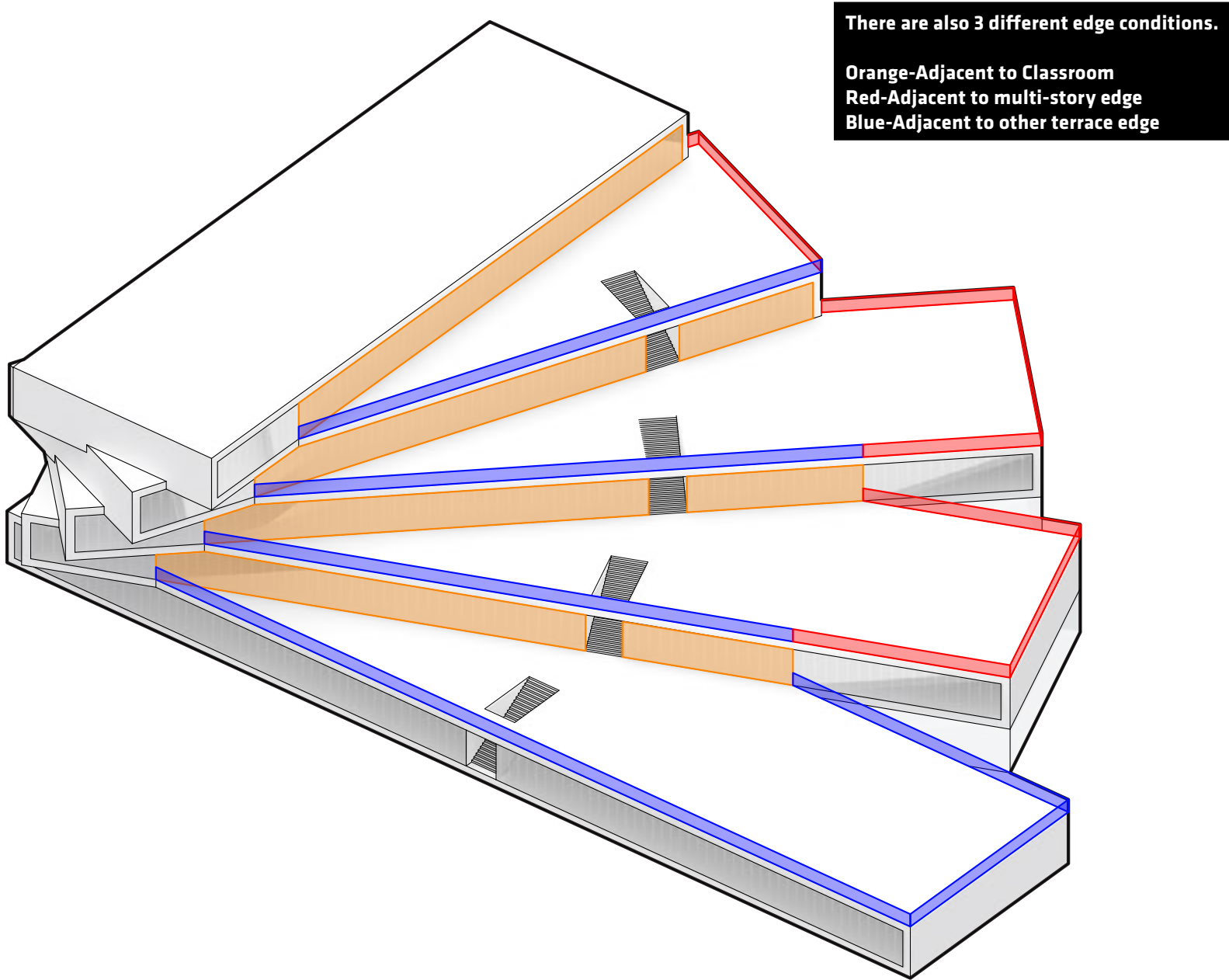


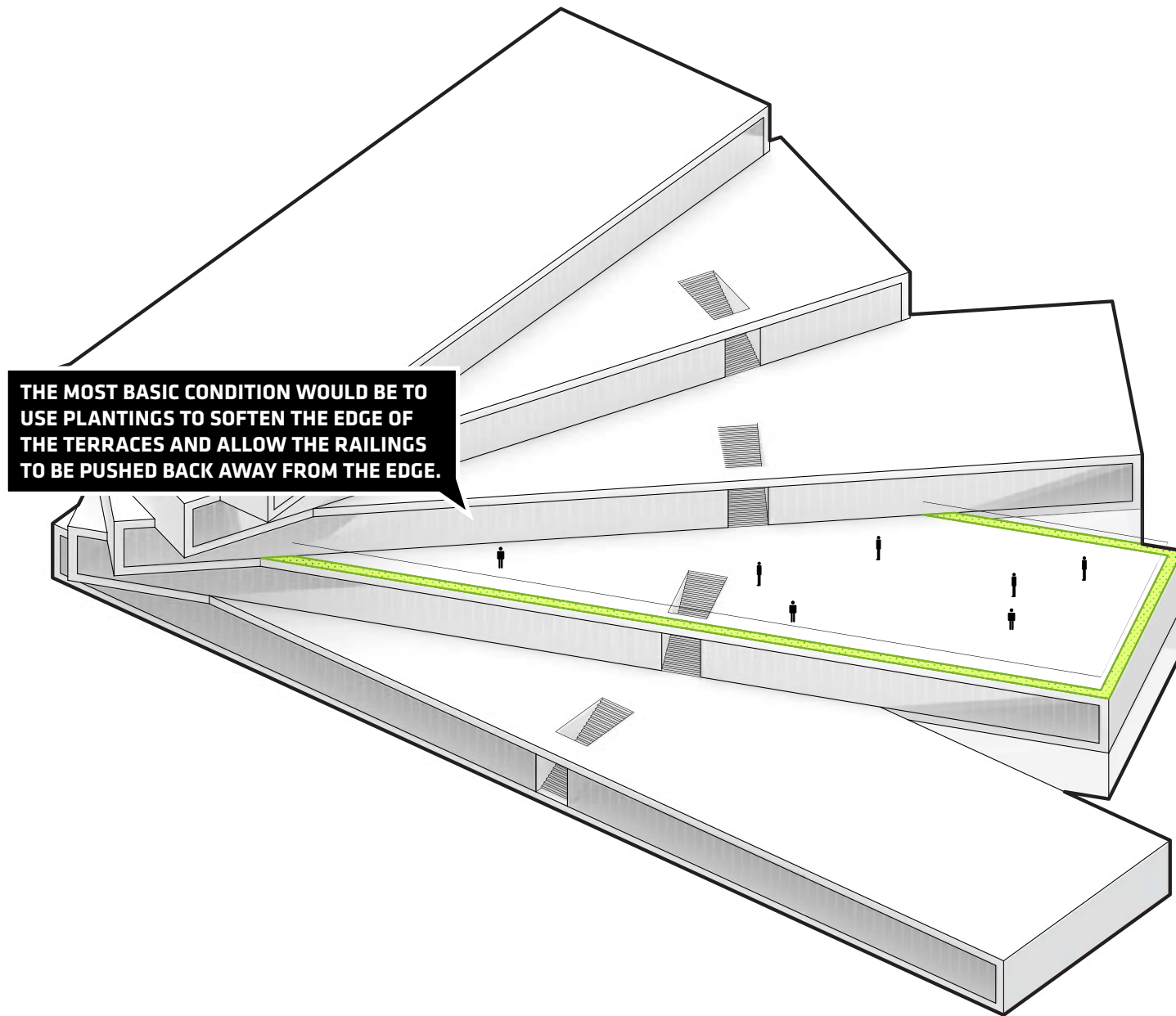
This is an example of a project in Philadelphia where uses were suggested but there was enough flexibility to allow for the users to define their own experience.

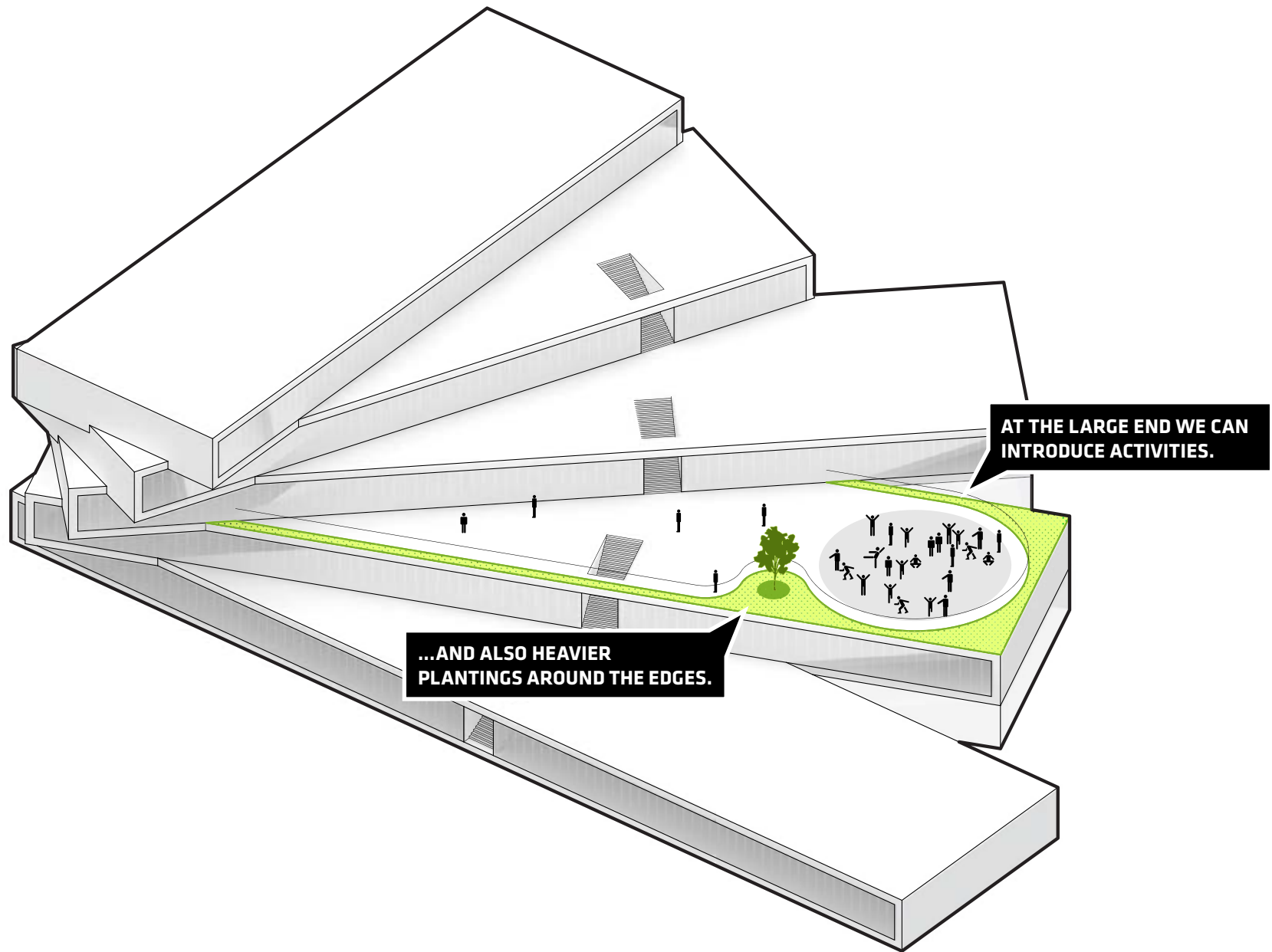


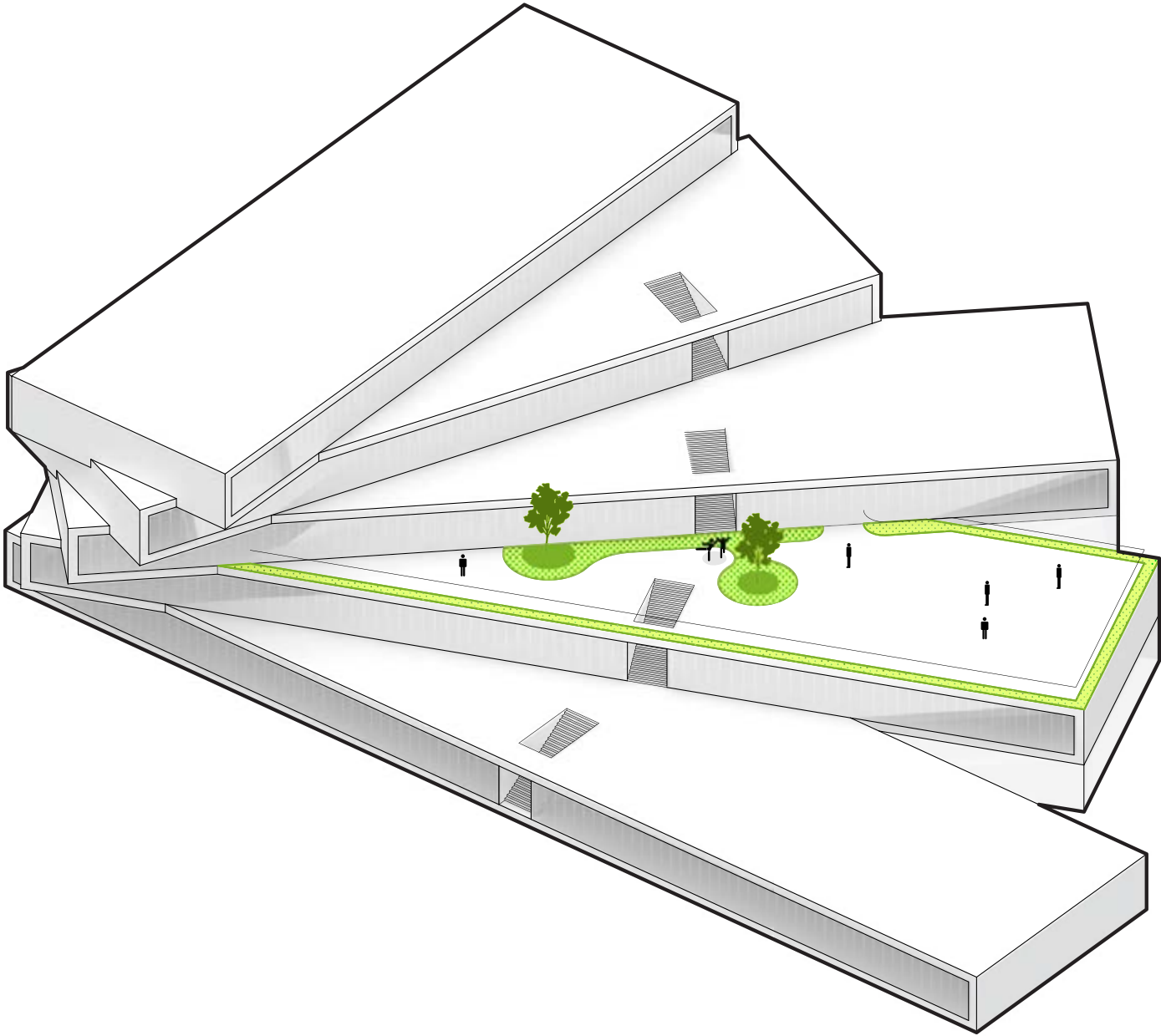


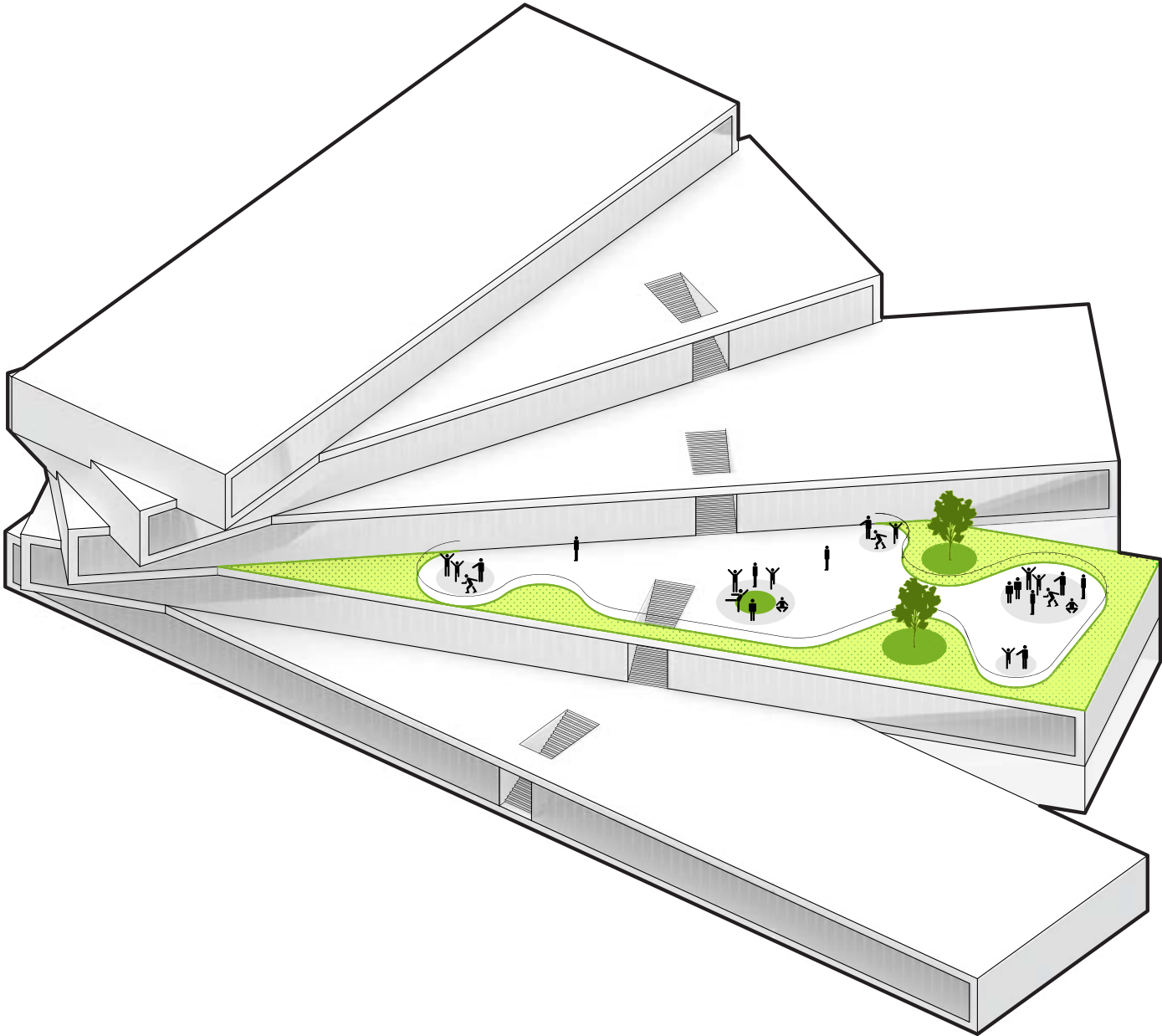
There are 3 separate zones on each terrace. The end zone (yellow) is where larger programs and activities can take place. The inside (blue) zone will be more intimate in scale and be suited best for smaller groups. The center zone (purple) will be reserved for circulation between the terraces and into the building.

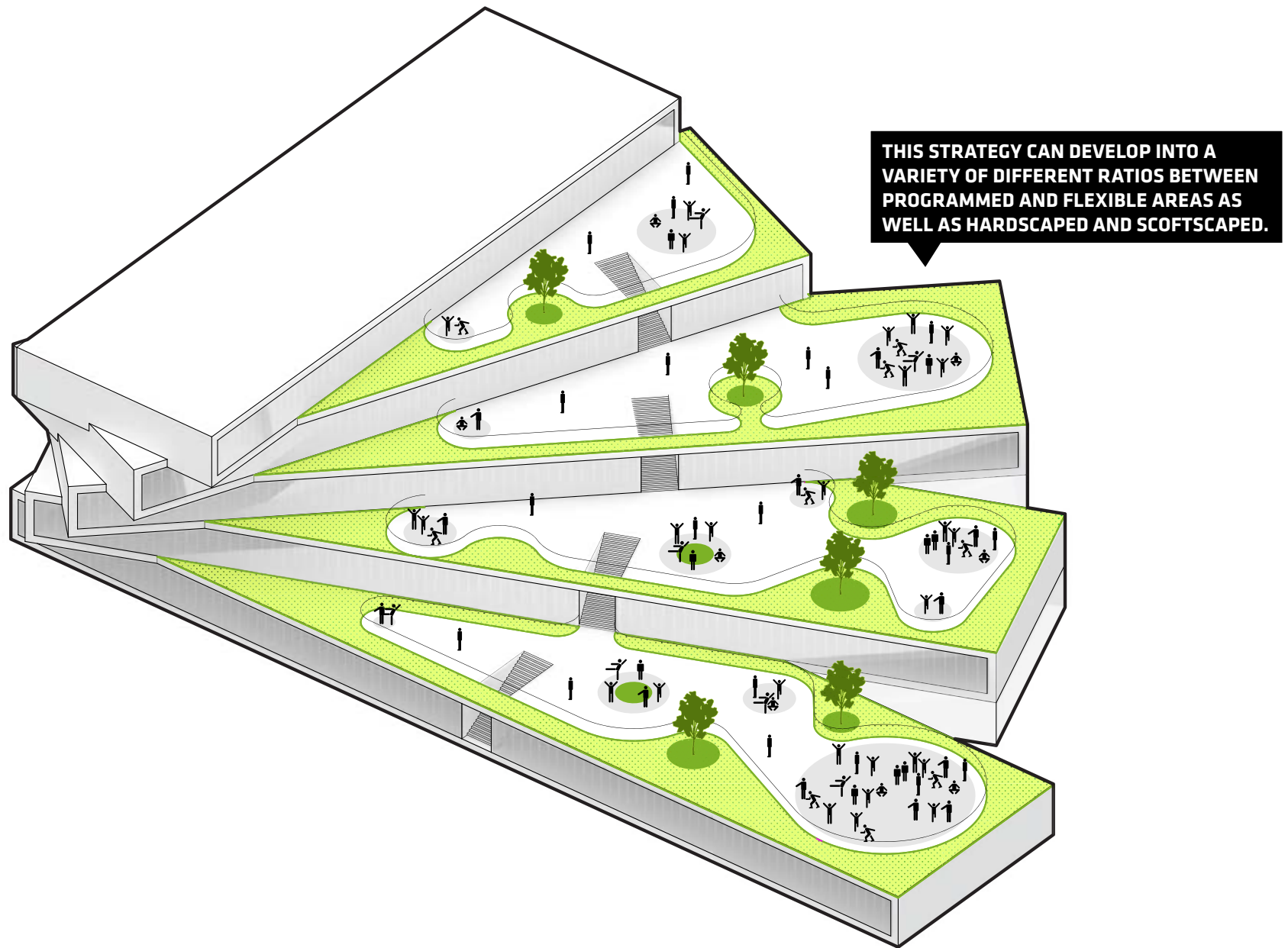




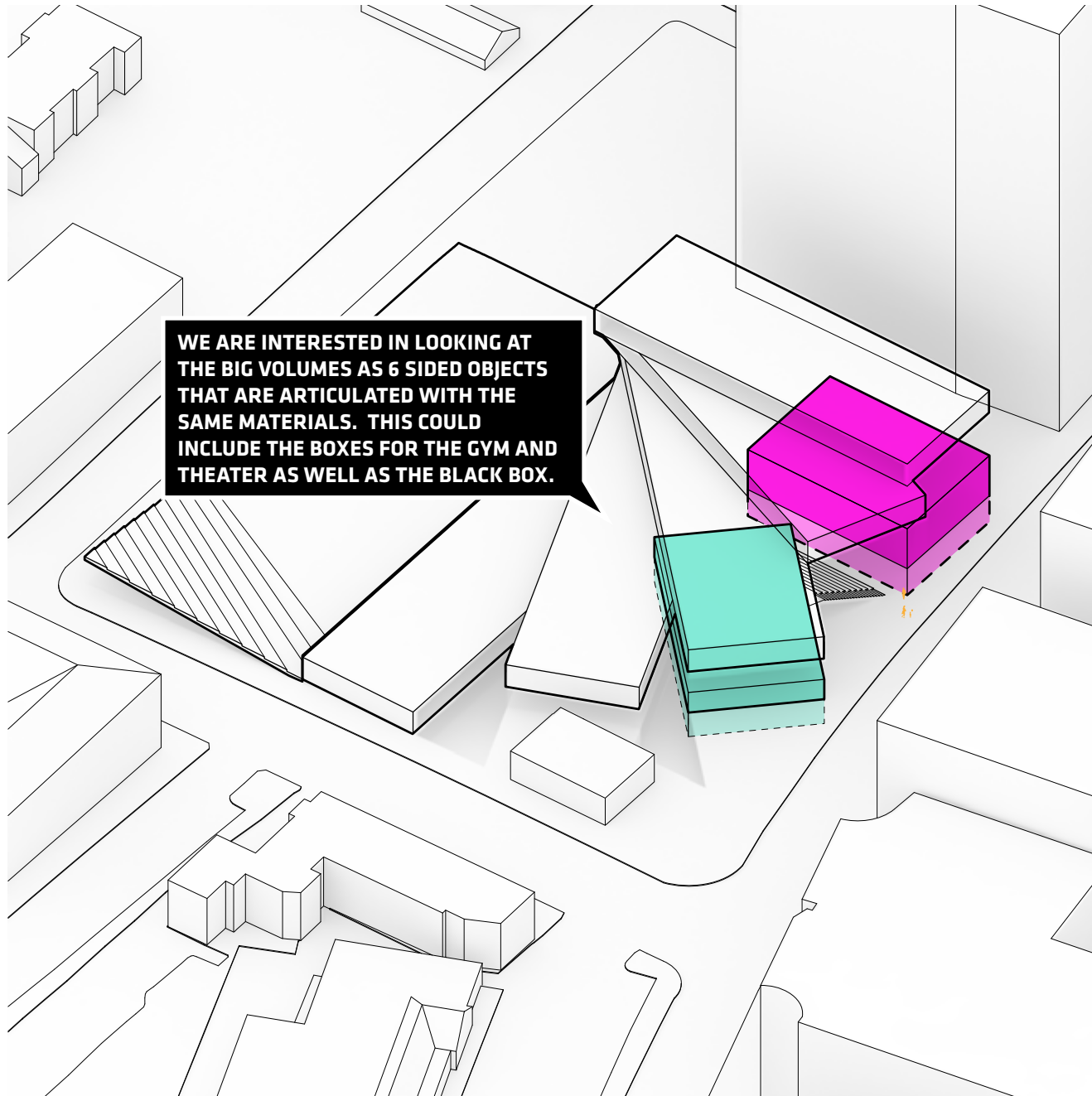


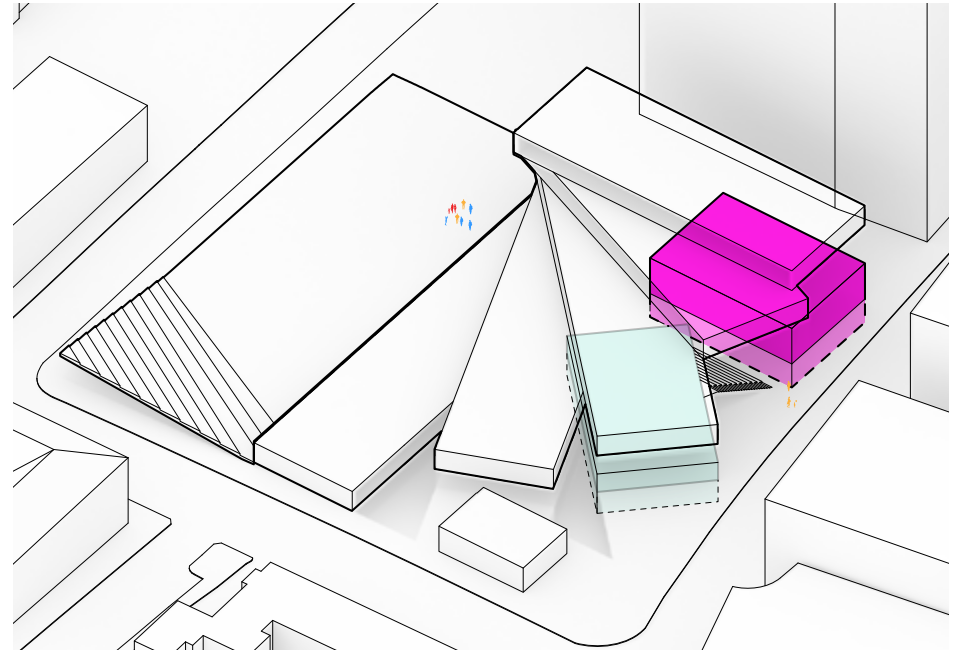


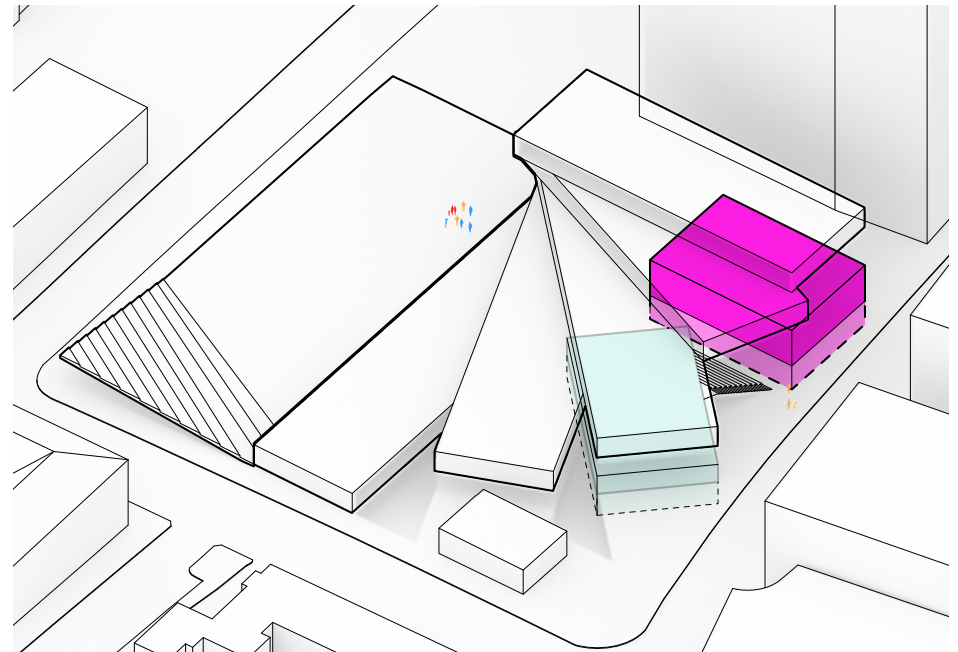




MATERIALITY CONCEPTS

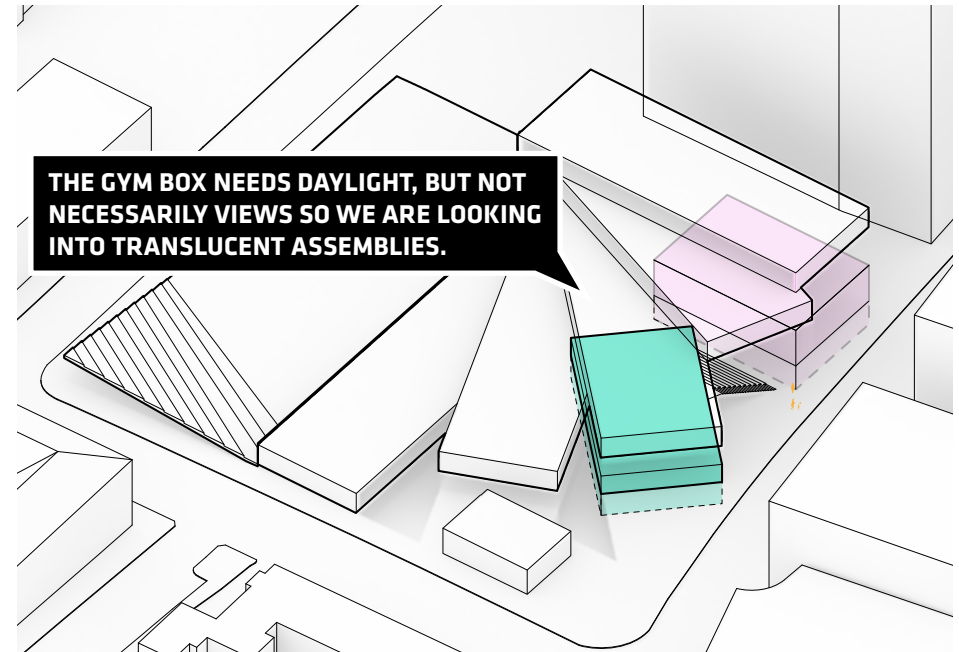








GLASS BLOCK MAKES A LOT OF SENSE AS A REFERENCE TO THE STANDARD GYMNASIUM WINDOWS EVERYWHERE.



THE GYM BOX NEEDS DAYLIGHT, BUT NOT NECESSARILY VIEWS SO WE ARE LOOKING INTO TRANSLUCENT ASSEMBLIES.



THE TOP OF THE GYM IS THE LIBRARY, WE COULD DO A GLASS BLOCK FLOOR BETWEEN THE 2?

CONNECTING MAIN LOBBIES



