

WILSON SCHOOL

1601 Wilson Boulevard, Arlington, VA

Building Level Planning Committee

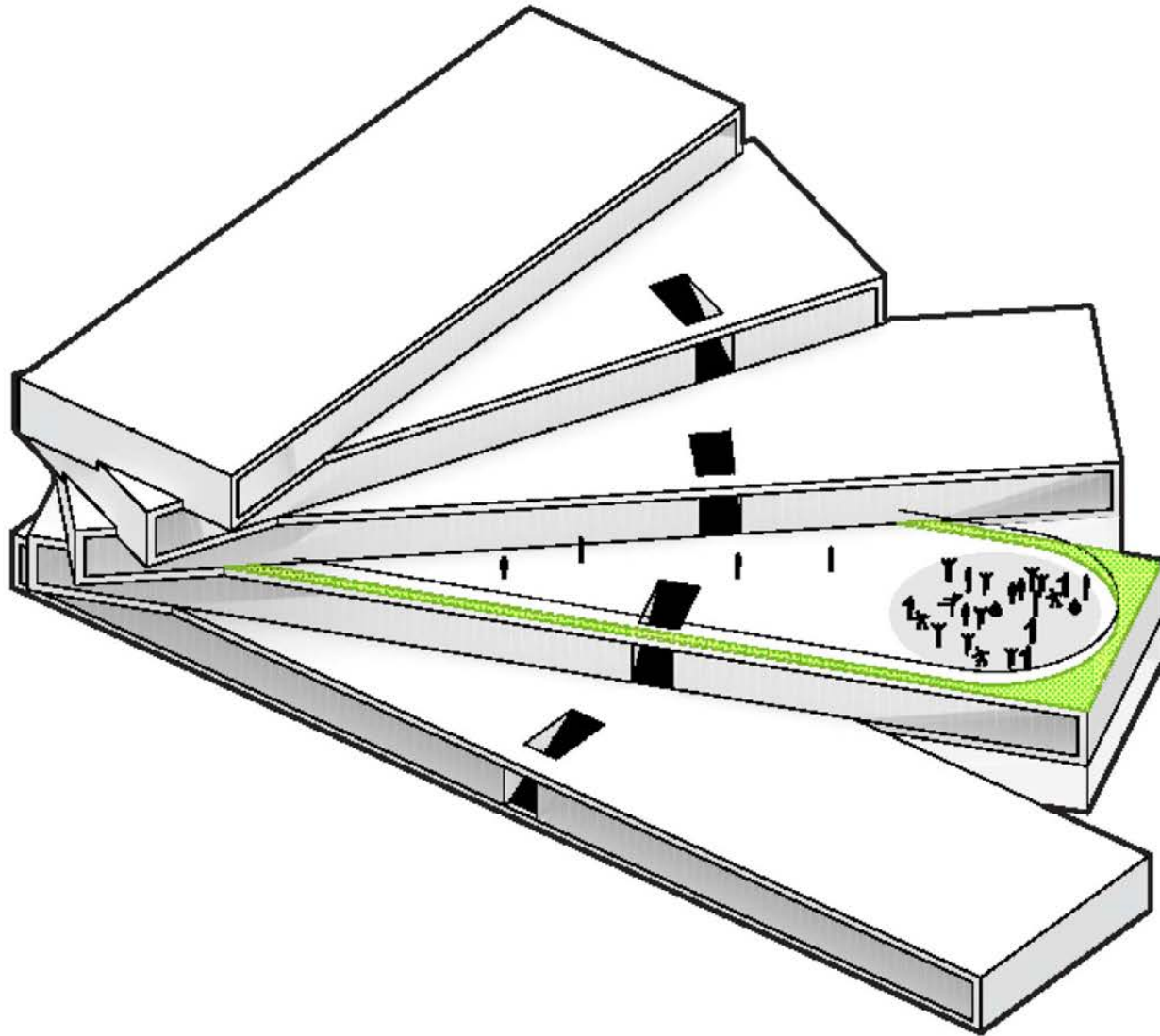
March 30, 2016

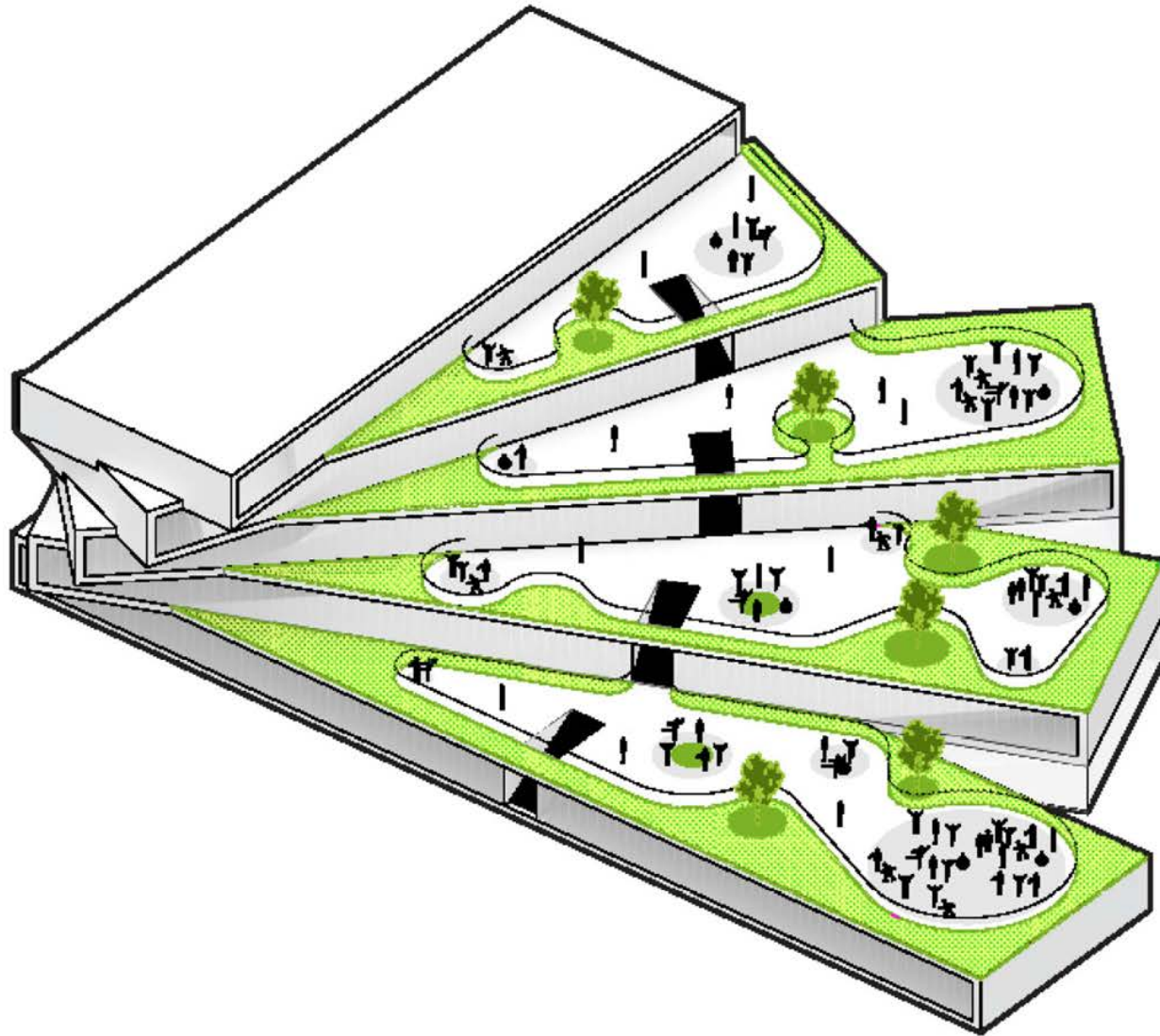
LEO A DALY

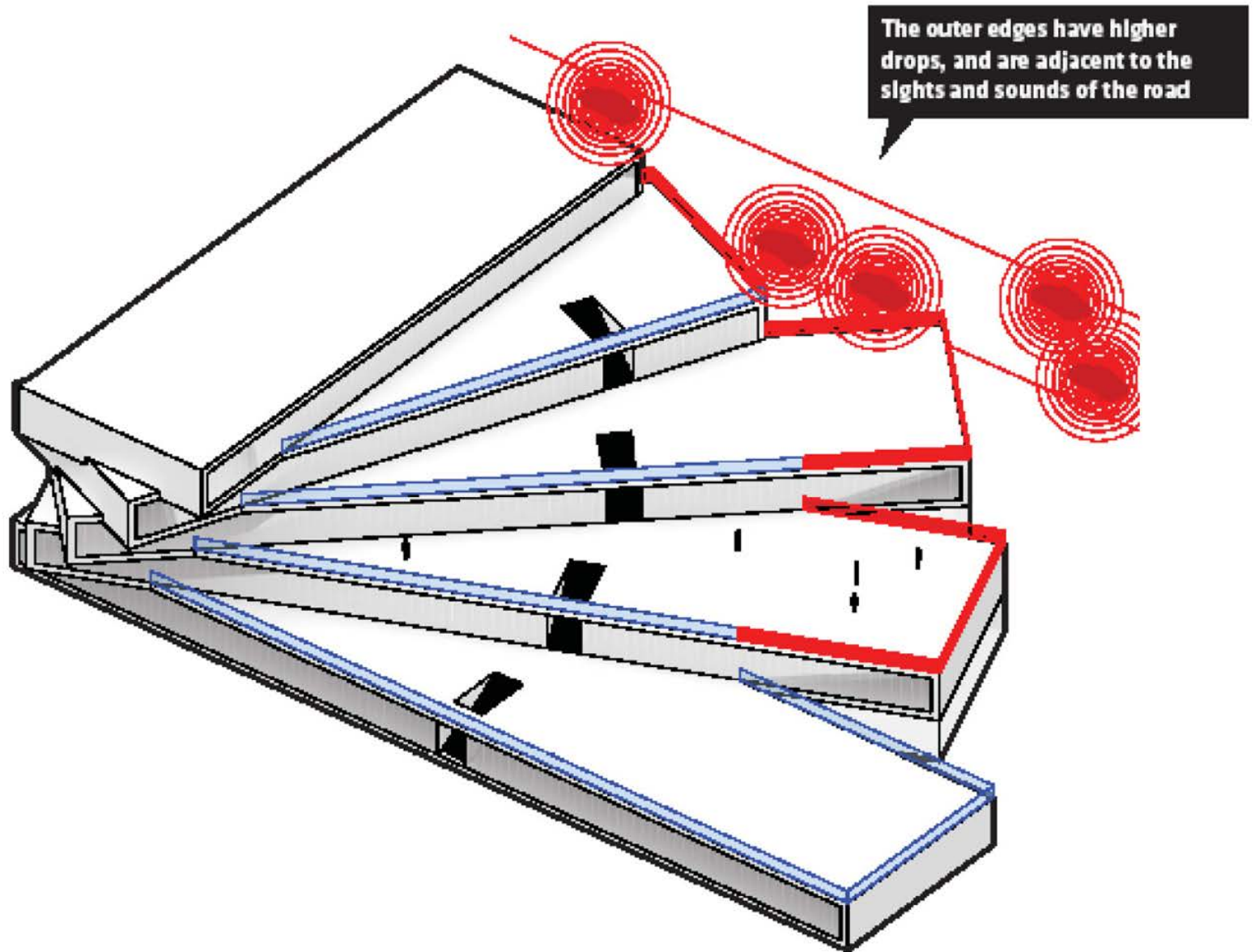


BIG

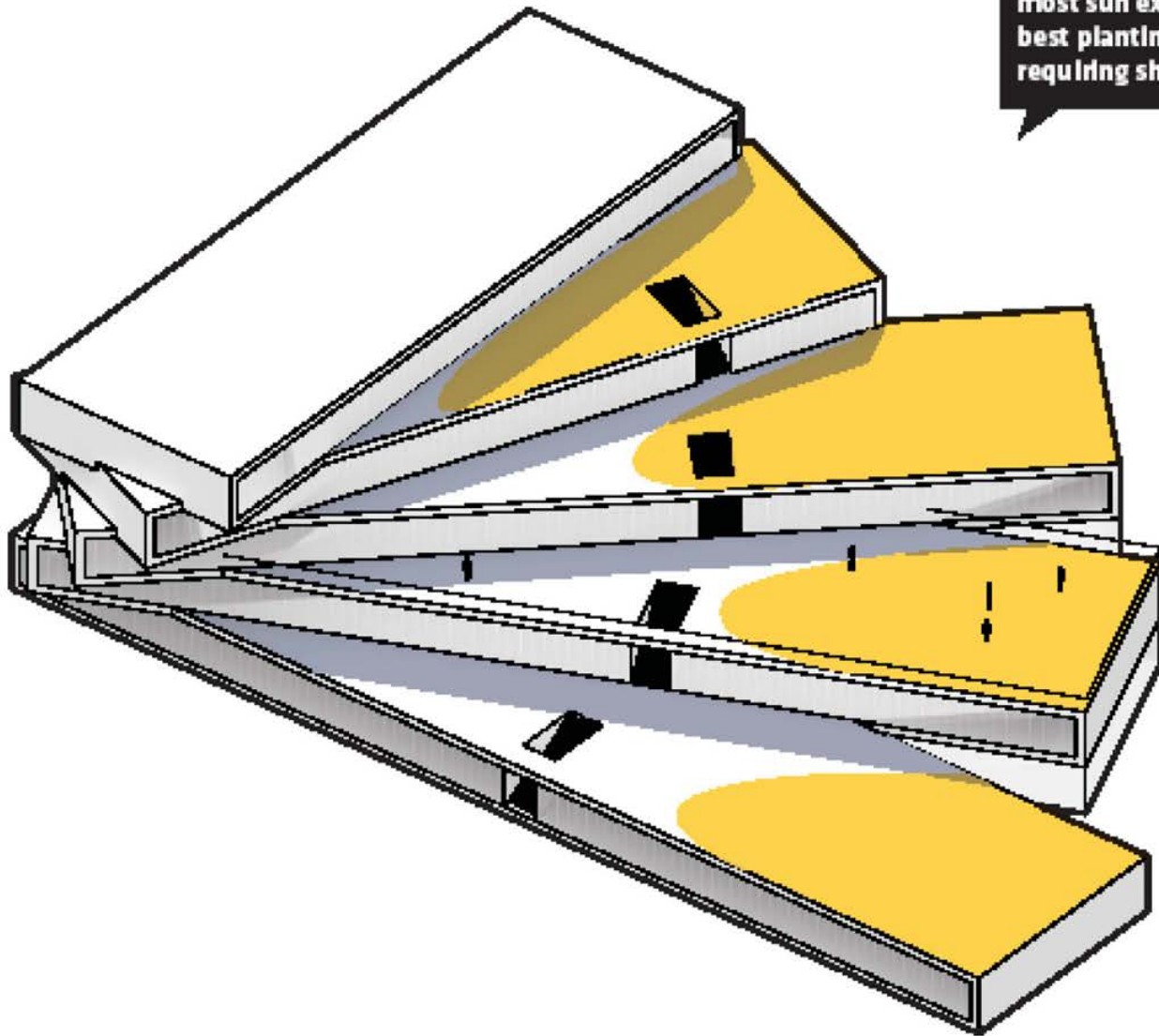
TERRACES



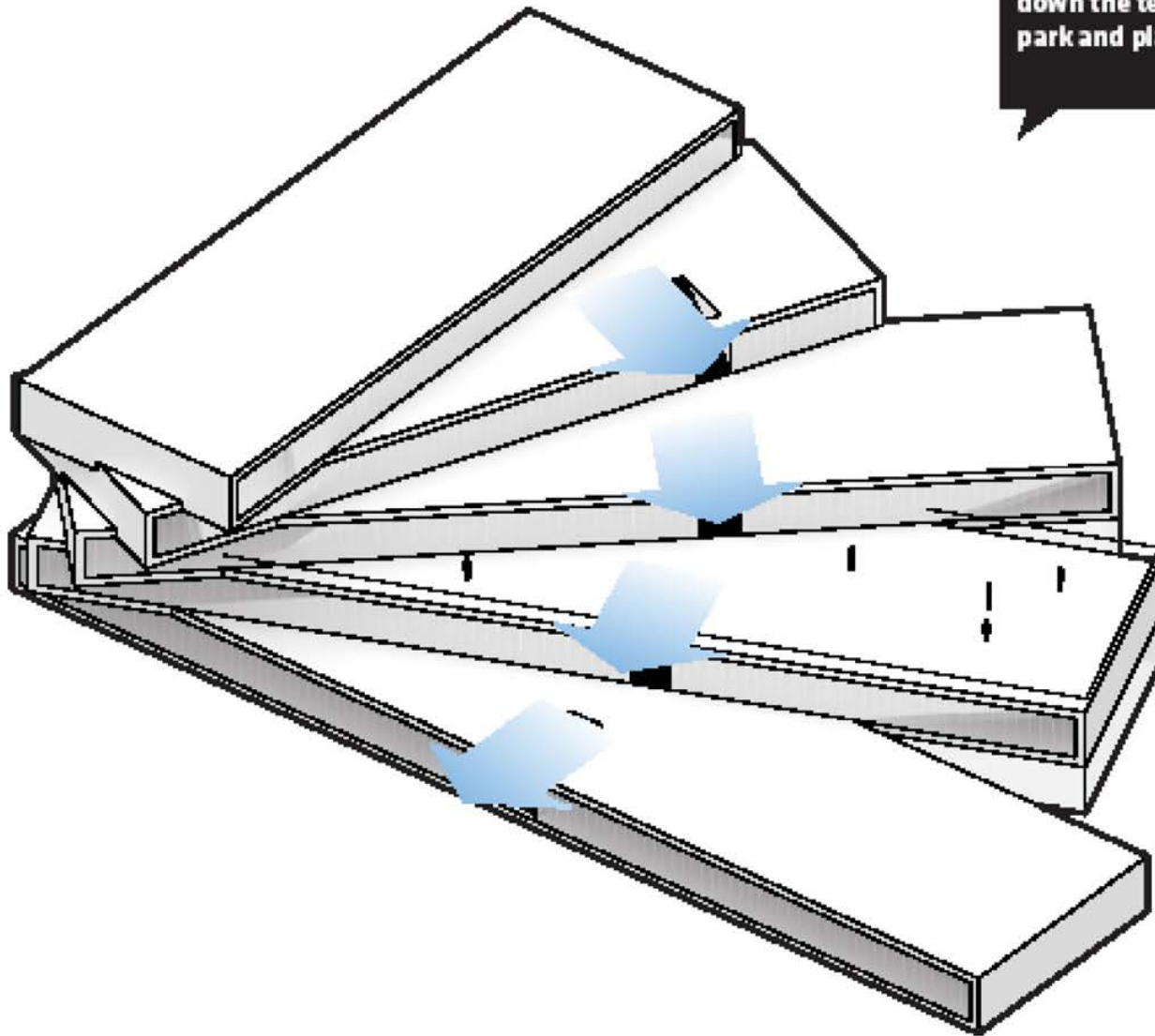




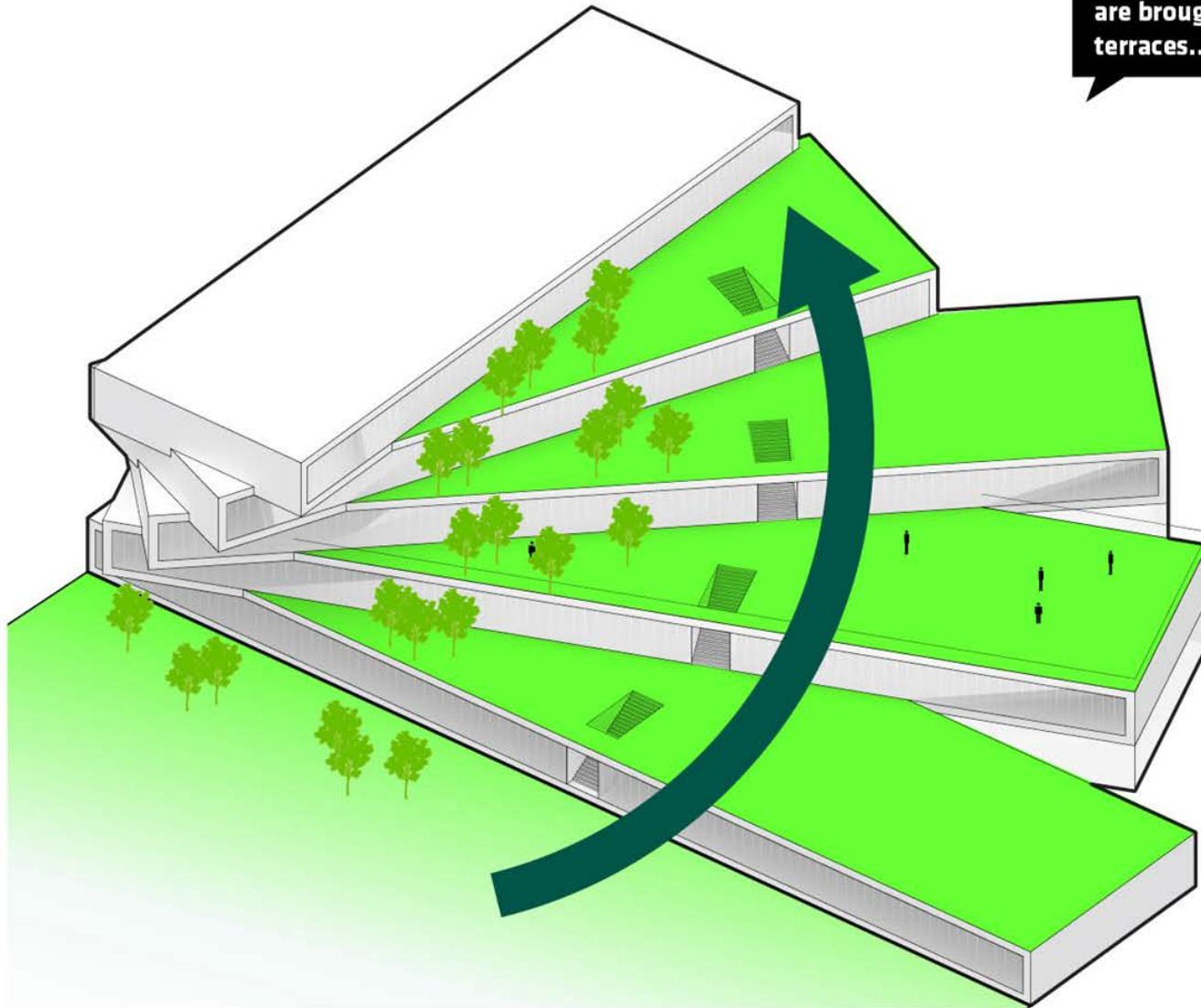
The outer tips of the bars get the most sun exposure, providing the best planting opportunity, but also requiring shade for human comfort

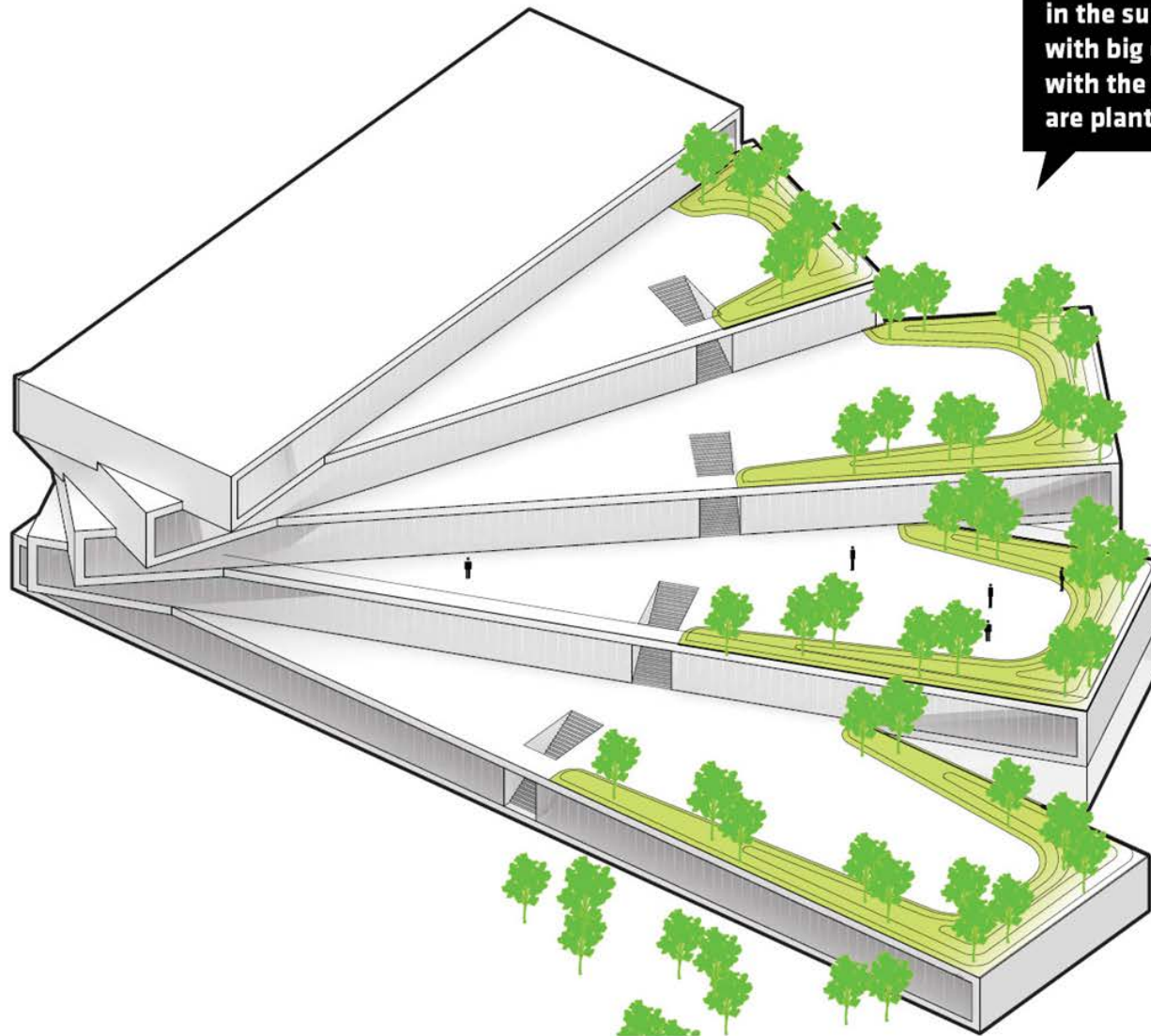


Preferred views are oriented back down the terraces towards the park and play fields



The park and play fields
are brought up onto the
terraces...





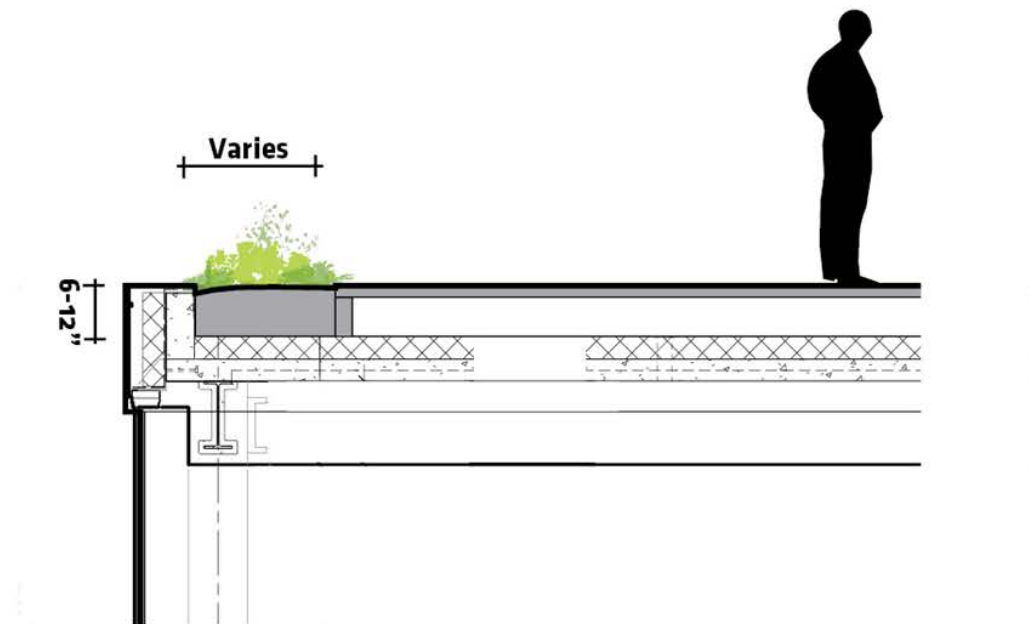
At a minimum, to provide shade in the sunniest areas, buffer edges with big drops, and create continuity with the park, the tips of the bars are planted with trees.

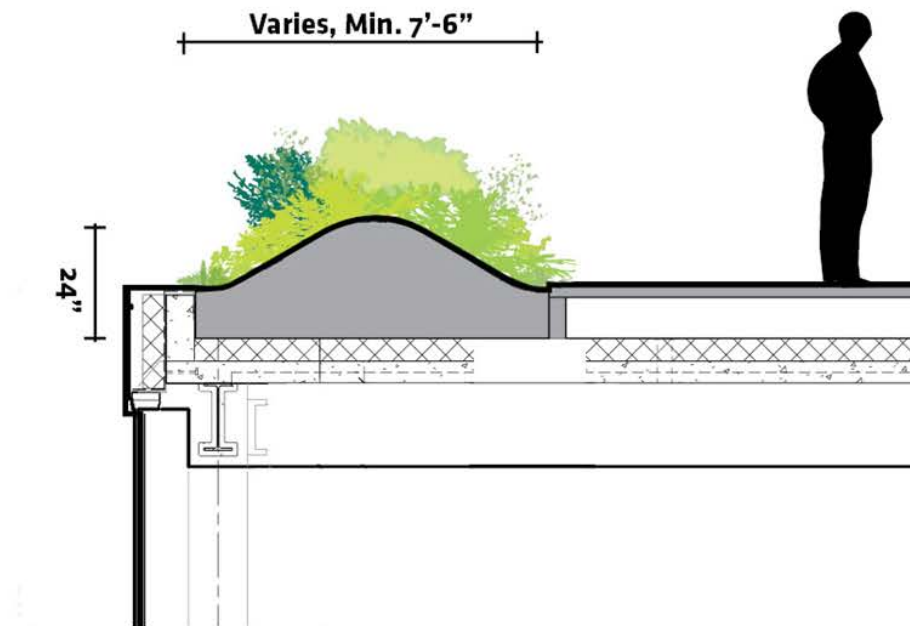
...making nature a backdrop to the learning environment...

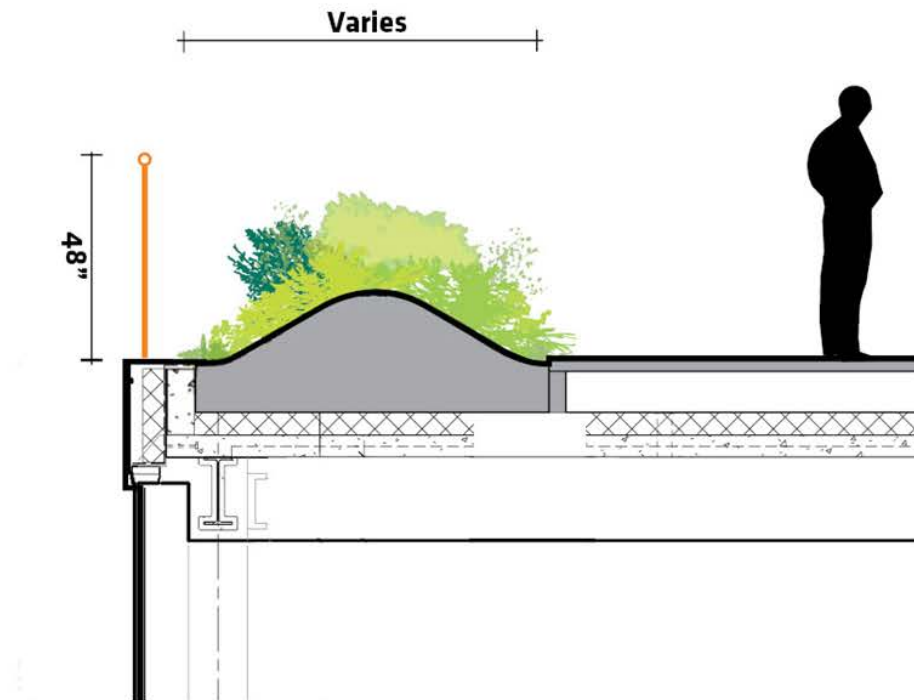


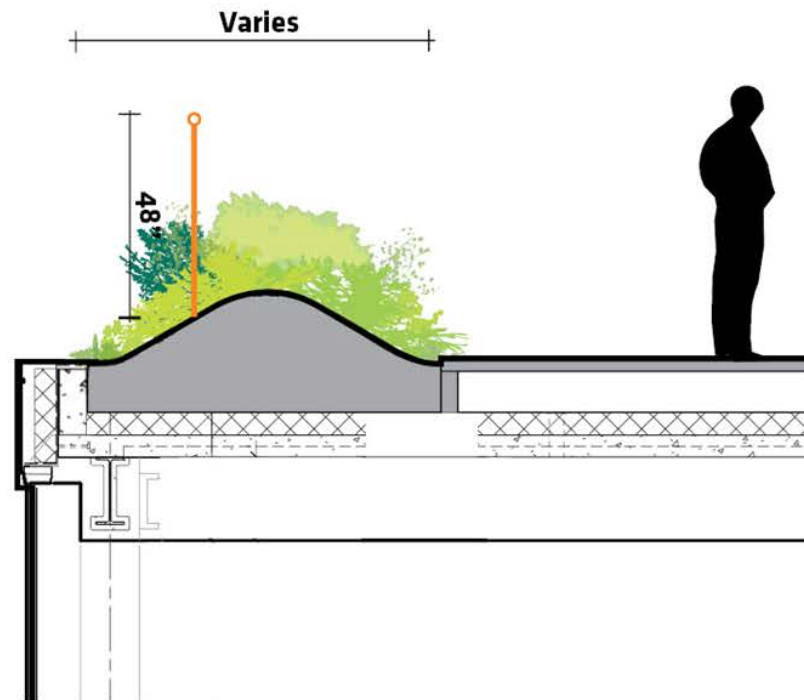
EDUCATION + NATURE + BIOPHILIA

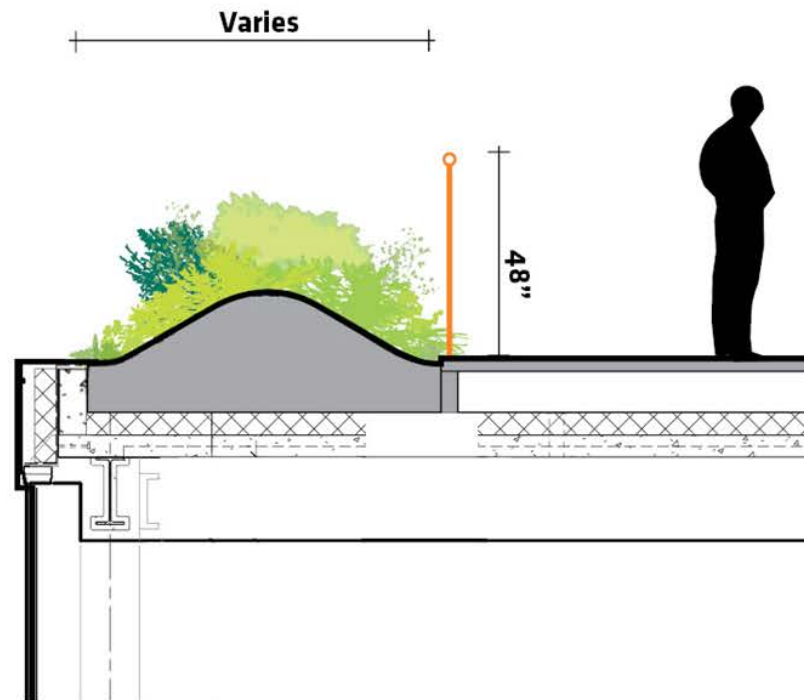
PLANTING STRATEGY

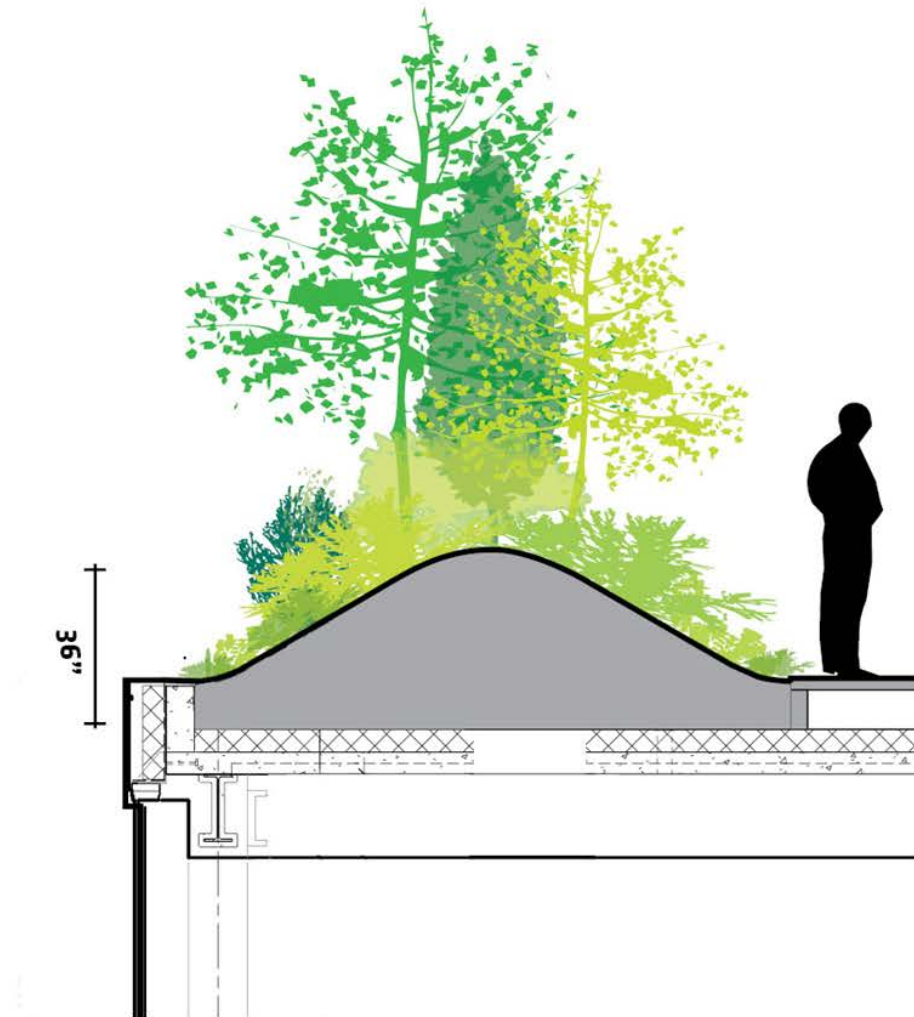












The School sits in a rich diversity of landscapes, at the head of one of the most significant estuaries in the US

Maryland

Washington DC



Potomac River

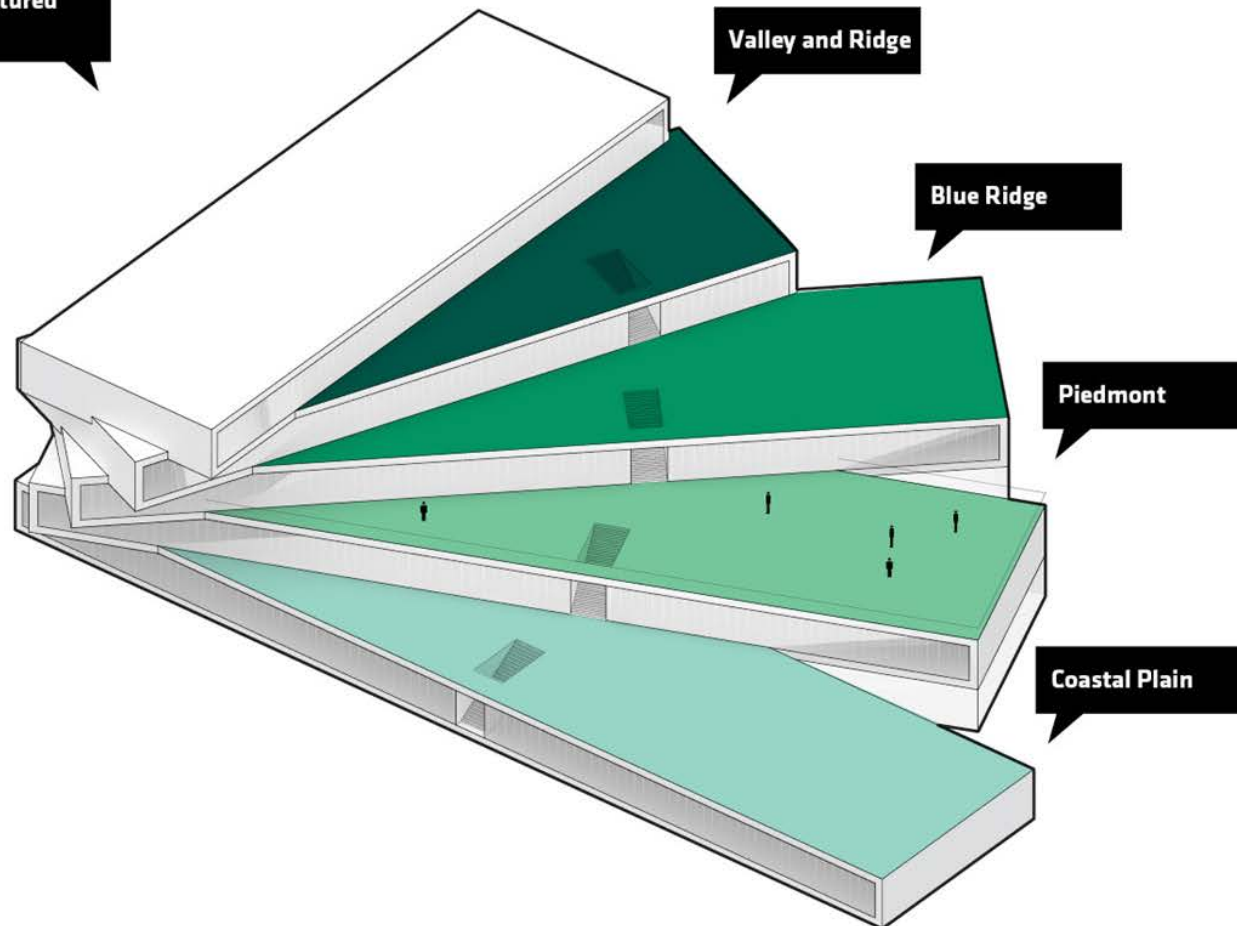
Chesapeake Bay

Virginia

- Valley and Ridge Region
- Blue Ridge
- Piedmont
- Coastal Plain

REGIONAL LANDSCAPE TYPOLOGIES

Following the same logic,
from high to low, the
terraces become captured
landscapes



CAPTURED LANDSCAPES

...and inform program,
material, and planting



BLUE RIDGE



VALLEY AND RIDGE



PIEDMONT



COASTAL PLAIN

REGIONAL LANDSCAPE TYPOLOGIES



Red Maple



River Birch



Magnolia Merrill



Sumac



Ferns



Sedge



Farming



Coastal Grasses



Blue Ridge



Valley and Ridge



Piedmont



Coastal Plain



Granite - boulders and scree



Small Boulders



Mulch and Gravel



Alluvial Gravel

The Blue Ridge is home to a mature hardwood forest, with low understory, and granite & schist outcrops

The Valley & Ridge region is a mix of mature hardwood forest, with emergent species and more understory plants. Granite boulders and gravel are common.

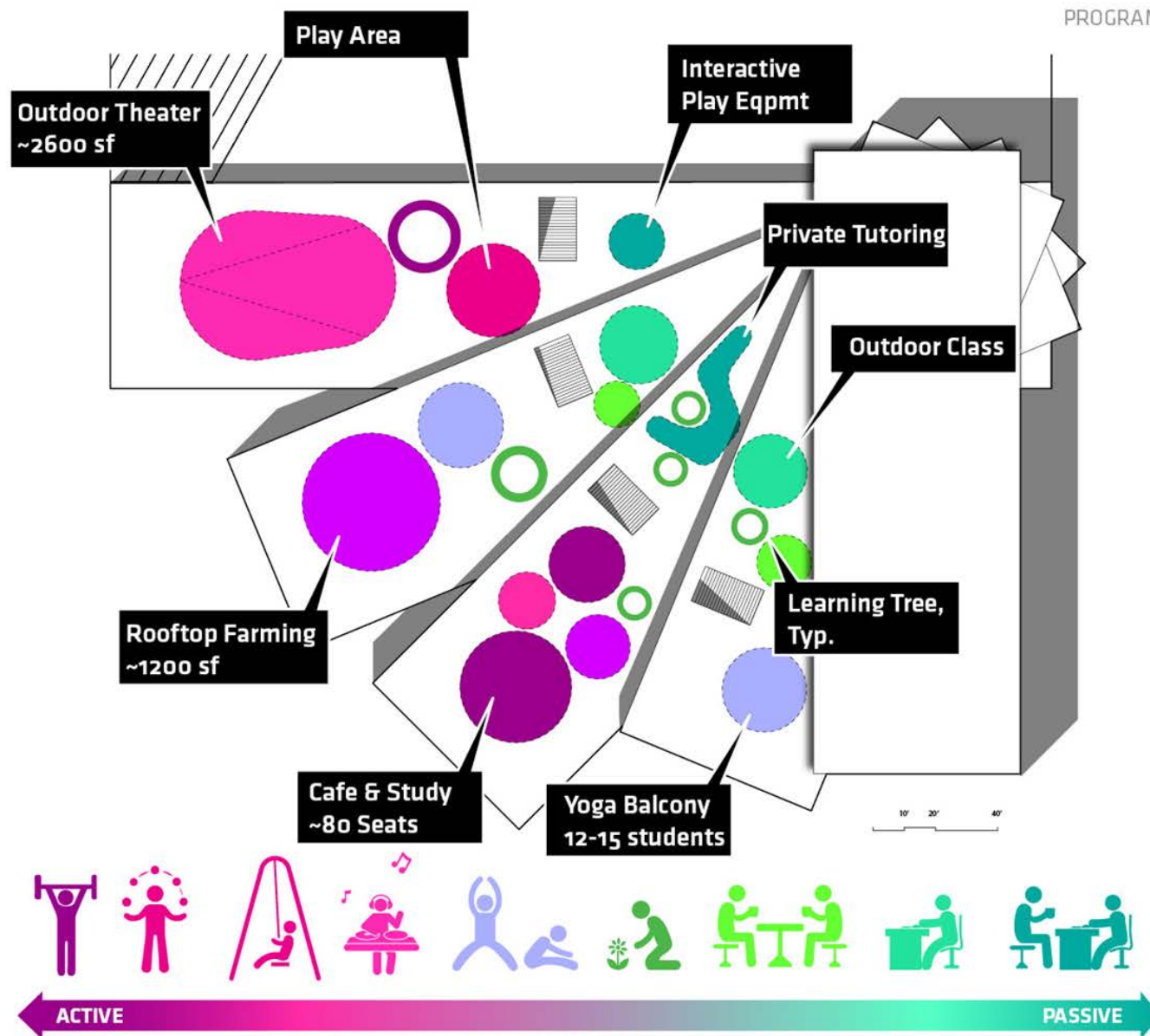
The Piedmont is the agricultural heart of Virginia. Rich soil and a broad variety of native plants characterize the rolling landscape

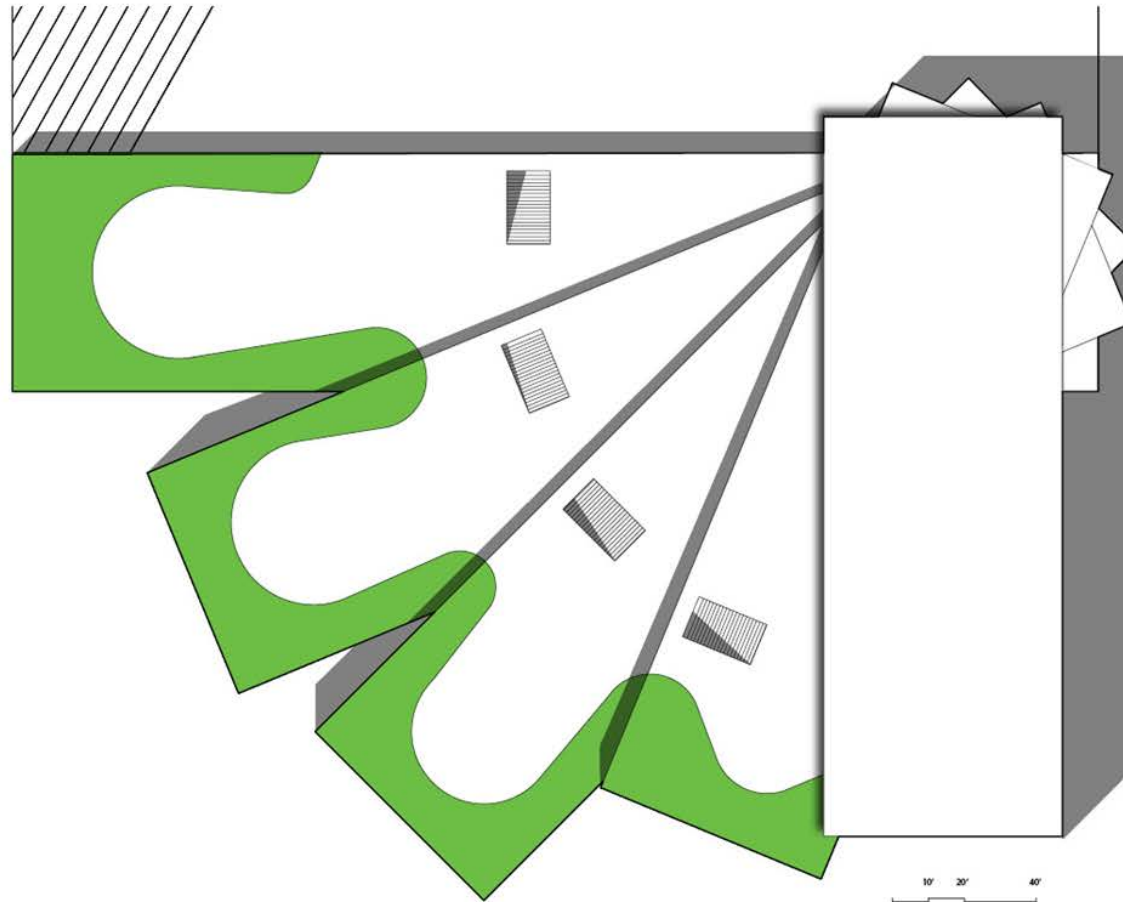
The Coastal Plain Region is a regularly inundated flat area made up of sedimentation and coastal native grasses, trees and shrubs

REGIONAL LANDSCAPE TYPOLOGIES

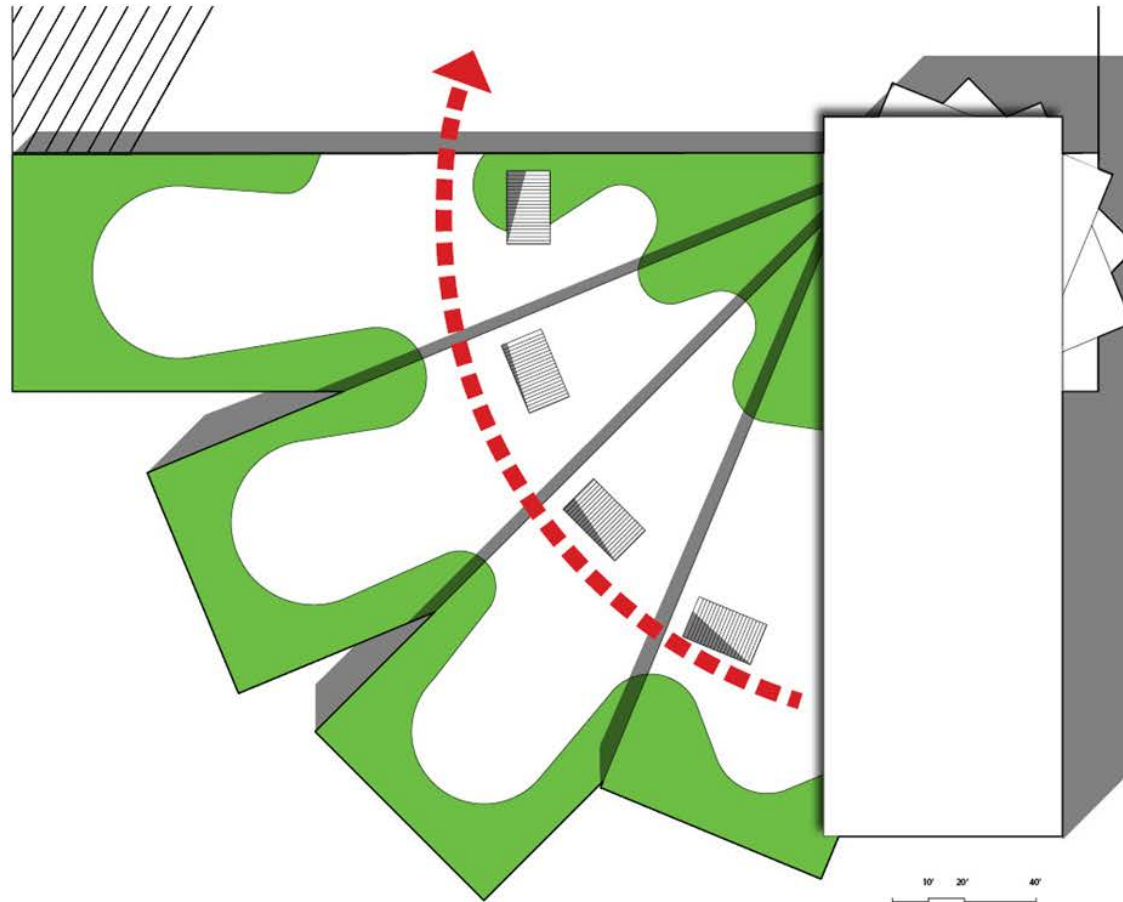


PROGRAMMING & PLANNING





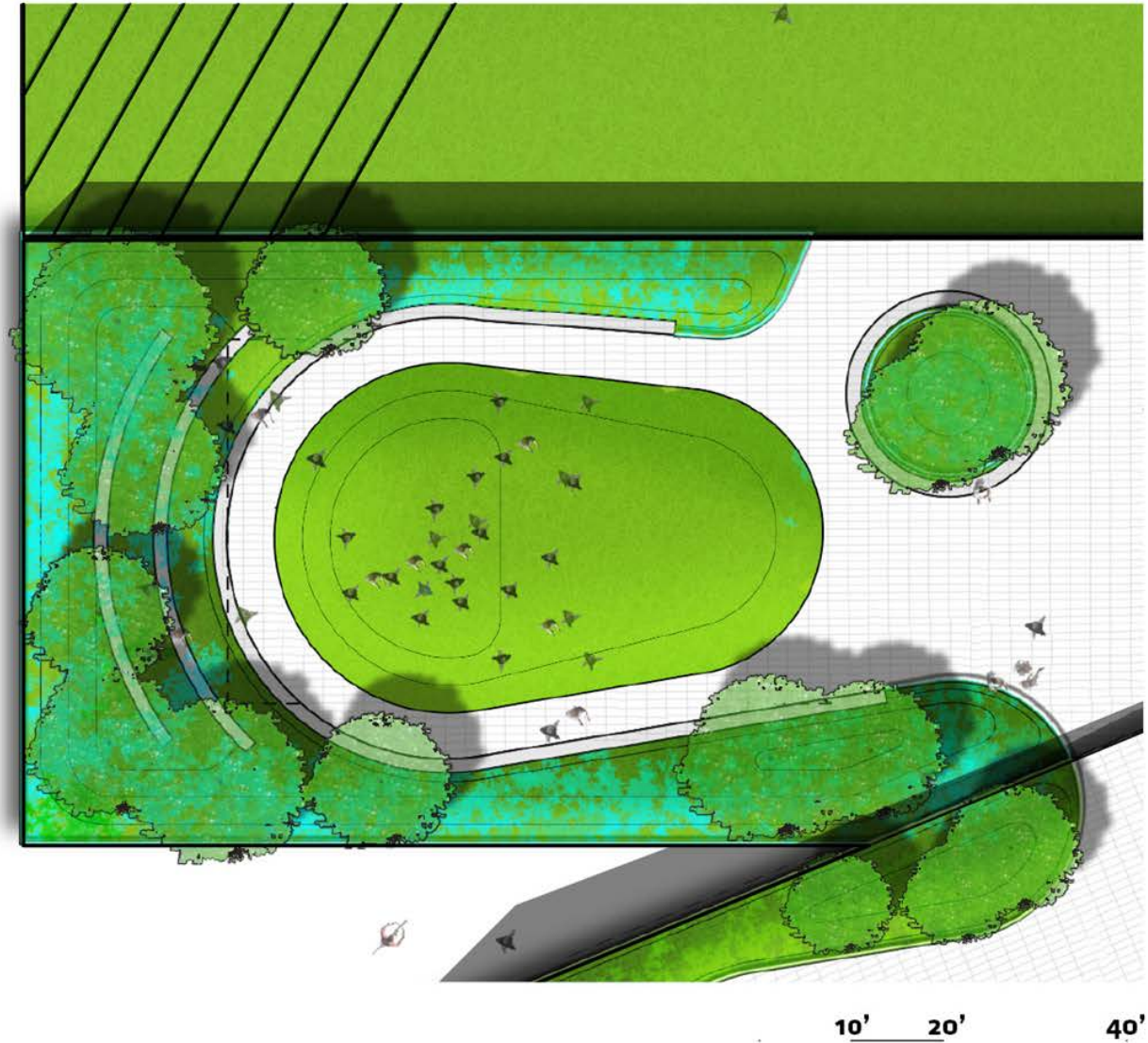




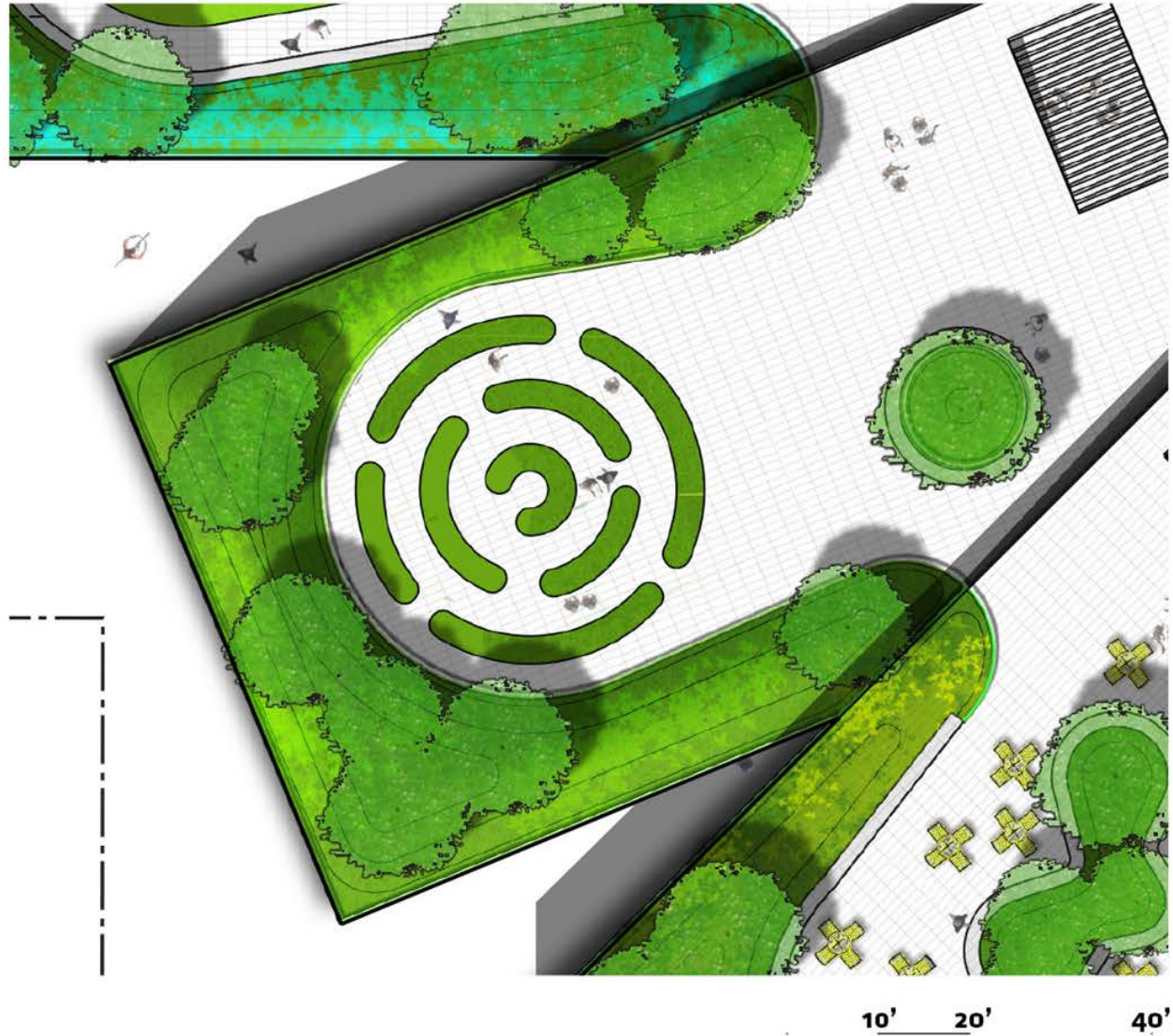




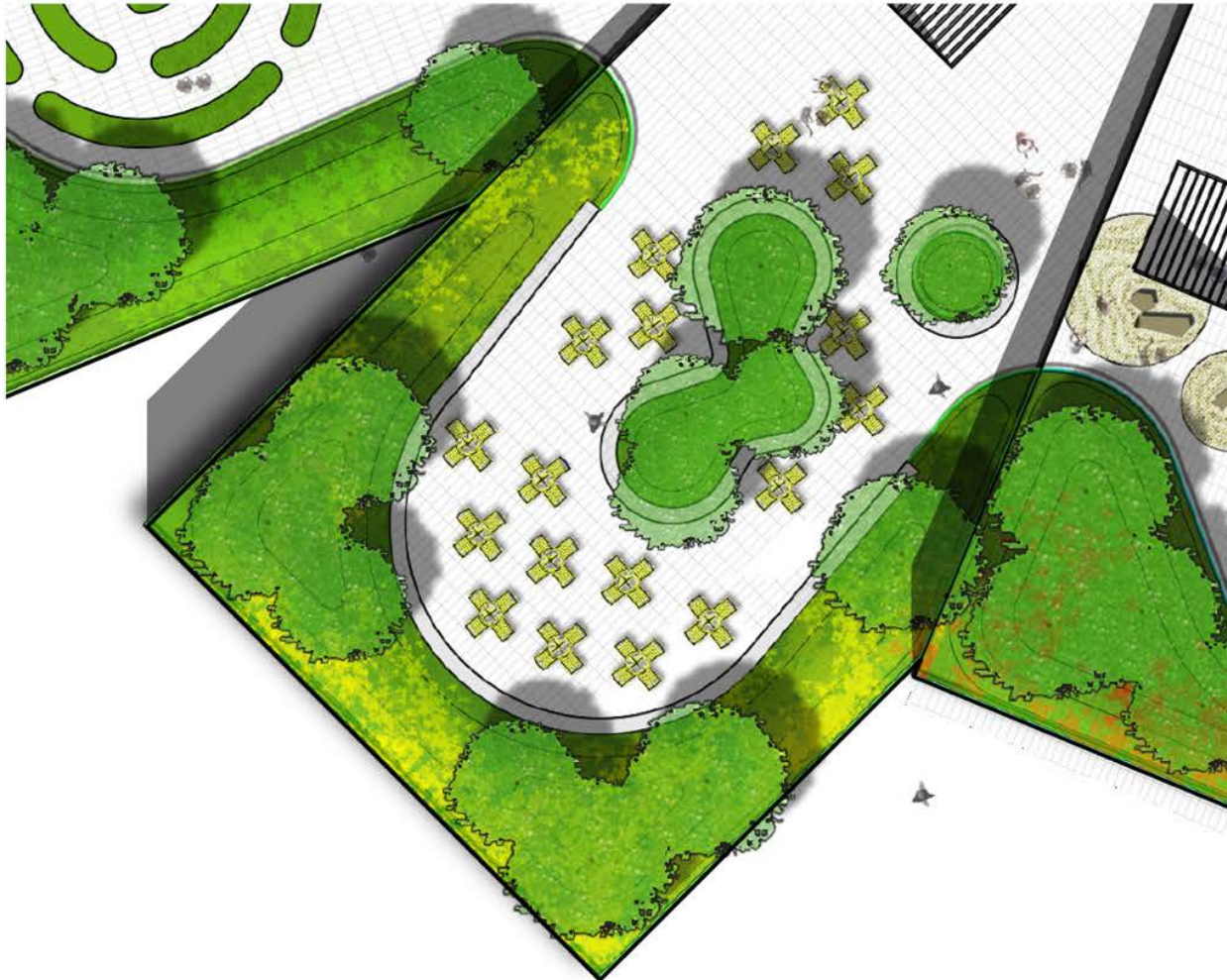












10' 20' 40'



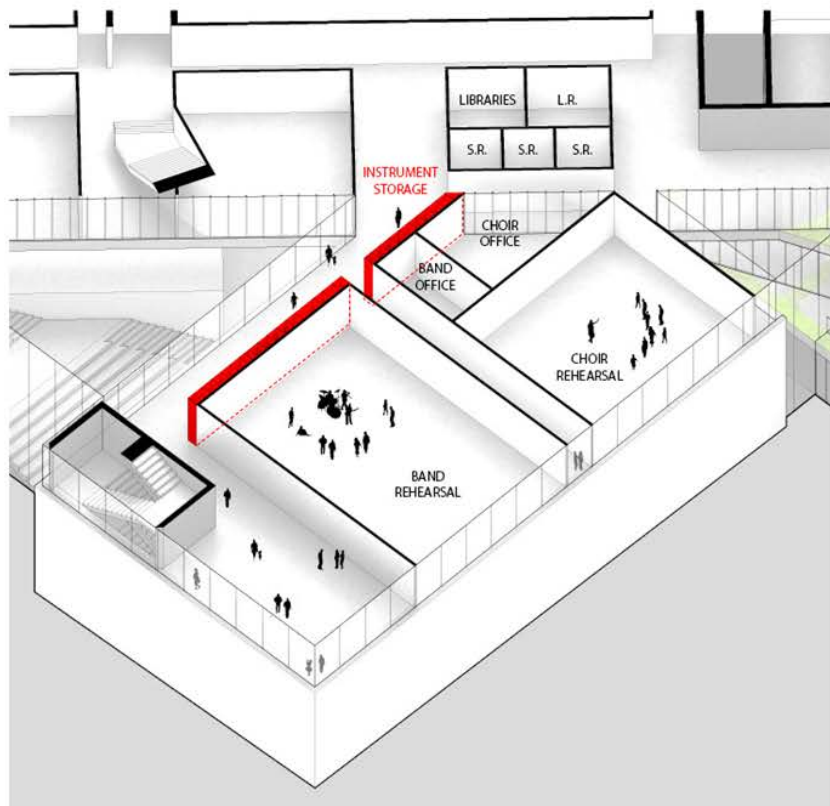




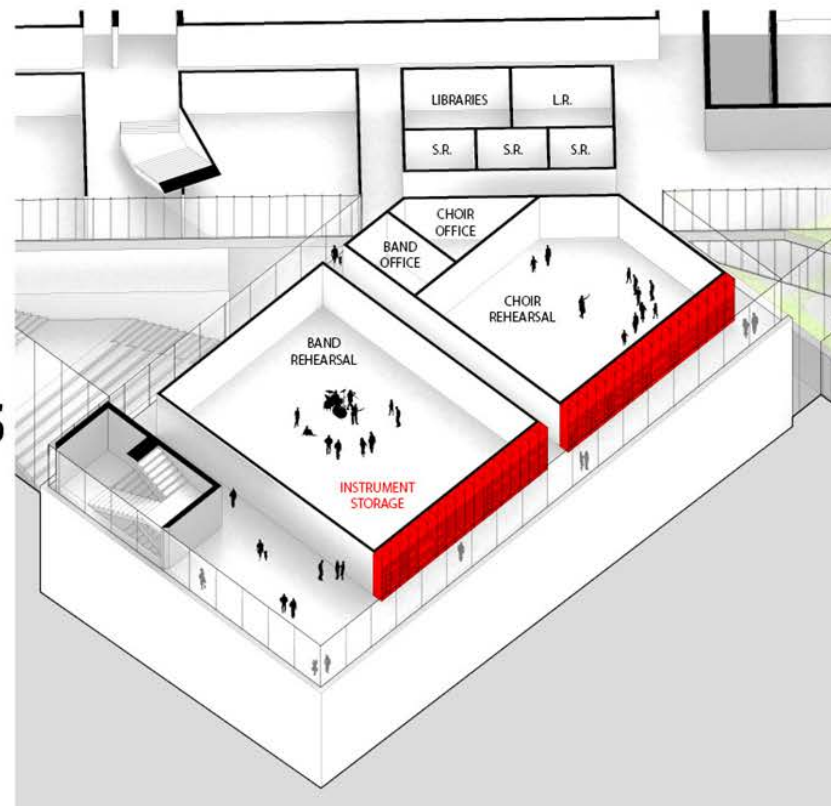
MUSIC ROOMS





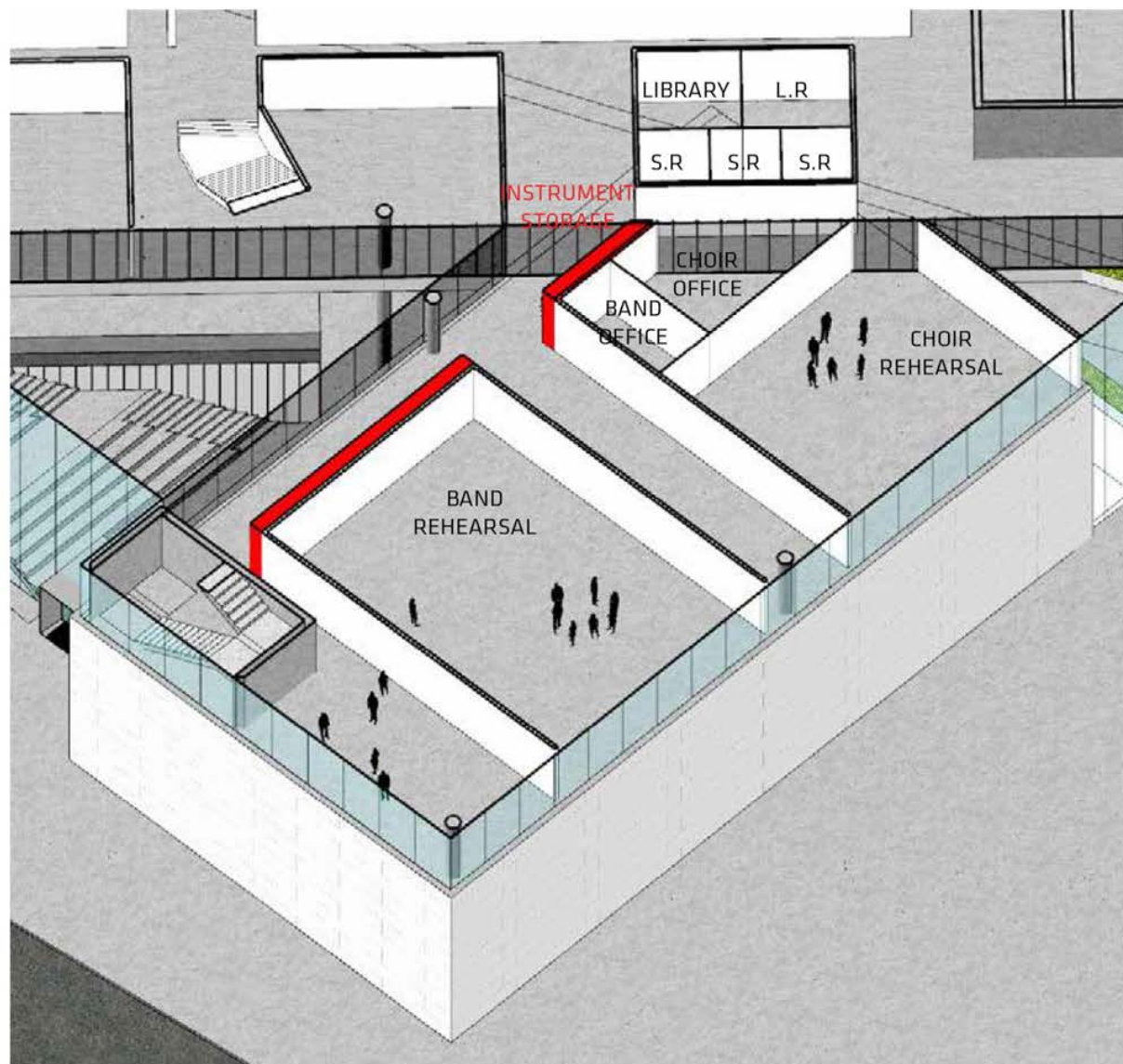
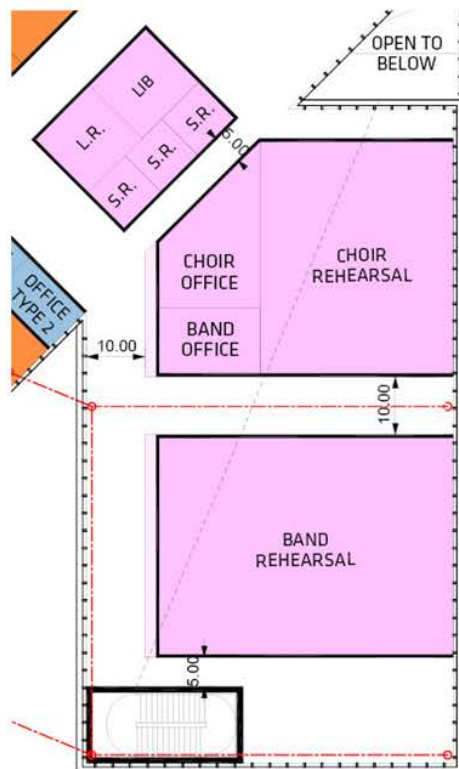


VS



PARTITIONED ROOMS

FLOATING ROOMS



LOBBY CIRCULATION

