

WILSON SCHOOL

1601 Wilson Boulevard, Arlington, VA

Building Level Planning Committee

May 11, 2016

LEO A DALY



BIG

School Board Charge to BLPC

1. Maintain focus on bringing the projects in on-time and within budget with the number of seats planned, at minimum. The budgets set for these projects are maximums. To the extent possible, the School Board requests the committees consider a range of costs. Efforts should be made to bring the projects in under the maximum dollars allocated, when possible.

School Board Charge to BLPC

2. Work collaboratively with the County government, the neighborhood, and larger community to create plans that are broadly supported, incorporating possible cooperative efforts and joint planning when practical and affordable.

School Board Charge to BLPC

3. Consistent with Arlington Public School's Core Values and Strategic Plan Goal #4, work together to provide a design for an optimal learning environment that is flexible, energy efficient, sustainable, and accommodates the need for sufficient green space. The plans should acknowledge the history of each site.

UPDATE & SCHEDULE



Schematic Design BLPC & PFRC Meetings

Throughout the spring & winter we will meet with the BLPC & PFRC every few weeks to discuss relevant issues with the project and get feedback to guide the project forward. The hope is to get BLPC & PFRC approval of the Schematic Design by the end of May.



School Board Information Briefing

With approval from the BLPC we will present the schematic design to the School Board along with a Schematic Design Report. This report will include plan layouts, detailed narratives of building systems, and associated cost estimate.



School Board Action Item

It is the team's intent that the design and associated cost estimate will be approved at the June 16th School Board meeting. At this meeting the School Board will also provide direction in regards to the sustainability targets for the building



Use Permit Submission

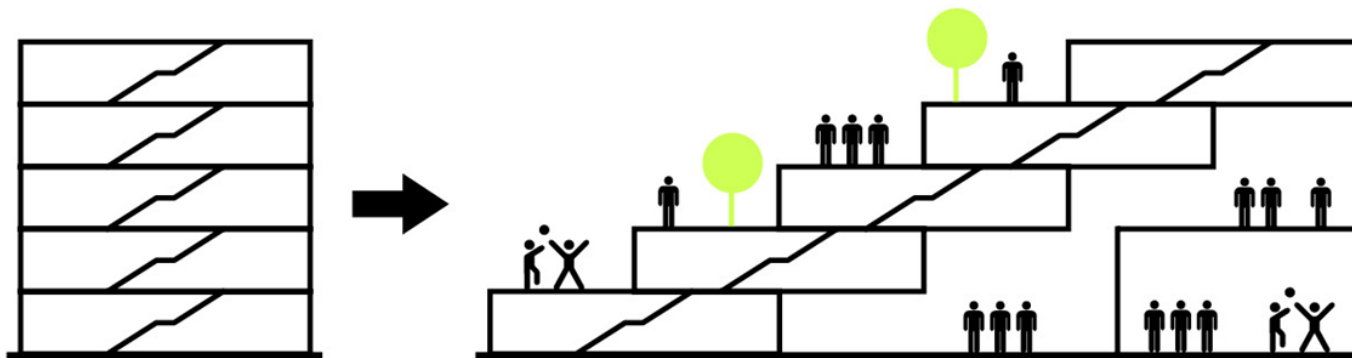
The information developed in the Schematic Design phase will allow APS to submit to the county for a Use Permit.



County Board Meeting/ Use Permit Approval

Once the use permit is submitted, the County, APS and the design team will work through various issues related to the building that are relevant to the use permit. This process is culminated in a county board hearing where the use permit would be granted.

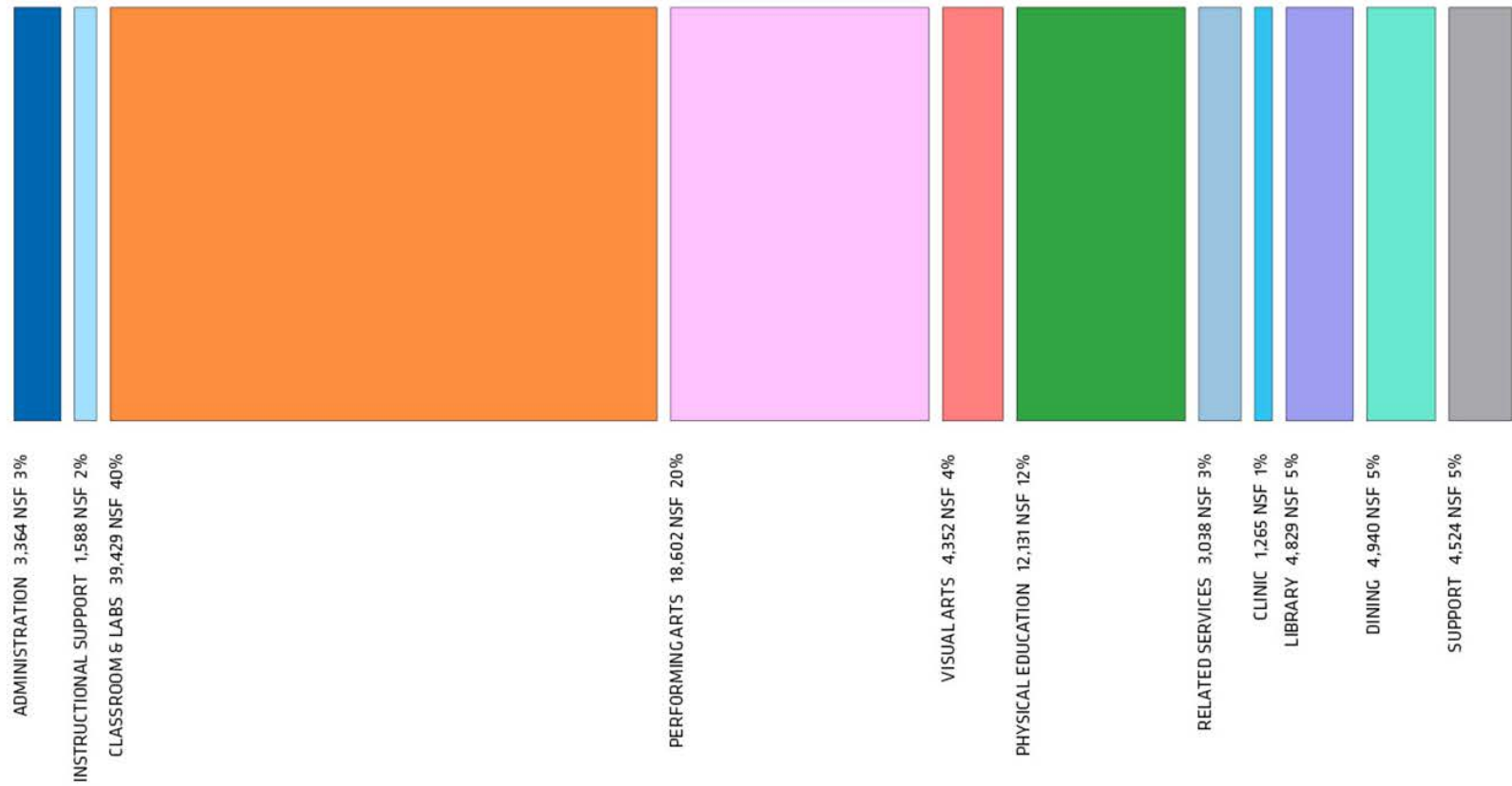
DESIGN OVERVIEW

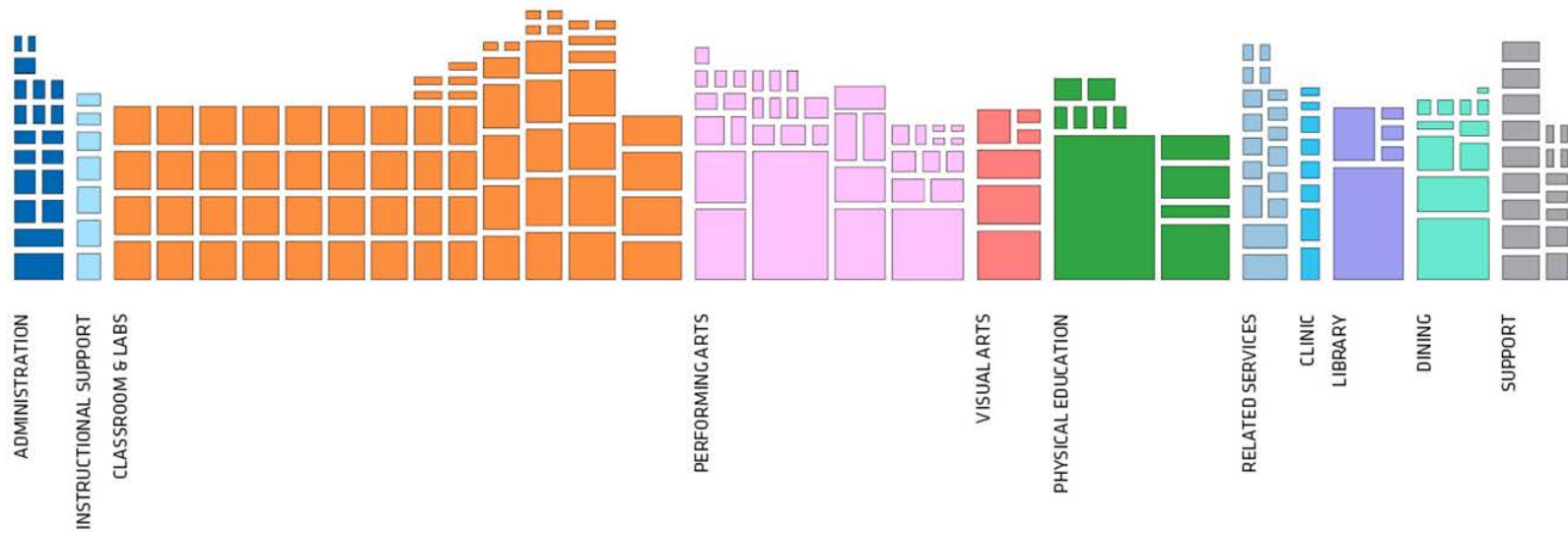


VERTICAL SCHOOL + COMMUNITY

The small site requires that the project be designed across multiple levels. A key objective for the design was to maintain the feeling of a 1-story school building while still having a vertical school and the efficiencies afforded by it.

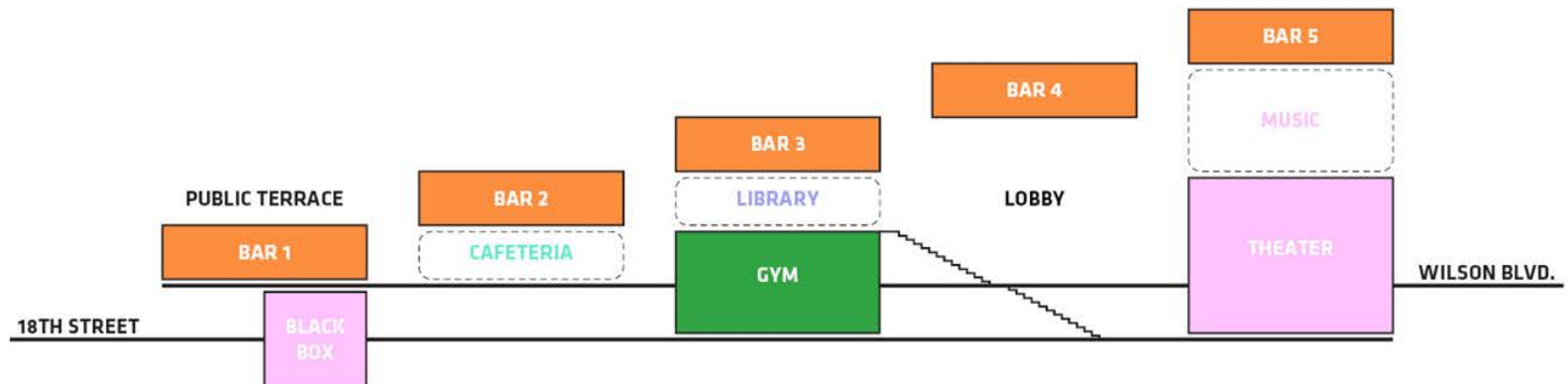
BUILDING PROGRAM

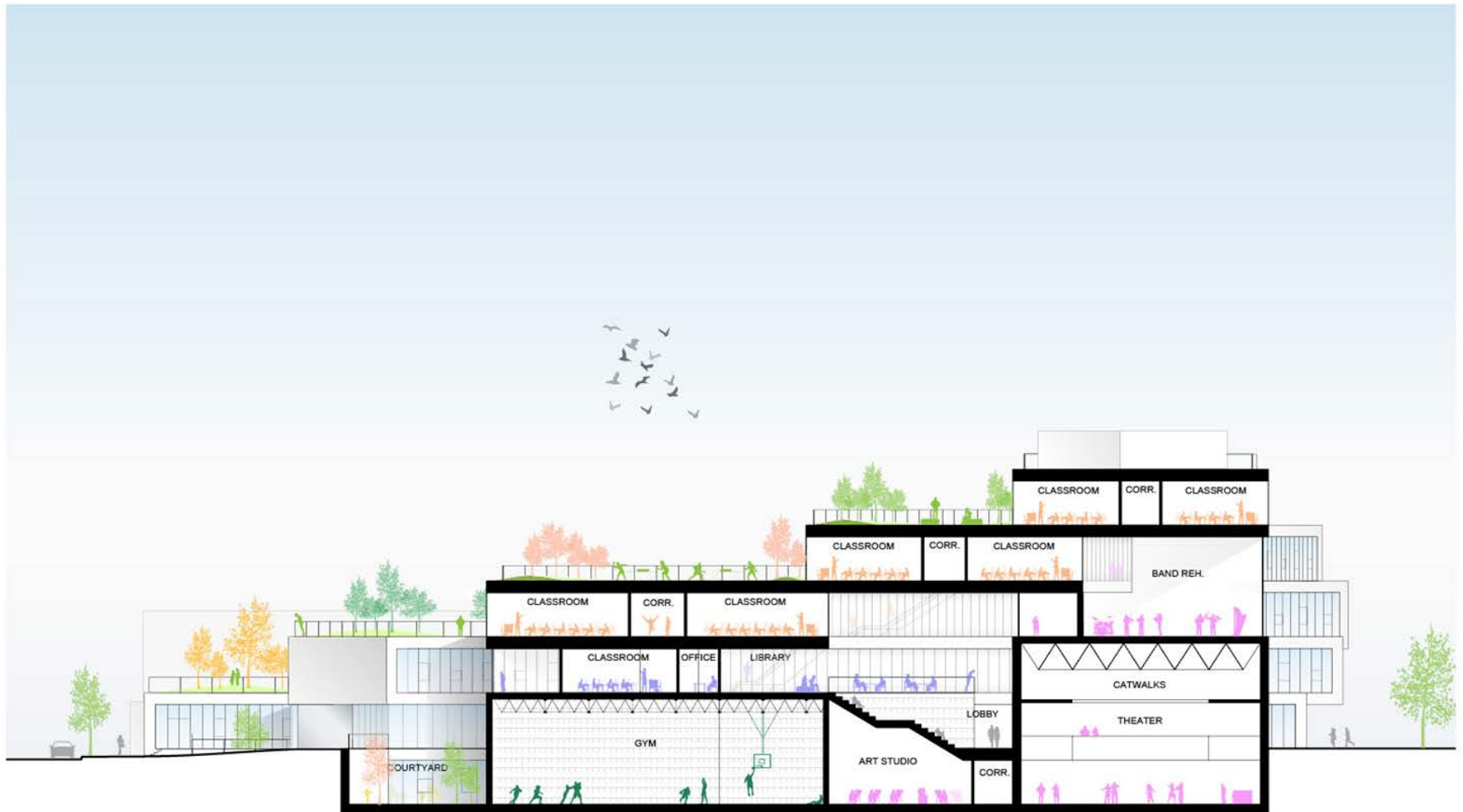


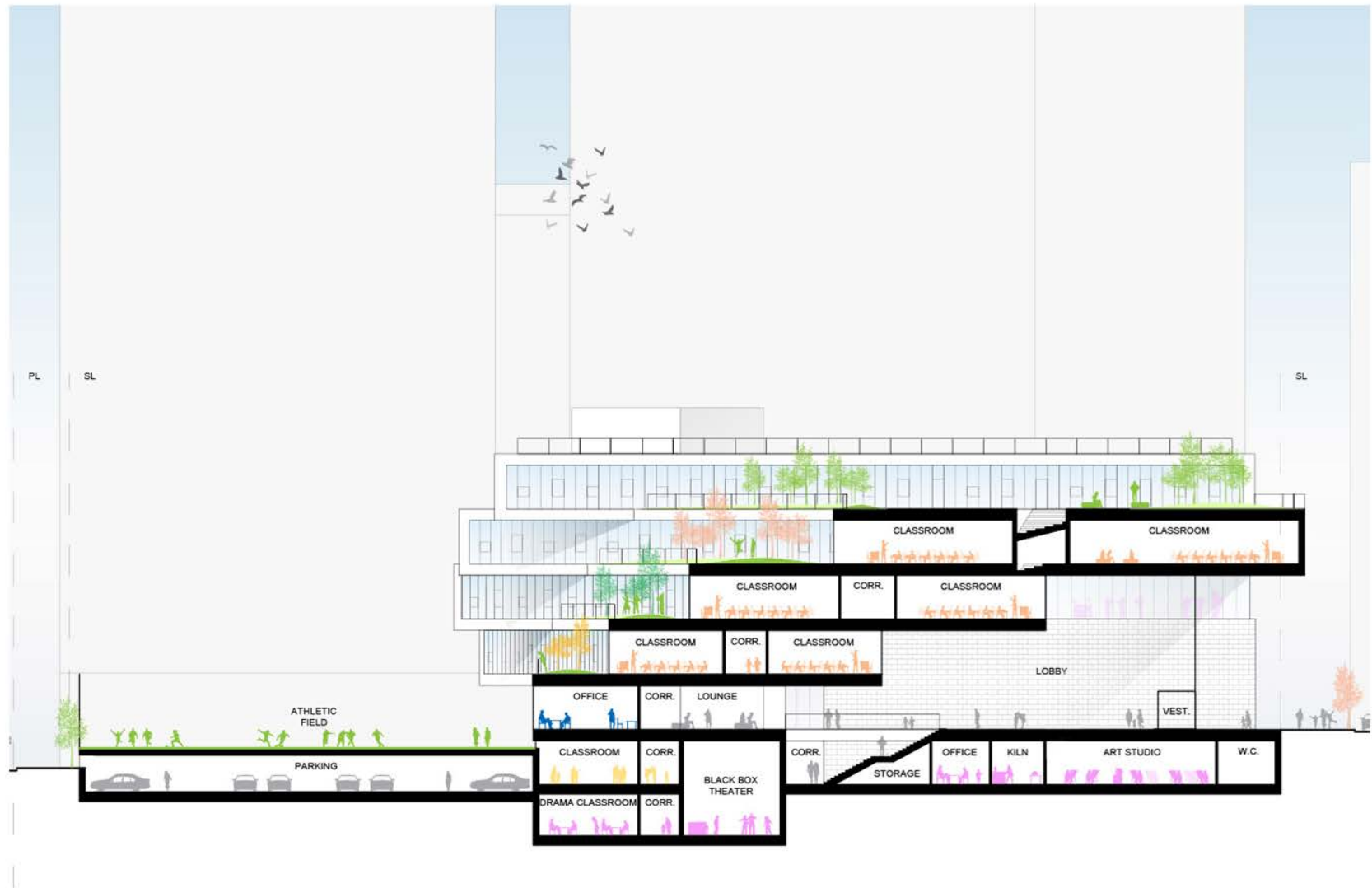


BUILDING ORGANIZATION



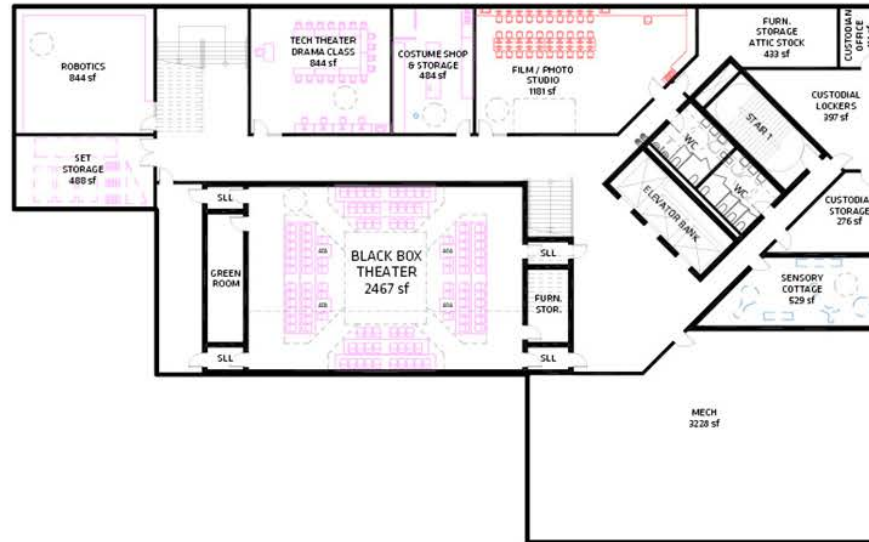


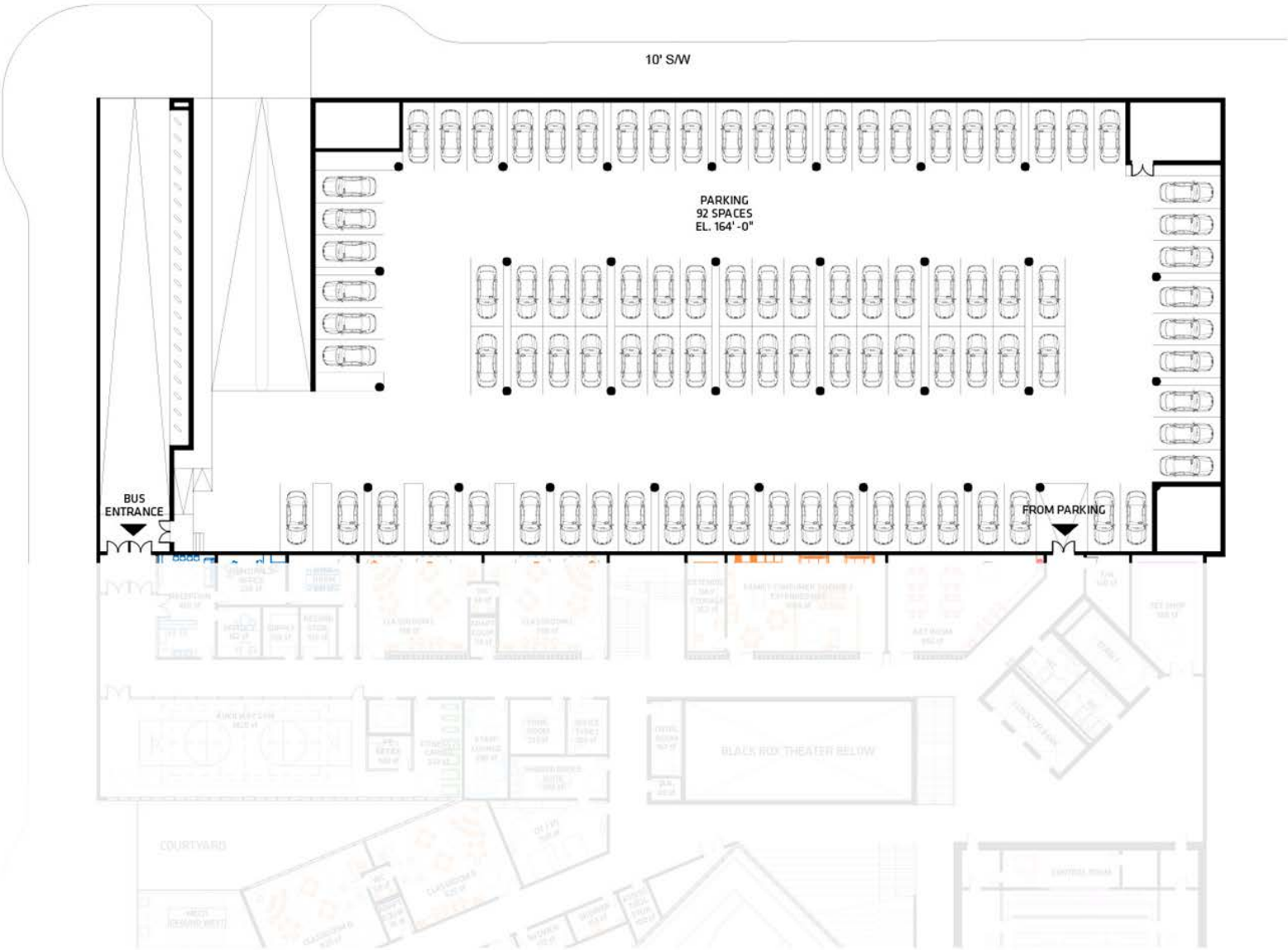




PLANS

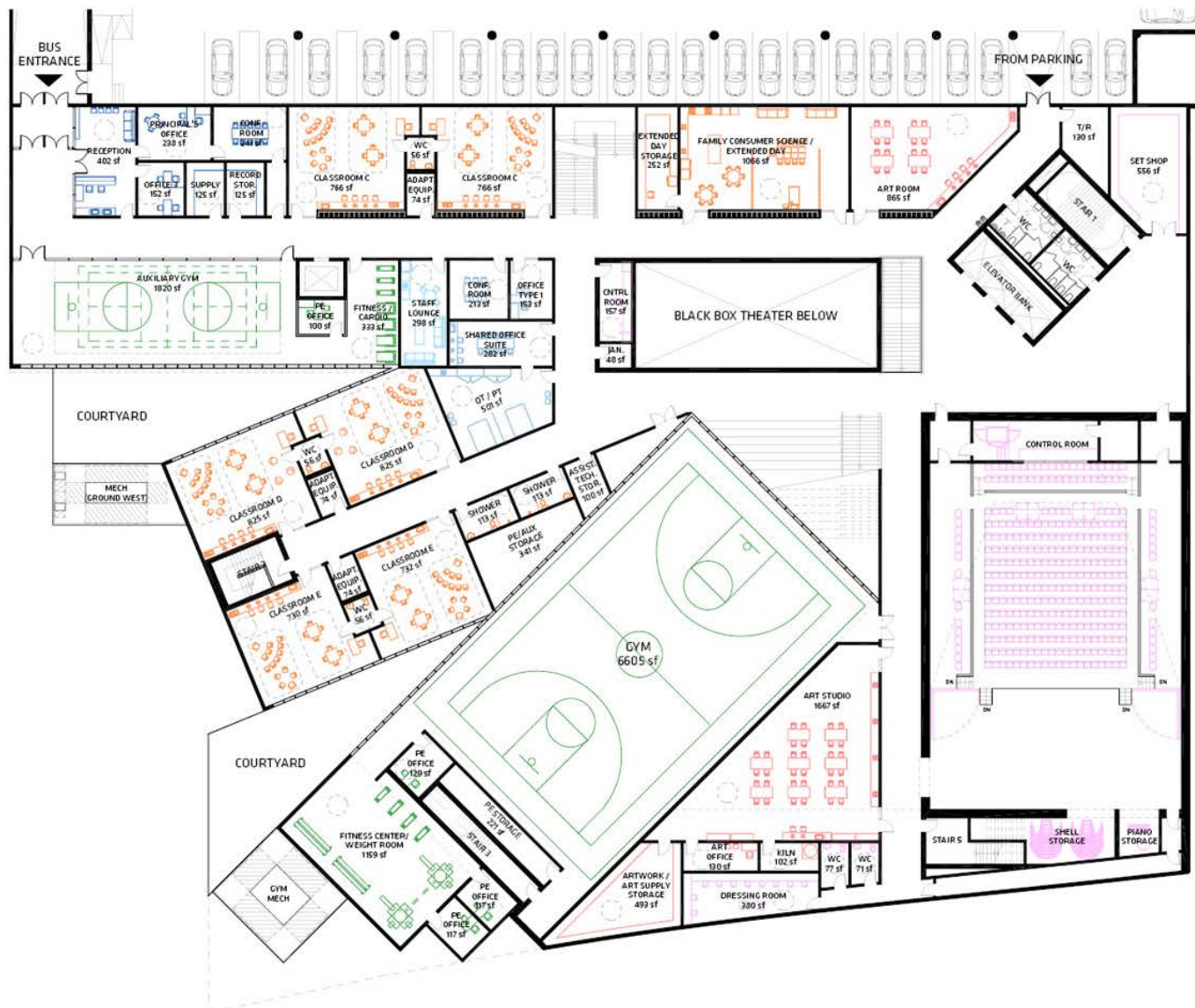


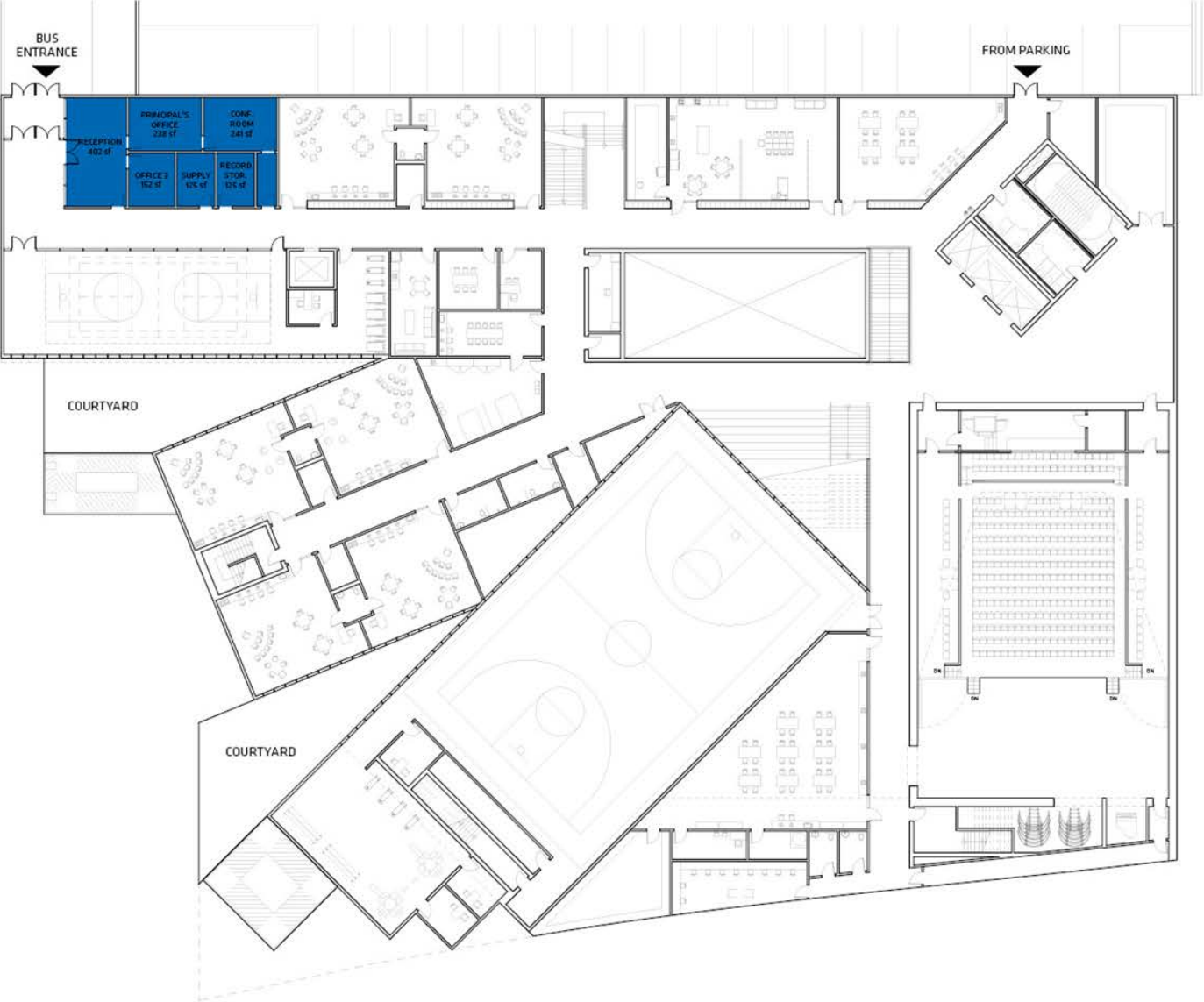
DESIGN OVERVIEW
PLANS

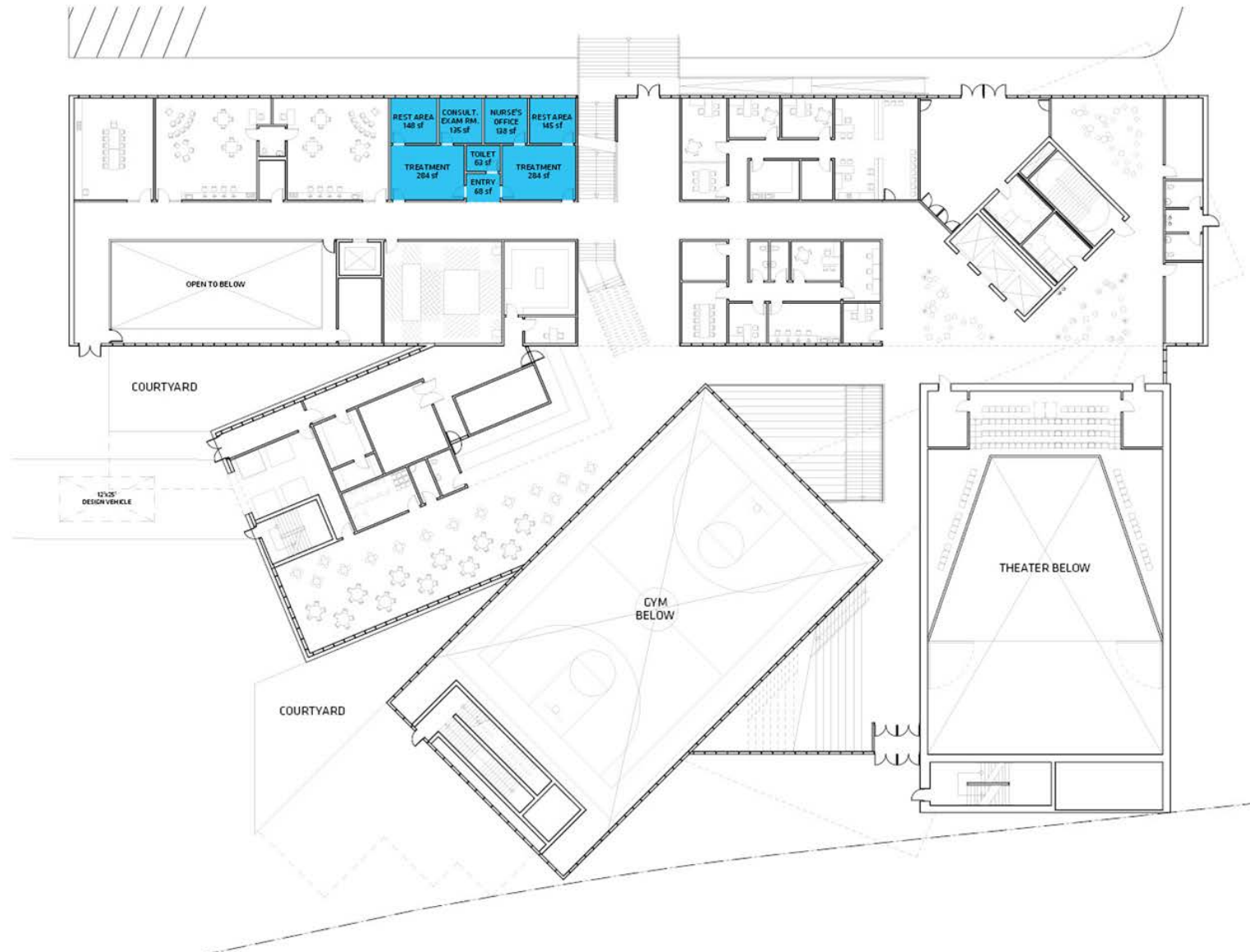


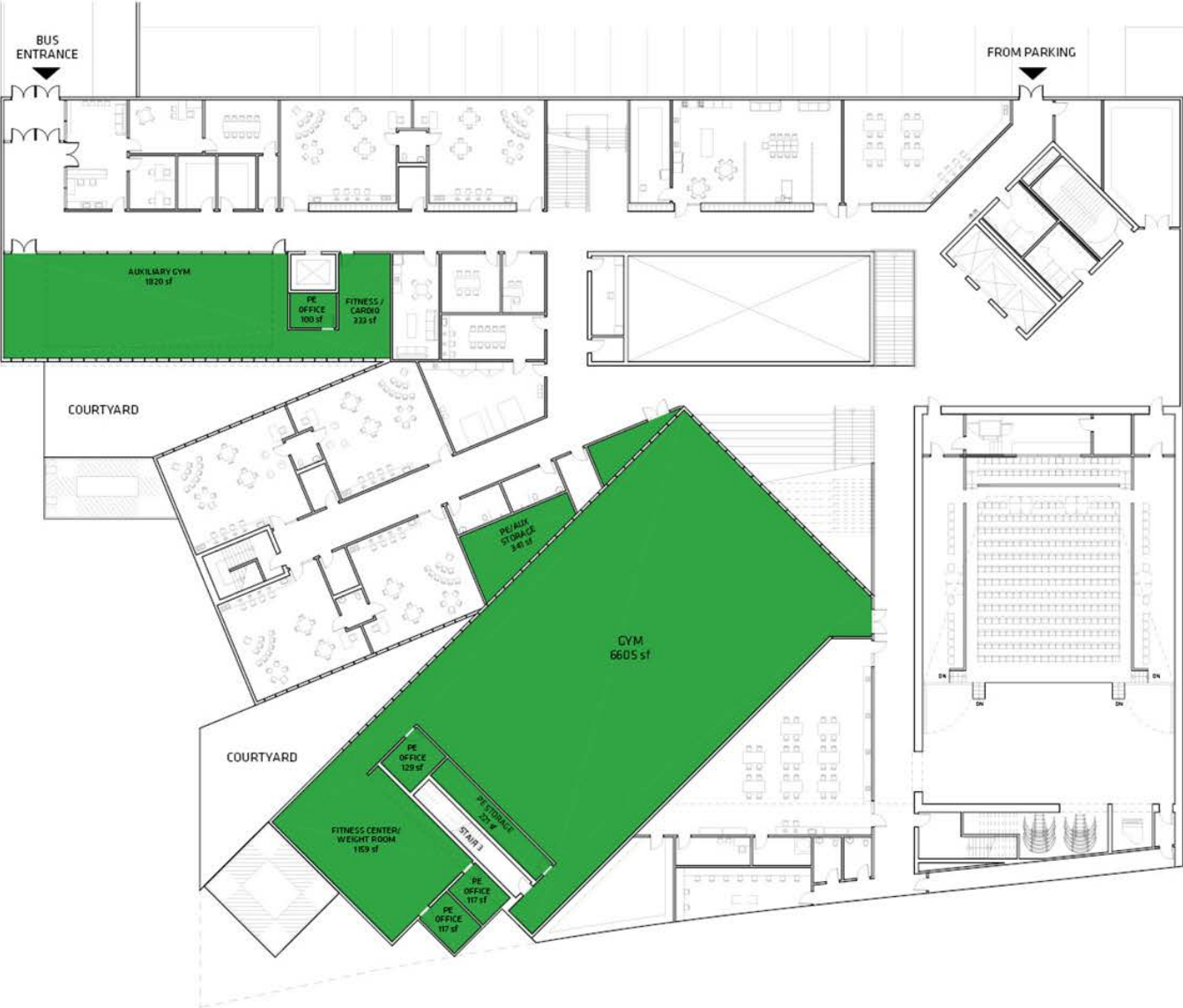
GROUND FLOOR PLAN

DESIGN OVERVIEW PLANS

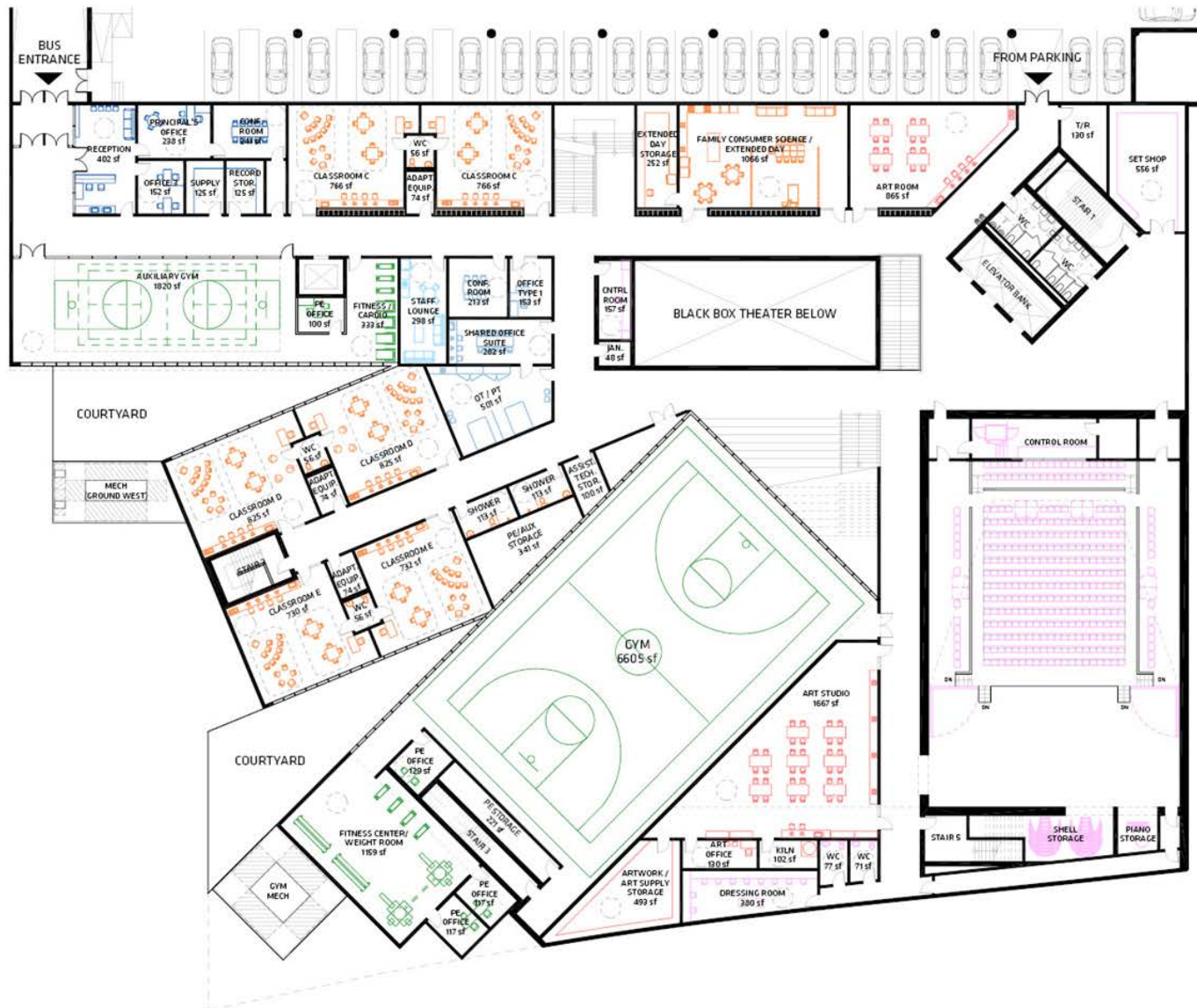






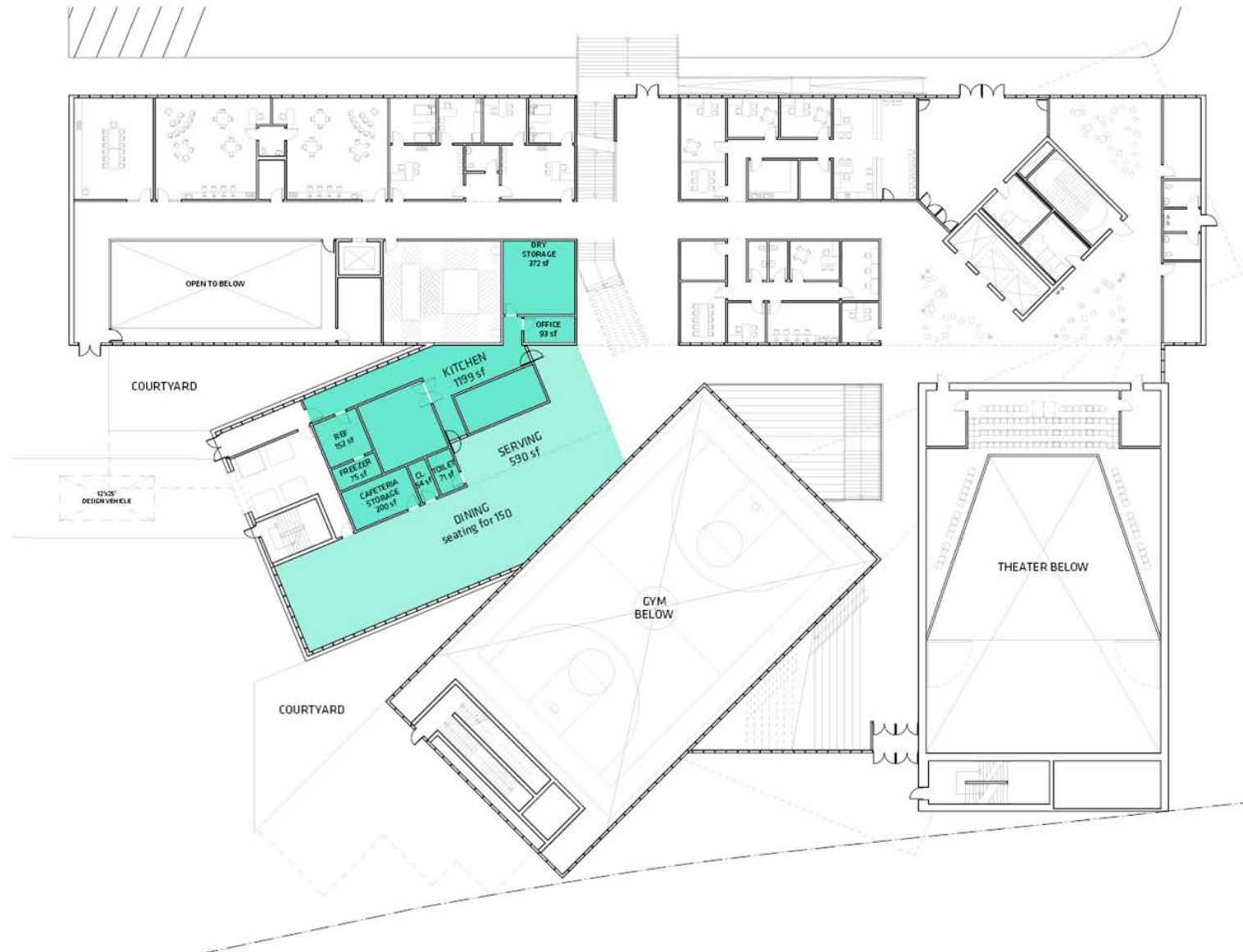


GROUND FLOOR PLAN

DESIGN OVERVIEW
PLANS















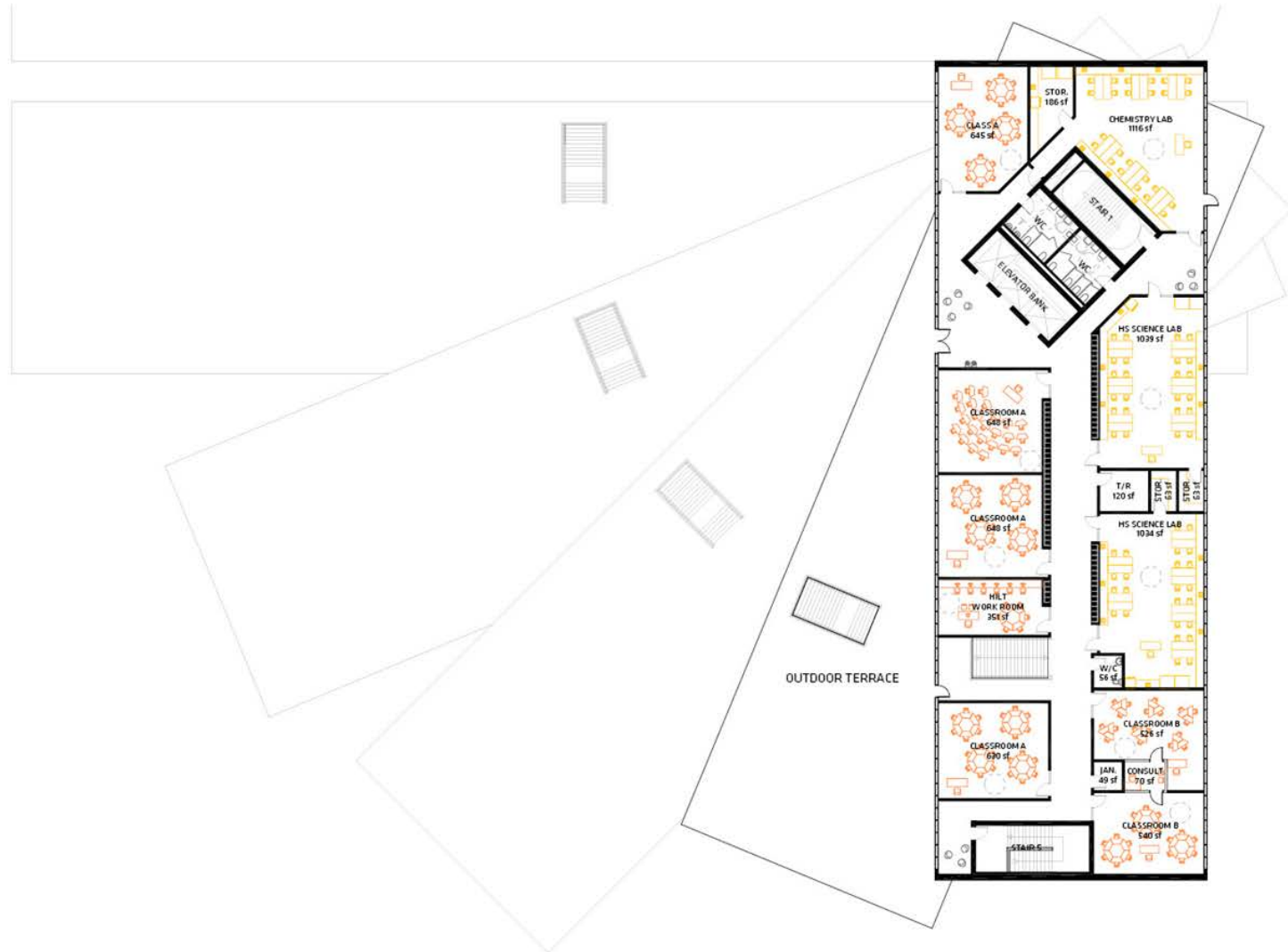




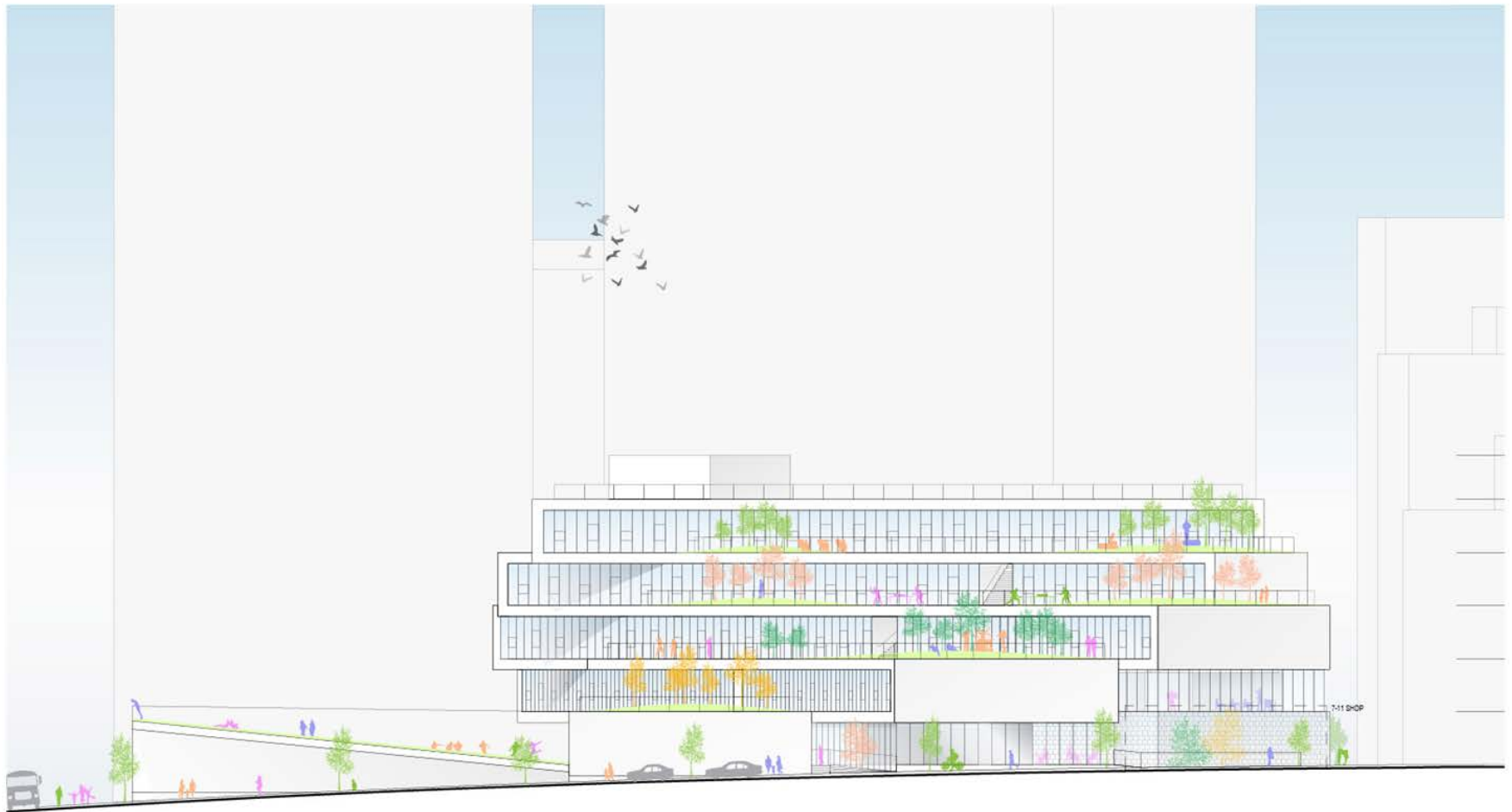
4TH FLOOR PLAN

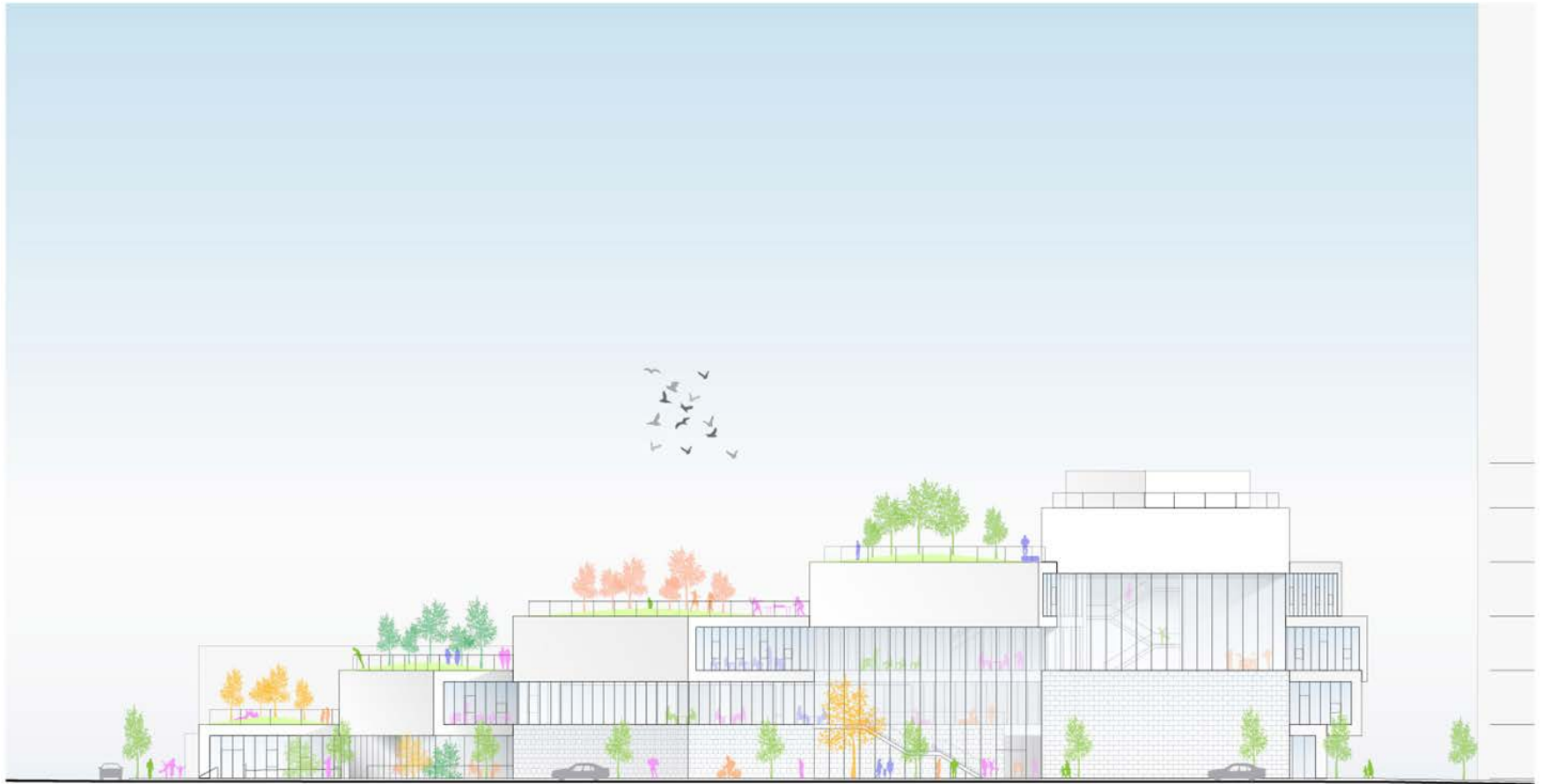
DESIGN OVERVIEW PLANS











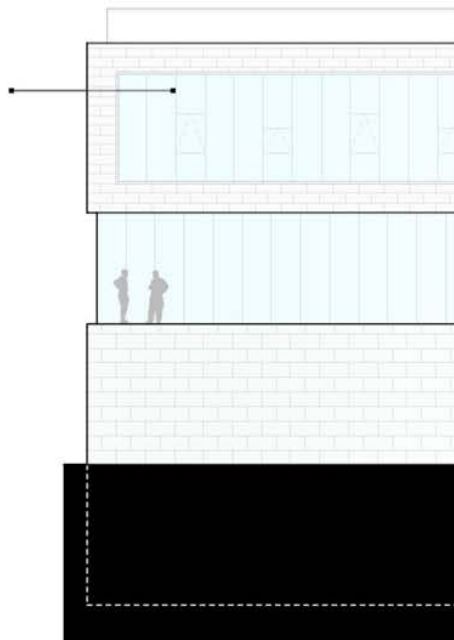
MATERIALITY CONCEPT



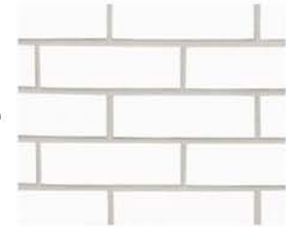
CLASSROOM BARS



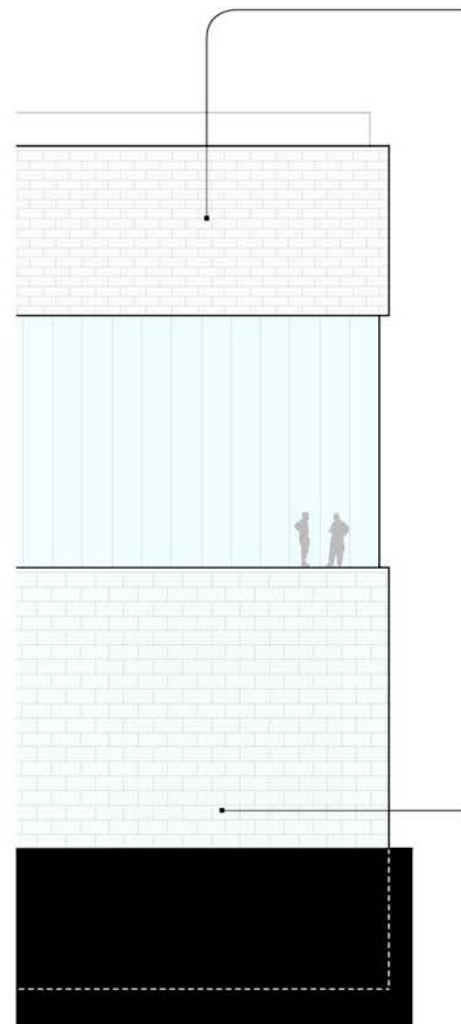
WOOD MULLIONS



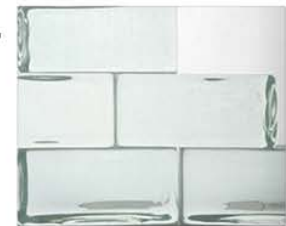
CLASSROOM BARS



WHITE GLAZED BRICKS



BIG BOX SPACES



GLAZED BRICKS

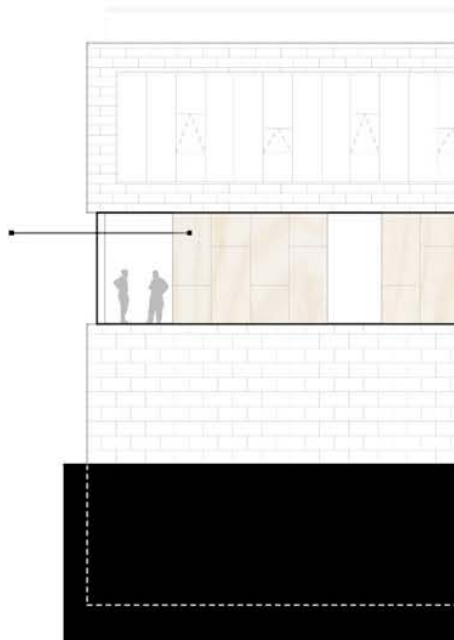
IN-BETWEEN SPACES



PLYWOOD/ WOOD PANELS



BOOK SHELVES



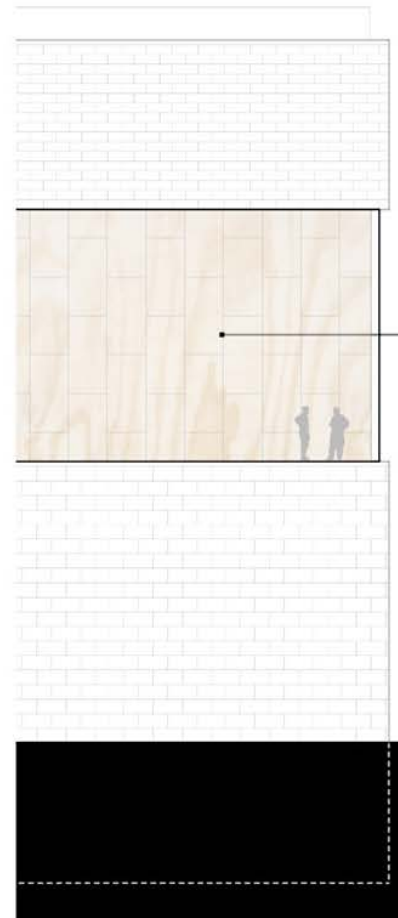
IN-BETWEEN SPACES



PLYWOOD/ WOOD PANELS



INSTRUMENT STORAGE



KEY EXTERIOR VIEWS







KEY INTERIOR VIEWS















...STUDIES THAT WILL CONTINUE INTO NEXT PHASE

