

WILSON SCHOOL

1601 Wilson Boulevard, Arlington, VA

Public Facilities Review Committee

May 11, 2016

LEO A DALY |  | BIG

UPDATE & SCHEDULE

**Schematic Design BLPC & PFRC Meetings**

Throughout the spring & winter we will meet with the BLPC & PFRC every few weeks to discuss relevant issues with the project and get feedback to guide the project forward. The hope is to get BLPC & PFRC approval of the Schematic Design by the end of May.

**School Board Information Briefing**

With approval from the BLPC we will present the schematic design to the School Board along with a Schematic Design Report. This report will include plan layouts, detailed narratives of building systems, and associated cost estimate.

**School Board Action Item**

It is the team's intent that the design and associated cost estimate will be approved at the June 16th School Board meeting. At this meeting the School Board will also provide direction in regards to the sustainability targets for the building

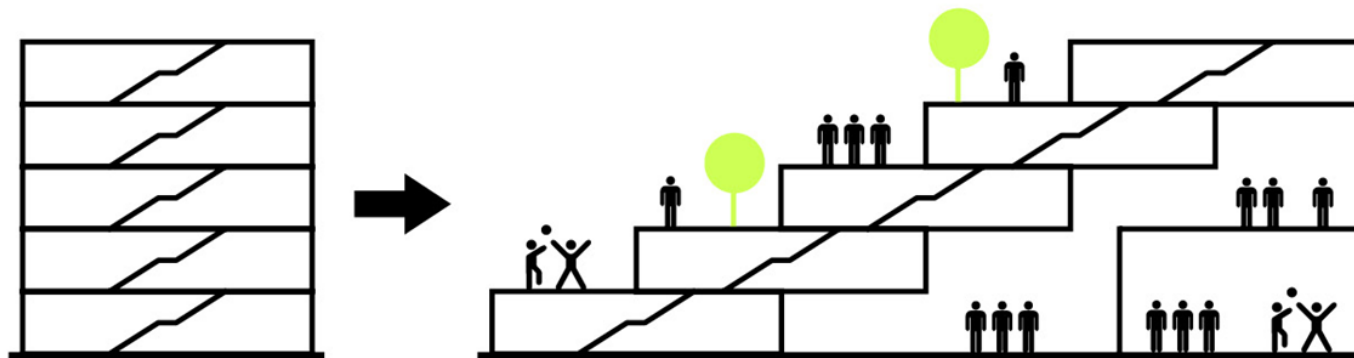
**Use Permit Submission**

The information developed in the Schematic Design phase will allow APS to submit to the county for a Use Permit.

**County Board Meeting/ Use Permit Approval**

Once the use permit is submitted, the County, APS and the design team will work through various issues related to the building that are relevant to the use permit. This process is culminated in a county board hearing where the use permit would be granted.

DESIGN OVERVIEW

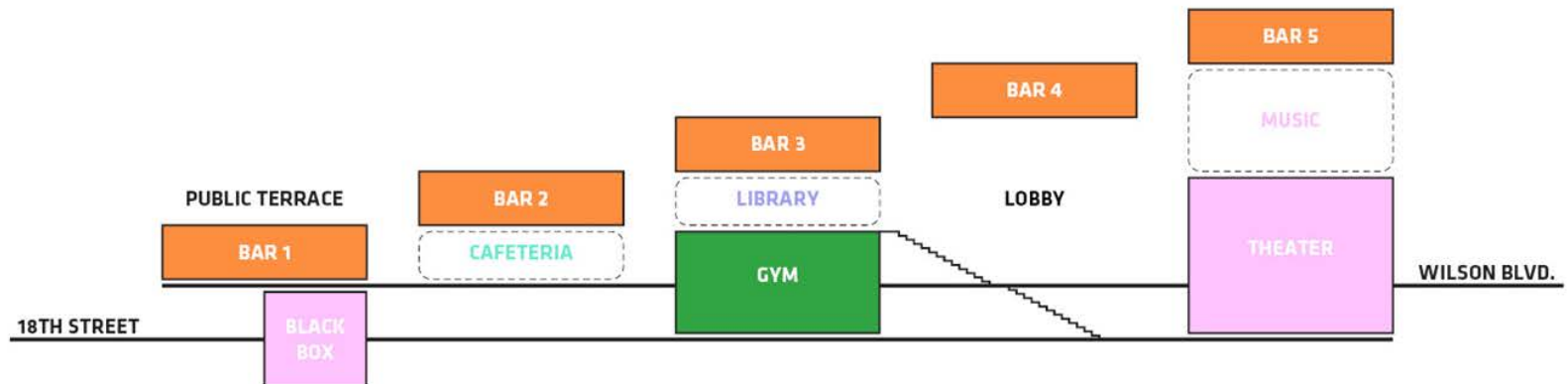


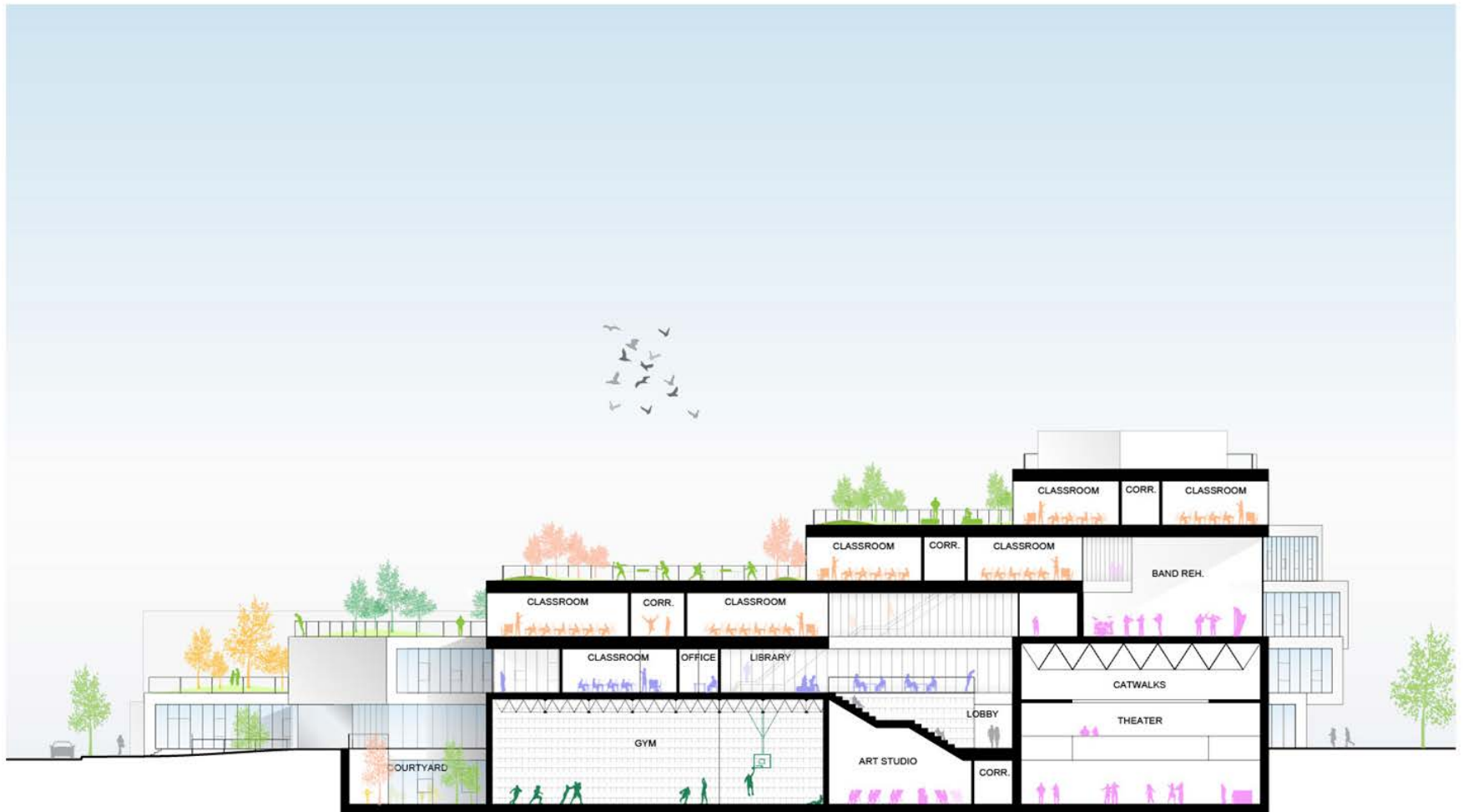
VERTICAL SCHOOL + COMMUNITY

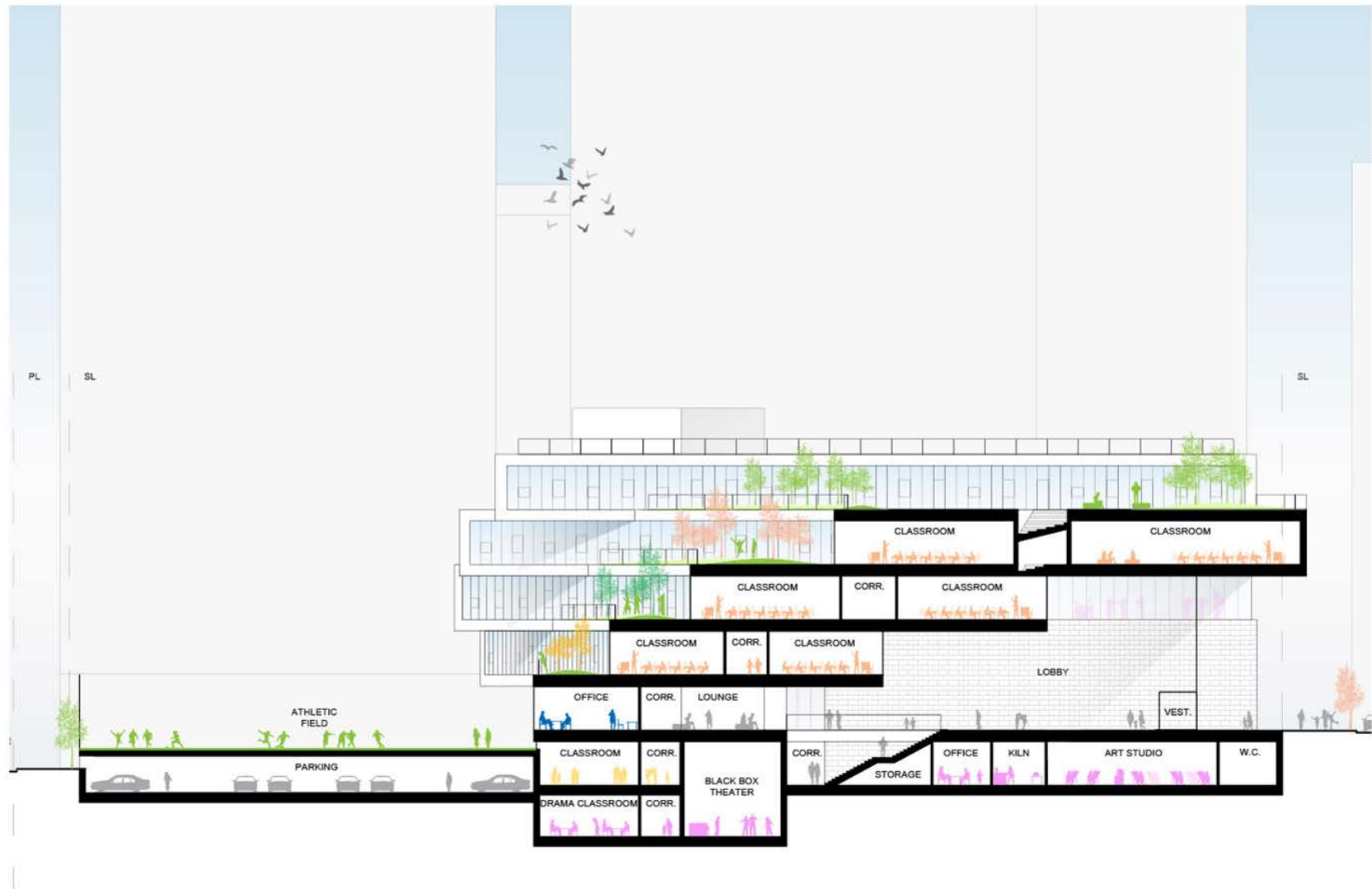
The small site requires that the project be designed across multiple levels. A key objective for the design was to maintain the feeling of a 1-story school building while still having a vertical school and the efficiencies afforded by it.

BUILDING ORGANIZATION



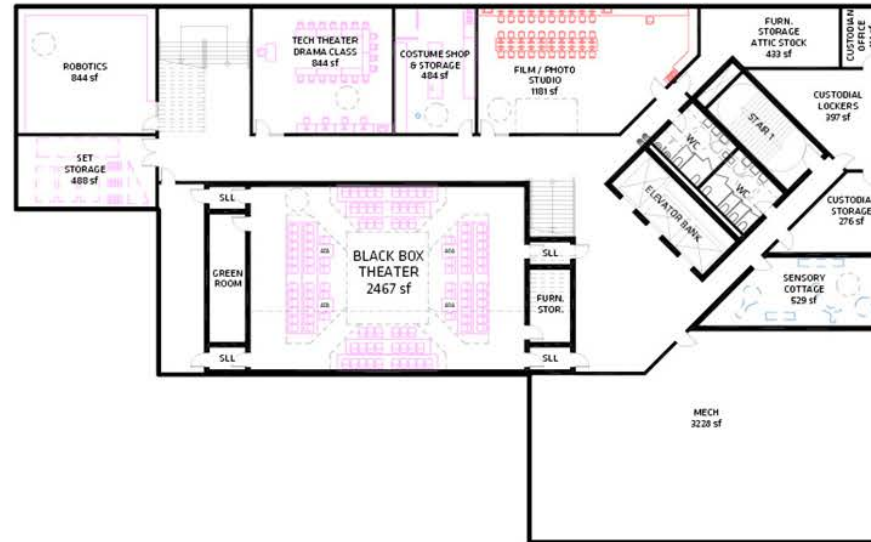


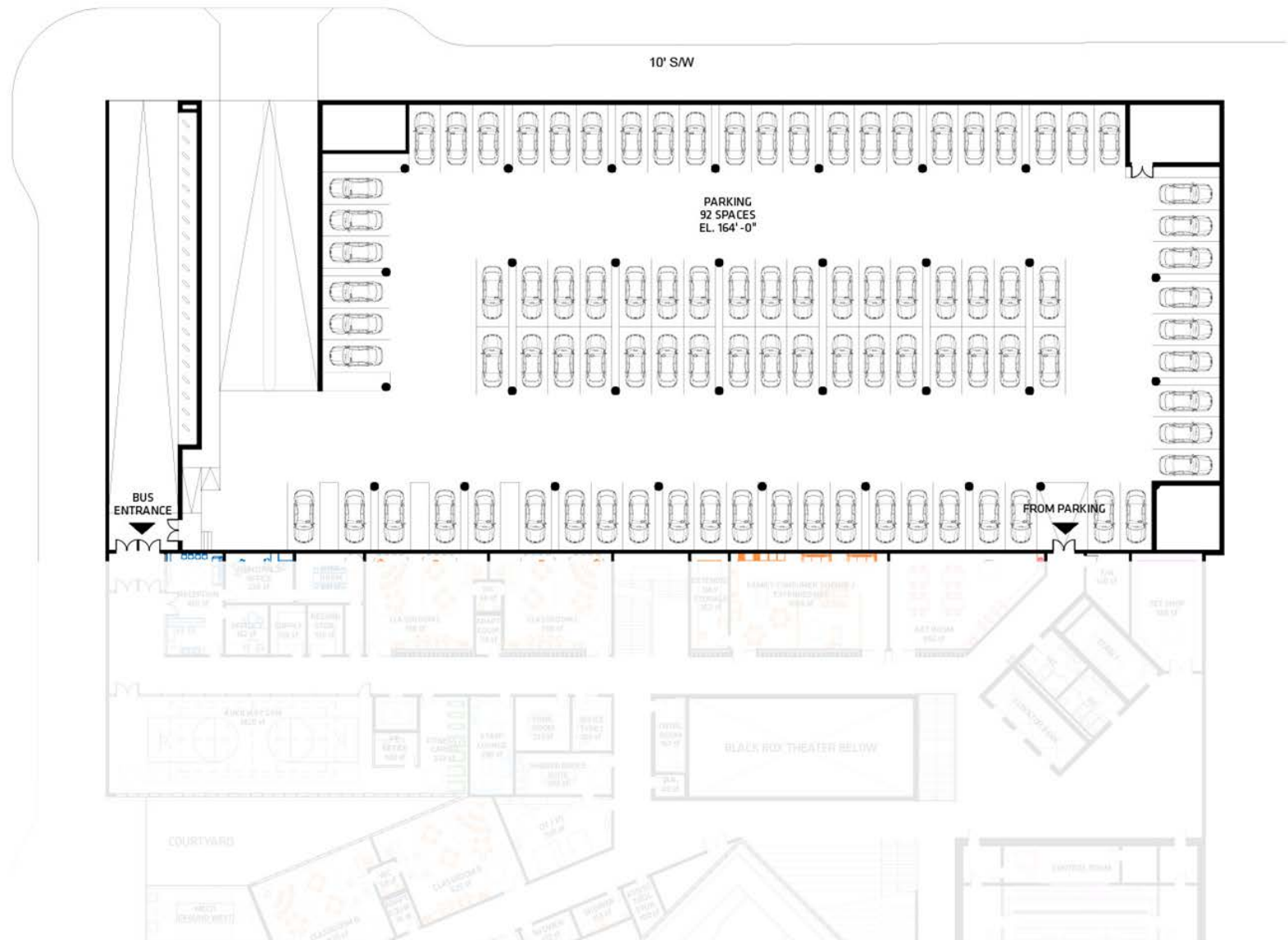




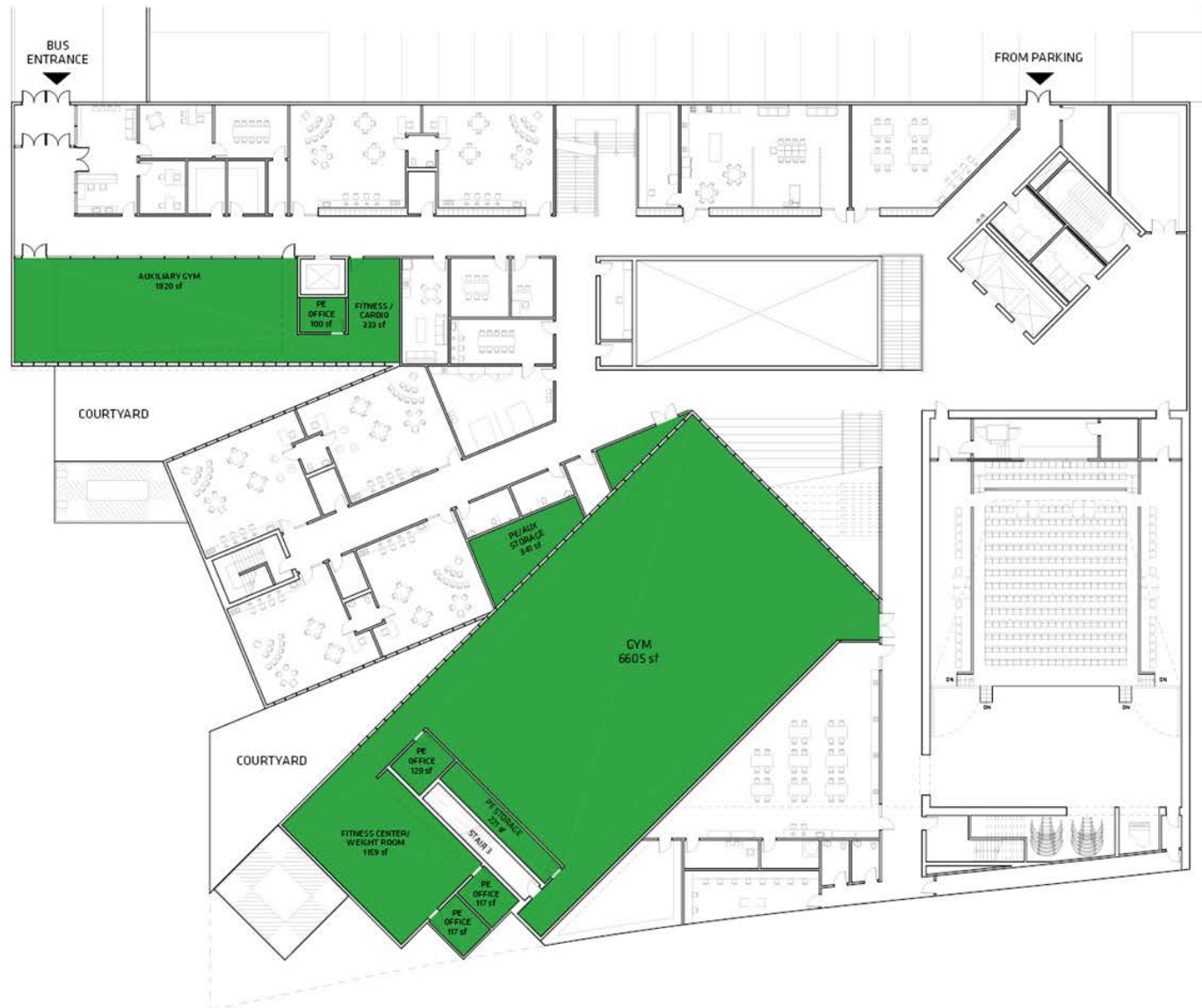
PLANS









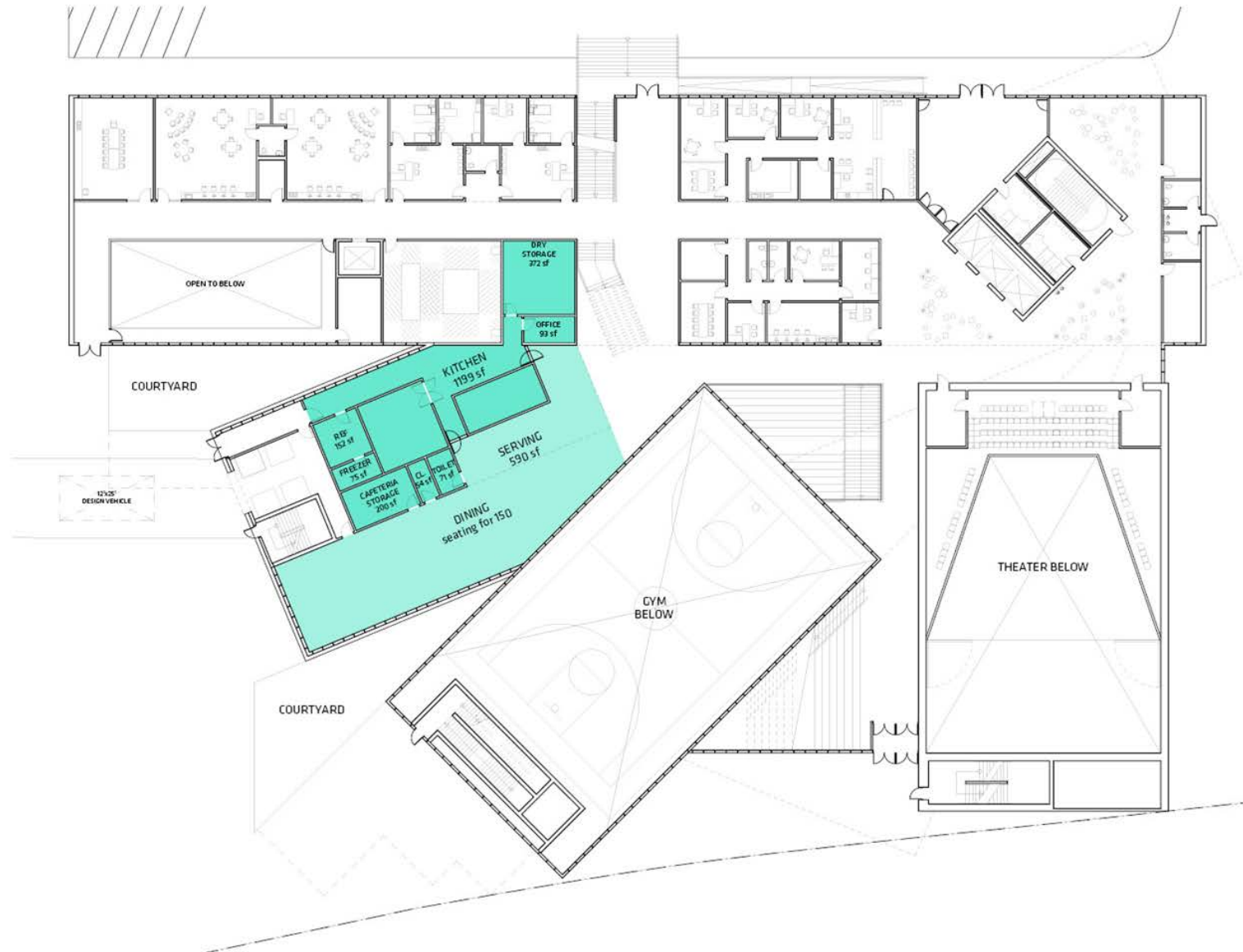


GROUND FLOOR PLAN

DESIGN OVERVIEW
PLANS





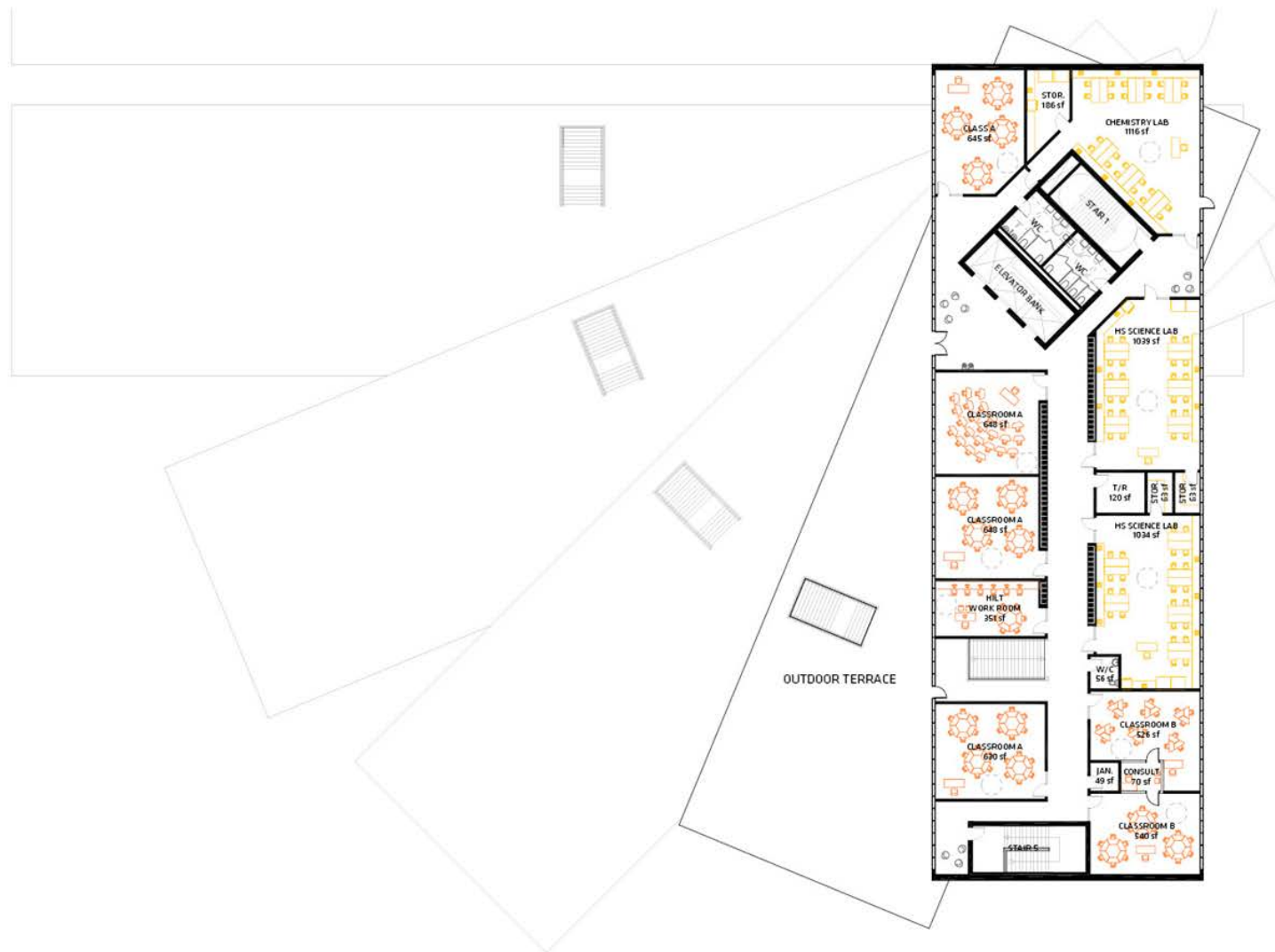










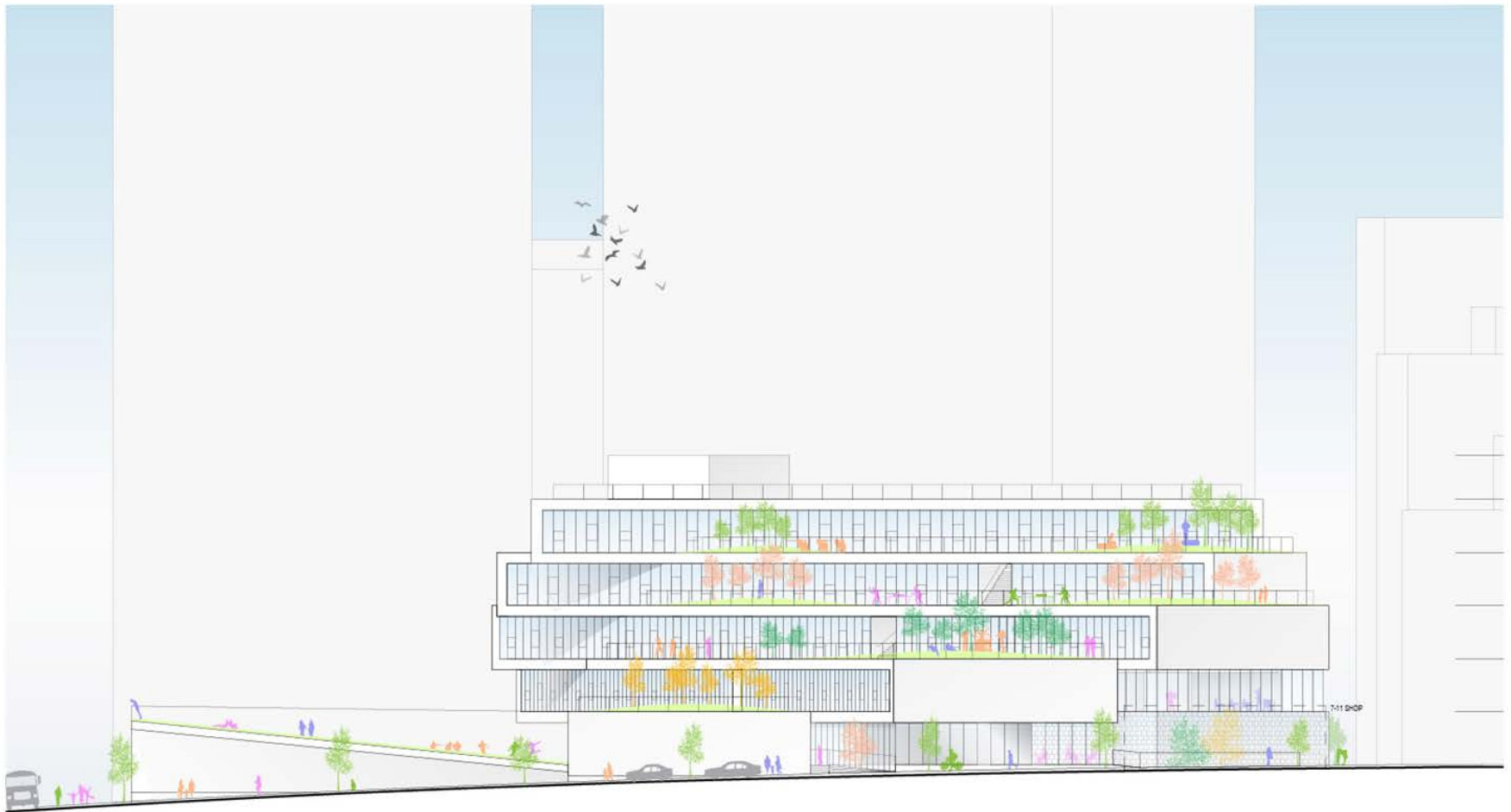


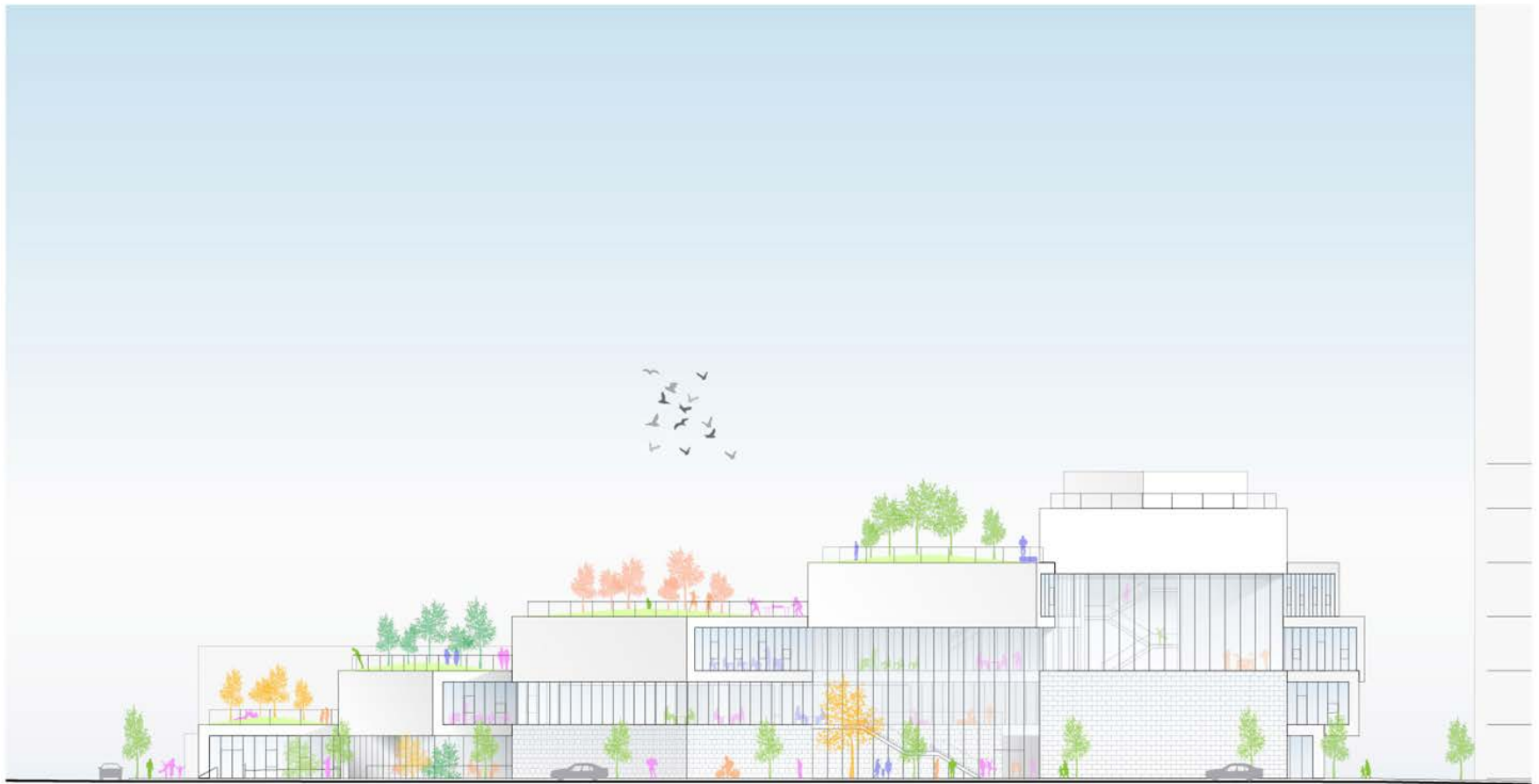
KEY INTERIOR VIEWS



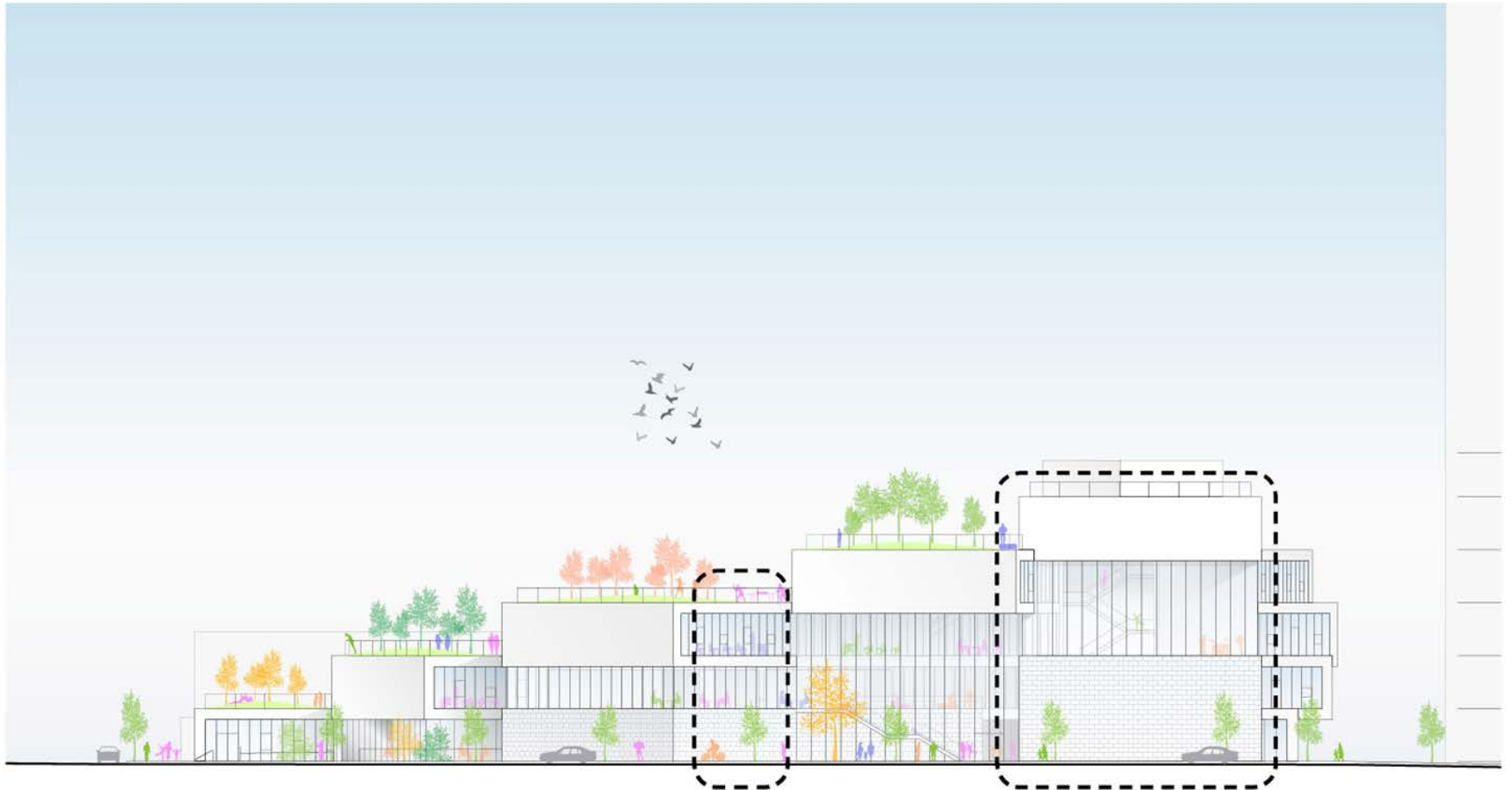








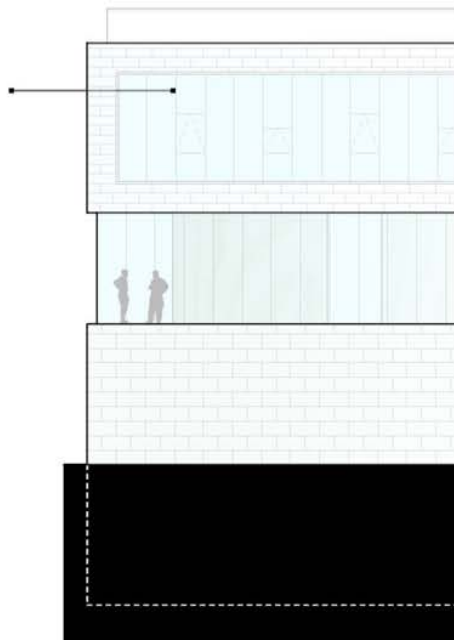
MATERIALITY CONCEPT



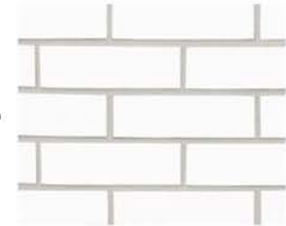
CLASSROOM BARS



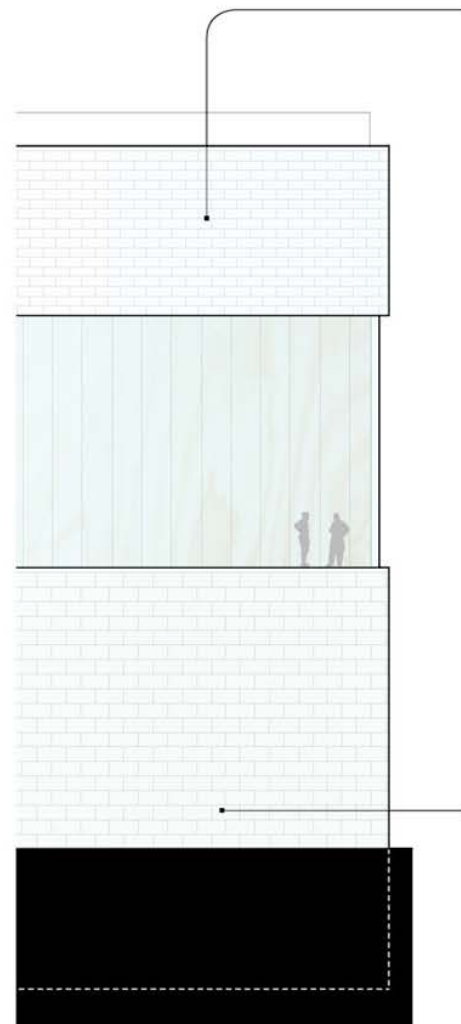
WOOD MULLIONS



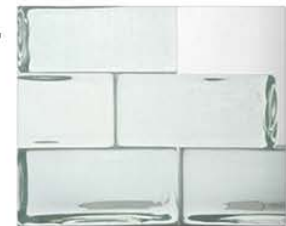
CLASSROOM BARS



WHITE GLAZED BRICKS



BIG BOX SPACES



GLAZED BRICKS

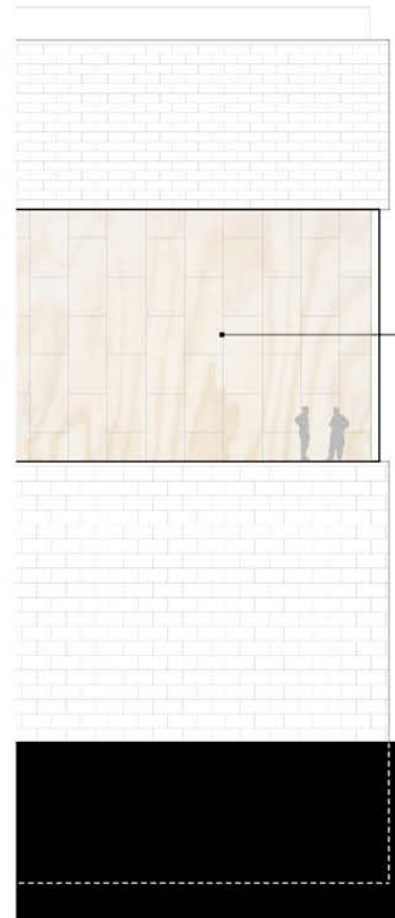
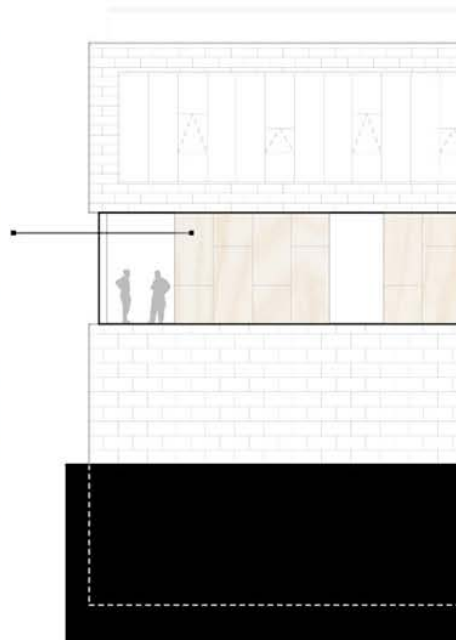
IN-BETWEEN SPACES



PLYWOOD/ WOOD PANELS



BOOK SHELVES



IN-BETWEEN SPACES



PLYWOOD/ WOOD PANELS



INSTRUMENT STORAGE

KEY EXTERIOR VIEWS

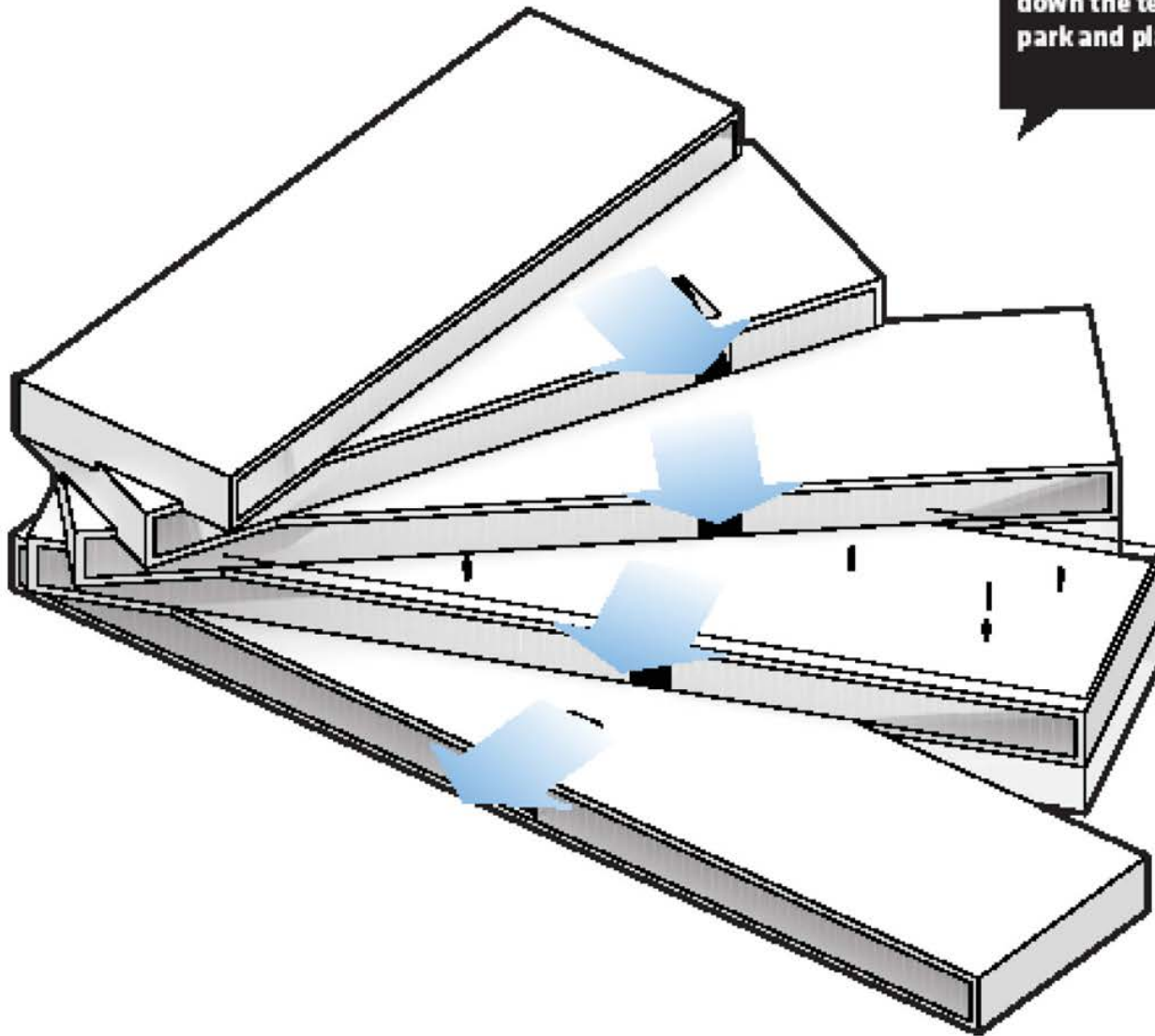




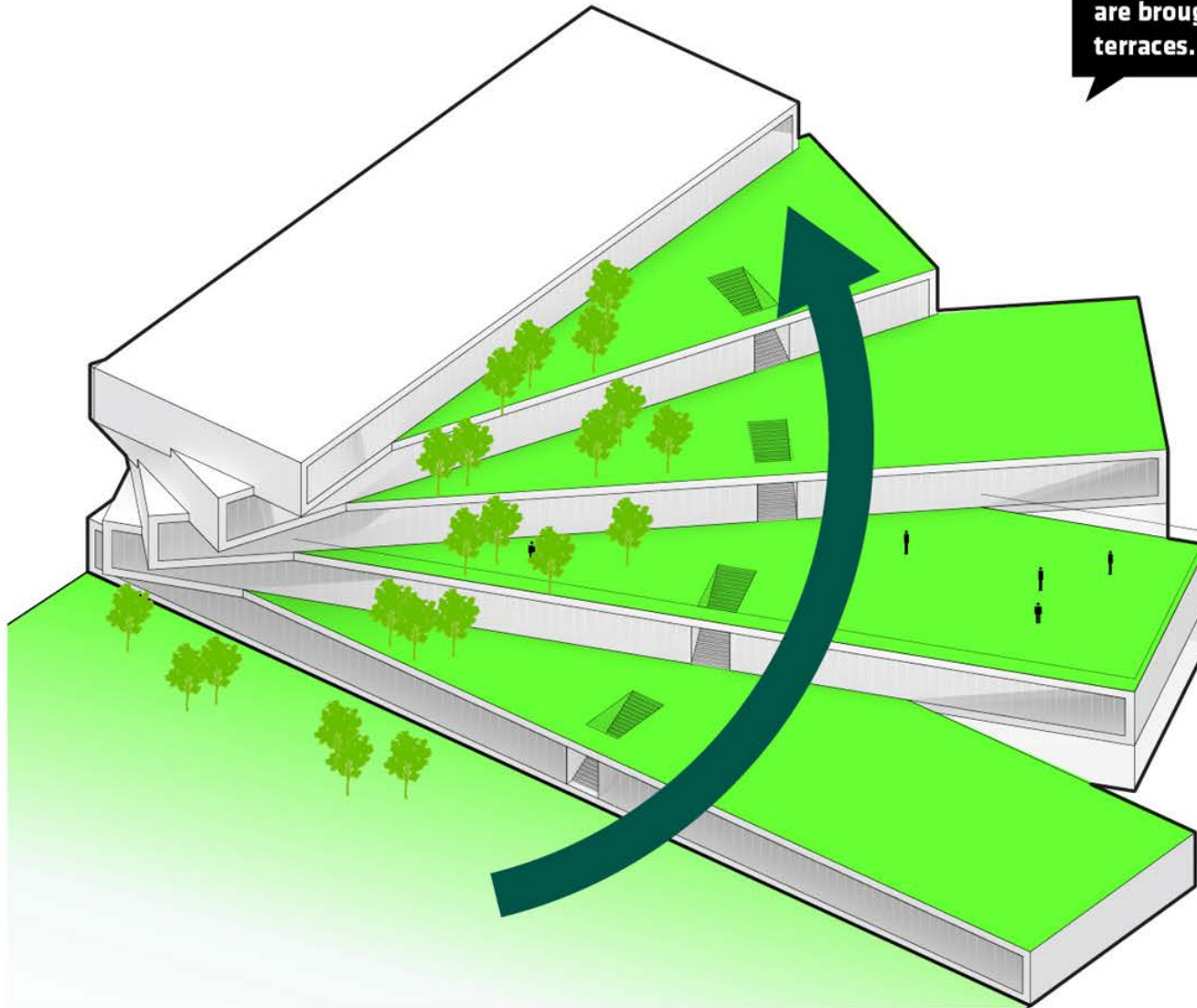


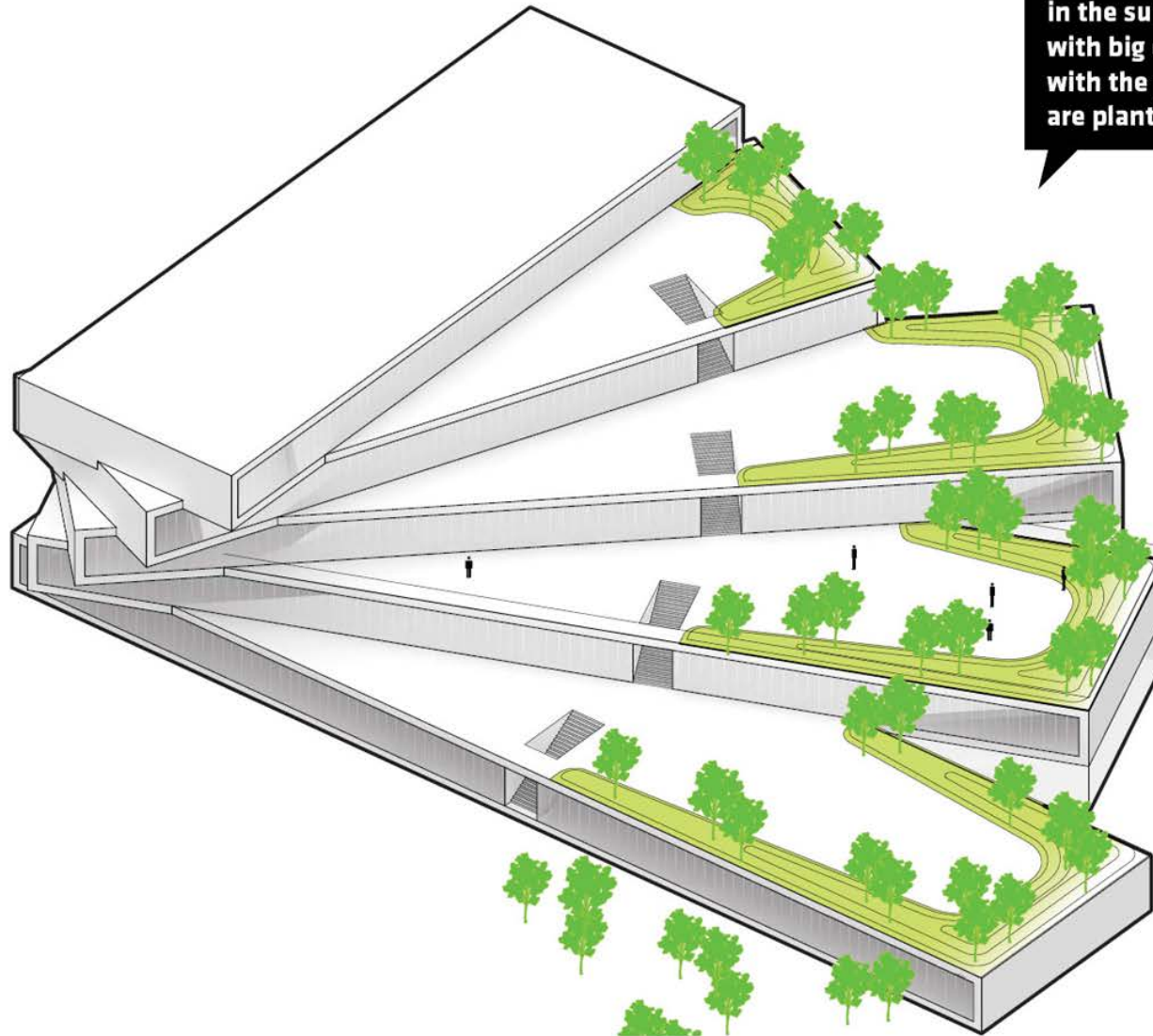
TERRACES

Preferred views are oriented back down the terraces towards the park and play fields



**The park and play fields
are brought up onto the
terraces...**





At a minimum, to provide shade in the sunniest areas, buffer edges with big drops, and create continuity with the park, the tips of the bars are planted with trees.

...making nature a backdrop
to the learning environment...

EDUCATION + NATURE + BIOPHILIA

The School sits in a rich diversity of landscapes, at the head of one of the most significant estuaries in the US

Maryland

Washington DC



Potomac River

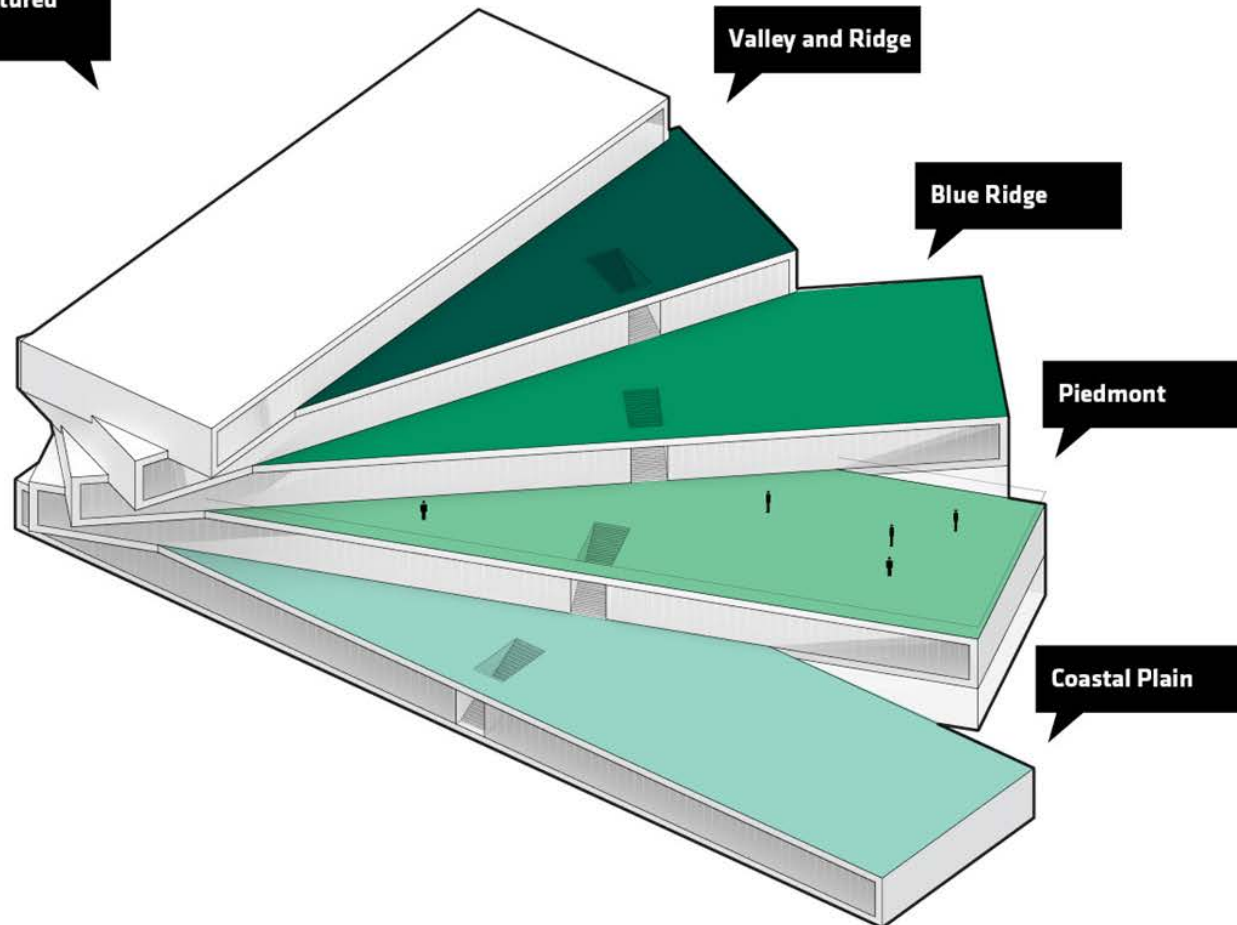
Chesapeake Bay

Virginia

- Valley and Ridge Region
- Blue Ridge
- Piedmont
- Coastal Plain

REGIONAL LANDSCAPE TYPOLOGIES

Following the same logic,
from high to low, the
terraces become captured
landscapes



CAPTURED LANDSCAPES



Red Maple



River Birch



Magnolia Merrill



Sumac



Ferns



Sedge



Farming



Coastal Grasses



Blue Ridge



Valley and Ridge



Piedmont



Coastal Plain



Granite - boulders and scree



Small Boulders



Mulch and Gravel



Alluvial Gravel

The Blue Ridge is home to a mature hardwood forest, with low understory, and granite & schist outcrops

The Valley & Ridge region is a mix of mature hardwood forest, with emergent species and more understory plants. Granite boulders and gravel are common.

The Piedmont is the agricultural heart of Virginia. Rich soil and a broad variety of native plants characterize the rolling landscape

The Coastal Plain Region is a regularly inundated flat area made up of sedimentation and coastal native grasses, trees and shrubs

REGIONAL LANDSCAPE TYPOLOGIES



PROPOSED COMMEMORATION

Design Ideas and Proposed Mitigation at Wilson School:

1. Consider a full-scale model or replica of the historic Wilson School under glass, to be placed in the lobby.
2. Create a full-size silhouette in steel of Wilson in his car, flat, no color.
3. Consider a solid brick or masonry pier at the pivot point of the new building.
4. Replicate some of the entrance details—columns, fanlight—at the main door.
5. Etch the historic Wilson School on glass façade or exterior panels.
6. Create the outline of the old building on the floor of the new and on the new façade to show the scale of the old v. the new.
7. Have a slideshow running in the lobby, have a copy of the letter from Mrs. Wilson's Secretary as part of display.
8. Create a community room that incorporates historic elements from the building—call it the “Wilson Room”. Similar to one of the Cathedral of Learning Classrooms.



Fort Myer Heights School under
construction, around
1909-10



ORIGINAL WILSON SCHOOL



EXPANDED WILSON SCHOOL



NEW BUILDING - 2019

