


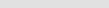
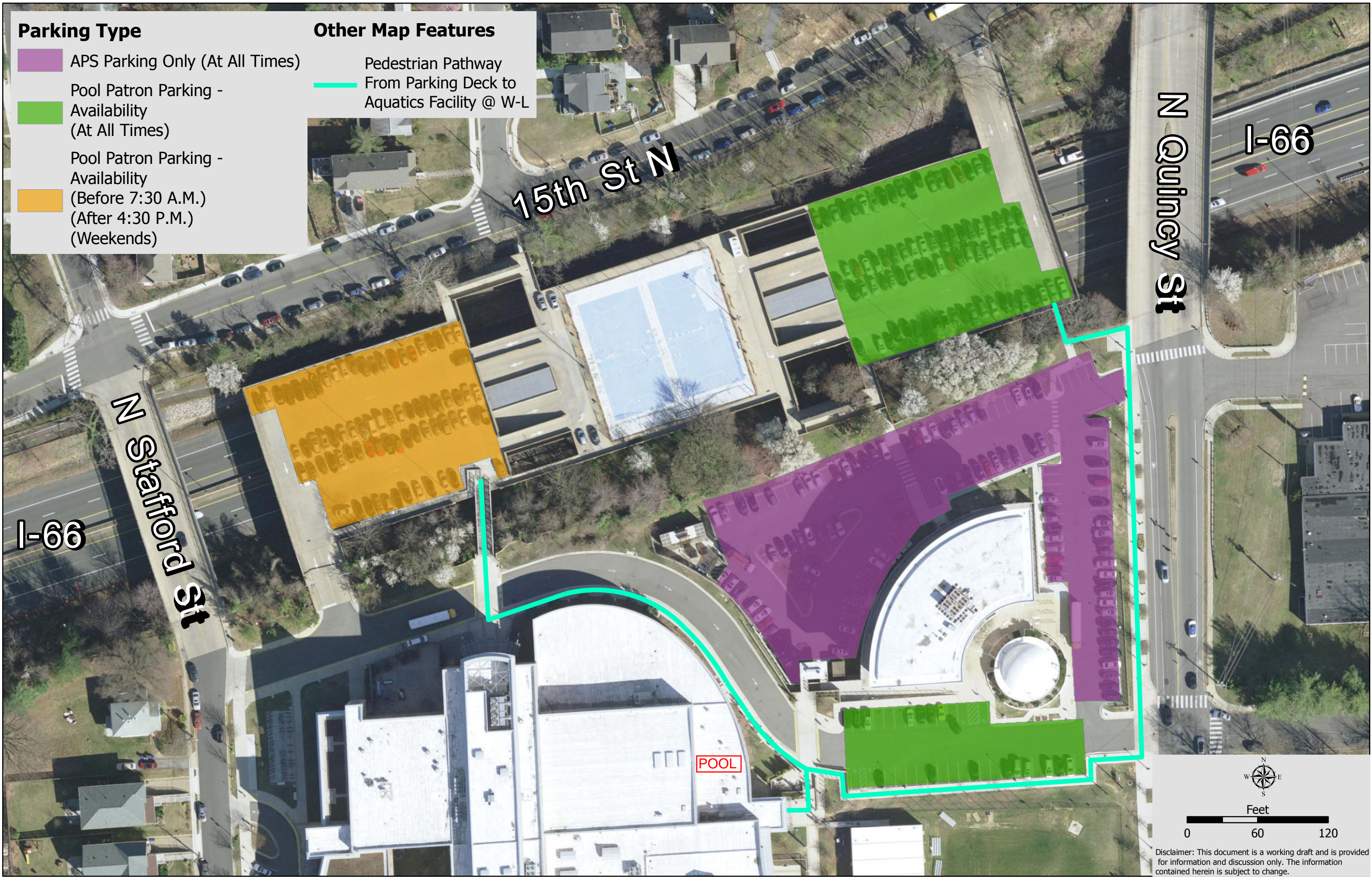


**Parking Type**

-  APS Parking Only (At All Times)
-  Pool Patron Parking - Availability (At All Times)
-  Pool Patron Parking - Availability (Before 7:30 A.M.) (After 4:30 P.M.) (Weekends)

**Other Map Features**

-  Pedestrian Pathway From Parking Deck to Aquatics Facility @ W-L



Feet



Disclaimer: This document is a working draft and is provided for information and discussion only. The information contained herein is subject to change.