



WINTER WEATHER PROCEDURES

School Year 2019-20



Arlington
Public
Schools

How Decisions Are Made

WE CONSIDER:

- Safety of students, staff and families
- Temperature, wind chill and snow/ice accumulation
- Safe bus operations and driver safety



FORECAST

The National Weather Service forecasts inclement weather.



COORDINATION

Schools and County coordinate response.



EVENING DECISION

announced by 6 p.m. if forecast will affect morning bus schedule.



4:30 A.M. REVIEW

Forecast and updates from the National Weather Service are reviewed.



COORDINATION

Schools and County coordinate response.



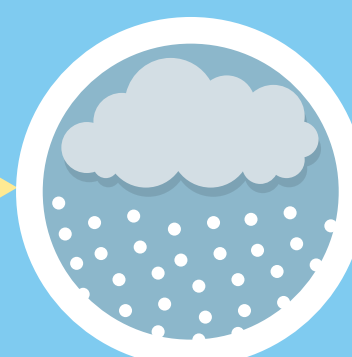
MORNING DECISION

Update or new decision, if any, communicated by 5 a.m.

When snow/ice starts during school hours

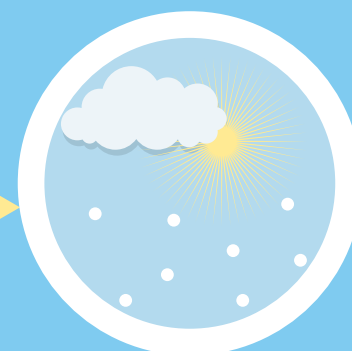


Snow or ice begins to fall or is forecasted to accumulate.



ACCUMULATION is expected to affect afternoon bus schedules.

Final decision for early dismissal is made by 11:30 a.m. and communicated via APS School Talk.



NO ACCUMULATION is expected in time for afternoon bus schedules.

School ends on time. Evening cancellations, if warranted, announced by 6 p.m. via APS School Talk.