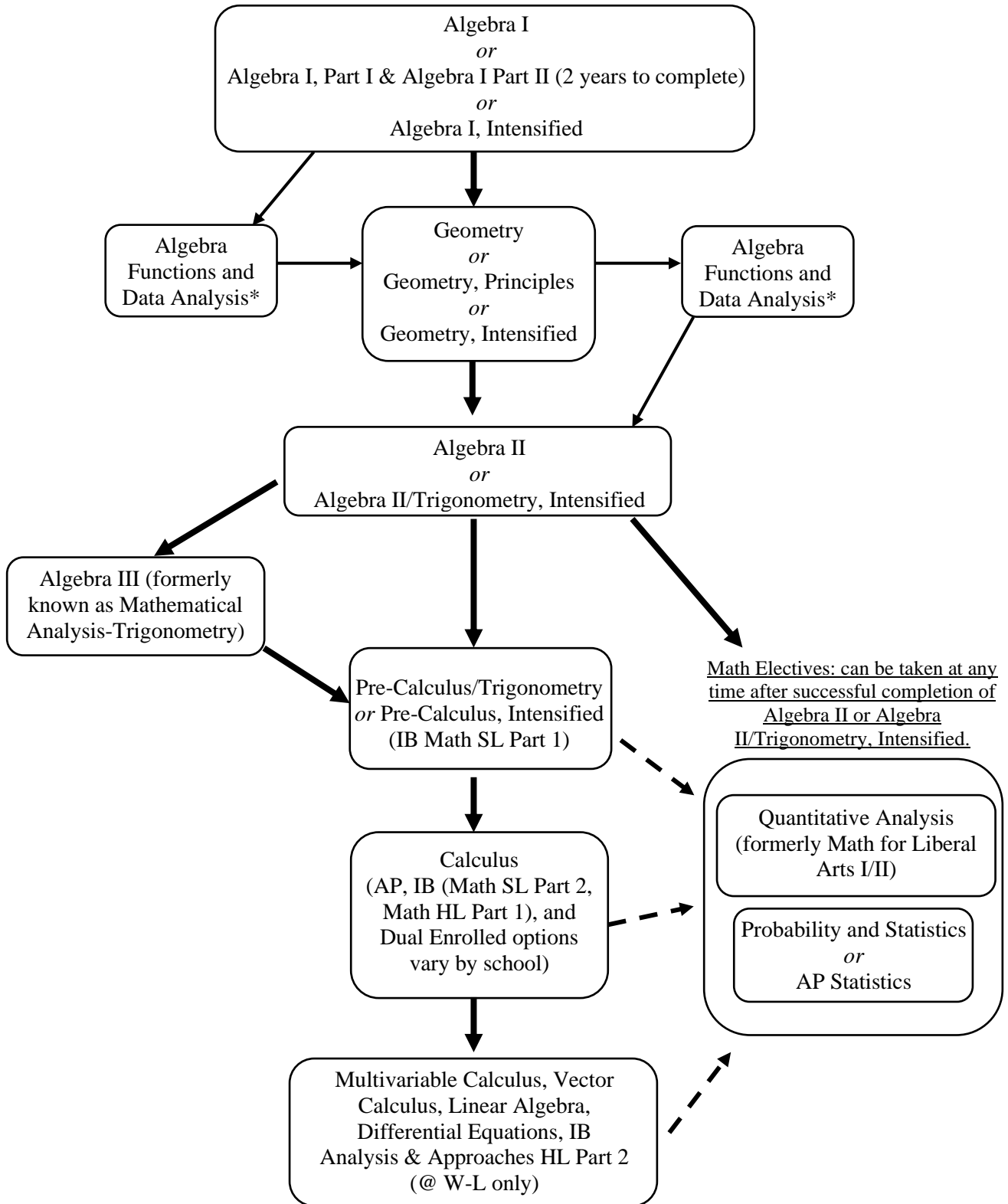


Arlington Public Schools' Math Course Pathways from Algebra I and above

Students will enter these pathways when enrolled in any Algebra I course (which will occur at different grade levels). There are multiple pathways and courses that students may take depending upon their readiness. Please see specific course descriptions for prerequisite requirements



For specific IB and Dual Enrolled courses not mentioned here, please see the index of courses offered at individual high schools. Students needing additional support may be concurrently enrolled in Algebra I, Geometry, or Algebra II and a Strategies course.

*AFDA may be taken after Algebra I and before Geometry OR after Geometry and before Algebra II in high school only.

HS Pathways options towards College Credit Courses based on Grade 8 Math Course

(for students who *are not* enrolled in Intensified Math Courses in Grade 9)

Grade 8	Grade 9	Grade 10	Grade 11	Grade 12
Pre-Algebra for 8 th Graders	Algebra I	Geometry	Algebra II	<i>Quantitative Analysis*</i> or <i>AP Statistics**</i>
Pre-Algebra for 8 th Graders	Algebra I (w/ Geometry NW in the Summer AFTER 9 th grade)	Algebra II	Pre-Calculus/ Trigonometry***	<i>AP Calculus AB</i> or <i>Quantitative Analysis</i> or <i>AP Statistics</i>
Algebra I (or Algebra I, Intensified with a C or lower)	Geometry	Algebra II	Pre-Calculus/ Trigonometry***	<i>AP Calculus AB</i> or <i>Quantitative Analysis</i> or <i>AP Statistics</i>
Algebra I (or Algebra I, Intensified with a C or lower)	Geometry	Algebra II	Algebra III	<i>Quantitative Analysis*</i> or <i>AP Statistics</i>
Intensified Geometry (with a C or lower)	Algebra II	Pre-Calculus/ Trigonometry***	<i>AP Calculus AB</i> or <i>AP Statistics</i>	<i>AP Calculus BC</i> or <i>AP Statistics</i>

*To enroll in Quantitative Analysis, students must meet placement criteria. This is a Dual Enrolled course with NVCC thus grades will go on a NVCC transcript

** To enroll in AP Statistics following Algebra II, students must earn a B or higher in Algebra II

*** To enroll in Pre-Calculus/Trigonometry after Algebra II, students must earn an A or higher in Algebra II and have a teacher recommendation

(for students who *are* enrolled in Intensified Math Courses in Grade 9)

Grade 8	Grade 9	Grade 10	Grade 11	Grade 12
Algebra I, Intensified	Geometry, Intensified	Algebra II/ Trigonometry, Intensified	Pre-Calculus, Intensified	<i>AP Calculus BC</i> or <i>AP Calculus AB</i> or <i>AP Statistics</i>
Geometry, Intensified	Algebra II/ Trigonometry, Intensified	Pre-Calculus, Intensified	<i>AP Calculus BC</i>	<i>Multivariable Calculus</i> or <i>Vector Calculus & Linear Algebra</i> or <i>AP Statistics</i>
Geometry, Intensified	Algebra II/ Trigonometry, Intensified	Pre-Calculus, Intensified	<i>AP Calculus AB</i> or <i>AP Statistics</i>	<i>AP Calculus BC</i> or <i>AP Statistics</i>