

ACTC

9/22/20



Arlington Public Schools



Use Permit TDM Revisions

- Use Permit 101
- Why the changes?
- Main areas of revision
 - Short set vs long set
 - Streamlining role of Site Transportation Coordinator
 - Include Bike Parking management role in Transportation Management Plan (TMP)
 - Standardize benefit availability across modes
 - Tie benefit budget to School Board approved budget
 - Performance monitoring





Next Steps

Road show:

- Joint Committee on Transportation Choices (JCTC) 9/25
- Transportation Commission 10/1
- APS Facilities Adv. Committee (FAC) 10/19

Board application – October 2020

Board Hearing – December 2020

Begin Implementation & Template development





Return to School Planning

- Two Joint APS-County Working Groups
 - Walk & Bike Access
 - Park & Walk Access
- Each group meets once per week; Joint meeting on Fridays
- Includes:
 - APS: Transportation & Facilities Planning, SRTS, Bus Transportation
 - County: DES – DOT & WSS; DPR; ACPD
- Developed Transportation Profiles for ea school





Walk & Bike Access Work Group

- Expanded 16 walk zones (3 permanent); 13 'emergency'
- Review challenging intersections
- Ten need crossing support: four ACPD; 6 DES or CERT
- Conducted walk audits
 - Identified Priority needs and Dept. leads for action
 - Mapping comfort routes
- Inventoried bike racks → Rackspotter
- Developing walking school bus and bike train materials
- BAC & PAC on-board to assist as needed





Park & Walk Work Group

- Inventoried available parking at 28 locations
- Developing maintenance of traffic (MOT) plans for each site; includes:
 - Identify on-street areas to block and add space for students to queue
 - Reviewing traffic flows
 - Identify areas that may need traffic management support
- Meeting with individual school to identify entry doors: bus vs other arrival modes; discuss communications; understand staff parking needs



Sample Parking Inventory Map

Long Branch Elementary

Approximate Spaces Needed: 38

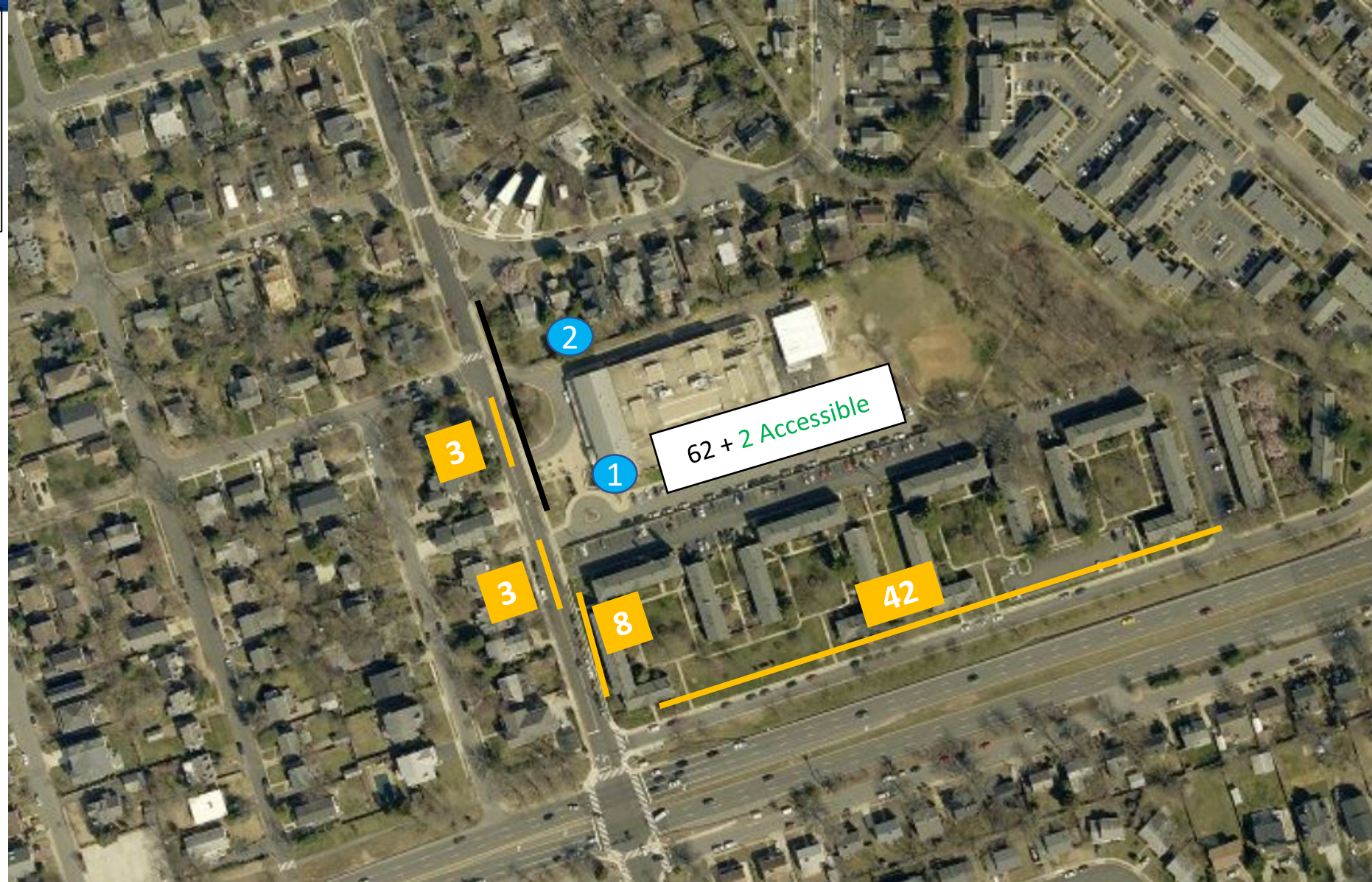
Approximate Spaces Available: 56+

— Signed for School Hours
(FIRE LANE NO PKG)

— Unrestricted Parking

Parking Lot (Likely for Staff)

① Door and #





Bus Transportation

- Assisting with Food Service delivery (10 non-APS locations)
- Currently transporting small number of students to out of county day programs (specialized routes)
- Drivers not currently on a route are assisting in other APS areas





Bus Transportation

General Education route planning:

- Working with Consultant to run scenarios for General Ed routes
- Appx 11,500 students to be routed in two groups (Tu/W and Th/F)
- Parameters include:
 - 11 students per bus
 - Max Ride time
 - Earliest pick-up time
 - Est. screening time/student
 - Arrival time at school (how long before start time)
 - Existing start time
- Findings from two scenarios run to-date



Bus Transportation

Special Education routes:

- Planning for return of some special education students (per health indicators)
 - 1st group would include students in need of significant assistance with accessing virtual learning
 - 2nd group would include all special education students
- Still in planning stages; working through details
- May require multiple routings
- Transportation will need to understand scope (#s and locations) of students returning before any routing can occur