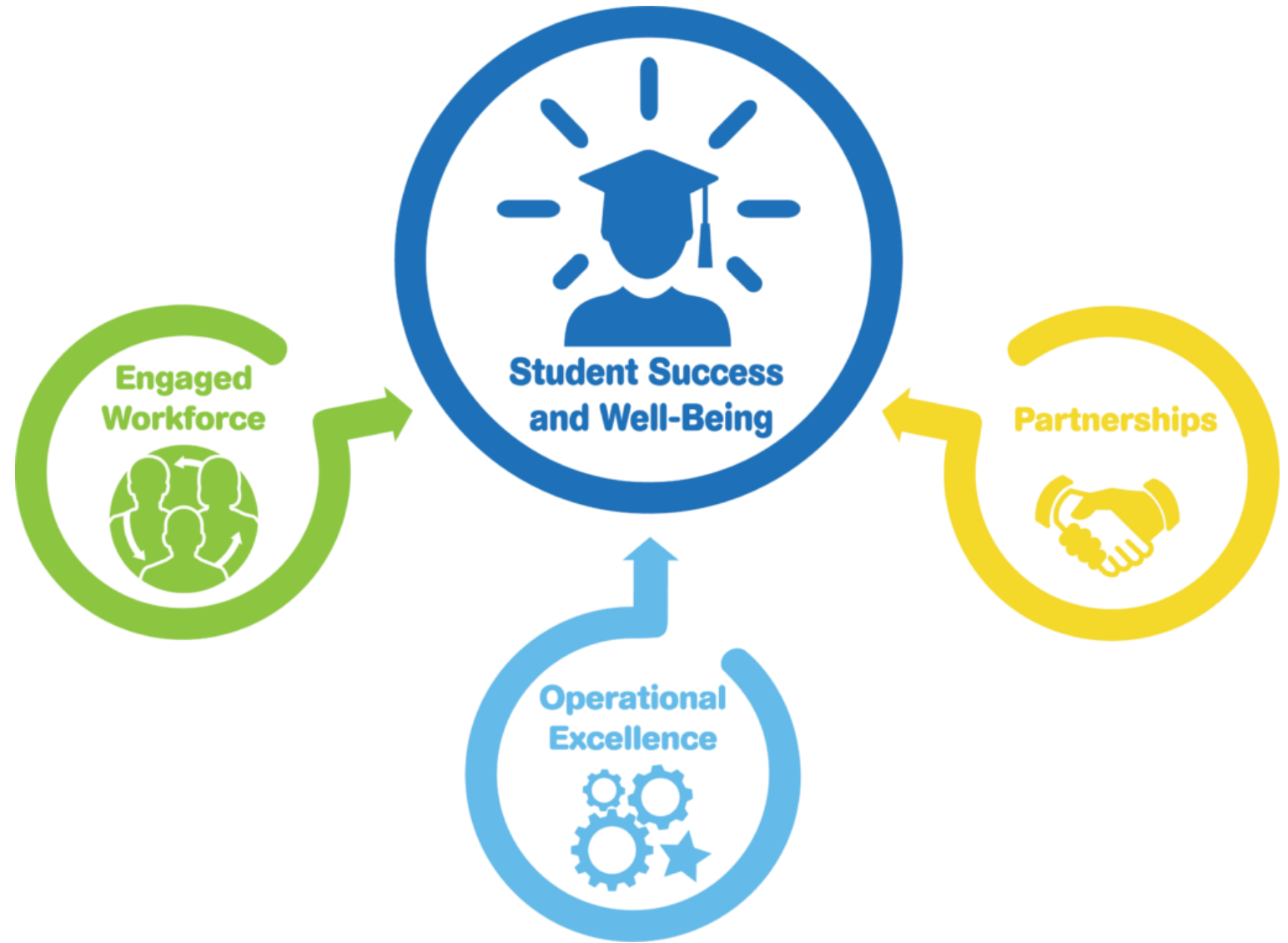


School Bell Times Study Technical Advisory Team (TAT)

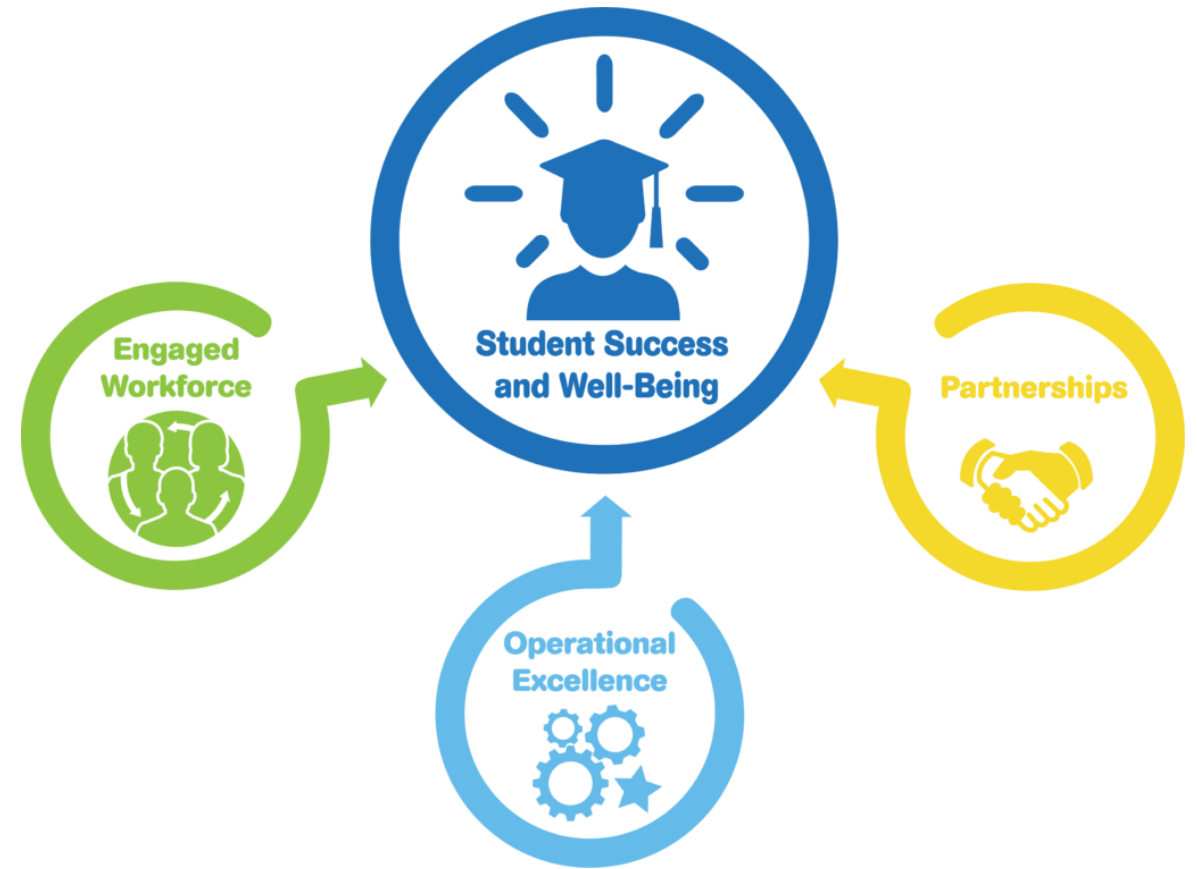
Session I

Scenario overview and
discussion



Transpar Team

Bell Review





TRANSPAR

Arlington Public Schools
Internal Stakeholder Session #1
Bell Time Scenario Review



**Arlington
Public
Schools**

March 7, 2022

SUMMARY SERVICE RULES, CONSTRAINTS AND PERFORMANCE MEASURES

Summary of Service Rules and Constraints To-Date

- Eligibility
 - ES = 1 mile
 - MS & HS = 1.5 miles
 - Students with transportation dictated by an IEP
- Preferred ride times
 - 30 minutes for neighborhood schools
 - 60 minutes for countywide programs
 - Special education routes vary in length based on student needs and program locations anywhere from 15 – 60 minutes
- Earliest drop-off times at campuses
 - 15 minutes prior to instructional bell
- Extracurricular/athletics considerations:
 - Field trips operate between 9:30 AM – 1:30 PM
 - Athletic trips need to depart ~3:30 PM to align with VHSL scheduling

SUMMARY SERVICE RULES, CONSTRAINTS AND PERFORMANCE MEASURES

Summary of Service Rules and Constraints To-Date

- Current instructional lengths of day and bell times continued
 - MS/HS Specialty School – 9:25 AM – 4:10 PM: 6 hours and 45 minutes
 - SpEd Program (@MS/HS specialty school site) – 9:24 AM – 4:06 PM: 6 hours and 42 minutes
 - Career Center/Tech – 8:00 AM – 3:10 PM: 7 hours and 10 minutes

Primary Preferences and Challenges to Navigate

- Standardizing/reducing eight bell schedules down to fewer, three, if possible
- Least amount of disruption to current schedules
- Maintaining 30-minute ride times for neighborhood schools; 60 minutes max
- Avoiding elementary students being picked up in the dark
- Peak traffic congestion between 7:30 – 8:30 AM
- Infrastructure congestion with bus and parent traffic; shared bus loops
- Where possible, limiting dependence on cabs and contractors

CURRENT BELL SCHEDULE

APS Bell Schedule

6 AM	7 AM	8 AM	9 AM					2 PM	3 PM	4 PM	5 PM
		7:50		Middle Schools	6	6:34		2:24			
		8:00		Abingdon, Campbell, Carlin Springs ES	3	6:41		2:41			
		8:00		Career Center	1	7:10			3:10		
		8:15		New Directions	1	6:35		2:50			
		8:19		High Schools	4	6:42			3:01		
		8:25		Barrett, Long Branch, ATS, Randolph ES	4	6:41			3:06		
			9:00	All Other Elementary Schools	18	6:41				3:41	
			9:24	Shriver	1	6:46					4:06
			9:24	H-B Woodlawn	1	6:46					4:06

SCENARIO OVERVIEW

Scenario One:

- MS: 7:50 AM - 2:34 PM
- ES Group 1: 8:00 AM - 2:51 PM

- New Directions: 8:15 AM – 3:00 PM
- Career Center: 8:19 AM – 3:39 PM
- HS: 8:19 AM - 3:11 PM
- ES Group 2: 8:25 AM - 3:16 PM

- ES Group 3: 9:00 AM - 3:51 PM
- Shriver: 9:24 AM – 4:16 PM
- HB Woodlawn: 9:24 AM - 4:16 PM

Scenario Three:

- ES Group 1: 7:30 AM - 2:21 PM
- MS: 7:40 AM - 2:24 PM

- New Directions: 8:15 AM – 3:00 PM
- Career Center: 8:35 AM - 3:55 PM
- HS: 8:40 AM - 3:32 PM
- ES Group 2: 8:40 AM - 3:31 PM

- Shriver: 9:24 AM – 4:16 PM
- ES Group 3: 9:20 AM - 4:11 PM
- HB Woodlawn: 9:24 AM - 4:16 PM

Scenario Two:

- MS: 7:30 AM - 2:14 PM
- ES Group 1: 7:30 AM - 2:21 PM

- New Directions: 8:15 AM – 3:00 PM
- Career Center: 8:15 AM - 3:35 PM
- HS: 8:19 AM - 3:11 PM
- ES Group 2: 8:19 AM - 3:10 PM

- Shriver: 9:24 AM – 4:16 PM
- ES Group 3: 9:24 AM - 4:15 PM
- HB Woodlawn: 9:24 AM - 4:16 PM

Scenario Four:

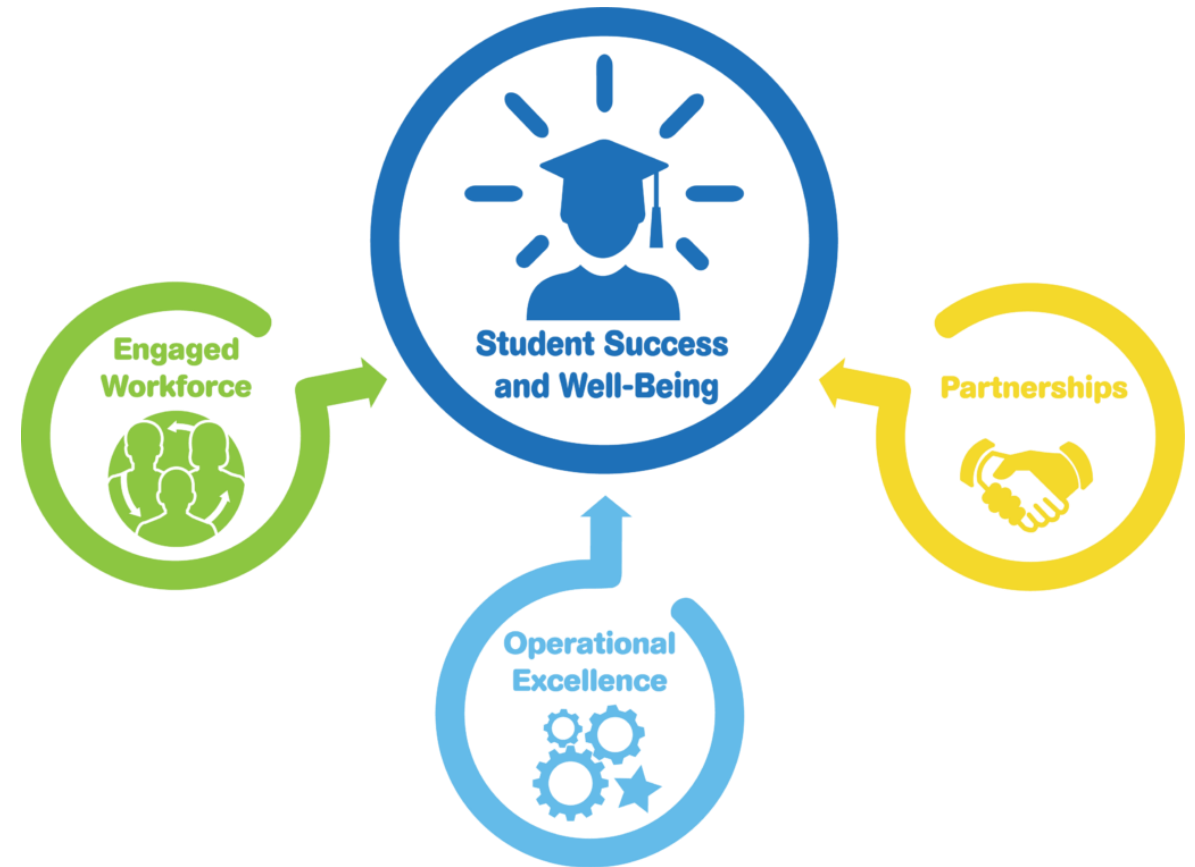
- ES Group 1: 7:30 AM - 2:21 PM
- MS: 7:40 AM - 2:24 PM

- New Directions: 8:15 AM – 3:00 PM
- Career Center: 8:35 AM – 3:55 PM
- HB Woodlawn: 8:35 AM - 3:27 PM
- HS: 8:40 AM - 3:32 PM
- ES Group 2: 8:40 AM - 3:31 PM

- Shriver: 9:24 AM – 4:16 PM
- ES Group 3: 9:20 AM - 4:11 PM



Scenario Option Discussions



SCENARIO ONE

Scenario One:

- MS: 7:50 AM - 2:34 PM
- ES Group 1: 8:00 AM - 2:51 PM
- New Directions: 8:15 AM – 3:00 PM
- Career Center: 8:19 AM – 3:39 PM
- HS: 8:25 AM - 3:17 PM
- ES Group 2: 8:25 AM - 3:16 PM
- ES Group 3: 9:00 AM - 3:51 PM
- Shriver: 9:24 AM – 4:16 PM
- HB Woodlawn: 9:24 AM - 4:16 PM

APS Scenario One

6 AM	7 AM	8 AM	9 AM				2 PM	3 PM	4 PM	5 PM
		7:50	Middle Schools	6	6:44		2:34			
		8:00	ES - 5 Buildings	5	6:51		2:51			
		8:15	New Directions	1	6:45		3:00			
		8:19	Career Center	1	7:20		3:39			
		8:25	High Schools	4	6:52		3:17			
		8:25	ES - 5 Buildings	5	6:51		3:16			
		9:00	ES - Fifteen Buildings	15	6:51		3:51			
		9:24	Shriver	1	6:52		4:16			
		9:24	H-B Woodlawn	1	6:52		4:16			

SCENARIO TWO

Scenario Two:

- MS: 7:30 AM - 2:14 PM
- ES Group 1: 7:30 AM - 2:21 PM
- New Directions: 8:15 AM – 3:00 PM
- Career Center: 8:15 AM - 3:35 PM
- HS: 8:19 AM - 3:11 PM
- ES Group 2: 8:19 AM - 3:10 PM
- Shriver: 9:24 AM – 4:16 PM
- ES Group 3: 9:24 AM - 4:15 PM
- HB Woodlawn: 9:24 AM - 4:16 PM

APS Scenario Two

6 AM	7 AM	8 AM	9 AM				2 PM	3 PM	4 PM	5 PM	
		7:30	Middle Schools			# Sch: 6	Length of Day: 6:44	2:14			
		7:30	ES - Five Buildings			# Sch: 5	Length of Day: 6:51	2:21			
		8:15	New Directions			# Sch: 1	Length of Day: 6:45		3:00		
		8:15	Career Center			# Sch: 1	Length of Day: 7:20			3:35	
		8:19	High Schools			# Sch: 4	Length of Day: 6:52			3:11	
		8:19	ES - Five Buildings			# Sch: 5	Length of Day: 6:51			3:10	
		9:24	Shriver			# Sch: 1	Length of Day: 6:52				4:16
		9:24	ES - Fifteen Buildings			# Sch: 15	Length of Day: 6:51				4:15
		9:24	H-B Woodlawn			# Sch: 1	Length of Day: 6:52				4:16

SCENARIO THREE

Scenario Three:

- ES Group 1: 7:30 AM - 2:21 PM
- MS: 7:40 AM - 2:24 PM
- New Directions: 8:15 AM – 3:00 PM
- Career Center: 8:35 AM - 3:55 PM
- HS: 8:40 AM - 3:32 PM
- ES Group 2: 8:40 AM - 3:31 PM
- Shriver: 9:24 AM – 4:16 PM
- ES Group 3: 9:20 AM - 4:11 PM
- HB Woodlawn: 9:24 AM - 4:16 PM

APS Scenario Three

6 AM	7 AM	8 AM	9 AM			2 PM	3 PM	4 PM	5 PM	
		7:30	ES - Five Buildings			5	6:51	2:21		
		7:40	Middle Schools			6	6:44	2:24		
		8:15	New Directions			1	6:45	3:00		
		8:35	Career Center			1	7:20	3:55		
		8:40	High Schools			4	6:52	3:32		
		8:40	ES - Five Buildings			5	6:51	3:31		
		9:24	Shriver			1	6:52	4:16		
		9:20	ES - Fifteen Buildings			15	6:51	4:11		
		9:24	H-B Woodlawn			1	6:52	4:16		

SCENARIO FOUR

Scenario Four:

- ES Group 1: 7:30 AM - 2:21 PM
- MS: 7:40 AM - 2:24 PM
- New Directions: 8:15 AM – 3:00 PM
- Career Center: 8:35 AM – 3:55 PM
- HB Woodlawn: 8:35 AM - 3:27 PM
- HS: 8:40 AM - 3:32 PM
- ES Group 2: 8:40 AM - 3:31 PM
- Shriver: 9:24 AM – 4:16 PM
- ES Group 3: 9:20 AM - 4:11 PM

APS Scenario Four

				# Sch	Length of Day	# Runs						
6 AM	7 AM	8 AM	9 AM				2 PM	3 PM	4 PM	5 PM		
		7:30	ES - Five Buildings			5	6:51	2:21				
		7:40	Middle Schools			6	6:44	2:24				
		8:15	New Directions			1	6:45	3:00				
		8:35	Career Center			1	7:20		3:55			
		8:35	H-B Woodlawn			1	6:52		3:27			
		8:40	High Schools			4	6:52		3:32			
		8:40	ES - Five Buildings			5	6:51		3:31			
		9:24	Shriver			1	6:52			4:16		
		9:20	ES - Fifteen Buildings			15	6:51			4:11		



TRANSPAR

THANK YOU

Micah Brassfield

Director of Advisory Services
mbrassfield@transpar.com

Mike Archer

Consultant/Analyst
marcher@transpar.com

Andrea Mason

Consultant/Analyst
amason@transpar.com

School Bell Times Study Technical Advisory Team (TAT)

Session I

Scenario overview and
discussion

