

Breakout Group Discussion Guide

Meeting #4



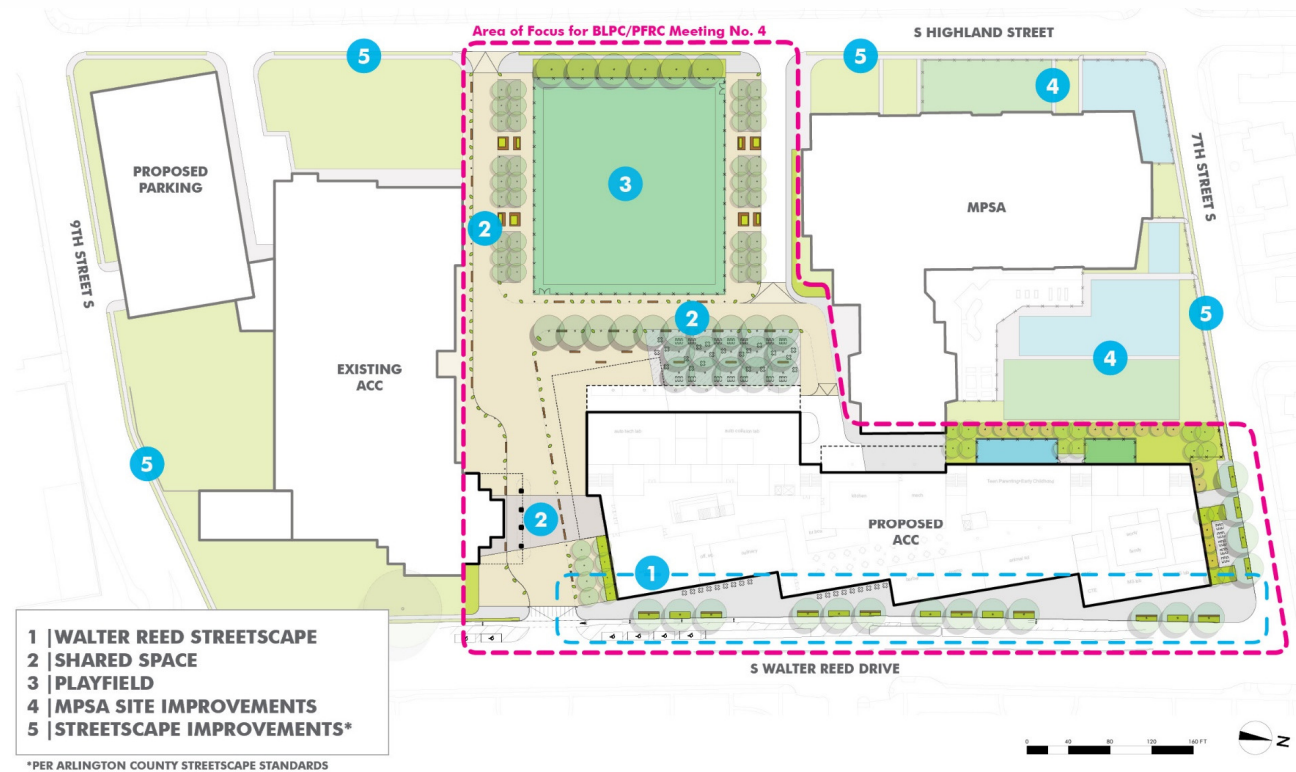
Questions for the Committee Discussions

7:20 to 7:32

Initial work in the schematic design phase on **site and landscape design** focused on the areas adjacent to the new ACC building. The decision to move MPSA into a refreshed existing ACC building will influence the interim condition proposed adjacent to each of the existing MPSA and ACC facilities. Those areas will be discussed further at a future meeting.

1a. What features of the site and landscape design shared in the advance material appeal to you?

1b. What additional questions do you have about site and landscape design?



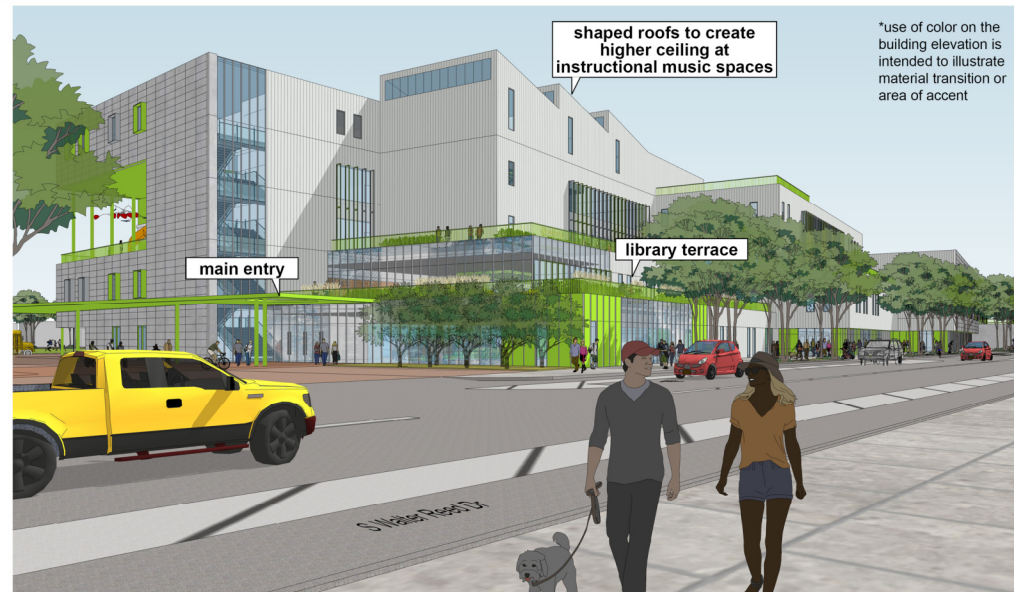
Questions for the Committee Discussions

7:33 to 7:45

Initial work in the schematic design phase on the **new ACC building design** focused on refining the massing and further articulating the façade with beginning to show openings and transparency. Specific building materials have not been selected yet.

2a. What features of the new ACC building design shared in the advance material appeal to you?

2b. What additional questions do you have about the building design?



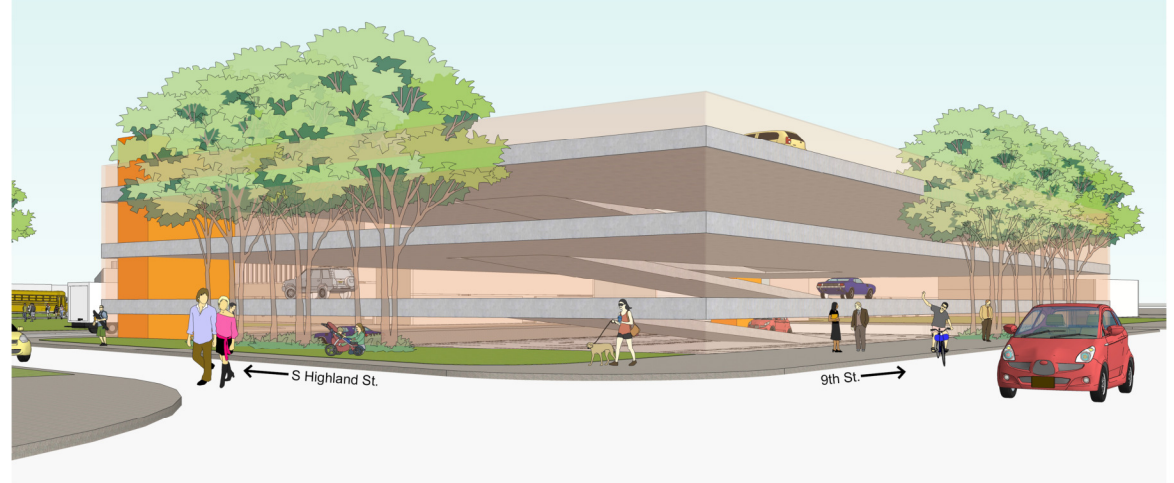
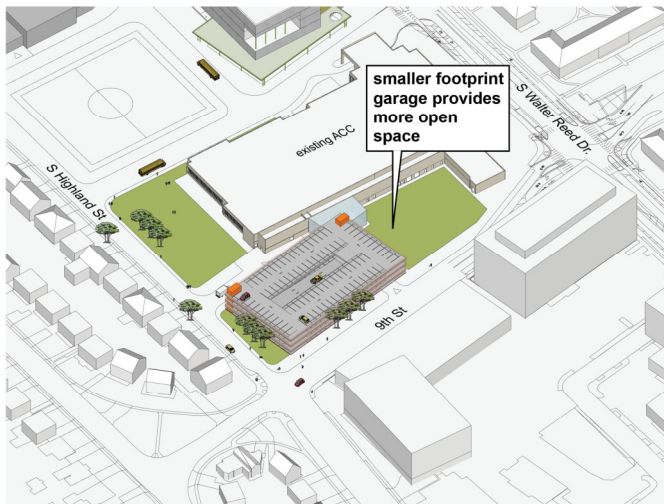
Questions for the Committee Discussions

7:46 to 7:59

The **proposed on-site parking plan** incorporates recommendations from the Draft Multi-Modal Transportation Analysis (MMTA), providing 360 spaces on-site within an above ground parking garage. Initial work in the schematic design phase has refined the massing and location of the placeholder garage included in the approved Concept Design. Note: façade treatment and screening of the garage will be reviewed in greater detail at meeting #5.

3a. What features of the plan and revised massing/location appeal to you?

3b. What additional questions do you have about parking?



*View provided to illustrate garage form, massing, and scale, not materials. Façade treatment and materials will be further developed as the Schematic Design phase progresses.



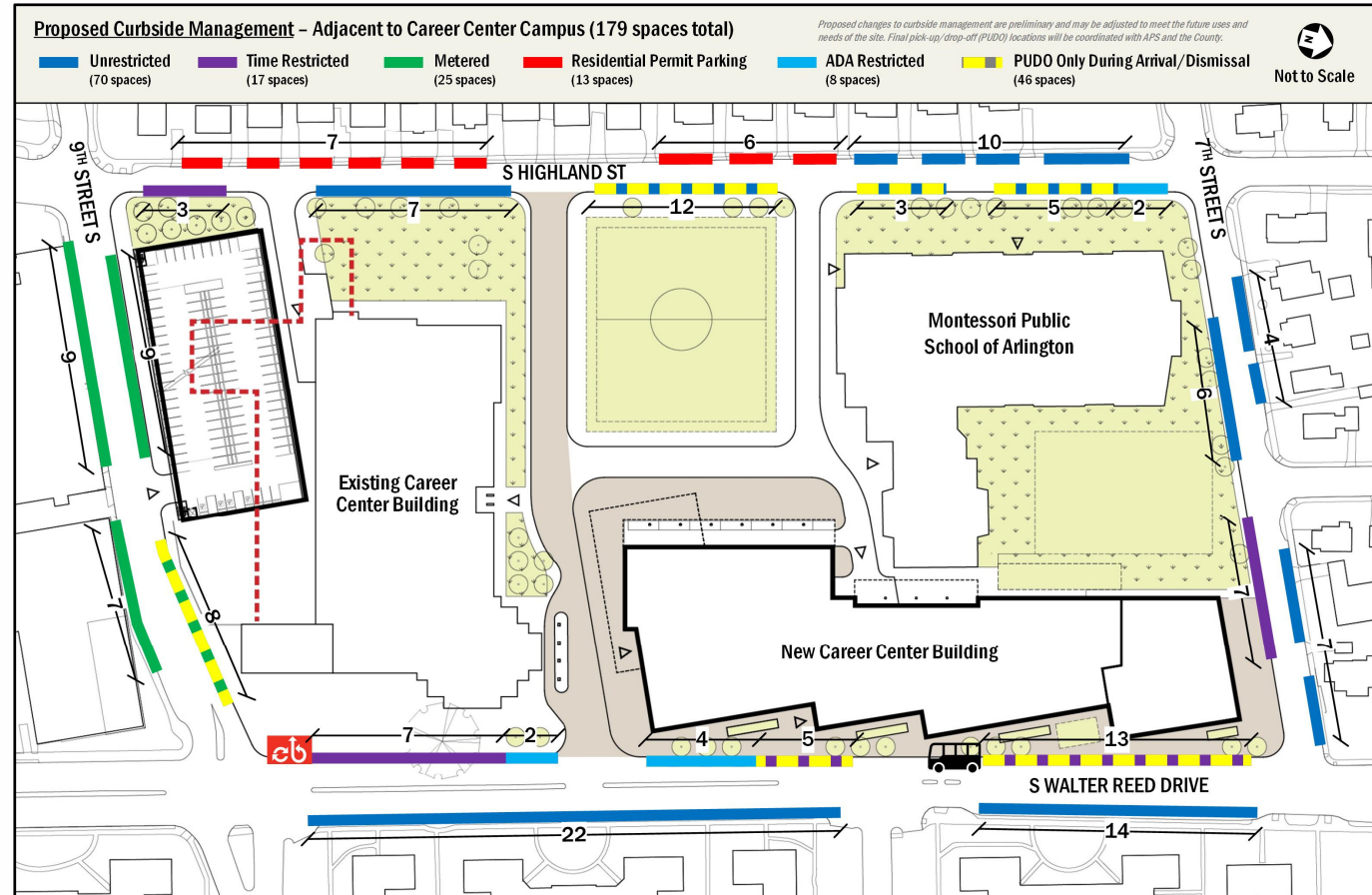
Questions for the Committee Discussions

8:00 to 8:12

The **proposed curbside management plan** will be in use from December 2025 (completion of the new ACC building) until August 2028 (when MPSA moves into a refreshed existing ACC building).

4a. What features of the plan appeal to you?

4b. What additional questions do you have about curbside management?



Questions for the Committee Discussions

8:13 to 8:25

Additional questions:

5. Identify additional questions or concerns with the schematic design progress and draft Multimodal Transportation Assessment (MMTA)
6. Identify specific areas of the project that should receive further development or focus before the July BLPC/PFRC meeting