

OPEN ENROLLMENT INTENSIFIED OR REGULAR CLASSES?

GUIDING QUESTIONS FOR PARENTS AND STUDENTS

THE FOLLOWING QUESTIONS ARE DESIGNED TO HELP STUDENTS DETERMINE WHICH MIDDLE SCHOOL COURSES WILL BE THE BEST FIT FOR THEIR LEARNING NEEDS. THESE QUESTIONS COULD BE USED TO HELP A STUDENT DETERMINE PERSONAL CURRENT INTEREST LEVELS AND CHALLENGE NEEDS WITHIN EACH OF THESE CONTENT AREAS: ENGLISH, SCIENCE, AND SOCIAL STUDIES. MATH COURSE SELECTION OCCURS THROUGH A SEPARATE PROCESS AND THE MATH COURSE RECOMMENDATION WILL BE COMMUNICATED TO FAMILIES.



IF A STUDENT ANSWERS MOST OF THE QUESTIONS WITH A "YES," EXCITEMENT, AND/OR CONFIDENCE IN ABILITY DURING YOUR DISCUSSION, THEN THE SUBJECT AREA IS PROBABLY AN INTEREST AREA AND AN INTENSIFIED COURSE MIGHT BE THE RIGHT FIT FOR THE STUDENT'S CURRENT LEARNING NEEDS WITHIN THE SPECIFIC CONTENT AREA.

IF A STUDENT ANSWERS MOST OF THE QUESTIONS WITH A "NO," INDIFFERENCE, AND/OR LITTLE CONFIDENCE IN ABILITY DURING YOUR DISCUSSION, THEN THE SUBJECT AREA MAY NOT BE A CURRENT INTEREST AREA AND A REGULAR COURSE MIGHT BE THE RIGHT FIT FOR THE STUDENT'S CURRENT LEARNING NEEDS WITHIN THE SPECIFIC CONTENT AREA.



AS YOU DISCUSS, PLEASE REMEMBER:



- THESE COURSE OPTIONS ARE OPEN TO ALL STUDENTS. INTERESTED STUDENTS MAY WISH TO BEGIN WITH TAKING ONE, TWO, OR THREE INTENSIFIED COURSES.
- THESE COURSES ARE DESIGNED USING THE SAME GRADE LEVEL STANDARDS. INTENSIFIED DOES NOT MEAN MORE WORK FOR STUDENTS - IT IS DIFFERENT WORK THAT GOES DEEPER INTO THE CONTENT.
- THERE ARE NO PREREQUISITES EACH YEAR; CHOOSING ONE COURSE OPTION FOR THE UPCOMING YEAR DOES NOT DETERMINE COURSE PLACEMENT FOR FUTURE YEARS.
- ALL COURSES WILL OFFER OPPORTUNITIES TO DEVELOP CRITICAL AND CREATIVE THINKING SKILLS NECESSARY TO SUCCEED IN ADVANCED HIGH SCHOOL COURSES WITHIN THE CONTENT AREA.

INTENSIFIED OR REGULAR CLASSES?



GENERAL QUESTIONS TO CONSIDER

- WHAT SUBJECT AREAS DO YOU LOVE?
- WHAT ARE YOUR AREAS OF STRENGTH AND AREAS FOR GROWTH?
- HOW WELL DO YOU MANAGE YOUR TIME AND SCHOOL WORK?
- HOW WOULD YOU DESCRIBE YOUR LEVEL OF MOTIVATION?
- HOW COMFORTABLE ARE YOU WITH TAKING INITIATIVE, OR EXPLORING IDEAS ON YOUR OWN?
- WHAT COMBINATION OF REGULAR AND/OR INTENSIFIED COURSES WOULD YOU PREFER?

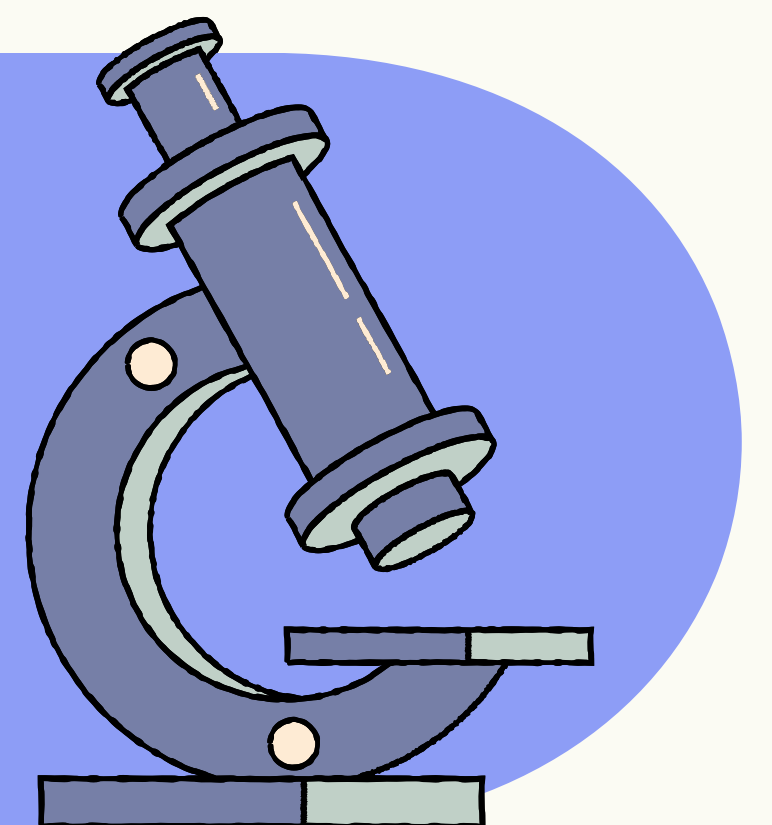
ENGLISH

- DO YOU ENJOY READING OFTEN, MULTIPLE GENRE FORMS AND TIME PERIODS?
- TO WHAT EXTENT DO YOU LIKE TO ANALYZE DIFFERENT CHARACTERS AND AUTHORS' PERSPECTIVES AND COMPARE THEM TO YOU, THE COMMUNITY AND THE WORLD?
- WHAT IS YOUR COMFORT LEVEL IN ACTIVELY CONTRIBUTING TO CLASS DISCUSSIONS AND SHARING YOUR THOUGHTS?
- DO YOU LIKE TO WRITE FOR EXTENDED TIME TO SUPPORT UNDERSTANDING AND ANALYSIS?



SCIENCE

- DO YOU QUESTION OR WONDER HOW THINGS WORK ON A REGULAR BASIS?
- DO YOU OFTEN ASK QUESTIONS AND THEN INVESTIGATE OR EXPERIMENT TO ANSWER THOSE QUESTIONS?
- DO YOU THINK ABOUT HOW SCIENCE IMPACTS YOUR LIFE ON A REGULAR BASIS?
- ARE YOU HIGHLY INTERESTED IN SCIENCE-RELATED TOPICS (I.E. READ/RESEARCH INFORMATION/NEWS AS SELF-INTEREST)?



SOCIAL STUDIES

- DO YOU ENJOY FOLLOWING, WATCHING, AND/ OR DISCUSSING THE NEWS AND CURRENT EVENTS ON A REGULAR BASIS?
- DO YOU WONDER ABOUT WAYS THE ECONOMY OR THE GOVERNMENT WORK AND HOW THEY IMPACT OUR DAILY LIVES?
- HAVE YOU ENGAGED IN ADVOCATING FOR AN ISSUE? (I.E. COMMUNITY ISSUES LIKE “THE MISSING MIDDLE”, VOTER RIGHTS, CURRENT LEGISLATION OR SUPREME COURT CASES)
- DO YOU ENJOY READING NONFICTION TEXTS TO EXPLORE PERSPECTIVES AND IDEAS ABOUT OUR GOVERNMENT, OUR COUNTRY AND THE WORLD?

