

## 2025-26 Arlington County Honors Band

### Audition Music: **FLUTE**

Auditions for the Honors Band are Thursday, November 6, **2025** at Kenmore Middle School.

Auditions are scheduled between 4:30 - 7:00 PM. Check-in begins 15 minutes prior to your audition slot.

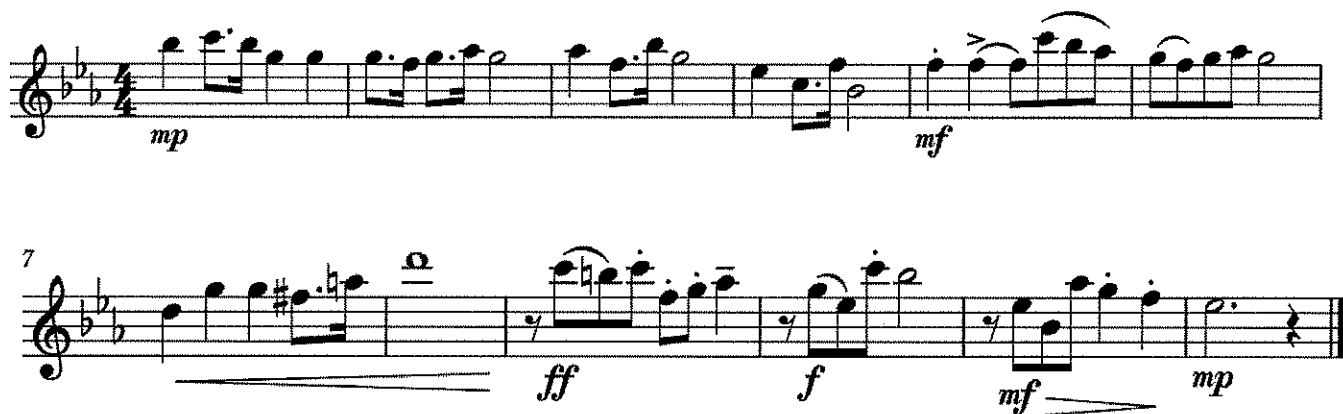
Please register online! Scoring Rubric, complete information, and on-line registration is available at:

<https://www.apsva.us/curriculum/arts-education/honors-music-band-chorus-orchestra/>

**Major Scales (2 scales x 10 points = 20 points):** Each student will be asked to perform two major scales, selected from concert C, F, B-flat, E-flat, and A-flat. Scales should be **memorized**. Tempo for the scales is MM=100 for the quarter note. Scales should be articulated with a **legato** tongue ascending and descending. Major scales are performed using the rhythm and ranges in the APS Honor Band Scale Practice Guide at MM = 100. Students may use the District 12 audition requirement if they wish.

**Chromatic Scale (20 points):** The chromatic scale should be played for a minimum of one octave as prescribed in the APS Scale Practice Guide. The scale should be **memorized** and performed **at or above** MM = 120. Students should play even slurred eighth notes ascending, pause at the top for a breath, if needed, and continue playing even staccato eighth notes descending. Students may use the District 12 audition requirement if they wish.

**Prepared Selection (40 points):** Each student will be asked to perform the following musical excerpt for their audition. Students will be asked to play the entire selection.



**Sight Reading (20 points):** Each student will be asked to sight read as part of the audition.

# Flute

## APS Honor Band

### Scale Practice Guide

All scales must be performed from memory. Use legato articulation throughout.  
Scales show preferred minimum range and tempo. One octave is permissible.  
Students may use District 12 All-District Band requirement if desired.

♩ = 100



Concert C Major



6 Concert F Major



11 Concert B-flat Major



16 Concert E-flat Major



21 Concert A-flat Major

The Chromatic Scale should be performed legato ascending, staccato descending.  
Students may perform additional octaves if desired, or use the District 12 audition requirement.



26 ♩ = 120