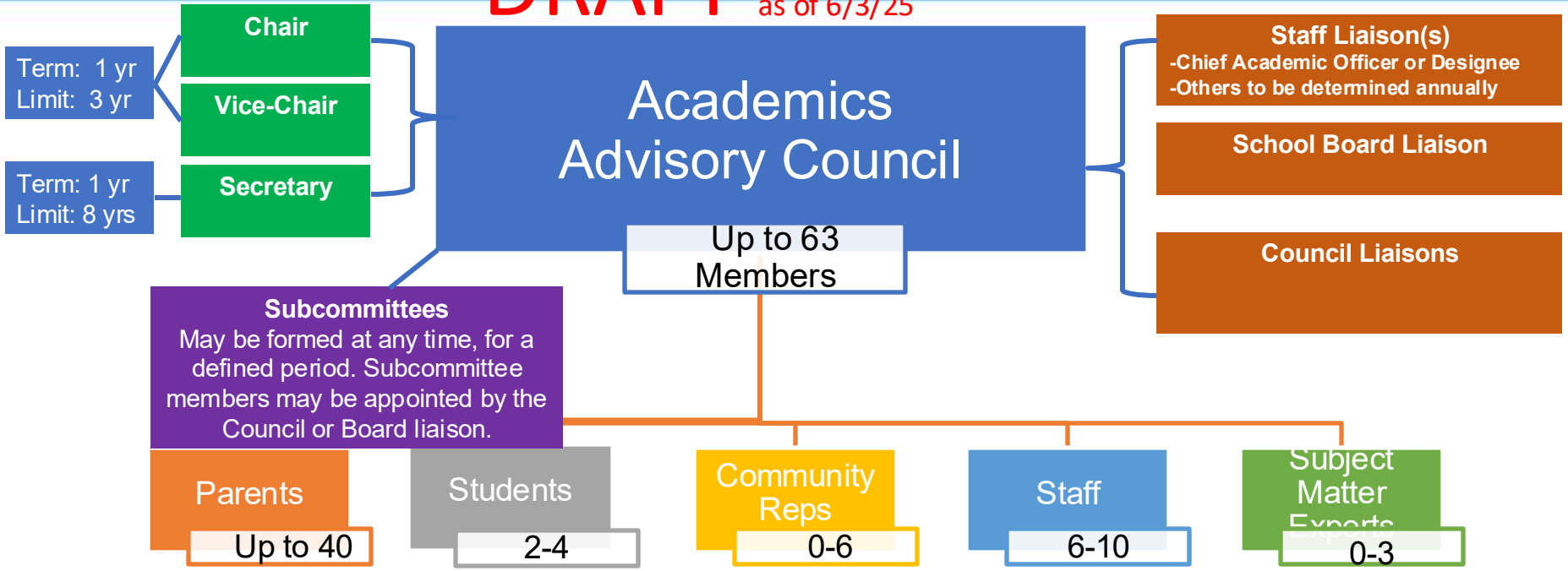


Draft Advisory Council Membership
Composition,
Revised on June 3, 2025
at
Working Group Meeting #8

DRAFT as of 6/3/25



Members appointed by School Board

Term: 1 year (with option to renew for 2nd year without needing to reapply)
Limit: 8 years (can be extended by School Board based on the needs of the council and expertise of the council member)



DRAFT



Parents

Max 40 - one
per school

Include mix of:

- school levels
- neighborhood &
option schools
- geographic diversity

Students

Min 2
Max 4

Include mix of:

- school levels
- neighborhood &
option schools
- geographic diversity

Community Members

Min 0
Max 6

Must be Arlington
residents.

In particular, aim to
recruit:

- Recent APS alums
- Civil rights orgs,
nonprofits, military,
local business
- Current instructors,
staff, administrators
at regional schools
of higher ed (NOVA,
Geo Mason, etc)

Staff

School-Based
Min 4, Max 7

**Central Office
(specialists or non-
supervisory)**
Min 2, Max 3

Include mix of:

- classroom teachers,
counselors, admin,
specialists, coaches,
interventionists
- school levels
- content areas
- Special populations (EL,
SWD, Gifted)

Subject Matter Experts

Min 0
Max 2

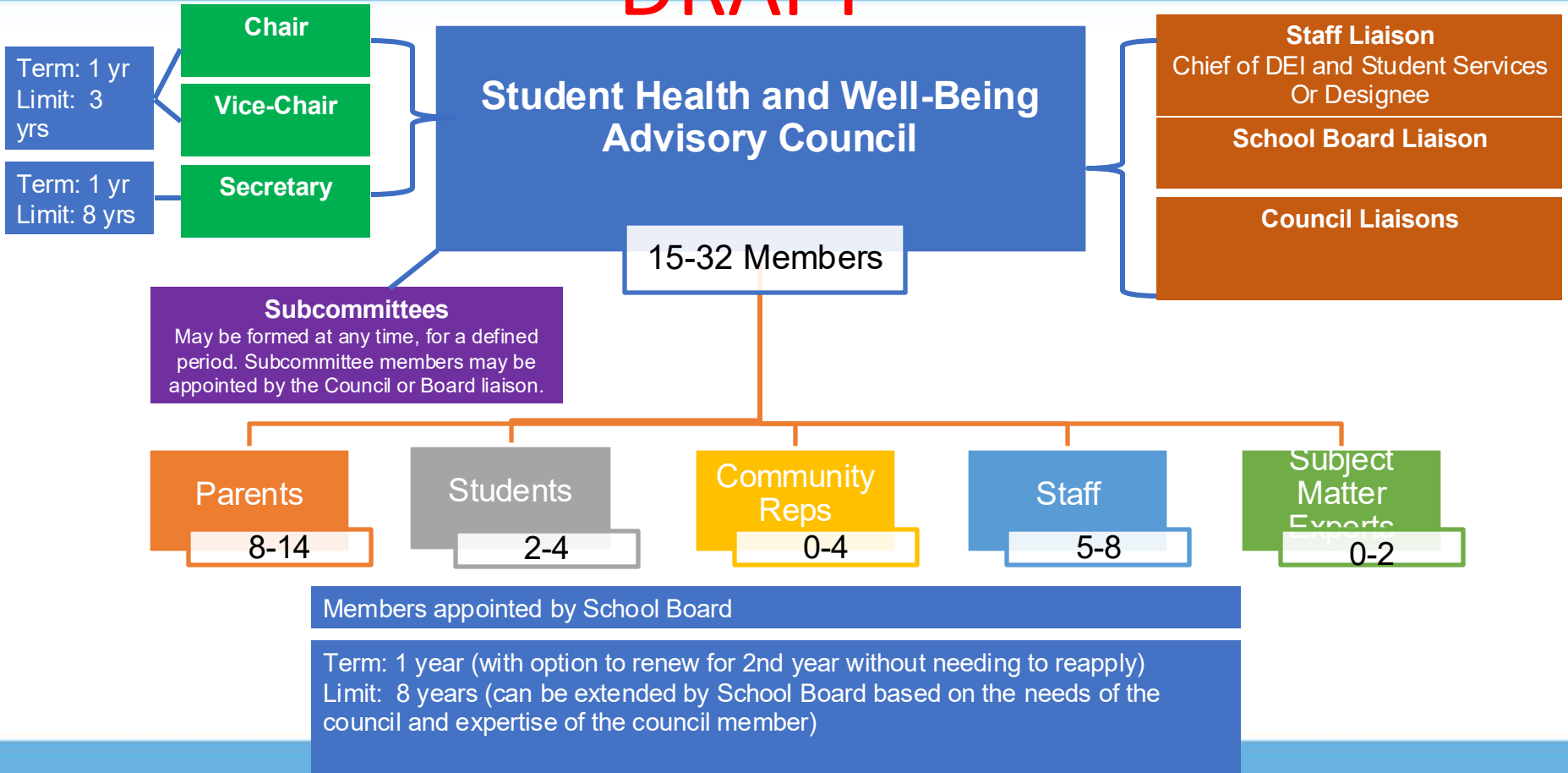
Individuals with
professional expertise,
i.e.

- Early childhood
- Former teachers,
staff, admin
- Curriculum
development
- Education research

Budget Rep (1) - Budget rep is included in counts above and can be a parent, community member or subject matter expert

Title I reps (2) - At least one parent seat and one staff seat listed above is designated for reps from a Title I school

DRAFT



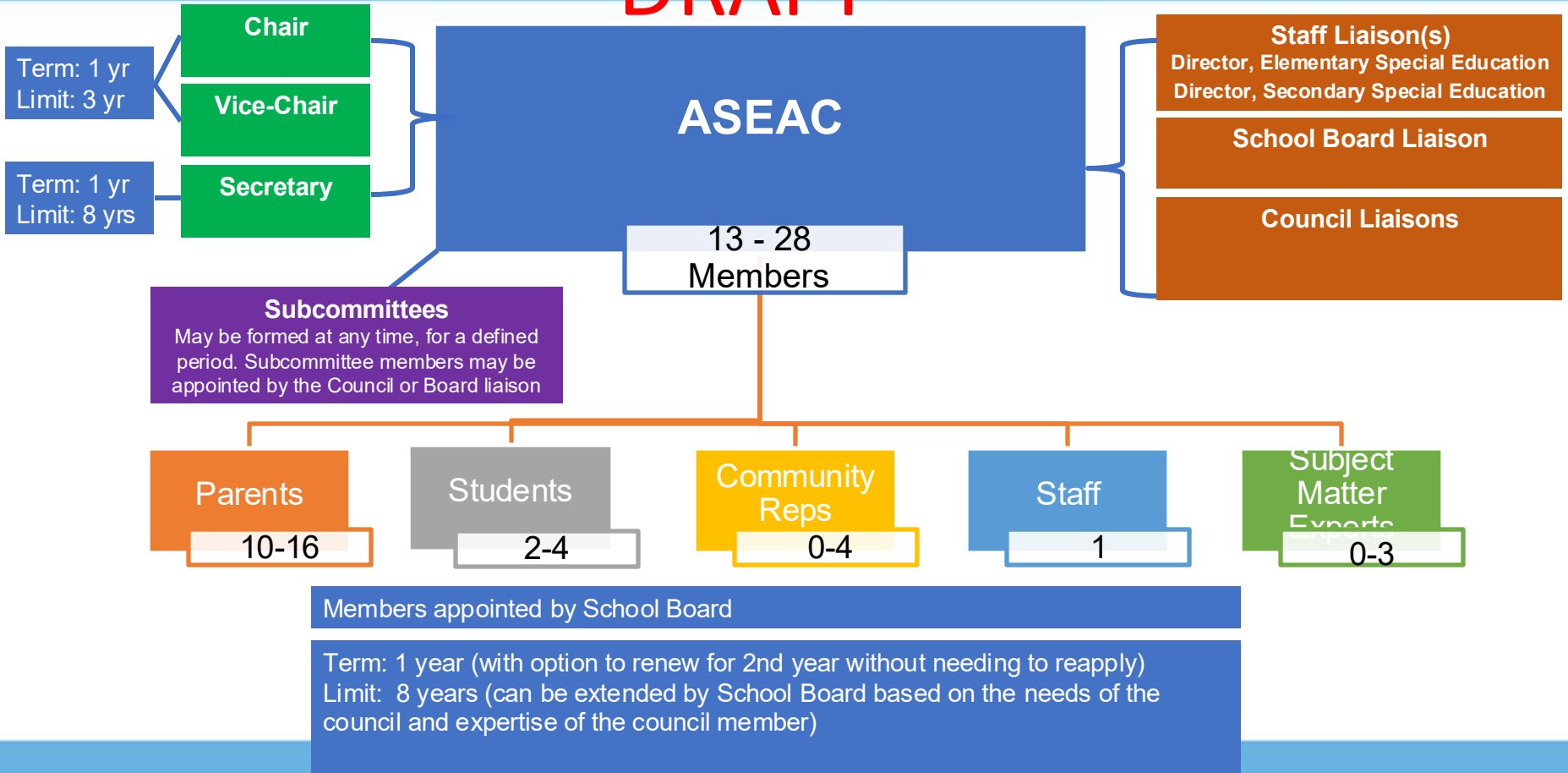
DRAFT

Parents	Students	Community Reps	Staff	Subject Matter Experts
<p>Min 8 Max 14</p> <p>Include mix of:</p> <ul style="list-style-type: none"> -school levels -neighborhood & option schools -geographic diversity 	<p>Min 2 Max 4</p> <p>Include mix of:</p> <ul style="list-style-type: none"> -neighborhood & option schools -geographic diversity 	<p>Min 0 Max 4</p> <p>Must be Arlington residents.</p> <p>In particular, aim to recruit:</p> <ul style="list-style-type: none"> • Recent APS alums • Civil rights orgs, nonprofits, health groups 	<p>School-Based Min 4, Max 6</p> <p>Central Office (non-supervisory or specialists) Min 1, Max 2</p> <p>Mix of counselors, classroom teachers, assistants, student activities staff (coaches, arts directors), social workers & school psychologists</p> <p>Mostly staff who are either school-based or who are central-based in positions that spend 75%+ of their time in schools</p>	<p>Min 0 Max 2</p> <p>Individuals with professional expertise, especially</p> <ul style="list-style-type: none"> • Former teaches, staff, admin • Mental health & medical professionals • Professionals from mental health nonprofits

Budget Rep (1) - Budget rep is included in counts above and can be a parent, community member or subject matter expert

Title I reps (2) - At least one parent seat and one staff seat listed above is designated for reps from a Title I school

DRAFT





DRAFT



Parents

Min 10

Max 16

Per code:

"A majority [of members] shall be parents of children with disabilities or individuals with disabilities"

Include mix of:

-school levels

-neighborhood & option schools

-geographic diversity

Students

Min 2

Max 4

Include mix of:

-neighborhood & option schools

-geographic diversity

Community Reps

Min 0

Max 4

Must be Arlington residents.

In particular, aim to recruit:

- Recent APS alums
- Civil rights orgs, nonprofits, local business
- Current instructors, staff, administrators at regional schools of higher ed (NOVA, Geo Mason, etc)

Staff

1 teacher

Per code:

"The committee shall include one teacher."

Additional local school division personnel shall serve only as consultants to the committee."

Subject Matter Experts

Min 0

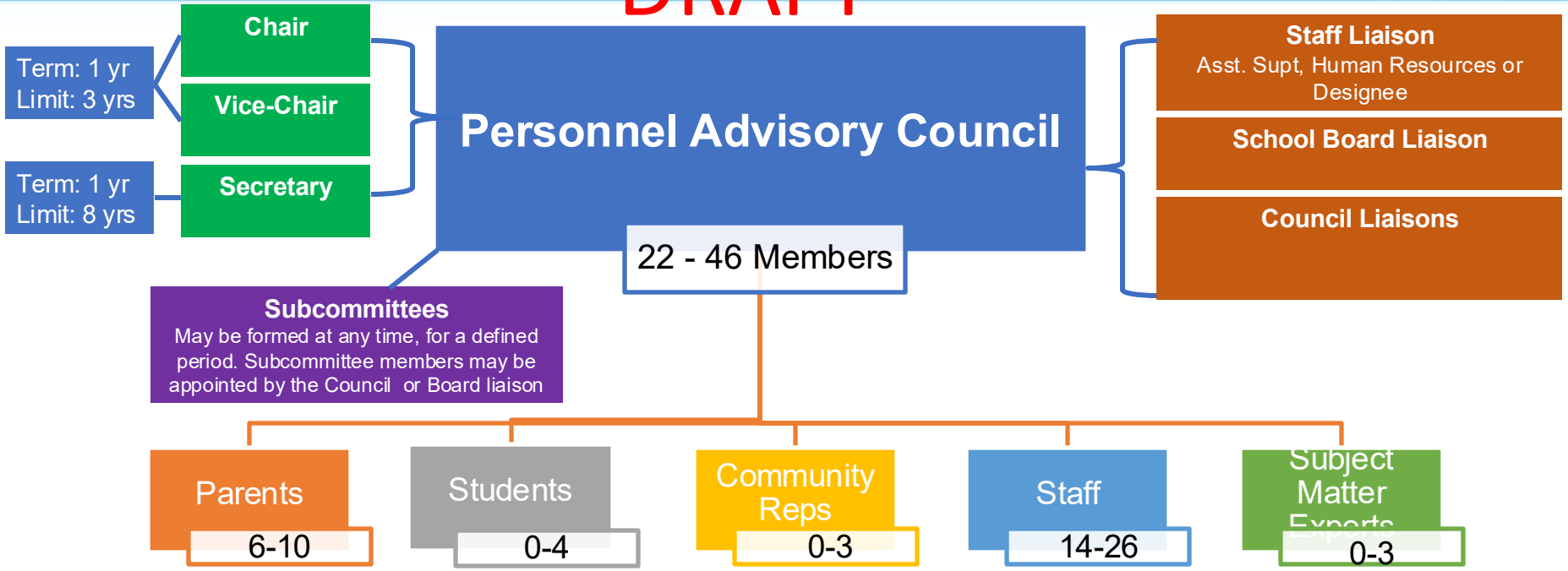
Max 3

Individuals with professional expertise

Budget Rep (1) - Budget rep is included in counts above and can be a parent, community member or subject matter expert

Title I reps (2) - At least one parent seat and one staff seat listed above is designated for reps from a Title I school

DRAFT



Members appointed by School Board upon recommendation from the Superintendent

Term: 1 year (with option to renew for 2nd year without needing to reapply)

Limit: 8 years (can be extended by School Board based on the needs of the council and expertise of the council member)



DRAFT

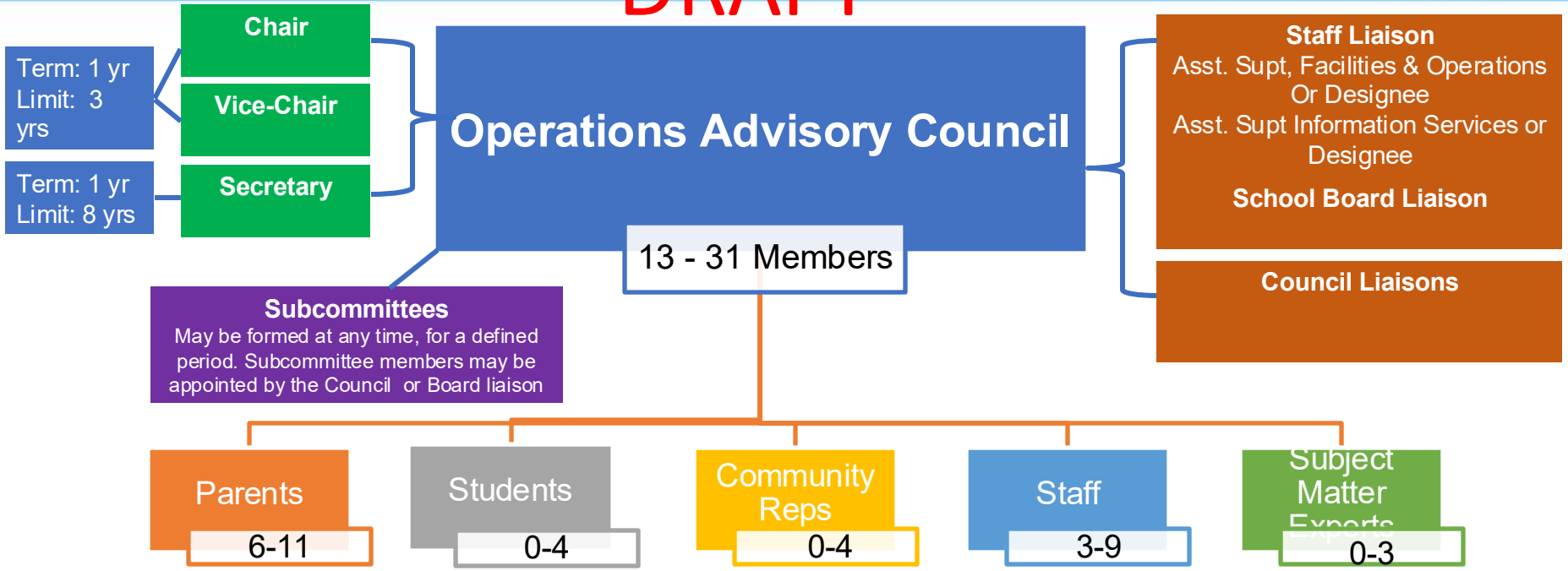


Parents	Students	Community Reps	Staff	Subject Matter Experts
<p>Min 6 Max 10</p> <p>Include mix of:</p> <ul style="list-style-type: none">-school levels-neighborhood & option schools-geographic diversity	<p>Min 2 Max 4</p> <p>Include mix of:</p> <ul style="list-style-type: none">-neighborhood & option schools-geographic diversity	<p>Min 0 Max 3</p> <p>Must be Arlington residents.</p>	<p>A-scale - 1-2 C-scale - 1-2 D-scale- 1-2 E-Scale- 1-2 G-Scale- 1-2 M-Scale- 1-2 N-Scale- 1-2 O-Scale- 1-2 P-Scale - 2-3 T-Scale - 3-5 X-Scale - 1-2</p> <p>T-Scale to include a mix of teachers, counselors, specialists</p>	<p>Min 0 Max 3</p> <p>Individuals with professional expertise, especially</p> <ul style="list-style-type: none">• Former teaches, staff, admin• HR professionals

Budget Rep (1) - Budget rep is included in counts above and can be a parent, community member or subject matter expert

Title I reps (2) - At least one parent seat and one staff seat listed above is designated for reps from a Title I school

DRAFT



Members appointed by School Board

Term: 1 year (with option to renew for 2nd year without needing to reapply)
Limit: 8 years (can be extended by School Board based on the needs of the council and expertise of the council member)

Operations Advisory Council_Membership

DRAFT

Parents	Students	Community Reps	Staff	Subject Matter Experts
<p>Min 6 Max 11</p> <p>Include mix of:</p> <ul style="list-style-type: none"> -school levels -neighborhood & option schools -geographic diversity <p>Aim for a least a third of seats filled with parents from Title I schools</p>	<p>Min 0 Max 4</p> <p>Include mix of:</p> <ul style="list-style-type: none"> -neighborhood & option schools -geographic diversity 	<p>Min 0 Max 4</p> <p>Must be Arlington residents.</p>	<p>Facilities & Operations Min 1, Max 2</p> <p>Information Services Min 1, Max 2</p> <p>School-based Min 1, Max 3</p> <p>Central-based (non-supervisory) Min 0, Max 2</p>	<p>Min 0 Max 3</p> <p>Individuals with professional expertise, especially</p> <ul style="list-style-type: none"> • Former teachers, staff, admin • IS professionals • Facility Management professionals • Construction

Budget Rep (1) - Budget rep is included in counts above and can be a parent, community member or subject matter expert

Title I reps (2) - At least one parent seat and one staff seat listed above is designated for reps from a Title I school

Include mix of: T-Scale, school administrators and staff across scales. Note