

# **School Board Advisory Committee Working Group**

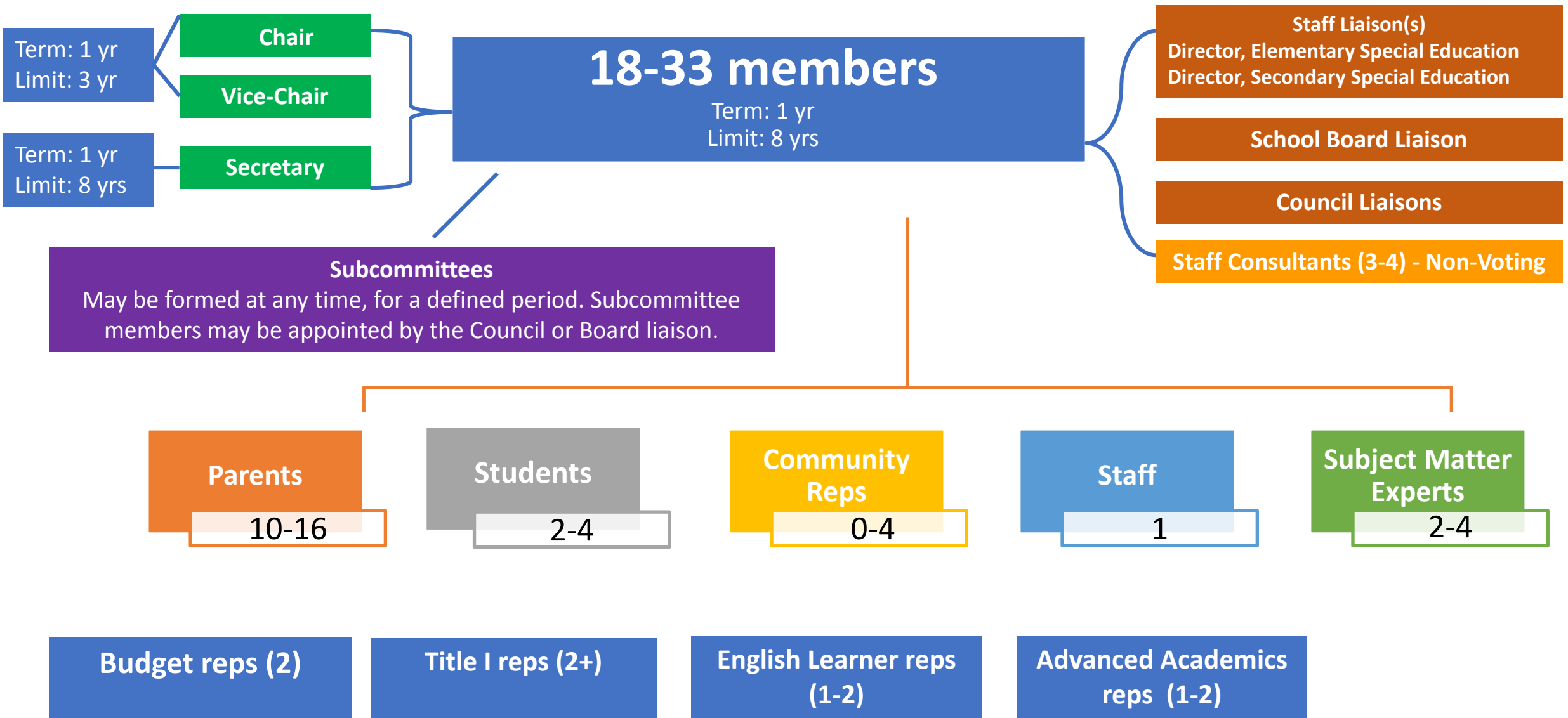
## **Recommended Membership Composition for Advisory Councils 2.0**

**FINAL Recommendation  
December 19, 2025**

	Parent Reps	Community Reps	Student Reps	Staff Reps	Subject Matter Experts	Total (Max)
ASEAC	10-16	0-4	2-4	3-5	2-4	33
Academics	Up to 40	0-6	2-6	6-10	1-4	66
Student Health & Well-Being	8-14	0-4	2-4	4-6	1-4	32
Personnel	6-10	0-3	0-4	14-26	0-3	46
Operations	6-11	0-4	0-4	3-9	1-4	32
CTE	4-8	5-10	2-6	7-10	5-10	44
<b>Total (Max)</b>	<b>99</b>	<b>31</b>	<b>28</b>	<b>66</b>	<b>29</b>	<b>253</b>

# Arlington Special Education Advisory Council (ASEAC)

## Membership

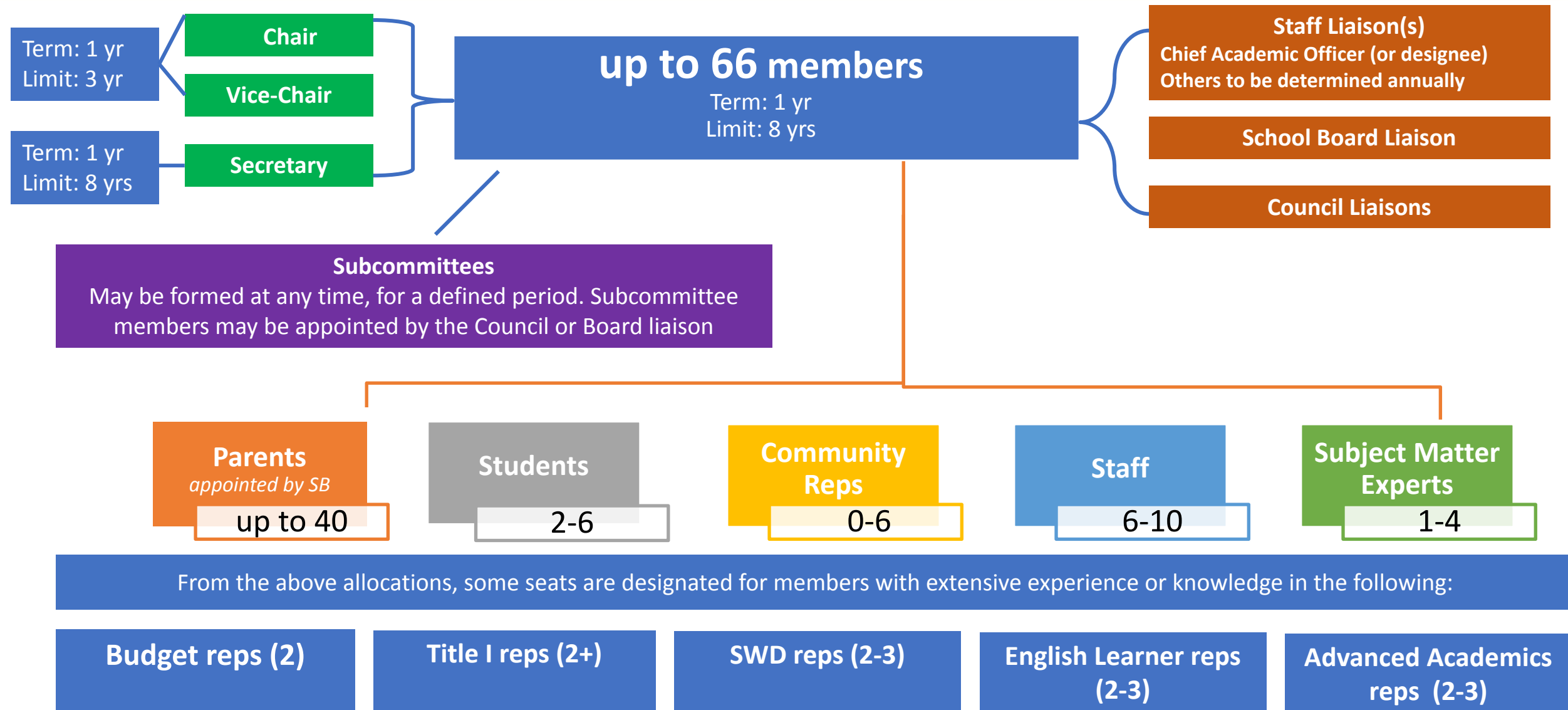


Parents	Students	Community Reps	Staff	Subject Matter Experts
<p>Min 10 - Max 16</p> <p>Per <a href="#">code</a>: “A majority [of members] shall be parents of children with disabilities or individuals with disabilities.”</p> <p>Include mix of:</p> <ul style="list-style-type: none"> <li>- school levels</li> <li>- neighborhood &amp; option schools</li> <li>- geographic diversity</li> </ul>	<p>Min 2 - Max 4</p> <p>Include mix of:</p> <ul style="list-style-type: none"> <li>- neighborhood &amp; option schools</li> <li>- geographic diversity</li> </ul>	<p>Min 0 - Max 4</p> <p>Must be Arlington residents</p> <p>In particular, recruit:</p> <ul style="list-style-type: none"> <li>- Recent APS alums</li> <li>- Civil rights orgs, nonprofits, local business</li> <li>- Current instructors, staff, administrators at regional schools of higher ed (NOVA, GMU, etc.)</li> </ul>	<p>1 teacher</p> <p>Per <a href="#">code</a>: “The committee shall include one teacher. Additional local school division personnel shall serve only as consultants to the committee.”</p>	<p>Min 2 - Max 4</p> <p>Individuals with professional expertise in Special Education</p>

**Budget Reps (2)** - Budget reps can be a parent, community member or subject matter expert

**Title I reps (2)** - At least one parent seat and the staff seat are designated for reps from a Title I school

**English Learner reps (1-2) & Advanced Academic reps (1-2)** -at least one rep from must be a parent of current or former student who are (were) English Learner or in Advanced Academics.

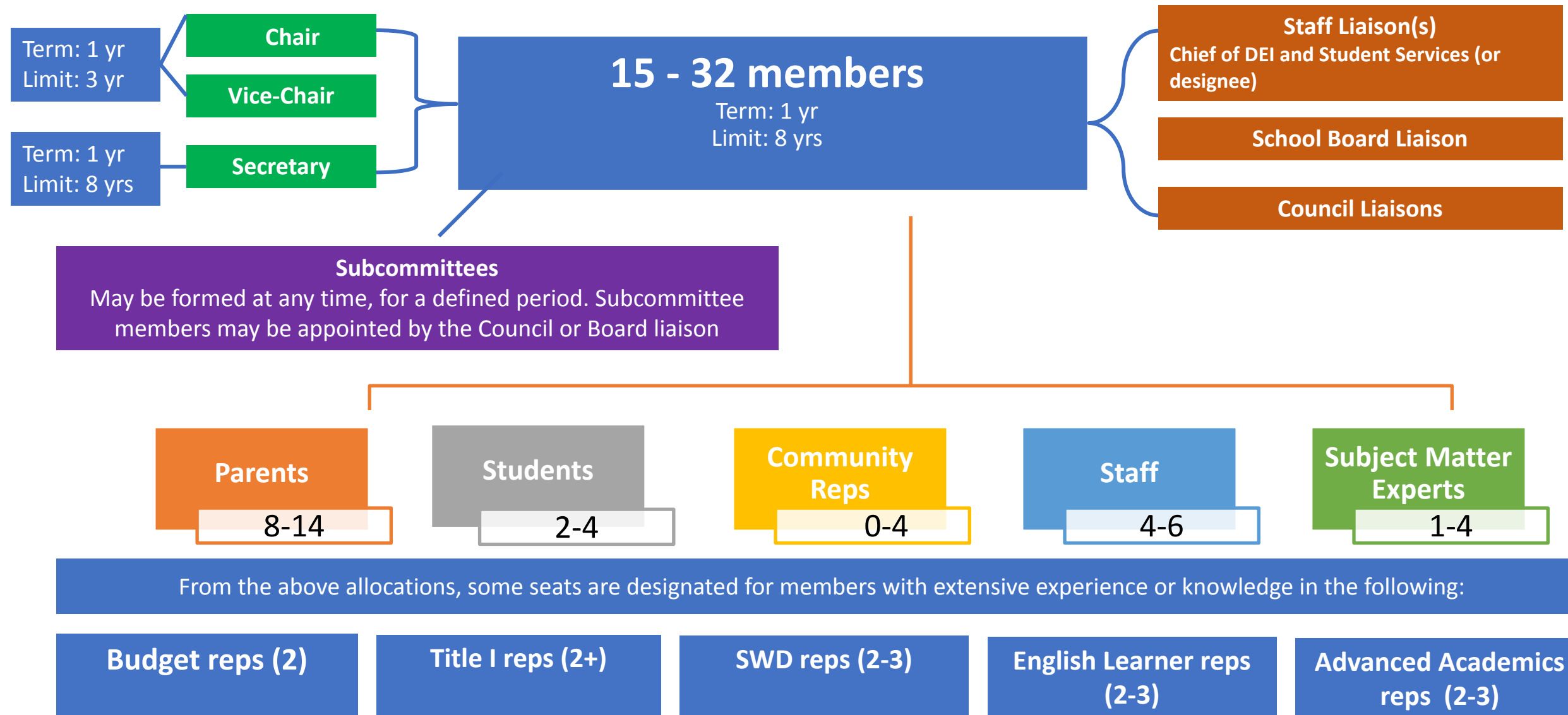


Parents	Students	Community Reps	Staff	Subject Matter Experts
<p>Max 40 [one/school]</p> <p>4:1 ratio parents:Staff</p> <p>Include mix of:</p> <ul style="list-style-type: none"> <li>- school levels</li> <li>- neighborhood &amp; option schools</li> <li>-neighborhood &amp; option schools</li> <li>-geographic diversity</li> </ul>	<p>Min 2 - Max 6</p> <p>Include mix of:</p> <ul style="list-style-type: none"> <li>- school levels</li> <li>- neighborhood &amp; option schools</li> <li>- geographic diversity</li> </ul>	<p>Min 0 - Max 6</p> <p>Must be Arlington residents</p> <p>In particular, recruit:</p> <ul style="list-style-type: none"> <li>-Recent APS alums</li> <li>-Civil rights orgs, nonprofits, local business</li> <li>-Current instructors, staff, administrators at regional schools of higher ed (NOVA, GMU, etc.)</li> </ul>	<p>School-Based: 4-7</p> <p>Central Office (specialists or non-supervisory): 2-3</p> <p>Include mix of:</p> <ul style="list-style-type: none"> <li>- classroom teachers, counselors, admin, specialists, coaches, interventionists</li> <li>- school levels</li> <li>- content areas</li> <li>- special populations (EL, SWD, Gifted)</li> </ul>	<p>Min 1 - Max 4</p> <p>Individuals with professional expertise, i.e.,</p> <ul style="list-style-type: none"> <li>• Early childhood</li> <li>• Former teachers, staff, admin</li> <li>• Curriculum development</li> <li>• Education research</li> </ul>

**Budget Rep (s)** - Budget reps can be a parent, community member or subject matter expert

**Title I reps (2)** - At least one parent seat and the staff seat are designated for reps from a Title I school

**SWD (2-3), English Learner reps (2-3) & Advanced Academic reps (2-3)** -at least one rep from must be a parent of current or former student who receive(d) Special Education services, are (were) English Learners or in Advanced Academics.





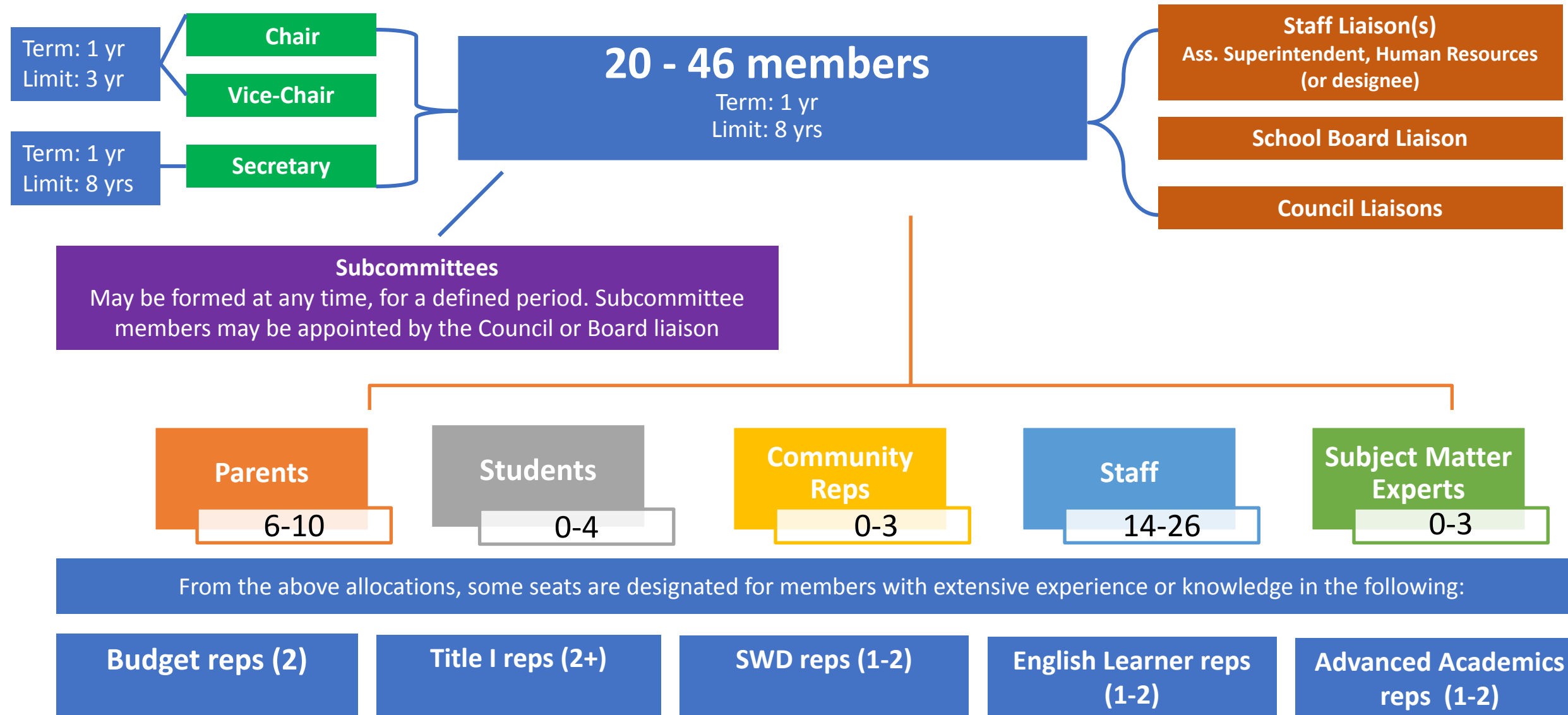
Parents	Students	Community Reps	Staff	Subject Matter Experts
<p>Min 8 - Max 14</p> <p>Include mix of:</p> <ul style="list-style-type: none"> <li>- school levels</li> <li>- neighborhood &amp; option schools</li> <li>- geographic diversity</li> </ul>	<p>Min 2 - Max 4</p> <p>Include mix of:</p> <ul style="list-style-type: none"> <li>- neighborhood &amp; option schools</li> <li>- geographic diversity</li> </ul>	<p>Min 0 - Max 4</p> <p>Must be Arlington residents</p> <p>In particular, recruit:</p> <ul style="list-style-type: none"> <li>- Recent APS alums</li> <li>- Civil rights orgs, nonprofits, health groups</li> </ul>	<p>Min 4 - Max 6</p> <p><b>School-Based: 3-4</b></p> <p><b>Central Office (specialists or non-supervisory): 1- 2</b></p> <p>Include a mix of counselors, classroom teachers, assistants, student activities staff (coaches, arts directors), social workers &amp; school psychologists</p> <p>Mostly staff who are either school-based or who are central-based in positions that spend 75%+ of their time in schools</p>	<p>Min 1 - Max 4</p> <p>Individuals with professional expertise, especially</p> <ul style="list-style-type: none"> <li>- Former teaches, staff, admin</li> <li>- Mental health and medical professionals</li> <li>- Professionals from mental health nonprofits</li> </ul>

**Budget Rep (s)** - Budget reps can be a parent, community member or subject matter expert

**Title I reps (2)** - At least one parent seat and the staff seat are designated for reps from a Title I school

**SWD (2-3), English Learner reps (2-3) & Advanced Academic reps (2-3)** -at least one rep from must be a parent of current or former student who receive(d) Special Education services, are (were) English Learners or in Advanced Academics.



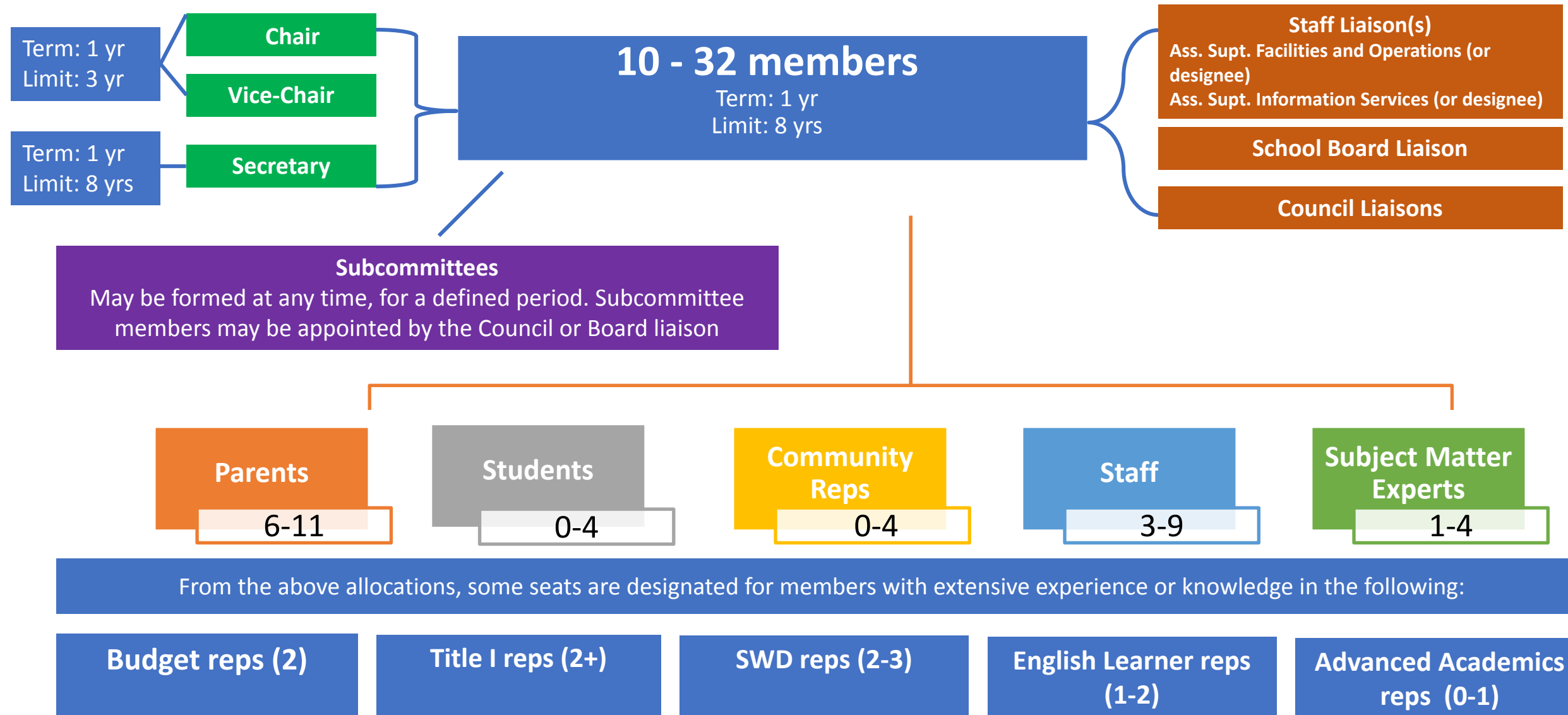


Parents	Students	Community Reps	Staff	Subject Matter Experts
<p>Min 6 - Max 10</p> <p>Include mix of:</p> <ul style="list-style-type: none"> <li>- school levels</li> <li>- neighborhood &amp; option schools</li> <li>- geographic diversity</li> </ul>	<p>Min 0 - Max 4</p> <p>Include mix of:</p> <ul style="list-style-type: none"> <li>- neighborhood &amp; option schools</li> <li>- geographic diversity</li> </ul>	<p>Min 0 - Max 3</p> <p>Must be Arlington residents</p>	<p>Min 14 - Max 26</p> <ul style="list-style-type: none"> <li>• A-Scale: 1-2</li> <li>• C-Scale: 1-2</li> <li>• D-Scale: 1-2</li> <li>• E-Scale: 1-2</li> <li>• G-Scale: 1-2</li> <li>• M-Scale: 1-2</li> <li>• N-Scale: 1-2</li> <li>• O-Scale: 1-2</li> <li>• P-Scale: 2-3</li> <li>• T-Scale: 3-5</li> <li>• X-Scale: 1-2</li> </ul> <p>T-Scale to include a mix of teachers, counselors, specialists</p>	<p>Min 0 - Max 3</p> <p>Individuals with professional expertise, especially</p> <ul style="list-style-type: none"> <li>- Former teaches, staff, admin</li> <li>- HR professionals</li> </ul>

**Budget Reps (2)** - Budget reps can be a parent, community member or subject matter expert

**Title I reps (2)** - At least one parent seat and the staff seat are designated for reps from a Title I school

**SWD (1-2), English Learner reps (1-2) & Advanced Academic reps (1-2)** -at least one rep from must be a parent of current or former student who receive(d) Special Education services, are (were) English Learners or in Advanced Academics.

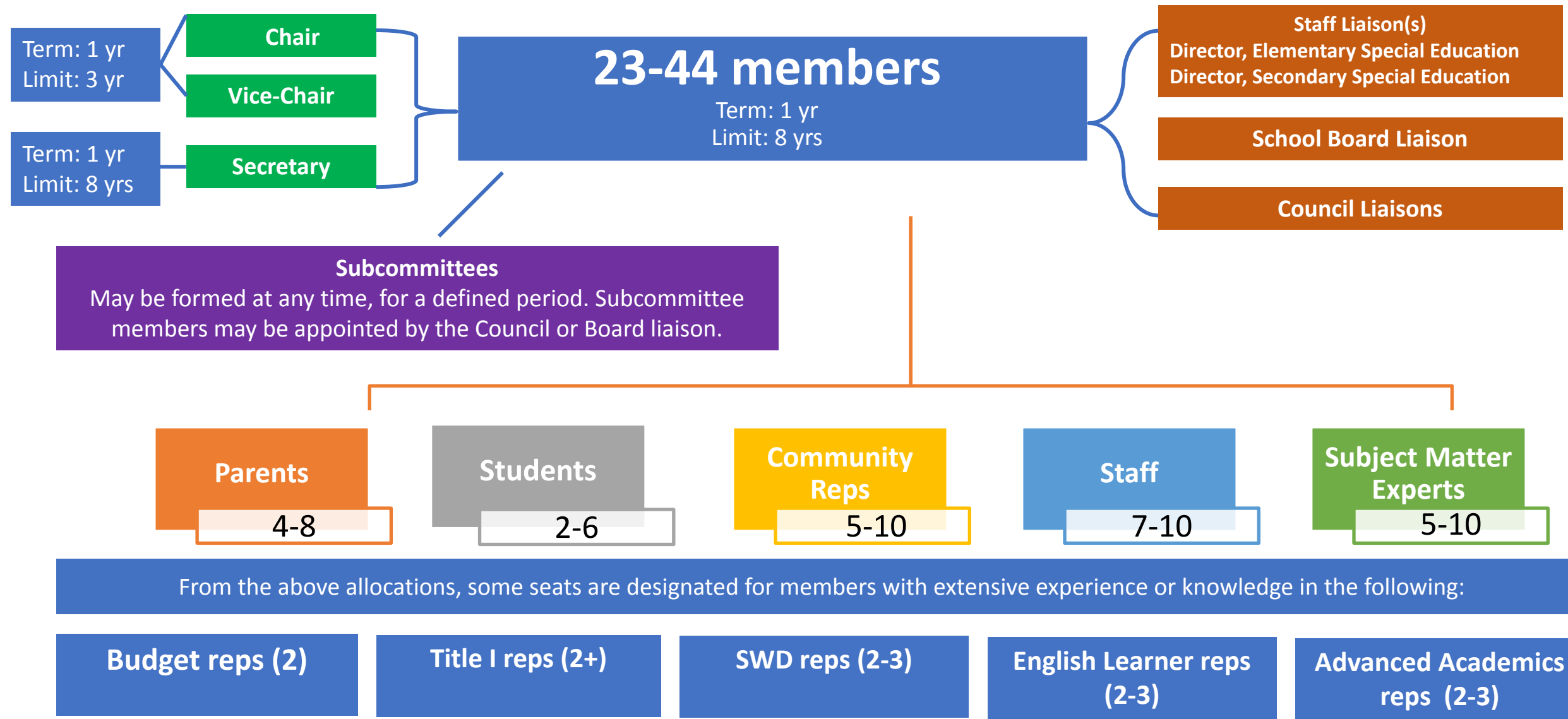


Parents	Students	Community Reps	Staff	Subject Matter Experts
<p><b>Min 6 - Max 11</b></p> <p>Include mix of:</p> <ul style="list-style-type: none"> <li>- school levels</li> <li>- neighborhood &amp; option schools</li> <li>- geographic diversity</li> </ul> <p><i>Aim for a least a third of seats to be filled with parents from Title I schools</i></p>	<p><b>Min 0 - Max 4</b></p> <p>Include mix of:</p> <ul style="list-style-type: none"> <li>- neighborhood &amp; option schools</li> <li>- geographic diversity</li> </ul>	<p><b>Min 0 - Max 4</b></p> <p>Must be Arlington residents</p>	<p><b>Min 3 - Max 9</b></p> <p><b>Facilities &amp; Operations: 1-2</b></p> <p><b>Information services: 1-2</b></p> <p><b>School-based: 1-3</b></p> <p><b>Central Office (non-supervisory): 0-2</b></p> <p>Include mix of: T-Scale, school administrators and staff across scales. Note that bus drivers are considered school-based.</p>	<p><b>Min 1 - Max 4</b></p> <p>Individuals with professional expertise, especially</p> <ul style="list-style-type: none"> <li>- Former teaches, staff, admin</li> <li>- IT professionals</li> <li>- Facility management professionals</li> <li>- Construction specialists</li> </ul>

**Budget Reps (2)** - Budget reps can be a parent, community member or subject matter expert

**Title I reps (2)** - At least one parent seat and the staff seat are designated for reps from a Title I school

**SWD (2-3), English Learner reps (1-2) & Advanced Academic reps (0-1)** -at least one rep from must be a parent of current or former student who receive(d) Special Education services, are (were) English Learners or in Advanced Academics.



Parents	Students	Community Reps	Staff	Subject Matter Experts
<p>Min 4 - Max 8</p> <p>Include mix of:</p> <ul style="list-style-type: none"> <li>- school levels</li> <li>- neighborhood &amp; option schools</li> <li>- geographic diversity</li> </ul> <p><b>**Community Reps &amp; SME may also be APS parents</b></p>	<p>Min 2 - Max 6</p> <p>Include mix of:</p> <ul style="list-style-type: none"> <li>- neighborhood &amp; option schools</li> <li>- geographic diversity</li> <li>-balance of gender, race/ethnicity</li> <li>-special populations</li> </ul>	<p>Min 5 - Max 10</p> <p>In particular, recruit:</p> <ul style="list-style-type: none"> <li>- Current instructors, staff, administrators connected to CTE programs at regional schools of higher ed (NOVA, GMU, etc.)</li> <li>- Reps from local workforce development boards (e.g. Chamber of Commerce, Arlington Economic Development, Workforce Investment Board)</li> <li>- Reps from range of local and regional businesses or industries aligned to career clusters (e.g. Healthcare, Cyber Security, Business)</li> <li>- Rep from agency serving homeless and at-risk youth</li> </ul>	<p>Min 7 - Max 10</p> <p>Per <u>code</u>:</p> <ul style="list-style-type: none"> <li>-CTE Teacher</li> <li>-Non-CTE</li> <li>-College &amp; Career Counselor</li> <li>-Principal</li> <li>-Central Office Administrator</li> <li>-Instructional Assistant</li> <li>-CTE Supervisor &amp; Specialist</li> </ul>	<p>Min 5 - Max 10</p> <p>Individuals with professional expertise</p>

**Budget Rep (s)** - Budget reps can be a parent, community member or subject matter expert

**Title I reps (2)** - At least one parent seat and the staff seat are designated for reps from a Title I school

**SWD (2-3), English Learner reps (2-3) & Advanced Academic reps (2-3)** -at least one rep from must be a parent of current or former student who receive(d) Special Education services, are (were) English Learners or in Advanced Academics.