

## Executive Summary

Arlington Public Schools (APS) publishes an annual K-12 enrollment projections report covering a 10-year horizon, while maintaining steady PreK allocations for each projected year. APS uses a cohort component model for these projections, analyzing historical student enrollment data alongside county demographic data, including birth rates, migration patterns, and housing trends. These projections support both short- and long-term needs:

- Short-term: Staffing and budgeting for the upcoming school year, and
- Long-term: Identifying Capital planning requirements.

## Key Updates for Fall 2025 Projections

- APS introduced a new descriptive statistical model and updated the seat allocation methodology for the new Grace Hopper Center that opens August 2026.
- Previously, the cohort component model applied a 3-year weighted average across schools. The new approach uses a consistent descriptive statistical model and a 4-year median calculation, eliminating school-by-school judgment and weights. Median calculations help reduce the impact of outliers and unexpected factors.
- Grace Hopper Center seat projections were based on the historic share of Arlington Tech students from the three comprehensive high schools. This share was calculated using a 4-year median, deducted from the high schools, and added to Grace Hopper Center. Details of the methodology are provided under the [Fall Projections Process](#) section.

## Current Enrollment Trends

- [Table 1](#) shows that APS' K-12 enrollment decreased marginally by 1.3% from the previous year.
- Elementary schools: Declined by 2.6% ([Table 2](#))
- Middle schools: Increased by 2.0% ([Table 3](#))
- High schools: Declined by 1.8% ([Table 4](#))
- Over the past four years (Fall 2021–2024, [Table 5](#)), median growth rates for enrollment were:
  - Elementary: 0.5%
  - Middle: 1.6%
  - High: 1.2%

These tables are informative as they offer detailed insights by school level, potentially highlighting trends that may not be apparent at the division level.

### Future Projections

For next school year, APS expects slow growth of 0.4%. The five-year projection for 2030-31 indicates APS anticipates a division wide (grades K-12) decline in growth of 0.8%. These are shown in [Table 6](#). School level projections for next school year and in SY2030-31 are:

- SY2026-27
  - Elementary: Decline by 0.5%
  - Middle: Increase by 0.2%
  - High: Increase by 1.9%
- SY2030-31
  - Elementary: Decline by 5.6%
  - Middle: Decline by 0.1%
  - High school: Increase by 5.9%

*“Percent changes are shown by school level and are not intended to be summed. Each figure represents growth or decline for that level only.”*

APS' K-12 membership enrollment on September 30, 2025, reached 26,675 students, below the historical peak from September 30, 2024, of 27,029 students. [Table 7](#) shows the Historical Fall Enrollment and the Fall 2025 10-Year Projections.

- Secondary schools: Indicate growth followed by gradual decline, driven by large cohorts progressing through the system.
- Elementary schools: Continued decline due to fewer births in Arlington County.

Staff will continue to monitor birth rate and migration trends that may impact future projections.

APS faces a period of moderate stability with shifting dynamics: short-term growth at the secondary level contrasts with long-term declines in elementary enrollment. These trends underscore the importance of flexible planning, particularly in staffing, budgeting, and capital investments. Monitoring birth rates and migration patterns will be critical to maintaining accurate projections and ensuring APS can adapt to demographic changes over the next decade.

## Fall 2025 10-Year, K-12 Enrollment Projections Report

Table 1 – Division Wide (K-12) Enrollment Change SY2000-SY2025

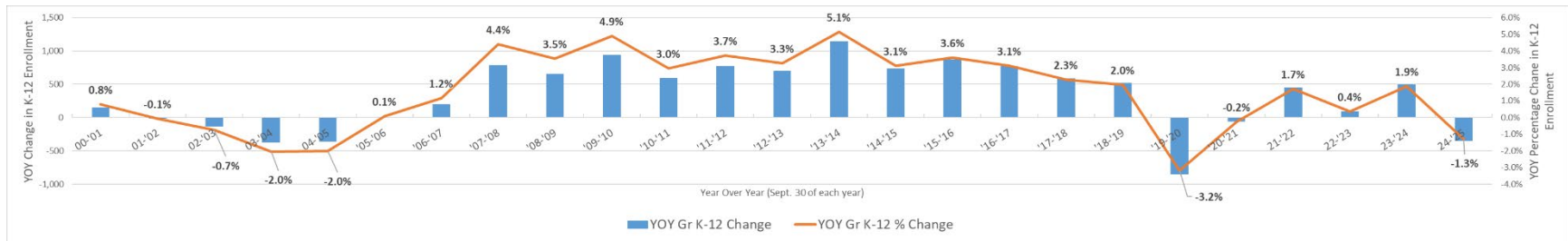


Table 2 – Elementary School Level (K-5) Enrollment Change SY2000-SY2025

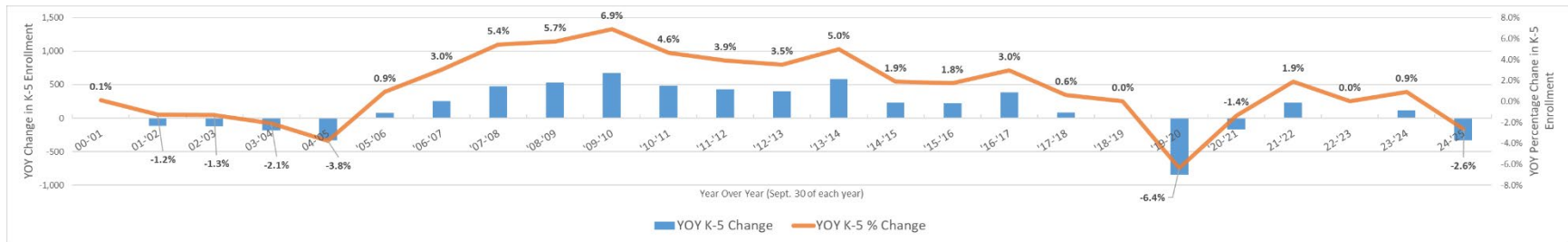
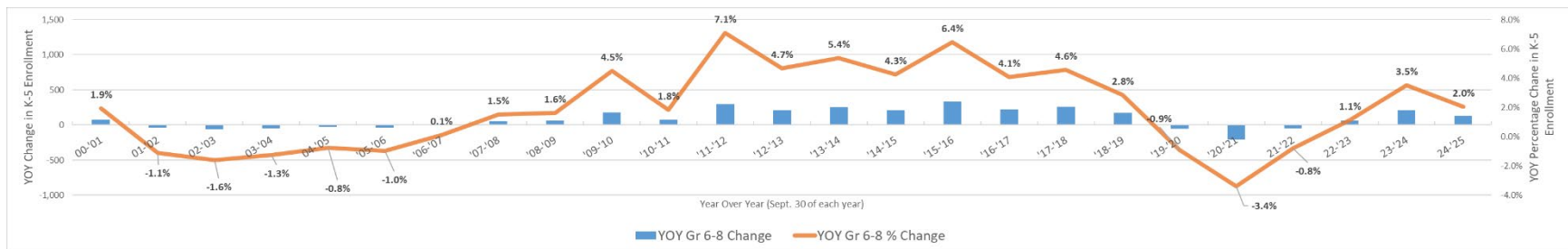


Table 3 – Middle School Level (Gr 6-8) Enrollment Change SY2000-SY2025



## Fall 2025 10-Year, K-12 Enrollment Projections Report

Table 4 – High School Level (Gr 9-12) Enrollment Change SY2000-SY2025

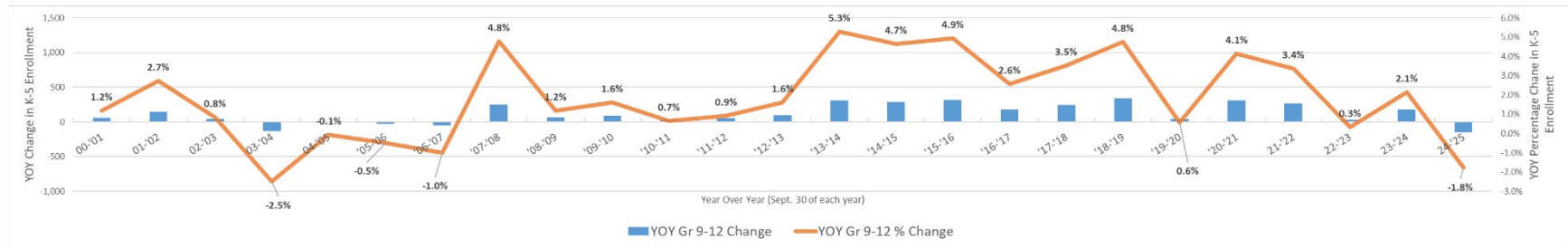


Table 5 – A 4-year Median Rate of Growth Based on Enrollment Change

School Level	4-Year Median Rate of Growth
Elementary (Grades K-5)	0.5%
Middle (Grades 6-8)	1.6%
High (Grades 9-12)	1.2%
Division Wide (Grades K-12)	1.0%

## Fall 2025 10-Year, K-12 Enrollment Projections Report

Table 6 – Fall 2025 Projections: School Level for Next Year and 5-Year Intervals

School Level	Sept. 30, 2025	Projections			Change ('25 to '26)	% Change	Change ('25 to '30)	% Change	Change ('25 to '35)	% Change
		Fall 2026	Fall 2030	Fall 2035						
Elementary	12,270	12,207	11,583	12,020	-63	-0.5%	-687	-5.6%	-250	-2.0%
Middle	6,205	6,219	6,198	5,645	14	0.2%	-7	-0.1%	-560	-9.0%
High	8,200	8,359	8,687	8,085	159	1.9%	487	5.9%	-115	-1.4%
<b>Sub Total (K-12)</b>	<b>26,675</b>	<b>26,785</b>	<b>26,468</b>	<b>25,750</b>	<b>110</b>	<b>0.4%</b>	<b>-207</b>	<b>-0.8%</b>	<b>-925</b>	<b>-3.5%</b>
PreK *	882	1,055	1,055	1,055	173	19.6%	173	19.6%	173	19.6%
<b>Total (PreK-12)</b>	<b>27,557</b>	<b>27,840</b>	<b>27,523</b>	<b>26,805</b>	<b>283</b>	<b>1.0%</b>	<b>-34</b>	<b>-0.1%</b>	<b>-752</b>	<b>-2.7%</b>

\*Notes: Dual enrollees are students who attend APS to receive services but not instruction.

Dual enrollees are excluded from the official September 30 membership summary and projections.

Table 7 – Historical Fall Enrollment and the Fall 2025 10-Year Projections for PreK, K-12 and PreK-12



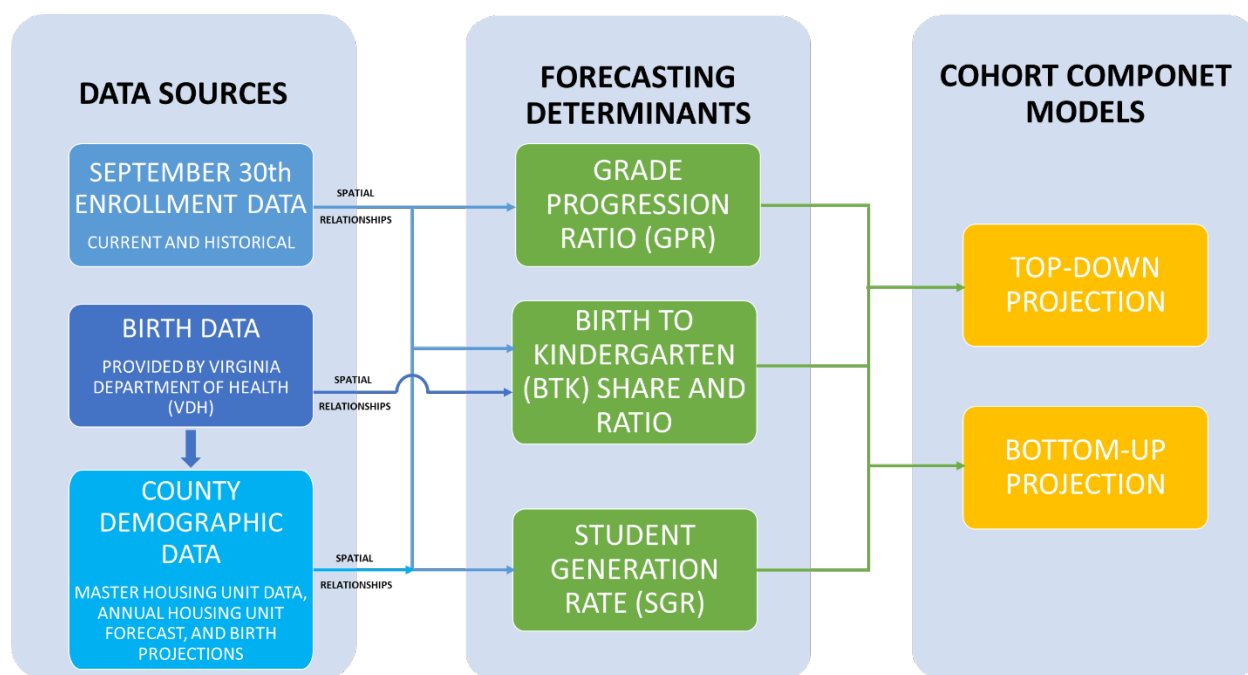
Dual enrollees are students who attend APS to receive services but not instruction.

Dual enrollees are excluded from the official September 30 membership summary and projections.

## Fall Projections Process

The steps described below detail the Fall Projections Process using the three data sources as shown in Figure 1. Staff use these data sources to calculate forecasting determinants including the grade progression ratio (GPR), the birth to kindergarten (BTK) share, the birth to kindergarten (BTK) ratio, and the student generation rate (SGR). These determinants are used in the cohort component models.

Figure 1 – Projections Flow Chart



### Step 1: Gather and Review Data

Staff use data from three sources to support the projection process: September 30<sup>th</sup> enrollment data (current and historical), birth data (current and historical), and Arlington County housing data, housing forecasts, and birth forecasts.

#### a. September 30<sup>th</sup> Enrollment Data

The official September 30<sup>th</sup> enrollment data is used to establish a spatial relationship between the enrolled students, their home address and neighborhood attendance boundary. This provides a visual representation of all students that reside within Arlington County for the current school year.

## b. Birth Data

APS receives birth data from the Virginia Department of Health (VDH) and reviews the data to ensure addresses are valid within Arlington County. The valid birth data is used to form a spatial relationship with APS neighborhood attendance boundaries. APS shares the aggregated and suppressed birth data with Arlington County Government (ACG).

## c. Arlington County Demographic Data

Once the County receives the aggregated and suppressed birth data, they forecast future births and provide a complete data set to APS that includes:

- Master Housing Unit Data (MHUD),
- Single Family Under Construction (SFUC),
- Annual Housing Unit Forecast (AHUF), and,
- Actual and forecasted births.

## Step 2: Calculate Forecasting Determinants

Once the data sources have been received, reviewed, and spatial relationships are established (geocoded), APS begins analyzing the data to calculate four (4) forecasting determinants (ratios).

### a. Grade Progression Ratio (GPR)

- The GPR uses actual enrollment data by grade level to estimate the proportion of students expected to progress to the next school level.
- The steps include calculating the GPR by grade for the current school year and then calculating the 4-year median GPR based on the September 30<sup>th</sup> enrollment data from:
  - Current year
  - Last year
  - Two years prior
  - Three years prior
- **Output:** 4-year median GPR per grade.

### b. Birth to Kindergarten (BTK) Ratio and Share

- The BTK Share is calculated by taking the aggregated births five years prior to the current school year (e.g., it would be the births in 2020 for this school year) associated with each neighborhood elementary attendance boundary divided by the overall births in the County.

$$BTK\ Share = \frac{2020\ Births\ Geocoded\ to\ Neighborhood\ Elementary\ Schools}{Total\ number\ of\ 2020\ Births\ Geocoded\ to\ Arlington\ County}$$

- The BTK Ratio is determined by comparing the current September 30<sup>th</sup> kindergarten enrollment membership per neighborhood elementary attendance boundary with births from five years prior for the same neighborhood elementary attendance boundary.

$$BTK\ Ratio = \frac{2025\ Neighborhood\ Kindergarten\ Students}{2020\ Births\ Geocoded\ to\ Neighborhood\ Elementary\ Schools}$$

- 4-year medians for the BTK Share and the BTK Ratio are calculated using data that occur five, six, seven and eight years prior to the current enrollment year.
- **Output:** Projected Kindergartens for the 10-Year Horizon
  - Apply the BTK 4-year median share and ratio determinants to actual births for years one through four and forecasted births for years six through ten.
  - Add the number of kindergarten option students from the current September 30<sup>th</sup> membership enrollment summary.

### c. Student Generate Rates (SGR)

- The SGR uses the previously geocoded September 30<sup>th</sup> enrollment data and associates it with the County's MHUD data to identify housing types with current, enrolled students. This association allows staff to summarize the student yield by housing type and neighborhood attendance boundary for immediate and biennial occupancy.
- SGR is applied to the SFUC and AHUF data provided by ACG to determine the student yield from each housing type.
- **Output:** Student Yield by housing type and neighborhood attendance boundaries.
  - The student yield is summarized by housing type and neighborhood attendance boundaries for immediate and biennial occupancies.

## Step 3: Build Cohort Component Models

### a. Top-Down 10-Year Cohort Component Model (referred to as Countywide)

- Include the projected Kindergartens for the 10-Year Horizon (Output from Step 2b).
- Use the GPR (Output from Step 2a).
- Use the student yield by grade (Output from Step 2c).
- **Output:**
  - Year 1 projection
    - Kindergarten based on the projected kindergarten and



- Grades 1-12 are based on applying the GPR and the student yield by grade to the current year Grades K-11 actual enrollment.
- Year 2 through Year 10 projections use the same approach as Year 1 using data based on the preceding year Grades K-12 projected enrollment.

## b. Bottom-Up 10-Year Cohort Component Model by School Level

### Elementary School Level

The elementary school level bottom-up approach requires calculating a Grade Progression Ratio (GPR) for each elementary school following the same GPR steps above and including neighborhood and targeted transfers per grade from the current school year.

Once a GPR is determined for each elementary school the process for the Bottom-Up model follows the steps below.

- Include the projected Kindergartens for the 10-Year Horizon (Output from Step 2b).
- Use the individual elementary school GPR.
- Use the student yield by grade (Output from Step 2c).
- **Output:**
  - Year 1 projection
    - Kindergarten based on the projected kindergarten and
    - Grades 1-5 are based on applying the GPR and the student yield by grade to the current year Grades K-4 actual enrollment.
  - Year 2 through Year 10 projections use the same approach as Year 1 using data based on the preceding year Grades K-4 projected enrollment.

### Middle School Level

The Middle School Level bottom-up approach requires calculating a Grade Progression Ratio (GPR) for

- Each middle school that includes neighborhood and targeted transfers,
- Incoming Grade 5 students enrolled in Option Schools that continue to Middle School Programs (e.g., Dual Language Immersion -DLI or Montessori), and
- Incoming Grade 5 neighborhood students for each middle school.

The individual Middle School's GPR is calculated in the same manner as the individual Elementary School's GPR that includes the targeted and neighborhood transfers.

Calculating the GPR for incoming Grade 5 students enrolled in Option Schools that continue to Middle School Programs includes:

- Aggregating the Grade 5 Option Schools students that continue to Middle School Programs according to neighborhood middle school attendance boundary,
- Calculating the GPR by grade for the current school year for each Middle School Program, and
- Calculating each Middle School Program's 4-year median GPR based on the September 30<sup>th</sup> enrollment data from:
  - Current year
  - Last year
  - Two years prior
  - Three years prior

Calculating the GPR for incoming Grade 5 neighborhood students requires looking at the first 5-year interval and the last 5-year interval separately.

- First 5-Year Interval:
  - Aggregate current students by grade level (K-4) and by middle school attendance boundary. Note, in five years, a current kindergarten student will be in grade 5.
  - Apply the countywide GPR (Output from step 2a) to generate the first five-year incoming grade 5 students.
- Last 5-Year Interval:
  - Identify the current number of kindergarten students by middle school attendance boundary.
  - Calculate the kindergarten share by middle school boundaries.
  - Use the kindergarten share per middle school to the projected kindergarten students. Note, in five years, a kindergarten student is projected to be in grade 5.
  - Use the countywide GPR (Output from step 2a) to obtain the last five-year incoming grade 5 students.

These calculations are required to feed the bottom-up model at the Middle School Level. Once the GPRs have been determined, the bottom-up model for the middle school level follows the steps below.

- Use the GPR for incoming Grade 5 neighborhood students for individual middle schools.

- Use the GPR for incoming Grade 5 students in Option Schools that continue to Middle School Programs (e.g., DLI and Montessori).
- Use the individual middle school GPR for Grades 6-7.
- Use the student yield by grade (Output from Step 2c).
- **Output:**
  - Year 1 projection
    - Grade 6 is based on incoming Grade 5 students.
    - Grades 7 and 8 are based on the current year Grades 6 and 7 enrollments.
  - Year 2 through Year 10 projections for Grade 6 are based on the incoming grade 5 students. Grades 7 and 8 are based on the preceding year grades 6 and 7 projected enrollment.

### High School Level

The High School Level bottom-up approach requires calculating a Grade Progression Ratio (GPR) for

- Each high school that includes neighborhood and targeted transfers,
- Incoming Grade 8 students enrolled in Option Programs that continue to a High School Program (e.g., Dual Language Immersion -DLI), and
- Incoming Grade 8 neighborhood students for each high school.

The GPR calculation for each high school and for the incoming Grade 8 students enrolled in high school programs follow the same process as the middle school approach. Calculating the incoming Grade 8 neighborhood students requires looking at students at two different intervals below.

- **First 8-Year Interval:**
  - Aggregate the current students by grade level (K-7) and by high school attendance boundary. Note, in eight years, a current kindergarten student will be in Grade 8.
  - Use the countywide GPR (Output from step 2a) to generate the first eight-year incoming grade 8 students.
- **Last 2-Year Interval:**
  - Identify the number of current kindergartens by high school attendance boundary.
  - Calculate kindergarten share by high school boundary.

- Use the kindergarten share per high school to the projected kindergarten students. Note, in eight years, a current kindergarten student is projected to be in grade 8.
- Use the countywide GPR (Output from step 2a) to generate the last two-year incoming grade 8 students.

These calculations are required to feed the bottom-up model at the High School Level. Once the GPRs have been determined, the bottom-up model for the High School Level follows the steps below.

- Use the GPR for incoming Grade 8 neighborhood students for individual high schools,
- Use the GPR for incoming Grade 8 high school programs,
- Use the individual high school GPR for Grades 9-11.
- Use the student yield by grade (Output from Step 2c),
- **Output:**
  - Year 1 projection
    - Grade 9 is based on incoming Grade 8 students.
    - Grades 10-12 are based on the current year Grades 9-11 enrollments.
  - Year 2 through Year 10 projections for Grade 9 are based on the incoming grade 8 students. Grades 10-12 are based on the preceding year grades 9-11 projected enrollment.

### **Grace Hopper Center Seat Allocations for incoming Grade 9 in SY2026-27**

- Step 1: Calculate the percentage share of students from each of the 3 neighborhood high schools that attend Arlington Tech based on a 4-year median.
- Step 2: Determine the number of seats allocated at the 9th grade entry point for the Arlington Tech program to reach a peak capacity of 97% by 2030.
- Step 3: Apply the percentage share to the number of seats identified in Step 2 for each neighborhood high school.
- Step 4: Total seat allocations for the three other programs at Grace Hopper are equal to or less than 200 seats throughout the 10-year horizon to allow the Grace Hopper Center to reach 97% capacity utilization by 2030.
- Step 5: Reduce the number of 9th grade students calculated in Step 3 from each neighborhood high school.

## Appendix: Fall 2025 Enrollment Projections for 2026 – 2035

All Arlington Public Schools (APS) budget and operations decisions are based on the best information available at the time. Staff and community members are reminded that funding forecasts from Arlington County and the state may change, based on many external factors. Similarly, student enrollment and projections are based on the best available information, but are also subject to change due to employment, migration, housing and other economic factors. For these reasons, APS and the Arlington School Board may adjust future budget allocations, staffing and other operations decisions to reflect the existing community and operating landscape.

**The notes provided below are referenced (superscripted) in the 2026 – 2035 projections tables (Tables 8, 9, 10, 11 & 12)**

1. Five-year-old Montessori students are reported in kindergarten.
2. Does not include community-based students who are registered at their home schools as dual-enrollees.
3. PreK SPED classes are in Integration Station as placeholders for the upcoming Fiscal Year. Integration Station is housed outside of APS with community PreK partners.
4. Schools that accept enrollment through a lottery process can also include students from the Secondary Program for Students with Autism (Grade 6 to 12) and H.S. HILT students (English Learners) enter through the year (Grade 9 to 12). H-B Woodlawn is an example of such a school.
5. Grace Hopper Center full-time students include Arlington Tech, English Learner Institute, the Academy, & Program for Employment Preparedness (PEP) according to the Grace Hopper Educational Specifications approved on April 28, 2022. Part-time students are included at their neighborhood school.
6. Langston and Arlington Community membership does not include students over 20 years old. The above projections do not include the adult students at Arlington Community and at Langston.
7. The incoming K enrollment for elementary option school/programs are the same as the K enrollment in the Spring 2025 Enrollment Management Plan.

# Fall 2025 10-Year, K-12 Enrollment Projections Report

## Table 8 – Enrollment Projection for 2026-27 (Grades K to 12)

	Enrollment Projection: Grade K to 12													Grade K-12 Total	2026-27 School Year Estimate: PreK						Total
	K	1	2	3	4	5	6	7	8	9	10	11	12		VPI	PreK SPED	3&4 Mont	Dual Enrl	Comm Peers	PreK Total <sup>2</sup>	
<b>ELEMENTARY SCHOOL</b>																					
Abingdon Elementary School	99	92	117	112	120	146								686	16	8				24	710
Alice West Fleet Elementary School	85	91	85	83	105	92								541	16	7	32		7	62	603
Arlington Science Focus Elementary	88	83	107	105	102	105								590							590
Arlington Traditional Elementary <sup>7</sup>	96	94	95	95	93	119								592	32					32	624
Ashlawn Elementary School	71	69	96	79	93	99								507	16	16				32	539
Barcroft Elementary School	70	51	65	92	76	73								427	16	15			7	38	465
Barrett Elementary School	62	57	68	67	76	69								399	26	22				48	447
Campbell Elementary School <sup>7</sup>	72	63	68	59	63	64								389	32					32	421
Cardinal Elementary School	95	108	94	126	139	128								690							690
Carlin Springs Elementary School	65	49	72	78	81	97								442	32	30			18	80	522
Claremont Elementary School <sup>7</sup>	96	93	91	85	82	74								521	32					32	553
Discovery Elementary School	66	61	85	72	79	76								439		8	24			32	471
Dr. Charles R. Drew Elementary School	53	51	68	60	69	64								365	26	44			14	84	449
Escuela Key Elementary School <sup>7</sup>	96	96	87	85	82	87								533	32					32	565
Glebe Elementary School	79	88	112	85	91	106								561		7			7	14	575
Hoffman-Boston Elementary School	84	83	84	82	94	107								534	26	15			7	48	582
Innovation Elementary School	72	84	78	77	98	87								496	32	14			14	60	556
Jamestown Elementary School	65	53	79	69	69	91								426		16	16		3	35	461
Long Branch Elementary School	60	75	64	77	74	68								418	16	22				38	456
Montessori Public School of Arlington <sup>1,7</sup>	49	75	75	75	75	75								424		8	104			112	536
Nottingham Elementary School	45	47	50	54	63	73								332		14			14	28	360
Oakridge Elementary School	96	72	95	107	95	98								563	16	8	16			40	603
Randolph Elementary School	60	71	67	58	78	66								400	26	16				42	442
Taylor Elementary School	66	80	73	84	99	81								483		21			7	28	511
Tuckahoe Elementary School	67	80	75	70	78	79								449		14			14	28	477
Integration Station <sup>3</sup>														0		54				54	54
<b>Elementary School Subtotal</b>	<b>1,857</b>	<b>1,866</b>	<b>2,050</b>	<b>2,036</b>	<b>2,174</b>	<b>2,224</b>	<b>-</b>	<b>-</b>	<b>-</b>	<b>-</b>	<b>-</b>	<b>-</b>	<b>-</b>	<b>12,207</b>	<b>392</b>	<b>359</b>	<b>192</b>	<b>0</b>	<b>112</b>	<b>1,055</b>	<b>13,262</b>
<b>MIDDLE SCHOOL<sup>4</sup></b>																					
Dorothy Hamm Middle School						346	331	346						1,023							1,023
Eunice Kennedy Shriver Program						3	3	3						9							9
Gunston Middle School						405	347	315						1,067							1,067
H-B Woodlawn Secondary Program						80	80	80						240							240
Jefferson Middle School						385	376	353						1,114							1,114
Kenmore Middle School						319	321	335						975							975
Swanson Middle School						317	293	305						915							915
Williamsburg Middle School						269	304	303						876							876
<b>Middle School Subtotal</b>	<b>-</b>	<b>-</b>	<b>-</b>	<b>-</b>	<b>-</b>	<b>-</b>	<b>2,124</b>	<b>2,055</b>	<b>2,040</b>	<b>-</b>	<b>-</b>	<b>-</b>	<b>-</b>	<b>6,219</b>							<b>6,219</b>
<b>HIGH SCHOOL<sup>4</sup></b>																					
Arlington Community High School <sup>6</sup>										3	19	25	35	82							82
Eunice Kennedy Shriver Program										7	7	7	18	39							39
Grace Hopper Center (Full-Time) <sup>5</sup>						283	172	148	199					802							802
H-B Woodlawn Secondary Program						115	115	115	115					460							460
Langston High School Continuation <sup>6</sup>						0	5	10	45					60							60
New Directions Program						0	5	6	11					22							22
Wakefield High School						534	553	473	516					2,076							2,076
Washington-Liberty High School						603	654	671	676					2,604							2,604
Yorktown High School						537	573	585	519					2,214							2,214
<b>High School Subtotal</b>	<b>-</b>	<b>-</b>	<b>-</b>	<b>-</b>	<b>-</b>	<b>-</b>	<b>-</b>	<b>-</b>	<b>-</b>	<b>2,082</b>	<b>2,103</b>	<b>2,040</b>	<b>2,134</b>	<b>8,359</b>							<b>8,359</b>
<b>Total (Grade K to Grade 12)</b>	<b>1,857</b>	<b>1,866</b>	<b>2,050</b>	<b>2,036</b>	<b>2,174</b>	<b>2,224</b>	<b>2,124</b>	<b>2,055</b>	<b>2,040</b>	<b>2,082</b>	<b>2,103</b>	<b>2,040</b>	<b>2,134</b>	<b>26,785</b>							
<b>Total (PreK to Grade 12)</b>	<b>1,857</b>	<b>1,866</b>	<b>2,050</b>	<b>2,036</b>	<b>2,174</b>	<b>2,224</b>	<b>2,124</b>	<b>2,055</b>	<b>2,040</b>	<b>2,082</b>	<b>2,103</b>	<b>2,040</b>	<b>2,134</b>	<b>26,785</b>	<b>392</b>	<b>359</b>	<b>192</b>	<b>0</b>	<b>112</b>	<b>1,055</b>	<b>27,840</b>

Table Notes

# Fall 2025 10-Year, K-12 Enrollment Projections Report

## Table 9 – Enrollment Projection for 2027-28 (Grades K to 12)

	Enrollment Projection: Grade K to 12														2026-27 School Year Estimate: PreK						Total
	K	1	2	3	4	5	6	7	8	9	10	11	12	Grade K-12 Total	VPI	PreK SPED	3&4 Mont	Dual Enrl	Comm Peers	PreK Total <sup>2</sup>	
ELEMENTARY SCHOOL																					
Abingdon Elementary School	98	103	93	112	114	123								643	16	8				24	667
Alice West Fleet Elementary School	83	80	92	87	86	106								534	16	7	32		7	62	596
Arlington Science Focus Elementary	87	94	91	115	108	103								598							598
Arlington Traditional Elementary <sup>7</sup>	96	95	94	94	95	93								567	32					32	599
Ashlawn Elementary School	70	73	69	97	80	90								479	16	16				32	511
Barcroft Elementary School	69	69	52	68	91	83								432	16	15			7	38	470
Barrett Elementary School	61	62	57	68	66	75								389	26	22				48	437
Campbell Elementary School <sup>7</sup>	72	68	64	68	59	62								393	32					32	425
Cardinal Elementary School	94	105	114	95	126	141								675							675
Carlin Springs Elementary School	64	62	49	71	82	82								410	32	30			18	80	490
Claremont Elementary School <sup>7</sup>	96	95	91	85	81	76								524	32					32	556
Discovery Elementary School	65	70	61	85	74	82								437		8	24			32	469
Dr. Charles R. Drew Elementary School	53	56	52	64	61	63								349	26	44			14	84	433
Escuela Key Elementary School <sup>7</sup>	96	96	91	79	80	80								522	32					32	554
Glebe Elementary School	78	83	98	115	82	97								553		7			7	14	567
Hoffman-Boston Elementary School	82	78	85	85	86	95								511	26	15			7	48	559
Innovation Elementary School	73	77	90	83	81	101								505	32	14			14	60	565
Jamestown Elementary School	64	64	53	84	69	72								406		16	16		3	35	441
Long Branch Elementary School	59	63	76	63	79	72								412	16	22				38	450
Montessori Public School of Arlington <sup>1,7</sup>	49	75	75	75	75	75								424		8	104			112	536
Nottingham Elementary School	45	47	49	49	59	65								314		14			14	28	342
Oakridge Elementary School	94	93	70	99	108	93								557	16	8	16			40	597
Randolph Elementary School	59	66	72	67	58	75								397	26	16				42	439
Taylor Elementary School	65	73	83	78	83	100								482		21			7	28	510
Tuckahoe Elementary School	66	69	81	79	73	76								444		14			14	28	472
Integration Station <sup>3</sup>														0		54				54	54
Elementary School Subtotal	1,838	1,916	1,902	2,065	2,056	2,180	-	-	-	-	-	-	-	11,957	392	359	192	0	112	1,055	13,012
MIDDLE SCHOOL <sup>4</sup>																					
Dorothy Hamm Middle School							331	361	349					1,041							1,041
Eunice Kennedy Shriver Program							3	3	3					9							9
Gunston Middle School							389	375	330					1,094							1,094
H-B Woodlawn Secondary Program							80	80	80					240							240
Jefferson Middle School							379	404	384					1,167							1,167
Kenmore Middle School							341	323	320					984							984
Swanson Middle School							346	312	290					948							948
Williamsburg Middle School							281	269	316					866							866
Middle School Subtotal	-	-	-	-	-	-	2,150	2,127	2,072	-	-	-	-	6,349							6,349
HIGH SCHOOL <sup>4</sup>																					
Arlington Community High School <sup>6</sup>										3	19	25	35	82							82
Eunice Kennedy Shriver Program										7	7	7	18	39							39
Grace Hopper Center (Full-Time) <sup>5</sup>							308	265	165				210	948							948
H-B Woodlawn Secondary Program							115	115	115				115	460							460
Langston High School Continuation <sup>6</sup>							0	5	10				45	60							60
New Directions Program							0	5	6				11	22							22
Wakefield High School							540	527	541				446	2,054							2,054
Washington-Liberty High School							647	655	626				648	2,576							2,576
Yorktown High School							502	555	558				581	2,196							2,196
High School Subtotal	-	-	-	-	-	-	-	-	-	2,122	2,153	2,053	2,109	8,437							8,437
Total (Grade K to Grade 12)																					
	1,838	1,916	1,902	2,065	2,056	2,180	2,150	2,127	2,072	2,122	2,153	2,053	2,109	26,743							
Total (PreK to Grade 12)																					
	1,838	1,916	1,902	2,065	2,056	2,180	2,150	2,127	2,072	2,122	2,153	2,053	2,109	26,743	392	359	192	0	112	1,055	27,798

Table Notes

# Fall 2025 10-Year, K-12 Enrollment Projections Report

## Table 10 – Enrollment Projection for 2028-29 (Grades K to 12)

	Enrollment Projection: Grade K to 12														2026-27 School Year Estimate: PreK						Total
	K	1	2	3	4	5	6	7	8	9	10	11	12	Grade K-12 Total	VPI	PreK SPED	3&4 Mont	Dual Enrl	Comm Peers	PreK Total <sup>2</sup>	
ELEMENTARY SCHOOL																					
Abingdon Elementary School	91	102	105	89	114	117								618	16	8				24	642
Alice West Fleet Elementary School	78	78	81	94	90	86								507	16	7	32		7	62	569
Arlington Science Focus Elementary	82	93	103	97	117	109								601							601
Arlington Traditional Elementary <sup>7</sup>	96	95	95	93	94	94								567	32					32	599
Ashlawn Elementary School	65	72	74	70	98	78								457	16	16				32	489
Barcroft Elementary School	64	68	70	55	68	100								425	16	15			7	38	463
Barrett Elementary School	58	62	62	57	67	65								371	26	22				48	419
Campbell Elementary School <sup>7</sup>	72	68	69	64	67	58								398	32					32	430
Cardinal Elementary School	88	104	110	115	95	128								640							640
Carlin Springs Elementary School	60	61	62	48	75	83								389	32	30			18	80	469
Claremont Elementary School <sup>7</sup>	96	95	93	84	81	74								523	32					32	555
Discovery Elementary School	61	69	70	62	87	76								425		8	24			32	457
Dr. Charles R. Drew Elementary School	49	56	56	49	66	56								332	26	44			14	84	416
Escuela Key Elementary School <sup>7</sup>	96	96	91	83	74	77								517	32					32	549
Glebe Elementary School	73	82	92	101	111	87								546		7			7	14	560
Hoffman-Boston Elementary School	77	77	80	86	90	87								497	26	15			7	48	545
Innovation Elementary School	72	79	83	96	87	84								501	32	14			14	60	561
Jamestown Elementary School	60	63	64	56	83	72								398		16	16		3	35	433
Long Branch Elementary School	56	62	63	75	65	76								397	16	22				38	435
Montessori Public School of Arlington <sup>1,7</sup>	49	75	75	75	75	75								424		8	104			112	536
Nottingham Elementary School	42	47	50	49	54	61								303		14			14	28	331
Oakridge Elementary School	88	91	90	73	100	107								549	16	8	16			40	589
Randolph Elementary School	55	65	66	73	68	56								383	26	16				42	425
Taylor Elementary School	61	72	76	88	77	84								458		21			7	28	486
Tuckahoe Elementary School	62	68	70	84	82	72								438		14			14	28	466
Integration Station <sup>3</sup>														0		54				54	54
Elementary School Subtotal	1,751	1,900	1,950	1,916	2,085	2,062	-	-	-	-	-	-	-	11,664	392	359	192	0	112	1,055	12,719
MIDDLE SCHOOL <sup>4</sup>																					
Dorothy Hamm Middle School							344	345	381					1,070							1,070
Eunice Kennedy Shriver Program							3	3	3					9							9
Gunston Middle School							387	360	357					1,104							1,104
H-B Woodlawn Secondary Program							80	80	80					240							240
Jefferson Middle School							370	398	413					1,181							1,181
Kenmore Middle School							340	346	322					1,008							1,008
Swanson Middle School							348	340	308					996							996
Williamsburg Middle School							243	281	280					804							804
Middle School Subtotal	-	-	-	-	-	-	2,115	2,153	2,144	-	-	-	-	6,412							6,412
HIGH SCHOOL <sup>4</sup>																					
Arlington Community High School <sup>6</sup>										3	19	25	35	82							82
Eunice Kennedy Shriver Program										7	7	7	18	39							39
Grace Hopper Center (Full-Time) <sup>5</sup>										308	288	252	225	1,073							1,073
H-B Woodlawn Secondary Program										115	115	115	115	460							460
Langston High School Continuation <sup>6</sup>										0	5	10	45	60							60
New Directions Program										0	5	6	11	22							22
Wakefield High School										555	532	515	510	2,112							2,112
Washington-Liberty High School										556	703	626	604	2,489							2,489
Yorktown High School										520	518	540	553	2,131							2,131
High School Subtotal	-	-	-	-	-	-	-	-	-	2,064	2,192	2,096	2,116	8,468							8,468
Total (Grade K to Grade 12)	1,751	1,900	1,950	1,916	2,085	2,062	2,115	2,153	2,144	2,064	2,192	2,096	2,116	26,544							
Total (PreK to Grade 12)	1,751	1,900	1,950	1,916	2,085	2,062	2,115	2,153	2,144	2,064	2,192	2,096	2,116	26,544	392	359	192	0	112	1,055	27,599

Table Notes



# Fall 2025 10-Year, K-12 Enrollment Projections Report

## Table 11 – Enrollment Projection for 2029-30 (Grades K to 12)

	Enrollment Projection: Grade K to 12														2026-27 School Year Estimate: PreK						Total
	K	1	2	3	4	5	6	7	8	9	10	11	12	Grade K-12 Total	VPI	PreK SPED	3&4 Mont	Dual Enrl	Comm Peers	PreK Total <sup>2</sup>	
ELEMENTARY SCHOOL																					
Abingdon Elementary School	95	95	104	100	90	117								601	16	8				24	625
Alice West Fleet Elementary School	81	74	79	83	97	90								504	16	7	32		7	62	566
Arlington Science Focus Elementary	85	88	101	109	99	118								600							600
Arlington Traditional Elementary <sup>7</sup>	96	95	95	94	93	93								566	32					32	598
Ashlawn Elementary School	68	67	73	74	71	96								449	16	16				32	481
Barcroft Elementary School	75	71	76	81	62	82								447	16	15			7	38	485
Barrett Elementary School	60	58	61	62	55	66								362	26	22				48	410
Campbell Elementary School <sup>7</sup>	72	68	69	69	64	66								408	32					32	440
Cardinal Elementary School	91	97	109	112	115	97								621							621
Carlin Springs Elementary School	62	57	61	62	51	76								369	32	30			18	80	449
Claremont Elementary School <sup>7</sup>	96	95	93	86	80	74								524	32					32	556
Discovery Elementary School	63	65	69	71	63	90								421		8	24			32	453
Dr. Charles R. Drew Elementary School	51	51	56	53	51	60								322	26	44			14	84	406
Escuela Key Elementary School <sup>7</sup>	96	96	91	83	78	72								516	32					32	548
Glebe Elementary School	76	77	91	95	97	119								555		7			7	14	569
Hoffman-Boston Elementary School	80	72	78	82	91	91								494	26	15			7	48	542
Innovation Elementary School	74	75	82	86	97	87								501	32	14			14	60	561
Jamestown Elementary School	62	60	63	68	55	87								395		16	16		3	35	430
Long Branch Elementary School	59	60	63	64	78	64								388	16	22				38	426
Montessori Public School of Arlington <sup>1,7</sup>	49	75	75	75	75	75								424		8	104			112	536
Nottingham Elementary School	43	44	50	49	54	56								296		14			14	28	324
Oakridge Elementary School	114	106	109	115	96	120								660	16	8	16			40	700
Randolph Elementary School	57	60	65	67	73	66								388	26	16				42	430
Taylor Elementary School	63	68	75	81	87	78								452		21			7	28	480
Tuckahoe Elementary School	64	64	69	73	88	81								439		14			14	28	467
Integration Station <sup>3</sup>														0		54				54	54
Elementary School Subtotal	1,832	1,838	1,957	1,994	1,960	2,121	-	-	-	-	-	-	-	11,702	392	359	192	0	112	1,055	12,757
MIDDLE SCHOOL <sup>4</sup>																					
Dorothy Hamm Middle School							283	357	362					1,002							1,002
Eunice Kennedy Shriver Program							3	3	3					9							9
Gunston Middle School							395	379	363					1,137							1,137
H-B Woodlawn Secondary Program							80	80	80					240							240
Jefferson Middle School							348	395	413					1,156							1,156
Kenmore Middle School							350	345	345					1,040							1,040
Swanson Middle School							326	343	338					1,007							1,007
Williamsburg Middle School							222	242	292					756							756
Middle School Subtotal	-	-	-	-	-	-	2,007	2,144	2,196	-	-	-	-	6,347							6,347
HIGH SCHOOL <sup>4</sup>																					
Arlington Community High School <sup>6</sup>										3	19	25	35	82							82
Eunice Kennedy Shriver Program										7	7	7	18	39							39
Grace Hopper Center (Full-Time) <sup>5</sup>							333	288	274				305	1,200							1,200
H-B Woodlawn Secondary Program							115	115	115				115	460							460
Langston High School Continuation <sup>6</sup>							0	5	10				45	60							60
New Directions Program							0	5	6				11	22							22
Wakefield High School							583	570	542				507	2,202							2,202
Washington-Liberty High School							625	605	675				608	2,513							2,513
Yorktown High School							473	536	503				534	2,046							2,046
High School Subtotal	-	-	-	-	-	-	-	-	-	2,139	2,150	2,157	2,178	8,624							8,624
Total (Grade K to Grade 12)	1,832	1,838	1,957	1,994	1,960	2,121	2,007	2,144	2,196	2,139	2,150	2,157	2,178	26,673							
Total (PreK to Grade 12)	1,832	1,838	1,957	1,994	1,960	2,121	2,007	2,144	2,196	2,139	2,150	2,157	2,178	26,673	392	359	192	0	112	1,055	27,728

Table Notes

# Fall 2025 10-Year, K-12 Enrollment Projections Report

## Table 12 – Enrollment Projection for 2030-31 (Grades K to 12)

	Enrollment Projection: Grade K to 12														2026-27 School Year Estimate: PreK						Total
	K	1	2	3	4	5	6	7	8	9	10	11	12	Grade K-12 Total	VPI	PreK SPED	3&4 Mont	Dual Enrl	Comm Peers	PreK Total <sup>2</sup>	
ELEMENTARY SCHOOL																					
Abingdon Elementary School	96	99	96	99	102	93								585	16	8				24	609
Alice West Fleet Elementary School	82	77	75	81	86	97								498	16	7	32		7	62	560
Arlington Science Focus Elementary	86	91	96	108	112	100								593							593
Arlington Traditional Elementary <sup>7</sup>	96	95	95	94	94	92								566	32					32	598
Ashlawn Elementary School	69	70	67	73	76	69								424	16	16				32	456
Barcroft Elementary School	76	73	71	80	80	68								448	16	15			7	38	486
Barrett Elementary School	61	60	57	61	60	55								354	26	22				48	402
Campbell Elementary School <sup>7</sup>	72	68	69	69	69	63								410	32					32	442
Cardinal Elementary School	92	101	102	111	112	117								635							635
Carlin Springs Elementary School	63	59	57	61	65	51								356	32	30			18	80	436
Claremont Elementary School <sup>7</sup>	96	95	93	86	82	74								526	32					32	558
Discovery Elementary School	64	67	65	69	72	65								402		8	24			32	434
Dr. Charles R. Drew Elementary School	54	55	54	55	56	48								322	26	44			14	84	406
Escuela Key Elementary School <sup>7</sup>	96	96	91	83	78	75								519	32					32	551
Glebe Elementary School	77	80	85	94	91	103								530		7			7	14	544
Hoffman-Boston Elementary School	83	76	75	81	88	94								497	26	15			7	48	545
Innovation Elementary School	75	77	78	86	88	98								502	32	14			14	60	562
Jamestown Elementary School	63	62	60	67	67	58								377		16	16		3	35	412
Long Branch Elementary School	60	63	61	64	67	77								392	16	22				38	430
Montessori Public School of Arlington <sup>1,7</sup>	49	75	75	75	75	75								424		8	104			112	536
Nottingham Elementary School	44	45	46	49	54	55								293		14			14	28	321
Oakridge Elementary School	116	110	104	115	118	96								659	16	8	16			40	699
Randolph Elementary School	58	63	61	66	68	71								387	26	16				42	429
Taylor Elementary School	64	70	71	80	80	88								453		21			7	28	481
Tuckahoe Elementary School	65	66	65	72	77	86								431		14			14	28	459
Integration Station <sup>3</sup>														0		54				54	54
Elementary School Subtotal	1,857	1,893	1,869	1,979	2,017	1,968	-	-	-	-	-	-	-	11,583	392	359	192	0	112	1,055	12,638
MIDDLE SCHOOL <sup>4</sup>																					
Dorothy Hamm Middle School							289	295	375					959							959
Eunice Kennedy Shriver Program							3	3	3					9							9
Gunston Middle School							403	369	364					1,136							1,136
H-B Woodlawn Secondary Program							80	80	80					240							240
Jefferson Middle School							365	365	403					1,133							1,133
Kenmore Middle School							322	356	344					1,022							1,022
Swanson Middle School							319	322	341					982							982
Williamsburg Middle School							243	222	252					717							717
Middle School Subtotal	-	-	-	-	-	-	2,024	2,012	2,162	-	-	-	-	6,198							6,198
HIGH SCHOOL <sup>4</sup>																					
Arlington Community High School <sup>6</sup>										3	19	25	35	82							82
Eunice Kennedy Shriver Program										7	7	7	18	39							39
Grace Hopper Center (Full-Time) <sup>5</sup>										308	311	274	325	1,218							1,218
H-B Woodlawn Secondary Program										115	115	115	115	460							460
Langston High School Continuation <sup>6</sup>										0	5	10	45	60							60
New Directions Program										0	5	6	11	22							22
Wakefield High School										601	580	561	515	2,257							2,257
Washington-Liberty High School										619	681	583	654	2,537							2,537
Yorktown High School										506	487	521	498	2,012							2,012
High School Subtotal	-	-	-	-	-	-	-	-	-	2,159	2,210	2,102	2,216	8,687							8,687
Total (Grade K to Grade 12)																					
Total (PreK to Grade 12)	1,857	1,893	1,869	1,979	2,017	1,968	2,024	2,012	2,162	2,159	2,210	2,102	2,216	26,468	392	359	192	0	112	1,055	27,523

Table Notes

## Fall 2025 10-Year, K-12 Enrollment Projections Report

Table 13 – Enrollment Projection for 2031-32 to 2035-36 (Grades K to 12)

	Enrollment Projection: Grade K to 12														2026-27 School Year Estimate: PreK					Total
	K	1	2	3	4	5	6	7	8	9	10	11	12	Grade K-12 Total	VPI	PreK SPED	3&4 Mont	Comm Peers	PreK Total	
2031-32	1,853	1,924	1,934	1,893	2,006	2,031	1,896	2,038	2,034	2,155	2,238	2,161	2,168	26,331	392	359	192	112	1,055	27,386
2032-33	1,861	1,917	1,962	1,954	1,918	2,018	1,921	1,911	2,061	2,018	2,232	2,187	2,221	26,181	392	359	192	112	1,055	27,236
2033-34	1,897	1,936	1,965	1,995	1,992	1,941	1,914	1,942	1,937	2,049	2,101	2,190	2,256	26,115	392	359	192	112	1,055	27,170
2034-35	1,935	1,964	1,977	1,990	2,023	2,002	1,824	1,926	1,962	1,896	2,116	2,052	2,247	25,914	392	359	192	112	1,055	26,969
2035-36	1,964	2,000	2,004	2,001	2,017	2,034	1,867	1,833	1,945	1,944	1,961	2,067	2,113	25,750	392	359	192	112	1,055	26,805