

A stylized illustration of the state of Washington, with its county boundaries outlined in black. A large, white snake with a black head and red-tipped tongue is coiled around the map. The snake's body is decorated with red diamond-shaped patterns. The background is a light blue sky. The title text is in a bold, yellow-green font with a black outline and a drop shadow.

The Washington Area Boards of Education

FY 2026 WABE Guide

November 2025

Table of Contents

Division Superintendents	3	FY 2026 Average Class Size	29
Division Contacts.....	4	FY 2026 Kindergarten Students Per Teacher	30
Alexandria City Public Schools	5	Cost Per Pupil.....	31
Arlington Public Schools	6	FY 2026 Authorized Position Definitions	33
City of Fairfax Public Schools	7	FY 2026 Authorized Positions	34
Fairfax County Public Schools.....	8	FY 2026 School-Based Positions - Details.....	36
Falls Church City Public Schools	9	FY 2026 Salary Information	38
Loudoun County Public Schools	10	Student Demographics	40
Manassas City Public Schools.....	11	SAT Scores	41
Manassas Park City Schools	12	Student Breakfast and Lunch Prices	42
Montgomery County Public Schools	13	Teacher Cost Comparison.....	43
Prince George's County Public Schools.....	14	Salary and Benefits Summary	44
Prince William County Public Schools.....	15	Alexandria City Public Schools.....	44
FY 2025 Actual Enrollment	16	Arlington County Public Schools.....	45
FY 2026 Approved Enrollment.....	17	Fairfax County Public Schools	46
English for Speakers of Other Languages (ESOL) Students.....	18	Falls Church City Public Schools	47
Schools and Centers.....	20	Loudoun County Public Schools.....	48
FY 2025 Actual Special Education Enrollment	21	Manassas City Public Schools	49
FY 2026 Approved Special Education Enrollment.....	22	Manassas Park Public Schools.....	50
FY 2026 Expenditure Data Definitions	23	Prince William County Public Schools	51
FY 2026 Approved Fund Expenditures	24	FY 2026 Compensation Accounts	52
FY 2026 Sources of Revenue	25	Benefit Expense Distribution	53
FY 2026 Local Funding Effort	27	Substitute Teacher Pay Rate.....	54
FY 2026 Approved Staffing Ratios	28		

Division Superintendents

Alexandria City Public Schools

Dr. Melanie Kay-Wyatt
1340 Braddock Place
Alexandria, Virginia 22314
Phone 703-619-8001
Fax 703-619-8091

Falls Church City Public Schools

Dr. Terry Dade
150 S. Washington Street, Suite 400
Falls Church, Virginia 22046
Phone 703-248-5601
Fax 703-248-5613

Manassas Park City Schools

Dr. Melissa Saunders
One Park Center Court, Suite A
Manassas Park, Virginia 20111
Phone 703-335-8850

Arlington Public Schools

Dr. Francisco Duran
2110 Washington Boulevard
Arlington, Virginia 22204
Phone 703-228-8634
Fax 703-228-6188

Loudoun County Public Schools

Dr. Aaron Spence
21000 Education Court
Ashburn, Virginia 20148
Phone 571-252-1020
Fax 571-252-1003

Montgomery County Public Schools

Dr. Thomas Taylor
850 Hungerford Drive
Rockville, Maryland 20850
Phone 240-740-3020
Fax 301-279-3206

City of Fairfax Public Schools

Dr. Dustin Wright
10455 Armstrong Street
Fairfax, Virginia 22030
Phone 703-293-7132

Manassas City Public Schools

Dr. Kevin Newman
8700 Centreville Road, Suite 400
Manassas, Virginia 20110
Phone 571-377-6008
Fax 703-257-8801

Prince George's County Public Schools

Dr. Shawn Joseph (Interim)
14201 School Lane
Upper Marlboro, Maryland 20772
Phone 301-952-6008
Fax 301-627-6576

Fairfax County Public Schools

Dr. Michelle C. Reid
8115 Gatehouse Road
Falls Church, Virginia 22042
Phone 571-423-1010
Fax 571-423-1007

Prince William County Public Schools

Dr. LaTanya D. McDade
14715 Bristow Road
Manassas, Virginia 20112
Phone 703-791-8712
Fax 703-791-7309

Division Contacts

Alexandria City Public Schools

Robert Easley
Phone 703-619-8040
Fax 703-619-8090
E-mail: robert.easley@acps.k12.va.us

Falls Church City Public Schools

Mechelle Coppock
Phone 703-248-5620
Fax 703-248-5613
E-mail: coppockm@fccps.org

Manassas Park City Schools

David Lyon
Phone: 703-335-8850
Email: david.lyon@mpark.net

Arlington Public Schools

Jorge Velazquez
Phone 703-228-6177
E-mail: jorgevelazquez@apsva.us

Loudoun County Public Schools

Casey Jones
Phone 571-252-1250
E-mail: casey.jones@LCPS.org

Montgomery County Public Schools

Robert Reilly
Phone 240-740-3161
Fax 301-279-3206
E-mail: robert_reilly@mcpsmd.org

City of Fairfax Public Schools

Dr. Dustin Wright
Phone 703-293-7132
E-mail: Dustin.Wright@FairfaxVa.gov

Manassas City Public Schools

Taft Kelly
Phone 571-377-6035
Fax 703-257-8825
E-mail: tkelly@mcpsva.org

Prince George's County Public Schools

Dana Estep
Phone 301-952-6099
Fax 301-952-6091
E-mail: dana.estep@pgcps.org

Fairfax County Public Schools

Stacey Schobert
Phone 571-423-3600
Fax 571-423-3607
E-mail: slschobert@fcps.edu

Prince William County Public Schools

Joseph Mondoro
Phone 703-791-6395
Fax 703-791-8752
E-mail: mondorjm@pwcs.edu

Alexandria City Public Schools

- Alexandria City Public Schools (ACPS) serves 16,300 students from more than 118 countries and who speak 127 languages. ACPS has 18 schools, including two middle schools, two K-8 schools, one pre-K school and the internationally recognized Alexandria City High School (ACHS).
- 984 ACHS graduates received their diplomas in 2025, the largest graduating class in ACHS history. The new ACHS graduates plan to attend more than 134 universities, serve in the military, work at a job, take gap years or learn a technical vocation.
- 444 seniors, 37 percent of the Class of 2025, graduated with an Advanced Studies Diploma, the highest percentage of ACHS students to earn an Advanced Studies Diploma.
- The Scholarship Fund of Alexandria (SFA) awarded 215 students scholarships totaling \$700,400 for their first year of college, to be renewed throughout their four years of study, totaling \$2,611,850 in value.
- Twenty Titan athletes signed letters of intent to compete in collegiate athletics in nine sports.
- The Titan Class of 2025 received \$2,000,000 in merit scholarships.
- ACHS had three students, among the more than 16,000 semifinalists, announced as 2025 National Merit® Scholarship Program semifinalists. One was selected as the 2024-25 National Merit Scholarship recipient, earning a \$2,500 scholarship.
- Scholarships were awarded to five ACHS students, two from the Posse Foundation and three from the QuestBridge Scholars.
- ACPS honored 58 seniors as it marked 16 years of AVID programming in ACPS. The Class of 2025 is the twelfth AVID graduating cohort from ACHS. Collectively, over \$6.39 million was awarded to the ACHS AVID Class of 2025 by the SFA. More than 80 percent of the AVID seniors earned at least one scholarship. The class includes recipients of prestigious national scholarships, achieving the "triple crown" with students named as Dell, Posse, and QuestBridge Scholars.
- An ACHS senior was selected as the winner of the Harry F. Byrd Jr. Leadership Award from Virginia's 8th Congressional District.
- ACPS' Family and Community Engagement (FACE) Center was selected as one of the English Empowerment Center Community Partners of the Year. It was recognized for its meaningful partnership which serves Alexandria families.
- ACPS Superintendent Dr. Melanie Kay-Wyatt was named a 2024-25 Virginia Parent Teacher Association "Power Partner of the Year."
- ACPS Department of School and Community Relations was selected for the 2025 Public Relations Society of America Silver Anvil Award of Excellence.
- ACPS was recognized with 17 communications and engagement awards from the National School Public Relations Association.
- The ACPS Teacher of the Year was honored with the Virginia Department of Education 2026 Region Four Virginia Teacher of the Year recognition.
- ACPS' new first net zero ready Douglas MacArthur Elementary School was the recipient of an Alexandria Beautification Award, in the area of architectural design which is the backbone of Alexandria's visual identity, blending historical charm with contemporary vision.

Highlights at a Glance

FY 2026 Cost Per Pupil	\$22,242
Average Teacher Salary	\$95,848

2025 Actual Enrollment

Total Enrollment	16,395
Percent ESOL Enrollment	38.0%
Percent Free/Reduced Price Meal Eligible	46.5%
Percent Special Education Enrollment	12.3%

2026 Approved Enrollment

Number Increase/(Decrease) from 2025 Actual	251
Percent Increase/(Decrease) from 2025 Actual	1.5%

Schools

Elementary	13
Middle	2
Traditional (K-8)	2
Secondary and High Schools	1
Special Education	0
Alternative	2

Sources of Revenue

Local	75.8%
State	19.0%
All Other Sources	5.2%

Authorized Positions

School-Based	90.2%
Nonschool-Based	9.8%

Website: www.acps.k12.va.us

Budget Link: <https://www.acps.k12.va.us/departments/financial-services/budget>

Dr. Melanie Kay-Wyatt
1340 Braddock Place
Alexandria, Virginia 22314

Arlington Public Schools

- In 2025 Niche.com ranks Arlington Public Schools (APS) the #1 best places to teach in the Commonwealth of Virginia and in the Washington, DC area; #2 best school district in Virginia; and #3 best school district in the Washington, DC. Metropolitan area, with 10 schools ranked in the top ten for their level.
- APS is fully accredited by the Virginia Department of Education (VDOE) for the 2024-25 school year.
- U.S. News and World Report released its 2025 list of top schools, including Yorktown, which ranked #11, and Washington-Liberty, which ranked #24 in Virginia high schools; Williamsburg #5 and Dorothy Hamm #26 for middle schools; and Arlington Traditional #25 for elementary schools.
- APS students outscored their peers both nationally and at the state level on SAT and ACT scores and IB Pass Rates.
- APS has more than 220 National Board-Certified Teachers and is in the top 25 nationally for the number of new NBCTs.
- The Class of 2025 has 89 percent continuing with post-secondary. The APS Class of 2025 earned \$97.9 million in scholarships.
- Of the APS graduates, 69 percent earned an advanced degree. The On-Time Graduation Rate was 95 percent in 2025. In APS, 80 percent of teachers have a master's degree. APS had one of Virginia's six awardees for the 2024 Presidential Award for Excellence in Mathematics and Science Teaching from the National Science Foundation on behalf of The White House.
- Two APS schools received the Exemplar School Recognition Award, the highest award given by the Virginia Board of Education for the 2024-2025 school year.

Highlights at a Glance

FY 2026 Cost Per Pupil	\$25,406
------------------------	----------

Average Teacher Salary	\$98,053
------------------------	----------

2025 Actual Enrollment

Total Enrollment	27,868
------------------	--------

Percent ESOL Enrollment	21.6%
-------------------------	-------

Percent Free/Reduced Price Meal Eligible	See note*
--	-----------

Percent Special Education Enrollment	15.3%
--------------------------------------	-------

2026 Approved Enrollment

Number Increase/(Decrease) from 2025 Actual	554
---	-----

Percent Increase/(Decrease) from 2025 Actual	2.0%
--	------

Schools

Elementary	25
------------	----

Middle	6
--------	---

Traditional (K-8)	0
-------------------	---

Secondary and High Schools	5
----------------------------	---

Special Education	2
-------------------	---

Alternative	3
-------------	---

Sources of Revenue

Local	78.6%
-------	-------

State	16.7%
-------	-------

All Other Sources	4.7%
-------------------	------

Authorized Positions

School-Based	91.7%
--------------	-------

Nonschool-Based	8.3%
-----------------	------

*Some schools are participating in the Community Eligibility Provision (CEP) program where all students attending the CEP schools receive meals at no cost. Eligibility data for individual students is not collected at CEP schools. For more information, see APS website <https://www.apsva.us/statistics/free-and-reduced-price-meals> for additional information on actual data listed.

Website: <https://www.apsva.us/>

Budget Link: <https://www.apsva.us/budget/previous-fy-budgets/>

Dr. Francisco Duran
2110 Washington Boulevard
Arlington, Virginia 22204

City of Fairfax Public Schools

- Since 1962, the City of Fairfax School Board has contracted with Fairfax County Public Schools (FCPS) to deliver instructional services through the School Services Agreement. The five-member City School Board owns and maintains the school facilities; FCPS provides instructional programs and staffing.
- City of Fairfax Schools serves approximately 5,000 students in grades PreK–12 across four schools. Roughly 3,000 students reside in the City of Fairfax, with the remainder living in Fairfax County. In 2024, city voters approved a bond referendum by nearly 70 percent to renovate both elementary schools.
- **Programs & Highlights**
 - AVID programming at all four schools
 - STEM/Innovation Labs
 - Outdoor classrooms
 - Local Level IV advanced academic services at both elementary schools
 - Advanced Academic Program (AAP) Center at Katherine Johnson Middle School (KJMS)
 - Virginia Naturally Schools
 - Fairfax Academy for Communications & the Arts is a Career focused academy in subjects such as world languages, dance, theatre, photography, fashion career, music and computer technology, game design, and TV production.
- **Schools**
 - Providence ES (preK-6)
 - Daniels Run ES (preK-6)
 - Katherine Johnson MS (7-8)
 - Fairfax HS (9-12)



Website: [cityoffairfaxschools.org](https://www.cityoffairfaxschools.org)

Budget Link: https://www.cityoffairfaxschools.org/apps/pages/index.jsp?uREC_ID=1662459&type=d&pREC_ID=1812343

Dr. Dustin Wright
10455 Armstrong Street
Fairfax, Virginia 22030

Fairfax County Public Schools

- Fairfax County Public Schools (FCPS) is the nation's 10th largest school division.
- The FCPS Strategic Plan provides a framework for decision-making that builds upon a common mission, vision, and guiding principles held by the community. The *Portrait of a Graduate* is the center of the strategic plan.
- Thomas Jefferson High School for Science and Technology (TJHSST) was ranked fourteenth by U.S. News and World Report in 2024 as the nation's best high school. Additionally, TJHSST was ranked fifth for the best science, technology, engineering, and math (STEM) school. The following FCPS high schools: Langley, McLean, Marshall, Oakton, Madison, and West Springfield were also included in the top 10 schools in Virginia.
- In SY 2024-2025, Sangster Elementary, Thomas Jefferson High School for Science and Technology, and Woodson High School received the Virginia Board of Education Highest Achievement Award. Schools recognized for highest achievement were accredited and demonstrated high levels of success across all school quality indicators, including narrowing of achievement gaps.
- Three FCPS schools: Fairfax County Adult High, Key Center, and West Potomac High earned the 2024-2025 Board of Education Continuous Improvement Award.
- Ninety-seven percent of FCPS schools, compared to 85 percent statewide, earned full state accreditation from the VDOE based on the results from the Virginia SOL tests administered during the 2023-2024 school year.
- In 2025, 191 FCPS students from 19 high schools were named semifinalists, and 13 students from eight FCPS schools were winners in the National Merit Scholarship Program after taking the Preliminary SAT/National Merit Scholarship Qualifying Test.
- FCPS is the largest employer in Fairfax County, with 25,625 full-time employees.
- FCPS operates one of the largest school bus fleets in the United States, with 1,625 buses transporting more than 130,000 students daily over 5,800 routes.
- FCPS has more than 28 million square feet of buildings, 188 of which have been ENERGY STAR certified with over \$100 million in documented energy savings divisionwide.

Highlights at a Glance

FY 2026 Cost Per Pupil	\$21,986
------------------------	----------

Average Teacher Salary	\$94,186
------------------------	----------

2025 Actual Enrollment

Total Enrollment	180,132
------------------	---------

Percent ESOL Enrollment	20.5%
-------------------------	-------

Percent Free/Reduced Price Meal Eligible	36.5%
--	-------

Percent Special Education Enrollment	17.0%
--------------------------------------	-------

2026 Approved Enrollment

Number Increase/(Decrease) from 2025 Actual	959
---	-----

Percent Increase/(Decrease) from 2025 Actual	0.5%
--	------

Schools

Elementary	142
------------	-----

Middle	23
--------	----

Traditional (K-8)	0
-------------------	---

Secondary and High Schools	25
----------------------------	----

Special Education	7
-------------------	---

Alternative	2
-------------	---

Sources of Revenue

Local	67.9%
-------	-------

State	26.5%
-------	-------

All Other Sources	5.5%
-------------------	------

Authorized Positions

School-Based	92.5%
--------------	-------

Nonschool-Based	7.5%
-----------------	------

Website: <https://www.fcps.edu/>

Budget Link: <https://www.fcps.edu/sites/default/files/media/pdf/FY-2026-Approved-Budget.pdf>

Dr. Michelle C. Reid
8115 Gatehouse Road
Falls Church, Virginia 22042

Falls Church City Public Schools

- Falls Church City Public Schools (FCCPS) is a small, independent, city school division established in 1949.
- All five FCCPS schools are fully accredited:
 - Jessie Thackrey (PreK - Special needs preschool program)
 - Mount Daniel Elementary (K-2)
 - Oak Street Elementary (3-5)
 - Mary Ellen Henderson Middle (6-8)
 - Meridian High (9-12)
- FCCPS is one of the few school divisions in the nation to offer The International Baccalaureate (IB) Programme PreK-12 and is an IB Continuum School Division.
- FCCPS consistently scores above state and national averages on standardized tests. Overall FCCPS SOL pass rates for the 2024-2025 school year are:
 - Reading: 92 percent - #1 in Virginia (Fourth consecutive year leading the state.)
 - Math: 89 percent - #2 in Virginia
 - Science: 88 percent - #1 in Virginia (Second year in a row at #1)
 - History: 90 percent - #1 in Virginia (Second year in a row at #1)
- The FCCPS student body is multicultural with students speaking over 30 native languages.
- Historical Accomplishments
 - FCCPS was a pioneer in Virginia school divisions, providing 6 weeks of paid parental leave for employees with a new child (2024).
 - FCCPS was the first Virginia school system to offer the challenging International Baccalaureate curriculum for high school students (1981).
 - FCCPS was one of the first Virginia school systems to develop a before and after-school daycare program for children of working parents (1975).
 - FCCPS was the first Virginia school system to offer full-day kindergarten (1973).
 - FCCPS was the first Virginia school system to voluntarily integrate schools (1961).

Highlights at a Glance

FY 2026 Cost Per Pupil	\$23,988
Average Teacher Salary	\$89,930

2025 Actual Enrollment

Total Enrollment	2,714
Percent ESOL Enrollment	6.7%
Percent Free/Reduced Price Meal Eligible	11.3%
Percent Special Education Enrollment	14.3%

2026 Approved Enrollment

Number Increase/(Decrease) from 2025 Actual	159
Percent Increase/(Decrease) from 2025 Actual	5.9%

Schools

Elementary	2
Middle	1
Traditional (K-8)	0
Secondary and High Schools	1
Special Education	1
Alternative	0

Sources of Revenue

Local	79.8%
State	16.5%
All Other Sources	3.7%

Authorized Positions

School-Based	91.6%
Nonschool-Based	8.4%

Website: www.fccps.org

Budget Link: <https://www.fccps.org/o/fccps/page/fccps-budget>

Dr. Terry Dade
150 S. Washington St, Suite 400
Falls Church, Virginia 22046

Loudoun County Public Schools

- Loudoun County Public Schools (LCPS) is led by Superintendent Dr. Aaron Spence, who conducted the first-ever LCPS Student Success talks, connecting families with LCPS leadership, providing tools for academic, social and emotional student success, and belonging.
- In the 2024-2025 school year, more than 81,000 students were enrolled across 100 schools in LCPS, and the division employed over 13,000 staff. The division's workplace excellence is recognized by Forbes' list of America's Best-in-State Employers, 2024.
- The LCPS Class of 2025 graduated 6,932 seniors, with nearly 75 percent receiving an advanced diploma, almost 24 percent a standard diploma, and just over 1 percent an applied studies diploma. Almost 70 percent of graduates reported they will attend a four-year college, while over 17 percent will attend a two-year school, and 2 percent will enter military service. LCPS has a 97.2 percent on-time graduation rate.
- Niche's Virginia rankings place LCPS as the 4th Best School District and the #1 Best School District for Athletes. Seven high schools are listed in the top 20 in the state, with Independence High School ranked as the #2 best high school in Virginia.
- National Merit Scholarship winners included 18 LCPS students for the 2024-2025 school year. Five students won college-sponsored scholarships, eleven were named National Merit \$2,500 Scholarship winners, and two received corporate-sponsored National Merit Scholarships.
- The Division of Family and Community Engagement launched the LCPS Family Academy – a series of free virtual workshops to help families support their students' academic success and navigate and access school division resources.
- In partnership with the Loudoun Education Foundation and Amazon, LCPS launched four new Think Big Corners at elementary schools, bringing hands-on STEM learning directly to students.
- In collaboration with George Mason University and NOVA, LCPS launched the ACCESS Academy at Potomac Falls High School to provide dual-enrollment credits, IT certifications and real-world learning for students pursuing high-demand tech careers.
- LCPS expanded programming options that care for students' well-being and academic needs. LCPS will support students in early recovery from substance use disorders with a recovery academy offering academic and therapeutic support. Planning is also underway for the Academy of Global and Linguistic Studies, a future-forward program with pathways in Global Leadership and Global Business featuring immersive Arabic and Mandarin instruction.
- The division continues its focus on workforce development and future-ready education, focusing on key industries like cybersecurity, health innovation, and aerospace, by hosting the first LCPS Workforce Summit, bringing together more than 250 community and business leaders.

Highlights at a Glance

FY 2026 Cost Per Pupil	\$23,825
Average Teacher Salary	\$95,792

2025 Actual Enrollment

Total Enrollment	81,694
Percent ESOL Enrollment	14.5%
Percent Free/Reduced Price Meal Eligible	23.4%
Percent Special Education Enrollment	13.2%

2026 Approved Enrollment

Number Increase/(Decrease) from 2025 Actual	-65
Percent Increase/(Decrease) from 2025 Actual	-0.1%

Schools

Elementary	62
Middle	18
Traditional (K-8)	0
Secondary and High Schools	18
Special Education	0
Alternative	4

Sources of Revenue

Local	69.2%
State	28.2%
All Other Sources	2.6%

Authorized Positions

School-Based	91.7%
Nonschool-Based	8.3%

Website: www.lcps.org/

Budget Link: <https://bit.ly/LCPSFY26AdoptedBudget>

Dr. Aaron Spence
21000 Education Court
Ashburn, Virginia 20148

Manassas City Public Schools

- Manassas City Public Schools (MCPS) offers high-quality, student-centered programs that prepare learners for future success through rigorous academics, innovation, and community partnerships.
- Baldwin Elementary School is a Project Lead the Way (PLTW) Distinguished School. Former Baldwin Principal Dr. Laura Goldzung, now at Haydon Elementary, was named the 2021–2022 PLTW National Administrator of the Year. Project Lead the Way is offered in grades 5–12.
- A K–12 Career and Technical Education (CTE) and STEM program is offered in all schools. Osbourn High School programs include Cybersecurity, Engineering, Auto Technology, Cosmetology, and a variety of business courses.
- Osbourn High School serves as a Governor's STEM Academy, the first in the Greater Prince William region, with specialized pathways in Facility and Mobile Equipment Maintenance, Cybersecurity, and Engineering Technology.
- MCPS offers an extensive work-based learning program. In 2023–2024, 91 percent of graduates participated, completing more than 1,100 workforce experiences through business partnerships.
- Over 300 students completed at least one dual enrollment course in 2023–2024, a 66 percent increase since 2021–2022, earning college credit while in high school. Students also have opportunities for advanced STEM study through the Governor's School @ Innovation Park and partnerships with George Mason University and Northern Virginia Community College.
- MCPS increased its on-time graduation rate from 82 percent in 2022 to 90 percent in 2024, reflecting the division's commitment to student success.
- An Integrated Math and Science Program and an Integrated Humanities Program are offered in grades 7–10. Algebra I, Geometry, and World Languages are available at the middle school level for high school credit.
- The Metz Community Garden, led by Adaptive students, cultivates both growth and confidence through hands-on learning.
- A Weems Elementary student earned top honors in Virginia's inaugural VSBA Statewide Art Contest, demonstrating the creativity and talent nurtured in MCPS art programs.
- Osbourn High School is a Grammy Award-winning school and a Virginia Music Educators Association (VMEA) Blue Ribbon Award recipient, recognizing excellence in Band, Orchestra, and Choral performance.
- MCPS offers a three-year mentoring program for new teachers and provides more than \$100,000 annually in tuition reimbursement for staff.
- Small class sizes, averaging 13.6:1 in grades K–7 and 15.4:1 in grades 8–12, allow for focused, individualized instruction.

Highlights at a Glance

FY 2026 Cost Per Pupil	\$18,990
------------------------	----------

Average Teacher Salary	\$90,773
------------------------	----------

2025 Actual Enrollment

Total Enrollment	7,641
------------------	-------

Percent ESOL Enrollment	40.5%
-------------------------	-------

Percent Free/Reduced Price Meal Eligible	See note*
--	-----------

Percent Special Education Enrollment	10.9%
--------------------------------------	-------

2026 Approved Enrollment

Number Increase/(Decrease) from 2025 Actual	229
---	-----

Percent Increase/(Decrease) from 2025 Actual	3.0%
--	------

Schools

Elementary	5
------------	---

Middle	3
--------	---

Traditional (K-8)	0
-------------------	---

Secondary and High Schools	1
----------------------------	---

Special Education	0
-------------------	---

Alternative	0
-------------	---

Sources of Revenue

Local	40.5%
-------	-------

State	55.9%
-------	-------

All Other Sources	3.6%
-------------------	------

Authorized Positions

School-Based	90.5%
--------------	-------

Nonschool-Based	9.5%
-----------------	------

* All MCPS are Community Eligible Provision (CEP) schools and provide breakfast and lunch at no cost.

Website: www.mcpsva.org

Budget Link: <https://www.mcpsva.org/page/budget>

Dr. Kevin Newman
8700 Centreville Road, Suite 400
Manassas, Virginia 20110

Manassas Park City Schools

- MPCS is committed to engaging students through powerful learning experiences!
- A partnership with the Capital Area Food Bank allows MPCS to distribute more than 50,000 pounds of food to families during the school year. Staff members from all four schools, administration, and the City of Manassas Park come together at Manassas Park High School to volunteer their time to organize and distribute food to families.
- Serve the medical needs of the uninsured, MPCS partners with George Mason University and surrounding health care providers to offer the Mason and Partners (MAP) Clinic at the Manassas Park Community Center.
- MPCS continues to train its staff on ALICE – Alert, Lockdown, Inform, Counter, and Evacuate – a set of proactive strategies that moves beyond lockdown and increases the chance of survival during a violent intruder event.
- The Early Identification Program (EIP), in partnership with George Mason University, has approximately 45 MPCS students in the program. It promotes higher education to potential first-generation college students.
- All students grade K-12 are provided opportunities to participate in STEM education. These programs are supported by The BELL Foundation, the education foundation for Manassas Park.
- The city's diversity extends into the school system where students come from 52 countries around the world.
- MPCS participates in the Regional Governor's School @ Innovation Park.
 - Manassas Park High School offers a Certified Nursing Assistant program as part of its Career and Technical Education program. Students can now take a track to graduate with a certificate to become a CNA.
 - Manassas Park City Schools is continually expanding its diverse range of Work-Based Learning opportunities, offering students real-world experiences through initiatives like Coffee with Contractors, Aviation Career Day, Service-Learning projects, and offering EMT experiences.
- Manassas Park City Schools launched a new five-year strategic plan to engage all students in powerful and meaningful learning experiences.
- MPCS has a K-8 curriculum to teach social and emotional learning to all students.
- MPCS recently partnered with the City to install new safety and security upgrades in all school buildings including enhanced security cameras, access controls, and ballistics materials.

Highlights at a Glance

FY 2026 Cost Per Pupil	\$19,257
Average Teacher Salary	\$74,990

2025 Actual Enrollment

Total Enrollment	3,417
Percent ESOL Enrollment	41.5%
Percent Free/Reduced Price Meal Eligible	See note*
Percent Special Education Enrollment	15.4%

2026 Approved Enrollment

Number Increase/(Decrease) from 2025 Actual	-83
Percent Increase/(Decrease) from 2025 Actual	-2.4%

Schools

Elementary	2
Middle	1
Traditional (K-8)	0
Secondary and High Schools	1
Special Education	0
Alternative	0

Sources of Revenue

Local	25.8%
State	69.7%
All Other Sources	4.5%

Authorized Positions

School-Based	89.9%
Nonschool-Based	10.1%

*All MPCS are Community Eligible Provision (CEP) schools and provide breakfast and lunch at no cost.

Website: www.mpark.net

Budget Link: https://cdnsms5-ss20.sharpschool.com/UserFiles/Servers/Server_337027/File/Departments/Financial%20Services/FY26%20Superintendents%20Proposed%20Budget%202.10.25.pdf

Dr. Melissa Saunders
One Park Center Court, Suite A
Manassas Park, Virginia 20111

Montgomery County Public Schools

Montgomery County Public Schools was unable to participate in the FY 2026 WABE Guide.

Website: www.montgomeryschoolsmd.org/

Budget Link: <https://www.montgomeryschoolsmd.org/departments/budget/fy2026/>

Dr. Thomas Taylor
850 Hungerford Drive
Rockville, Maryland 20850

Prince George's County Public Schools

Prince George's County Public Schools was unable to participate in the FY 2026 WABE Guide.

Website: www.pgcps.org

Budget Link: <https://www.pgcps.org/offices/budget-and-management-services/operating-budget>

Dr. Shawn Joseph (Interim)
14201 School Lane
Upper Marlboro, MD 20772

Prince William County Public Schools

- Prince William County Public Schools' (PWCS) preliminary on-time graduation rate for the 2024-2025 school year is 94.8 percent. English learners' graduation rate is 83 percent, and students with disabilities earned a 95.2 percent graduation rate.
- PWCS' overall dropout rate for the 2024-2025 school year was 4.0 percent, down from a high of 6.9 percent in 2023.
- Student attendance is a key component of student academic success. PWCS' chronic absenteeism rate for the 2024-25 school year was reported as 16.4 percent, a 6.7 percent decrease in chronic absenteeism from SY 2021-2022.
- For the 2024-2025 school year, PWCS saw improvements in SOL scores across four of five subjects, surpassing the state's averages in nearly every category.
- Students achieved a 76 pass rate in reading, which is 2 percent above the state average.
- In writing, students scored 79 percent, which is 3 percent higher than the state average.
- History and social sciences scores reached 75 percent, 9 points higher than the state average.
- Math scores were 75 percent, 3 percent higher than the state rate.
- Students scored 72 percent in science, also outperforming the state rates.
- Access to advanced academic coursework has increased to 55.7 percent, and over 27,000 career and technical education credentials have been earned by PWCS students.
- The PWCS class of 2025 earned more than \$159 million in scholarships, a 29.5 percent increase from the year prior.
- The Virginia Department of Wildlife Resources (DWR) recognized 30 PWCS schools as Virginia Naturally Schools for the 2024-25 school year, a 16-school increase from the previous year, leading to the school division having the highest number of recognitions in the state.
- Five PWCS schools were recognized as 2025 America's Healthiest Schools by the Alliance for a Healthier Generation.
- Six PWCS students have been selected as 2026 National Merit® Scholarship Program Semifinalists.
- PWCS Superintendent Dr. LaTanya D. McDade was named one of the 50 Most Influential People of 2025 by Northern Virginia Magazine, her second consecutive year receiving this honor.
- PWCS is ranked by Realtor.com among the most popular choices for families looking to relocate and recognized by Forbes as one of America's Best-In-State Employers for 2025.

Highlights at a Glance

FY 2026 Cost Per Pupil	\$20,223
Average Teacher Salary	\$89,088

2025 Actual Enrollment

Total Enrollment	90,467
Percent ESOL Enrollment	21.9%
Percent Free/Reduced Price Meal Eligible	29.2%
Percent Special Education Enrollment	13.2%

2026 Approved Enrollment

Number Increase/(Decrease) from 2025 Actual	-1,389
Percent Increase/(Decrease) from 2025 Actual	-1.5%

Schools

Elementary	62
Middle	17
Traditional (K-8)	3
Secondary and High Schools	13
Special Education	1
Alternative	1

Sources of Revenue

Local	48.1%
State	46.6%
All Other Sources	5.2%

Authorized Positions

School-Based	90.3%
Nonschool-Based	9.7%

Website: <https://www.pwcs.edu/Index>

Budget Link: https://www.pwcs.edu/departments/budget/budget_updates/Index

Dr. LaTanya D. McDade
14715 Bristow Road
Manassas, Virginia 20112

FY 2025 Actual Enrollment¹

School Division	Preschool	Head Start	Kindergarten	Grades 1-12	Special Education Level 2 (50% or more of the time)	Total Enrollment
Alexandria City²	408	0	1,336	14,169	482	16,395
Arlington County³	839	0	1,890	23,755	1,384	27,868
Fairfax County⁴	3,118	1,973	10,604	149,876	14,561	180,132
Falls Church City	72	0	180	2,384	78	2,714
Loudoun County	873	99	4,911	73,303	2,508	81,694
Manassas City	296	0	552	6,590	203	7,641
Manassas Park City	167	0	236	2,903	111	3,417
Prince William County	1,832	395	5,300	80,182	2,758	90,467

¹ Actual enrollment date used for special education 12/1, Head Start 3/31, and all others 9/30.

² Alexandria City Public Schools preschool regular education includes Preschool Learning Together (PLT). Head Start is a city program, program enrollment is not included in total enrollment. FY 2025 enrollment is an estimate.

³ Arlington Public Schools preschool special education enrollment does not include dual enrolled students or students receiving preschool special education community-based services.

⁴ Fairfax County Public Schools enrollment does not include students served at adult high school, private school, homeschool, or through contract services.

FY 2026 Approved Enrollment

School Division	Preschool	Head Start	Kindergarten	Grades 1-12	Special Education Level 2 (50% or more of the time)	Total Enrollment
Alexandria City¹	405	0	1,366	14,267	608	16,646
Arlington County²	1,055	0	2,023	22,841	2,503	28,422
Fairfax County³	3,714	2,280	10,633	149,494	14,970	181,091
Falls Church City	72	0	190	2,526	85	2,873
Loudoun County	858	100	4,800	73,265	2,606	81,629
Manassas City	350	0	553	6,764	203	7,870
Manassas Park City	167	0	230	2,826	111	3,334
Prince William County	1,680	397	5,614	78,424	2,963	89,078

¹ Alexandria City Public Schools preschool does not include Head Start as it is a city program.

² Arlington Public Schools preschool special education enrollment does not include dual enrolled students or students receiving preschool special education community-based services.

³ Fairfax County Public Schools enrollment does not include students served at adult high school, private school, homeschool, or through contract services.

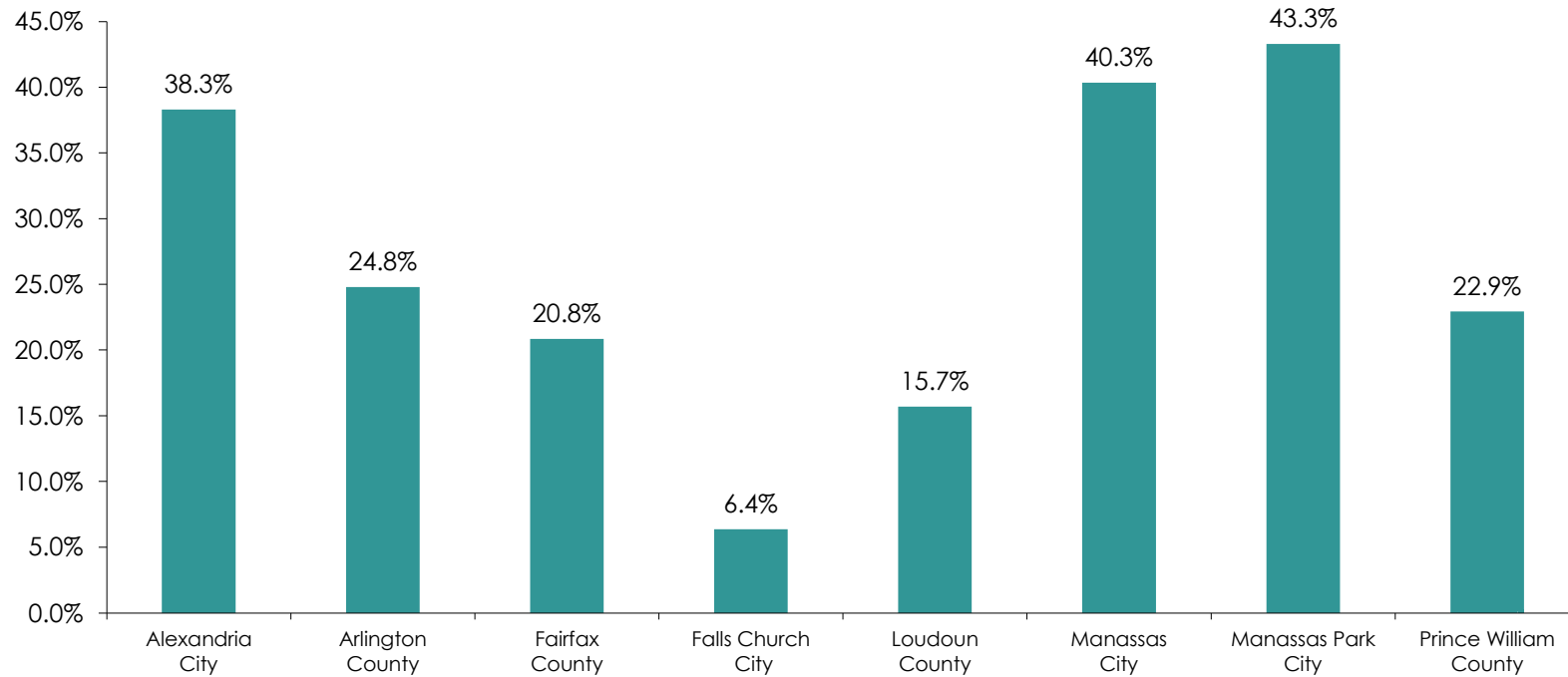
English for Speakers of Other Languages (ESOL) Students¹

School Division	FY 2025 Actual Enrollment	FY 2026 Approved Budget	Percentage of FY 2025 Enrollment	Percentage of FY 2026 Enrollment
Alexandria City	6,236	6,375	38.0%	38.3%
Arlington County	6,012	7,045	21.6%	24.8%
Fairfax County²	36,902	37,742	20.5%	20.8%
Falls Church City	183	183	6.7%	6.4%
Loudoun County	11,815	12,818	14.5%	15.7%
Manassas City	3,098	3,175	40.5%	40.3%
Manassas Park City	1,419	1,443	41.5%	43.3%
Prince William County	19,814	20,435	21.9%	22.9%

¹ Programs for English speakers of other languages use several different names in the WABE districts including English as a Second Language, English for Speakers of Other Languages, and English Language Learners. For the purposes of this document, all such programs are referred to as English for Speakers of Other Languages, and enrollment includes only those students receiving services.

² Fairfax County Public Schools includes students with Levels 1-4 services.

English for Speakers of Other Languages (ESOL) Students



WABE 2026

Schools and Centers

School Division	Elementary	Middle	Traditional (K-8)	Secondary	High	Special Education	Alternative	Total
Alexandria City*	13	2	2	0	1	0	2	20
Arlington County	25	6	0	1	4	2	3	41
Fairfax County	142	23	0	3	22	7	2	199
Falls Church City	2	1	0	0	1	1	0	5
Loudoun County	62	18	0	0	18	0	4	102
Manassas City	5	3	0	0	1	0	0	9
Manassas Park City	2	1	0	0	1	0	0	4
Prince William County	62	17	3	0	13	1	1	97

*Alexandria City Public Schools traditionally includes K-8 Patrick Henry and Prek-8 schools Jefferson-Houston. Total does not include the Northern Virginia Juvenile Detention Center.

FY 2025 Actual Special Education Enrollment

School Division	Unduplicated Special Education Enrollment			Total	Total Special Education Services
	Preschool	Level 1	Level 2 (50% or more of time)		
Alexandria City	215	1,323	482	2,020	N/A
Arlington County¹	309	2,577	1,384	4,270	5,425
Fairfax County²	3,118	12,891	14,561	30,570	51,931
Falls Church City³	37	278	73	388	Data not available
Loudoun County	552	7,703	2,508	10,763	13,632
Manassas City³	61	571	203	835	Data not available
Manassas Park City	59	350	118	527	577
Prince William County³	745	8,175	2,994	11,914	Data not available

¹ Arlington Public Schools preschool special education enrollment includes dual enrolled students and students receiving preschool special education community-based services.

² Fairfax County Public Schools enrollment does not include students served at adult high school, private school, homeschool, or through contract services.

³ Falls Church City, Manassas City, and Prince William County public schools do not report a duplicated special education student services count.

FY 2026 Approved Special Education Enrollment

School Division	Unduplicated Special Education Enrollment				Total Special Education Services
	Preschool	Level 1	Level 2 (50% or more of time)	Total	
Alexandria City	262	1,459	608	2,329	N/A
Arlington County¹	425	2,500	2,503	5,428	6,000
Fairfax County²	3,714	12,499	14,970	31,183	52,410
Falls Church City³	37	278	73	388	Data not available
Loudoun County	538	8,003	2,606	11,147	54,732
Manassas City³	61	571	203	835	Data not available
Manassas Park City	59	350	118	527	577
Prince William County³	915	8,011	3,082	12,008	Data not available

¹ Arlington Public Schools preschool special education enrollment does not include dual enrolled students but includes students receiving preschool special education community-based services.

² Fairfax County Public Schools enrollment does not include students served at adult high school, private school, homeschool, or through contract services.

³ Falls Church City, Manassas City, and Prince William County public schools do not report a duplicated special education student count.

FY 2026 Expenditure Data Definitions

Operating Fund or Budgeted Current Expenditures:

The data in this category include all funds for day-to-day expenditures for operation of the school system such as regular and special education instruction; may include grants such as Head Start, ESSA, Impact Aid, Perkins, and grants associated with IDEA; transportation costs including costs for new and replacement buses; and building maintenance for educational programs. Budgeted current expenditures also include the employer's share of employee benefits whether paid by the school district, municipality, or the state. The expenditures are typically funded in the school operating fund.

Construction and Renovation:

This category includes all expenditures (which are typically funded in a capital improvements fund or budget) for land, new construction, major renovations, and relocatable classrooms, whether funded by the school district, municipality, county, or state through bond sales or "pay-as-you-go" expenditures.

Debt Service:

This category includes all payments for principal and interest on long-term debt whether paid by the school district, municipality, county, or state.

Food Service:

This data includes all expenditures for the school food services program regardless of the funding source (federal, state, and local subsidies; and food sales).

Other Governmental Funds:

This category includes other Governmental Funds expenditures not included elsewhere, such as:

- Grants budgeted in a fund other than those listed previously
- Adult education, defined as any remedial, enrichment, or makeup course or program offered outside of the regular school year
- Summer school, defined as any remedial, enrichment, or makeup course or program offered outside of the regular school year
- Other expenditures not defined elsewhere and defined within the chart

FY 2026 Approved Fund Expenditures

School Division	Operating Fund ¹	Construction Fund	Debt Service	Food Fund	Other Governmental Funds ²	Total Expenditures ³
Alexandria City	\$372,499,308	\$28,841,800	\$47,834,265	\$11,671,618	\$7,166,270	\$468,013,261
Arlington County	\$713,737,740	\$75,560,901	\$68,907,770	\$14,536,007	\$40,209,625	\$912,952,043
Fairfax County⁴	\$3,937,970,519	\$262,846,013	\$217,866,209	\$139,144,760	\$45,139,006	\$4,602,966,507
Falls Church City	\$69,402,486	\$1,200,000	\$10,324,320	\$1,621,448	\$2,663,200	\$85,211,454
Loudoun County	\$1,994,989,373	\$129,760,000	\$153,357,190	\$53,382,342	\$10,002,000	\$2,341,490,905
Manassas City	\$150,473,987	\$27,040,000	\$930,542	\$5,580,326	\$0	\$184,024,855
Manassas Park City	\$60,070,642	\$2,155,000	\$5,533,361	\$2,428,706	\$220,507	\$70,408,216
Prince William County	\$1,796,437,451	\$242,590,143	\$122,952,227	\$67,170,595	\$4,840,506	\$2,233,990,922

¹ Funds for entitlement grants are included in Operating Funds, even for districts that do not include those expenditures in their operating funds.

² Includes Adult Education, Summer School, competitive grants, and other. Numbers will not necessarily match the approved operating budget.

³ Governmental Funds only - excludes Proprietary and Fiduciary Funds.

⁴ Fairfax County Public Schools operating fund excludes transfers to other funds of \$53.0 million.

FY 2026 Sources of Revenue¹

School Operating Fund

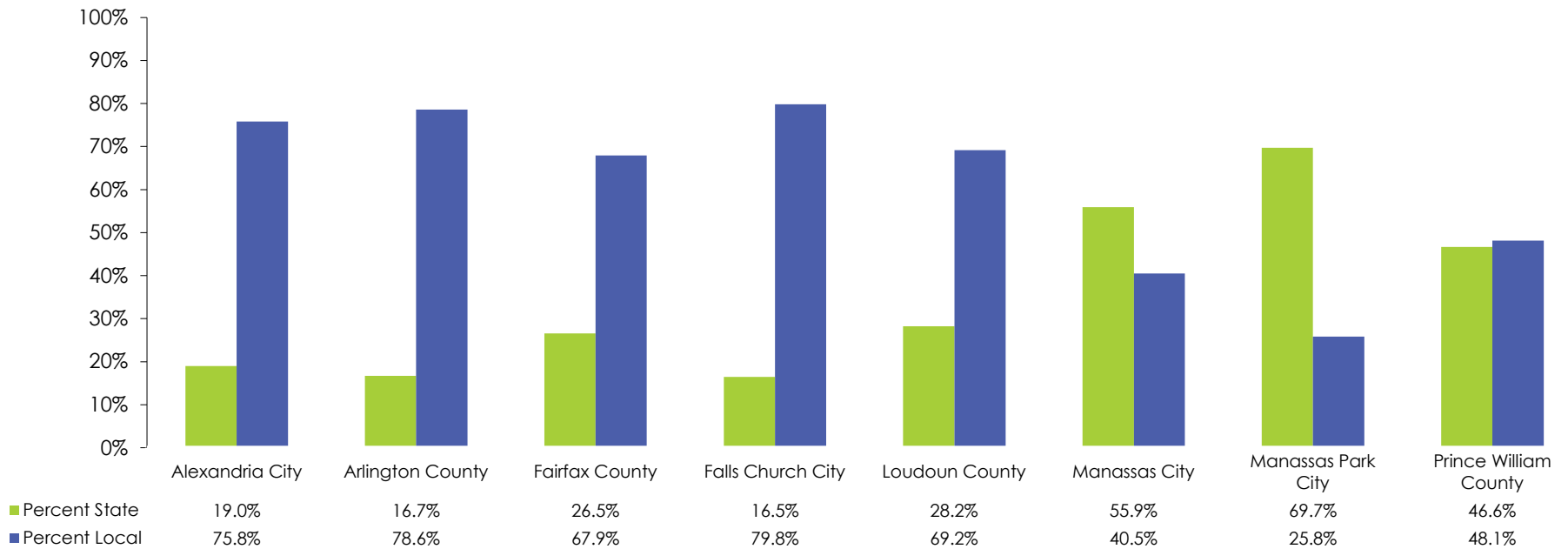
School Division	Federal		State		Local		Beginning Balance		Other		Total
	Amount	Percent of Total	Amount	Percent of Total	Amount	Percent of Total	Amount	Percent of Total	Amount	Percent of Total	
Alexandria City²	\$10,874,092	2.9%	\$70,733,738	19.0%	\$282,384,561	75.8%	\$6,271,916	1.7%	\$2,235,000	0.6%	\$372,499,307
Arlington County	\$14,261,085	2.0%	\$119,183,079	16.7%	\$560,830,352	78.6%	\$16,295,524	2.3%	\$3,167,700	0.4%	\$713,737,740
Fairfax County	\$99,784,219	2.5%	\$1,056,403,603	26.5%	\$2,703,050,892	67.9%	\$28,106,217	0.7%	\$91,679,413	2.3%	\$3,979,024,344
Falls Church City	\$664,542	1.0%	\$11,433,674	16.5%	\$55,380,284	79.8%	\$450,000	0.6%	\$1,473,986	2.1%	\$69,402,486
Loudoun County	\$27,541,545	1.4%	\$563,519,447	28.2%	\$1,379,949,364	69.2%	\$12,000,000	0.6%	\$11,979,017	0.6%	\$1,994,989,373
Manassas City	\$4,339,621	2.9%	\$84,155,908	55.9%	\$60,909,458	40.5%	\$0	0.0%	\$1,069,000	0.7%	\$150,473,987
Manassas Park City	\$1,804,532	3.0%	\$41,861,939	69.7%	\$15,505,573	25.8%	\$533,598	0.9%	\$365,000	0.6%	\$60,070,642
Prince William County	\$48,340,517	2.7%	\$847,869,952	46.6%	\$874,561,094	48.1%	\$40,000,000	2.2%	\$6,815,428	0.4%	\$1,817,586,991

¹ Funds for entitlement grants are included here under the School Operating Fund for consistency with other districts, although some districts may not consider these funds as part of their operating funds.

² Alexandria City Public Schools State revenue includes the removal of the Adult Education and Summer programs. Total revenue does not match SOF expenditures due to rounding.

FY 2026 Sources of Revenue

Percent of Total Operating Fund



WABE 2026

FY 2026 Local Funding Effort

School Division	City/County General Fund Amount	City/County Approved Disbursements to School Operating Funds	Percent of City/County General Fund	City/County Approved Disbursements to School Debt Service	Percent of City/County General Fund	Total City/County Approved Disbursements to Schools	Percent of City/County General Fund
Alexandria City	\$956,449,705	\$282,384,561	29.5%	\$47,834,265	5.0%	\$330,218,826	34.5%
Arlington County	\$1,658,568,194	\$579,281,765	34.9%	\$68,100,012	4.1%	\$647,381,777	39.0%
Fairfax County*	\$5,710,759,192	\$2,718,650,892	47.6%	\$215,628,432	3.8%	\$2,934,279,324	51.4%
Falls Church City	\$133,259,318	\$55,487,784	41.6%	\$10,324,330	7.7%	\$65,812,114	49.4%
Loudoun County	\$2,994,028,000	\$1,379,949,364	46.1%	\$153,357,190	5.1%	\$1,533,306,554	51.2%
Manassas City	\$158,374,000	\$62,949,458	39.7%	\$930,542	0.6%	\$63,880,000	40.3%
Manassas Park City	\$81,918,239.87	\$15,505,573	18.9%	\$5,533,361	6.8%	\$21,038,934	25.7%
Prince William County	\$1,817,586,991	\$873,061,094	48.0%	\$120,791,328	6.6%	\$993,852,422	54.7%

*Fairfax County Public Schools includes \$15.6 million for infrastructure replacement and upgrades.

FY 2026 Approved Staffing Ratios

Base Teacher Staffing Ratio

School Division	Kindergarten	Elementary		Middle / Intermediate	Secondary / High
Alexandria City ¹	22.0	Grades 1-2	24.0	N/A	N/A
		Grades 3-5	26.0		
Arlington County ²	23.0	Grade 1	20.0	See note ²	25.9
		Grades 2-3	22.0		
		Grades 4-5	24.0		
Fairfax County ^{3,4}	25.0			28.9	32.0
Falls Church City	22.0	Grades 1-2	22.0	24.0	24.0
		Grades 3-5	24.0		
Loudoun County	22.0		22.0	23.7	23.7
Manassas City	22.0	Grades 1-3	22.0	28.0	28.0
		Grades 4	28.0		
Manassas Park City	22.0	Grades 1-3	22.0	24.0	25.0
		Grades 4-5	25.0		
Prince William County	24.0	Grades 1-3	24.0	21.0	21.3
		Grades 4-5	25.0		

¹ Alexandria City Public Schools does not allocate positions based on staffing ratios for middle and high school classrooms. Staffing is determined by course enrollment.

² Arlington County Public Schools core staffing for middle/intermediate and secondary/high schools provide 4.0 core positions to the number of teams per grade level. More information can be found at <https://www.apsva.us/budget/planning-factors/>

³ Fairfax County Public Schools staffing ratios take into account the number of students eligible for free and reduced-priced meals and ESOL services. Additional teacher positions are allocated from the staffing reserve to help eliminate class size of 30 and above in elementary schools. For a complete listing of staffing formulas, see the appendix of the FY 2026 Approved Budget.

⁴ Fairfax County Public Schools elementary ratio is 24, 25, or 26 based on enrollment in grades 1-6.

FY 2026 Average Class Size¹

School Division	Students per Classroom Teacher ²			Students per Teacher-Scale Position ³		
	Elementary	Middle / Intermediate	Secondary / High	Elementary	Middle / Intermediate	Secondary / High
Alexandria City⁴	16.4	22.9	26.6	9.7	16.3	19.6
Arlington County	21.4	19.3	19.0	9.4	14.9	15.6
Fairfax County⁵	21.5	25.3	25.8	13.3	19.8	20.3
Falls Church City	17.6	21.5	21.9	10.3	15.1	15.1
Loudoun County	21.3	21.7	24.0	12.5	17.1	19.5
Manassas City	19.2	28.0	26.3	10.9	15.7	17.2
Manassas Park City	21.6	23.6	26.1	9.5	15.3	17.8
Prince William County	21.1	29.8	33.6	11.8	17.1	18.7

¹ Chart excludes teachers and students in Pre-K, kindergarten, alternative schools, and self-contained special education.

² Classroom teachers are positions used to determine class size.

³ Students per teacher-scale positions include classroom teachers and other teachers such as ESOL/ESL, librarians, reading, coaches, mentors, music, art, physical education, etc.

⁴ Alexandria City Public Schools elementary classroom teacher count includes student improvement FTEs.

⁵ Fairfax County Public Schools allocates teacher positions from the staffing reserve to help eliminate class size of 30 and above in elementary schools.

FY 2026 Kindergarten Students Per Teacher¹

School Division	Number of Schools Offering Full-Day Kindergarten ²			Students per Classroom
	Full-Day	Total	% Full-Day	Full-Day
Alexandria City	14	14	100.0%	21.0
Arlington County	25	25	100.0%	20.1
Fairfax County	138	138	100.0%	21.9
Falls Church City	1	1	100.0%	18.0
Loudoun County	61	61	100.0%	21.0
Manassas City	5	5	100.0%	20.5
Manassas Park City	1	1	100.0%	21.5
Prince William County	62	62	100.0%	22.8

¹ Excludes Pre-K teachers and students and self-contained special education teachers and students.

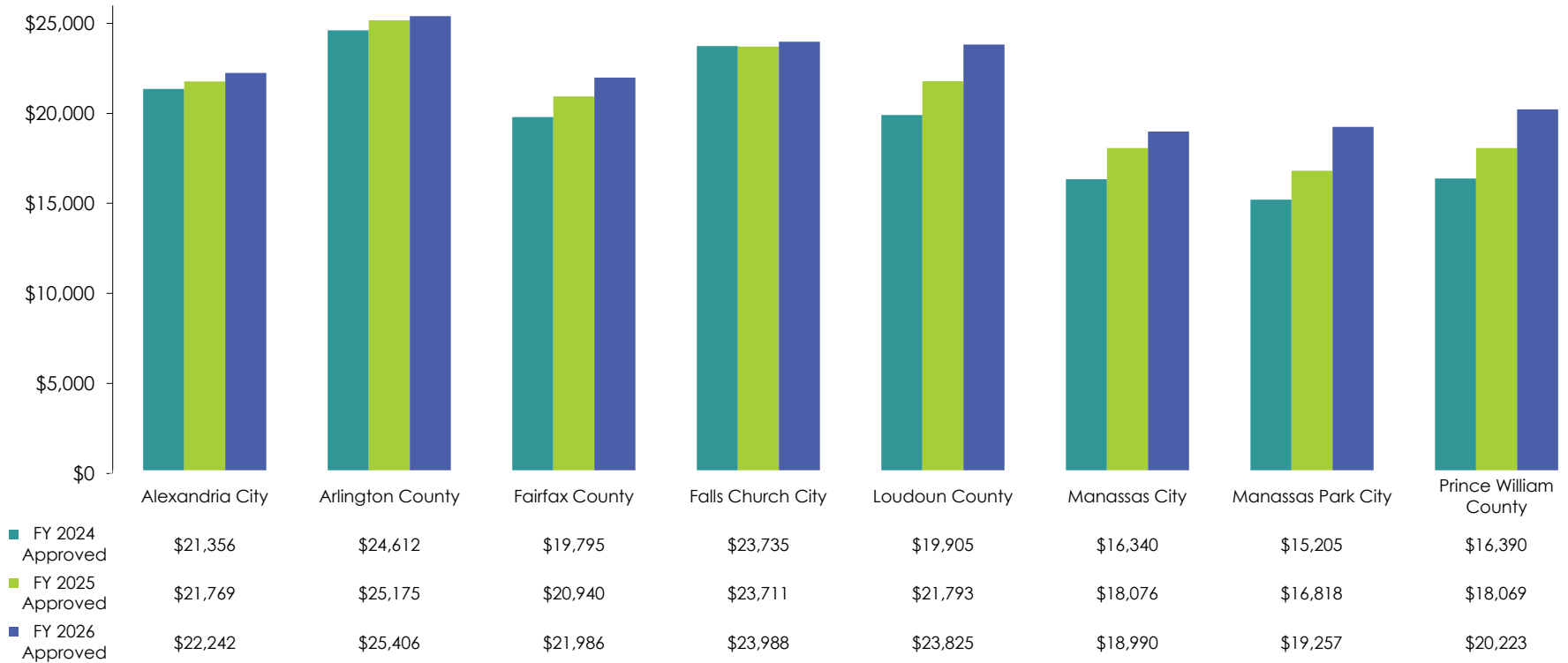
² All participating divisions offer 100% full day programs.

Cost Per Pupil*

School Division	FY 2024 Approved	FY 2025 Approved	FY 2026 Approved
Alexandria City	\$21,356	\$21,769	\$22,242
Arlington County	\$24,612	\$25,175	\$25,406
Fairfax County	\$19,795	\$20,940	\$21,986
Falls Church City	\$23,735	\$23,711	\$23,988
Loudoun County	\$19,905	\$21,793	\$23,825
Manassas City	\$16,340	\$18,076	\$18,990
Manassas Park City	\$15,205	\$16,818	\$19,257
Prince William County	\$16,390	\$18,069	\$20,223

* Uniform formulas were developed by the WABE committee for consistency area wide. These numbers are comparable; however, the cost per pupil reported here may differ from that reported in individual districts' budget documents or other reports.

Cost Per Pupil



WABE 2026

FY 2026 Authorized Position Definitions

(for charts on pages 34 - 37)

School-Based Positions

Teachers:	Includes all instructors under contract, regular classroom teachers, special education teachers, ESOL, coaches, mentors, vocational education teachers, speech therapists, physical therapists, school counselors, librarians, homebound teachers under contract, music, physical education, and itinerant teachers
School-Based Administrators:	Includes principals, assistant principals, student services directors, and student activity directors
Instructional Assistants:	Includes instructional aides and teacher aides
Educational Specialists:	Includes program and educational specialists (not central office curriculum development), school-based technology specialists, instructional coaches, social workers, and psychologists
Nonmanagement/All Others:	Includes school clerical staff, custodial staff, and other school-based support positions

Nonschool-Based Positions

Technical/Support:	Includes accountants, financial analysts, personnel analysts, management analysts, computer programmers and analysts, professional engineers, and architects
Management:	Includes directors, senior managers, senior analysts, department administrators and supervisors, special assistants, executive assistants, and area administrators
Educational Specialists:	Includes curriculum specialists and program specialists that are nonschool-based (central office curriculum development)
Clerical:	Includes nonschool-based clerical staff
Custodial/Maintenance:	Includes nonschool-based custodial, maintenance, print shop, and warehouse employees
Leadership Team/Cabinet	Includes division, deputy, associate, assistant, area superintendents, and chiefs

FY 2026 Authorized Positions¹

School Operating Fund

	Alexandria City	Arlington County	Fairfax County	Falls Church City	Loudoun County
School-Based Positions					
Teachers	1,444.7	2,937.3	16,196.5	246.3	7,574.5
School-Based Administrators ²	87.0	134.7	749.3	15.0	451.0
Educational Specialists	225.0	141.0	742.0	33.2	628.5
Instructional Assistants	247.0	676.4	3,524.9	63.9	1,800.6
Nonmanagement/All Others ²	212.9	589.3	2,888.8	51.0	1,355.1
Total School-Based Positions	2,216.6	4,478.6	24,101.6	409.4	11,809.7
Nonschool-Based Positions					
Leadership Team	10.0	11.0	25.0	6.0	13.0
Technical/Support	75.2	109.9	865.4	6.0	332.0
Management	83.5	92.0	267.0	13.0	321.0
Educational Specialists	24.0	62.5	206.0	3.0	48.0
Office Support Staff	30.9	53.8	178.5	2.5	61.0
Custodial/Maintenance	18.0	74.5	402.0	7.0	300.0
Total Nonschool-Based Positions	241.6	403.6	1,943.8	37.5	1,075.0
TOTAL AUTHORIZED POSITIONS³	2,458.2	4,882.3	26,045.4	446.9	12,884.7
(School Based + Non-School Based)					
Other Operating Fund Positions⁴	165.4	243.0	1,675.4	34.0	810.0
Total Non-Operating Fund Positions⁵	230.0	164.3	521.0	36.0	449.5

¹ Numbers may not add due to rounding.

² See page 36 for further details.

³ Entitlement grant positions are included here although these positions are not part of the School Operating Fund.

⁴ Includes bus drivers, bus drivers' aides, and cafeteria staff (Fairfax County Public Schools contracts for bus drivers and aides).

⁵ Includes all positions funded in Other Funds.

FY 2026 Authorized Positions¹

School Operating Fund

	Manassas City	Manassas Park City	Prince William County
School-Based Positions			
Teachers	660.6	284.0	7,591.6
School-Based Administrators ²	28.0	11.0	368.0
Educational Specialists	21.5	23.0	381.5
Instructional Assistants	119.0	67.0	1,367.2
Nonmanagement/All Others ²	167.8	34.0	1,726.7
Total School-Based Positions	996.9	419.0	11,435.0
Nonschool-Based Positions			
Leadership Team	2.0	4.0	18.0
Technical/Support	22.0	11.0	419.0
Management	32.0	7.0	201.5
Educational Specialists	24.0	16.0	191.0
Office Support Staff	12.6	6.0	86.0
Custodial/Maintenance	11.8	3.0	312.0
Total Nonschool-Based Positions	104.3	47.0	1,227.5
TOTAL AUTHORIZED POSITIONS³	1,101.3	466.0	12,662.5
(School Based + Non-School Based)			
Other Operating Fund Positions⁴	102.4 ⁶	45.0	960.7
Total Non-Operating Fund Positions⁵	0.0	33.0	710.7

¹ Numbers may not add due to rounding.

² See page 37 for further details.

³ Entitlement grant positions are included here although these positions are not part of the School Operating Fund.

⁴ Includes bus drivers, bus drivers' aides, and cafeteria staff.

⁵ Includes all positions funded in Other Funds.

⁶ Manassas City Public Schools also includes transportation operations specialist, dispatcher, and nutritionist.

FY 2026 School-Based Positions - Details

	Alexandria City ¹	Arlington County	Fairfax County ³	Falls Church City	Loudoun County ⁴
Administrators					
Principals	19.0	40.0	199.0	6.0	101.0
Assistant Principals	61.0	66.0	465.0	6.0	154.0
Student Services Directors	4.0	9.0	54.0	1.0	21.0
Student Activity Directors	3.0	4.5	25.0	1.0	0.0
Other	0.0	15.2	6.3	1.0	175.0
Nonmanagement / All Others					
School Office Staff	60.0	188.2	993.5	17.0	406.0
Custodial Staff	33.0	235.5	1,423.0	28.0	696.0
Noninstructional Specialists	0.0	58.8	199.0	0.0	1.0
Security ²	26.0	44.0	156.0	1.0	99.0
Other	93.9	62.8	117.3	5.0	153.1

¹ Alexandria City Public Schools includes registrar, library media assistant, technician, family liaison, clinical assistant, school nurse, and translator within nonmanagement (other).

² Arlington County Public Schools has 38.0 school-based school safety coordinator positions in the Operating Fund. An additional 1.0 school-based school safety coordinator position is budgeted in Other Funds.

³ Fairfax County Public Schools includes family liaisons in nonmanagement (other).

⁴ Loudoun County Public Schools includes health clinic specialists, nurses, school nurse assistants, and school plant engineers in nonmanagement (other).

FY 2026 School-Based Positions - Details

	Manassas City	Manassas Park City	Prince William County
Administrators			
Principals	9.0	4.0	100.0
Assistant Principals	16.0	6.0	208.0
Student Services Directors	2.0	0.0	34.0
Student Activity Directors	1.0	1.0	26.0
Other	0.0	0.0	0.0
Nonmanagement / All Others			
School Office Staff	54.3	23.0	651.0
Custodial Staff	56.5	0.0	516.9
Noninstructional Specialists	0.0	0.0	172.8
Security	14.0	2.0	203.0
Other	43.0	9.0	183.0

FY 2026 Salary Information

Teacher and Instructional Assistant Salaries

School Division	Scheduled Days	Unscheduled Days	Hours Per Day	Teacher Salary					Instructional Assistant	
				Step 1 + Bachelors Degree	Average ¹	Step 1 + Masters Degree	Middle Masters Degree	Maximum	Beginning Hourly	Maximum Hourly
Alexandria City²	195	0	7.25	\$57,207	\$95,848	\$64,988	\$96,016	\$135,145	\$19.51	\$43.85
Arlington County³	194	6	7.50	\$57,810	\$98,053	\$66,186	\$100,112 ⁴	\$136,019 ⁴	\$25.18	\$45.43
Fairfax County	195	0	7.50	\$61,747	\$94,186	\$67,921	\$99,634	\$131,353	\$23.09	\$41.15
Falls Church City	193	7	7.50	\$60,003	\$89,930	\$66,432	\$103,603	\$140,571	\$18.63	\$40.59
Loudoun County	194	3	7.00	\$60,553	\$95,792	\$66,562	\$100,854	\$128,466	\$21.40	\$39.51
Manassas City	193	7	7.50	\$59,928	\$90,773	\$66,996	\$91,232	\$142,886	\$20.22	\$35.67
Manassas Park City	193	7	7.50	\$58,102	\$74,990	\$64,102	\$80,698	\$132,378	\$20.32	\$37.66
Prince William County	195	0	7.00	\$62,562	\$89,088	\$68,562	\$99,724	\$152,763	\$20.40	\$44.32

¹ The average teacher salary for Falls Church and Loudoun Public Schools reflects average teacher salary for the operating fund, while the average teacher salary for the remaining divisions reflects average teacher salary for all funds.

² Alexandria City Public Schools has three salary scales: Bachelor's with 23 steps, Masters with 24 steps, and Master +30 credits with 24 steps. The beginning hourly rate is for an Instructional Assistant I and maximum hourly rate is for an Instructional Assistant IV position.

³ Arlington Public Schools middle of the teacher master's degree salary schedule for retirement eligible employees. For comparison purposes, the middle salary assumes a step progression each year; however an actual step progression varies each year.

⁴ Arlington Public Schools salaries for non-retirement eligible and Advancement Program (CAP) follow a different salary schedule. For detailed information see Arlington Public Schools pay plan on the following link: <http://www.apsva.us/careers-aps/>

FY 2026 Salary Information

Bus Driver and School Board Salaries

School Division	Bus Driver Salary		Members	School Board	
	Beginning Hourly	Maximum Hourly		Member Salary	Chairperson Salary
Alexandria City*	\$24.36	\$50.83	9	\$15,000	\$17,000
Arlington County	\$26.83	\$49.60	5	\$51,500	\$53,500
Fairfax County	\$27.61	\$46.99	12	\$48,000	\$50,000
Falls Church City	\$24.99	\$48.34	7	\$3,600	\$6,000
Loudoun County	\$27.81	\$51.88	9	\$28,565	\$30,565
Manassas City	\$25.18	\$52.62	7	\$12,000	\$13,100
Manassas Park City	\$23.01	\$42.64	5	\$3,000	\$3,500
Prince William County	\$26.42	\$57.39	8	\$28,570	\$30,723

*Alexandria City Public Schools has a career ladder for bus drivers. The beginning hourly reflects the first step for a bus driver I and the maximum hourly reflects the last step for a bus driver III.

Student Demographics

School Division	Graduation Information			FY 2025 Actual Free or Reduced Price Lunch Eligibility	
	% of 2024 Graduates Going on to Postsecondary Education ²	Class of 2025 Cohort Graduation Four-Year Rate ⁴	Class of 2025 Cohort Dropout Four-Year Rate ⁴	Students Eligible	Percent of District Enrollment
Alexandria City	77.8%	82.8%	9.7%	7,624	46.5%
Arlington County ¹	83.0%	92.6%	5.8%	See note ¹	See note ¹
Fairfax County ³	89.3%	93.3%	5.1%	65,692	36.5%
Falls Church City	97.6%	99.6%	0.5%	308	11.3%
Loudoun County	90.5%	96.6%	2.1%	19,142	23.4%
Manassas City ⁵	77.6%	84.5%	12.7%	See note ⁵	See note ⁵
Manassas Park City ⁵	74.0%	86.6%	6.9%	See note ⁵	See note ⁵
Prince William County	80.8%	94.2%	4.0%	26,383	29.2%

¹ Some schools are participating in the Community Eligibility Provision (CEP) program where all students attending the CEP schools receive meals at no cost. Eligibility data for individual students is not collected at CEP schools. APS website <https://www.apsva.us/statistics/free-and-reduced-price-meals> for additional information on actual data listed.

² Post-Secondary data for Virginia school divisions is from the Virginia Department of Education's website. The VDOE website is located at <https://www.doe.virginia.gov/data-policy-funding/data-reports/statistics-reports/graduation-completion-dropout-postsecondary-data/high-school-graduates-completers/high-school-graduates-completers-archive-data>

³ Fairfax County Public Schools post-secondary education percentage reflects an updated submission to VDOE.

⁴ Graduation data for Virginia school divisions is from the Virginia Department of Education's website at https://p1pe.doe.virginia.gov/apex/f?p=246:1:::::p_session_id,p_application_name:-1177608584449627526,cohortgrad

⁵ All MPCS and MCPS schools in this School Food Authority (SFA) operate under the USDA Community Eligibility Provision (CEP).

SAT Scores

School Year 2024-2025

School Division	Average Math	Average Evidence - Based Reading and Writing	Total	Percent of Seniors Taking Tests
Alexandria City	484	514	998	65.0%
Arlington County	598	611	1209	57.0%
Fairfax County	587	596	1183	65.7%
Falls Church City	615	651	1266	73.0%
Loudoun County	585	602	1187	61.3%
Manassas City*	525	539	1064	
Manassas Park City	570	586	1156	12.0%
Prince William County	482	503	985	75.2%

*Data not available at time of compilation.

Student Breakfast and Lunch Prices

School Division	Breakfast Prices			Lunch Prices		
	Elementary	Middle	High	Elementary	Middle	High
Alexandria City	\$2.10	\$2.10	\$2.10	\$3.25	\$3.45	\$3.45
Arlington County	\$2.35	\$2.35	\$2.35	\$3.45	\$3.70	\$3.70
Fairfax County	\$1.75	\$1.75	\$1.75	\$3.25	\$3.50	\$3.50
Falls Church City	\$2.50	\$2.50	\$2.50	\$3.50	\$4.25	\$4.25
Loudoun County	\$2.50	\$2.50	\$2.50	\$3.45	\$3.55	\$3.55
Manassas City*	\$0.00	\$0.00	\$0.00	\$0.00	\$0.00	\$0.00
Manassas Park City*	\$0.00	\$0.00	\$0.00	\$0.00	\$0.00	\$0.00
Prince William County	\$1.70	\$1.70	\$1.70	\$2.70	\$2.85	\$2.95

*Manassas City Public Schools and Manassas Park City Schools are Community Eligibility Provision (CEP) schools and provide breakfast and lunch at no cost.

Teacher Cost Comparison

Salary and benefits costs for a teacher position based on a hypothetical annual salary of \$65,000 and based on the average teacher salary.

School Division	FY 2026 Annual Employer Cost for Hypothetical Teacher Salary	FY 2026 Annual Employer Cost for Average Teacher Salary
Alexandria City	\$107,696	\$146,339
Arlington County	\$103,337	\$144,875
Fairfax County	\$109,378	\$147,822
Falls Church City	\$102,549	\$133,778
Loudoun County	\$104,980	\$143,553
Manassas City	\$103,494	\$135,779
Manassas Park City	\$98,430	\$110,944
Prince William County	\$101,686	\$132,853

WABE 2026

Salary and Benefits Summary

Alexandria City Public Schools

	Percent of Hypothetical Salary	FY 2026 Annual Employer Cost for Hypothetical Teacher Salary	Percent of Average Salary	FY 2026 Annual Employer Cost for Average Teacher Salary
Salary		\$65,000		\$95,848
Benefits¹				
Social Security	7.65%	\$4,973	7.65%	\$7,332
Retirement				
Virginia Retirement System (VRS)	15.23%	\$9,900	15.23%	\$14,598
VRS Retiree Health Credit	1.21%	\$787	1.21%	\$1,160
Life Insurance	1.18%	\$767	1.18%	\$1,131
Health Insurance: POS - Family Coverage ²	39.09%	\$25,410	26.51%	\$25,410
Name: United HealthCare POS Choice Plus				
Dental/Vision ³	1.32%	\$860	0.90%	\$860
Total Benefits	65.69%	\$42,696	52.68%	\$50,491
Total Salary and Benefits		\$107,696		\$146,339

¹ There may be other benefits excluded from the benefits listed.

² The plan with the highest participation rate is used for comparison. Alexandria City has a supplemental retirement plan through Principal Financial Group, but there is no employer contribution. Employer contribution is 0% and employee contribution is 100%.

³ Dental costs is based on family coverage.

WABE 2026

Salary and Benefits Summary

Arlington Public Schools

	Percent of Hypothetical Salary	FY 2026 Annual Employer Cost for Hypothetical Teacher Salary	Percent of Average Salary	FY 2026 Annual Employer Cost for Average Teacher Salary
Salary		\$65,000		\$98,053
Benefits¹				
Social Security	7.65%	\$4,973	7.65%	\$7,501
Retirement				
Virginia Retirement System (VRS)	15.23%	\$9,900	15.23%	\$14,933
VRS Retiree Health Credit	1.21%	\$787	1.21%	\$1,186
401 (a) match 0.4% or \$240, whichever is greater	0.40%	\$260	0.40%	\$392
Life Insurance	1.18%	\$767	1.18%	\$1,157
Health Insurance: POS - Family Coverage ²	32.45%	\$21,090	21.51%	\$21,090
Name: CareFirst PPO Low - Family - 30 to 40				
Dental/Vision ³	0.86%	\$561	0.57%	\$561
Total Benefits	58.98%	\$38,337	47.75%	\$46,822
Total Salary and Benefits		\$103,337		\$144,875

¹ There may be other benefits excluded from the benefits listed.

² The plan with the highest participation rate is used for comparison.

³ Dental rates are based on family coverage, vision is covered at 100% by the participating employee.

WABE 2026

Salary and Benefits Summary

Fairfax County Public Schools

	Percent of Hypothetical Salary	FY 2026 Annual Employer Cost for Hypothetical Teacher Salary	Percent of Average Salary	FY 2026 Annual Employer Cost for Average Teacher Salary
Salary		\$65,000		\$94,186
Benefits¹				
Social Security	7.65%	\$4,973	7.65%	\$7,205
Retirement				
Virginia Retirement System (VRS)	15.39%	\$10,004	15.39%	\$14,495
VRS Retiree Health Credit	1.21%	\$787	1.21%	\$1,140
Employees' Supplementary Retirement System of Fairfax County (ERFC)	6.61%	\$4,297	6.61%	\$6,226
Life Insurance	0.86%	\$559	0.86%	\$810
Health Insurance: POS - Family Coverage ² Name: Cigna OAP Medical Plan (includes vision)	34.85%	\$22,650	24.05%	\$22,650
Dental/Vision ³	1.71%	\$1,110	1.18%	\$1,110
Total Benefits	68.27%	\$44,378	56.95%	\$53,636
Total Salary and Benefits		\$109,378		\$147,822

¹ There may be other benefits excluded from the benefits listed.

² The plan with the highest participation rate is used for comparison.

³ Dental costs reflect Aetna PPO plan. Vision costs included in health costs.

WABE 2026

Salary and Benefits Summary

Falls Church City Public Schools

	Percent of Hypothetical Salary	FY 2026 Annual Employer Cost for Hypothetical Teacher Salary	Percent of Average Salary	FY 2026 Annual Employer Cost for Average Teacher Salary
Salary		\$65,000		\$89,930
Benefits¹				
Social Security	7.65%	\$4,973	7.65%	\$6,880
Retirement				
Virginia Retirement System (VRS)	15.23%	\$9,900	15.23%	\$13,696
VRS Retiree Health Credit	1.21%	\$787	1.21%	\$1,088
Life Insurance	1.18%	\$767	1.18%	\$1,061
Health Insurance: POS - Family Coverage ²	32.50%	\$21,123	23.49%	\$21,123
Name: BCBS - The Local Choice 250 Comprehensive				
Total Benefits	57.77%	\$37,549	48.76%	\$43,848
Total Salary and Benefits		\$102,549		\$133,778

¹ There may be other benefits excluded from the benefits listed.

² The plan with the highest participation rate is used for comparison. Dental is combined with health insurance.

WABE 2026

Salary and Benefits Summary

Loudoun County Public Schools

	Percent of Hypothetical Salary	FY 2026 Annual Employer Cost for Hypothetical Teacher Salary	Percent of Average Salary	FY 2026 Annual Employer Cost for Average Teacher Salary
Salary		\$65,000		\$95,792
Benefits¹				
Social Security	7.65%	\$4,973	7.65%	\$7,328
Retirement				
Virginia Retirement System (VRS)	15.23%	\$9,900	15.23%	\$14,589
VRS Retiree Health Credit	1.21%	\$787	1.21%	\$1,159
Life Insurance	1.18%	\$767	1.18%	\$1,130
Health Insurance: POS - Family Coverage ²	33.40%	\$21,710	22.66%	\$21,710
Name: Open Access Plus High (OAP High)				
Dental/Vision	2.84%	\$1,844	1.93%	\$1,844
Total Benefits	61.51%	\$39,980	49.86%	\$47,761
Total Salary and Benefits		\$104,980		\$143,553

¹ There may be other benefits excluded from the benefits listed.

² The plan with the highest participation rate is used for comparison.

WABE 2026

Salary and Benefits Summary

Manassas City Public Schools

	Percent of Hypothetical Salary	FY 2026 Annual Employer Cost for Hypothetical Teacher Salary	Percent of Average Salary	FY 2026 Annual Employer Cost for Average Teacher Salary
Salary		\$65,000		\$90,773
Benefits¹				
Social Security	7.65%	\$4,973	7.65%	\$6,944
Retirement				
Virginia Retirement System (VRS)	15.23%	\$9,900	15.23%	\$13,825
VRS Retiree Health Credit	1.21%	\$787	1.21%	\$1,098
Life Insurance	1.18%	\$767	1.18%	\$1,071
Health Insurance ³ : POS - Family Coverage ²	33.95%	\$22,068	24.31%	\$22,068
Name: Anthem Key Advantage 250 Comprehensive				
Total Benefits	59.22%	\$38,494	49.58%	\$45,006
Total Salary and Benefits		\$103,494		\$135,779

¹ There may be other benefits excluded from the benefits listed.

² The plan with the highest participation rate is used for comparison.

³ Dental and vision insurance are included in health insurance.

WABE 2026

Salary and Benefits Summary

Manassas Park Public Schools

	Percent of Hypothetical Salary	FY 2026 Annual Employer Cost for Hypothetical Teacher Salary	Percent of Average Salary	FY 2026 Annual Employer Cost for Average Teacher Salary
Salary		\$65,000		\$74,990
Benefits¹				
Social Security	7.65%	\$4,973	7.65%	\$5,737
Retirement				
Virginia Retirement System (VRS)	15.23%	\$9,900	15.23%	\$11,421
VRS Retiree Health Credit	1.21%	\$787	1.21%	\$907
Life Insurance	1.18%	\$767	1.18%	\$885
Health Insurance: POS - Family Coverage ²	26.16%	\$17,004	22.68%	\$17,004
Name: Anthem 250 Comp - Family				
Total Benefits	51.43%	\$33,430	47.95%	\$35,954
Total Salary and Benefits		\$98,430		\$110,944

¹ There may be other benefits excluded from the benefits listed.

² The plan with the highest participation rate is used for comparison. Dental and vision insurance are included in health insurance.

WABE 2026

Salary and Benefits Summary

Prince William County Public Schools

	Percent of Hypothetical Salary	FY 2026 Annual Employer Cost for Hypothetical Teacher Salary	Percent of Average Salary	FY 2026 Annual Employer Cost for Average Teacher Salary
Salary		\$65,000		\$89,088
Benefits¹				
Social Security	7.65%	\$4,973	7.65%	\$6,815
Retirement				
Virginia Retirement System (VRS)	17.35%	\$11,278	17.35%	\$15,457
VRS Retiree Health Care Credit	1.21%	\$787	1.21%	\$1,078
403B Max at 15 years	2.00%	\$1,300	2.00%	\$1,782
Life Insurance	1.18%	\$767	1.18%	\$1,051
Health Insurance: POS - Family Coverage ²	25.55%	\$16,608	18.64%	\$16,608
Name: Anthem Blue Cross Blue Shield Enhancement Plan				
Dental/Vision	1.50%	\$974	1.09%	\$974
Total Benefits	56.44%	\$36,686	49.13%	\$43,765
Total Salary and Benefits		\$101,686		\$132,853

¹ There may be other benefits excluded from the benefits listed.

² The plan with the highest participation rate is used for comparison.

WABE 2026

FY 2026 Compensation Accounts (All Funds)

School Division	Full-Time Position Salaries	Other Compensation*	Employee Benefits	Total Compensation	Turnover & Vacancy Savings
Alexandria City	\$239,052,436	\$7,310,645	\$96,805,440	\$343,168,521	(\$6,136,693)
Arlington County	\$474,305,921	\$33,522,961	\$166,413,106	\$674,241,988	(\$3,612,500)
Fairfax County	\$2,252,709,312	\$211,326,808	\$1,184,022,515	\$3,648,058,635	(\$73,021,684)
Falls Church City	\$41,800,000	\$3,200,000	\$18,300,000	\$63,300,000	(\$600,000)
Loudoun County	\$1,194,460,189	\$97,790,354	\$569,680,385	\$1,861,930,928	(\$39,177,832)
Manassas City	\$96,377,842	\$3,697,209	\$35,993,482	\$136,068,533	(\$849,999)
Manassas Park City	\$30,007,989	\$8,978,538	\$12,917,999	\$51,904,526	(\$573,388)
Prince William County	\$1,023,784,083	\$55,055,944	\$408,905,211	\$1,487,745,238	(\$43,861,315)

*Includes hourly and part-time accounts.

Benefit Expense Distribution

Percent Paid by District

School Division	Retirement			Health Insurance				
	Life Insurance	State ¹	Other ²	Point of Service Family	HMO Family	Dental Insurance	Disability Insurance Short-term	Disability Insurance Long-term
Alexandria City³	40.0%	75.3%	0.0%	80.0%	80.0%	57.0%	100.0%	100.0%
Arlington County	100.0%	75.3%	50.0%	71.0%	74.0%	35.0%	100.0%	100.0%
Fairfax County	73.0%	75.3%	68.4%	78.0%	76.8%	70.0%	100.0%	0.0%
Falls Church City	100.0%	75.3%	0.0%	75.0%	75.0%	0.0%	100.0%	100.0%
Loudoun County	100.0%	75.3%	0.0%	82.0%	0.0%	82.0%	100.0%	100.0%
Manassas City	100.0%	75.3%	0.0%	66.9%	79.3%	60.0%	See note ⁴	100.0%
Manassas Park City	100.0%	75.3%	0.0%	63.0%	61.0%	0.0%	0.0%	100.0%
Prince William County	100.0%	75.3%	0.0%	70.0%	74.3%	95.0%	0.0%	0.0%

¹ Virginia Retirement System (VRS) for Virginia school districts.

² The Other category includes supplemental retirement.

³ Alexandria City has a supplemental retirement plan through Principal Financial Group, but there is no employer contribution. Employer contribution is 0% and employee contribution is 100%. Alexandria City dental costs is based on family coverage.

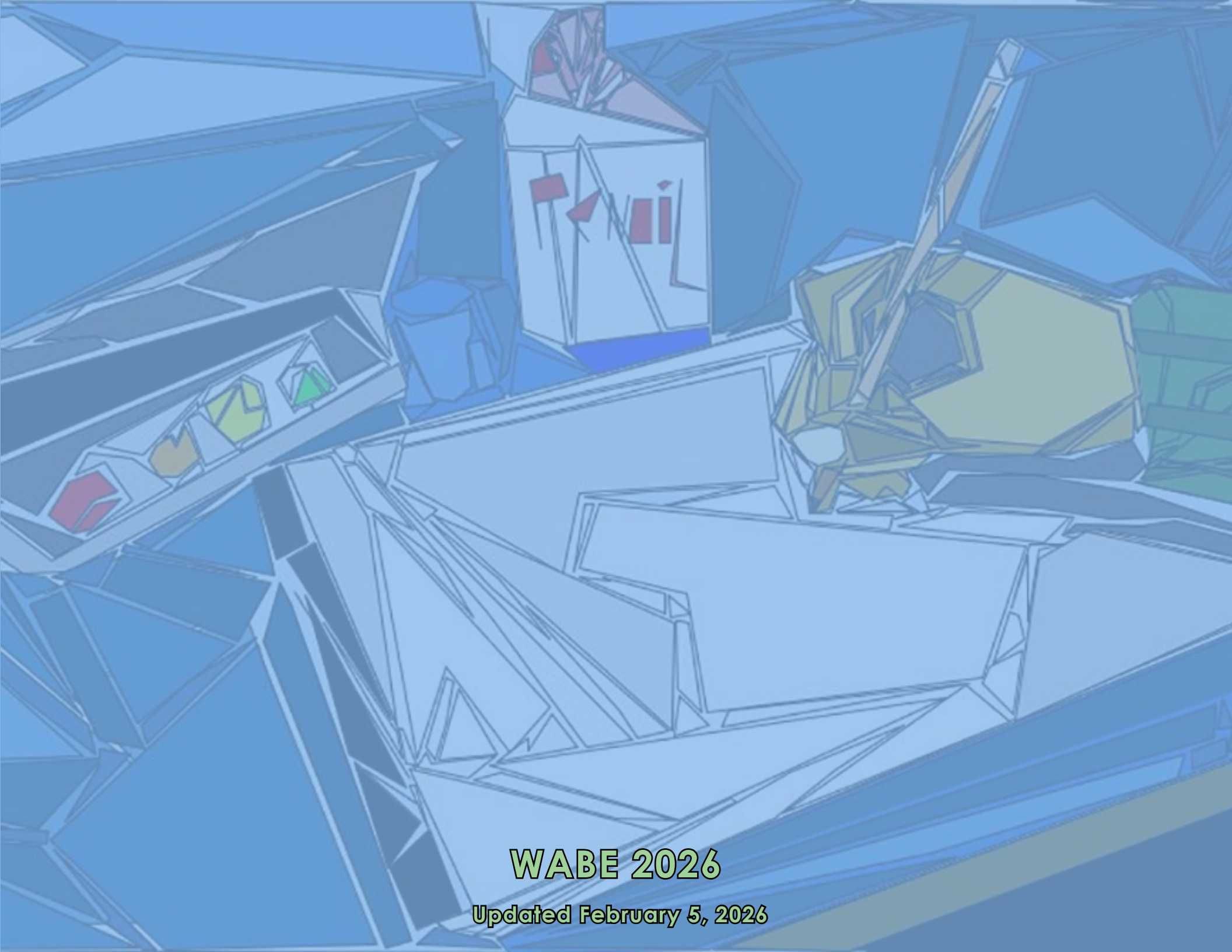
⁴ Short Term Disability: Non VRS members, Plan 1, Plan 2, and first year hybrid: District =0%/Employee=100%. Hybrid members after first year = District 100%/Employee=0%.

Substitute Teacher Pay Rate

School Division	Number of Hours for a Full Day Sub	Short Term			Long Term				
		No Bachelor's Degree	Bachelor's Degree	Licensed Teacher	No Bachelor's Degree	Bachelor's Degree		Licensed Teacher	
		Daily Rate	Daily Rate	Daily Rate	Daily Rate	Daily Rate	Effective Day	Daily Rate	Effective Day
Alexandria City	7.25	\$124.50	\$124.50	\$124.50	\$172.09	\$172.09	10th Day	\$172.09	10th Day
Arlington County	7.00	\$162.22	\$162.22	\$162.22	\$221.20	\$221.20	11th Day	\$221.20	11th Day
Fairfax County ¹	7.00	\$148.54	\$148.54	\$182.98	\$199.64	\$199.64	11th Day	\$229.81	11th Day
Falls Church City	7.50	\$152.77	\$152.77	\$152.77	\$195.20	\$195.20	11th Day	\$250.37	11th Day
Loudoun County ²	7.00	\$135.00	\$135.00	\$135.00	\$200.00	\$200.00	11th Day	\$200.00	11th Day
Manassas City	7.50	\$120.50	\$143.50	\$152.00	\$195.25	\$195.25	1st Day	\$214.25	1st Day
Manassas Park City	7.50	\$150.00	\$165.00	\$165.00	\$190.00	\$190.00	16th Day	\$190.00	16th Day
Prince William County	7.00	\$155.75	\$155.75	\$155.75	\$0.00	\$201.60	11th Day	\$261.10	11th Day

¹ Fairfax County Public Schools long term licensed teacher hourly rate applies to retired teachers.

² Loudoun County Public Schools site-based substitute rate is \$154, high volume daily substitute rate is \$169.12, high volume site-based/long term substitute rate is \$231, registered nurse rate is \$232.88 per day, and health clinic specialist is \$135.00 per day.



WABE 2026

Updated February 5, 2026