

INTERLUDE

Janet Quantrille
Supervisor, Special Programs

Vicki Lyons, Ph.D.
Clinical Advisor

Slide 1

LV1

Lyons, Vicki, 1/20/2012

Mission

- Our mission is to facilitate academic and emotional growth for identified special education students through a combination of educational and therapeutic interventions.



Location

- Elementary program located centrally at one elementary school
- Secondary programs located at each middle and high school



Academic Emphasis

- The emphasis is on academics and integration into regular education, with individualized goals and accommodations for each student as determined by the IEP Committee.



Students

- Interlude students are special education students whose emotional issues and/or behaviors interfere with academic achievement and who need therapy to accomplish their IEP goals. Placement is determined by the IEP Committee.

What distinguishes Interlude?

- Classrooms that use specialized techniques
- Team approach
- Therapy

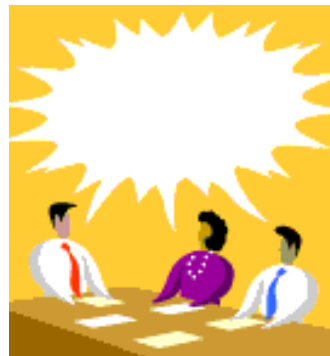
Specialized Techniques

- Positive behavior supports
- Crisis prevention and intervention
- Individualized goals and accommodations



Interlude Team

- Interlude (special education) teacher
- Interlude resource assistant
- Interlude therapist (licensed mental health practitioner)
- Clinical Advisor (licensed clinical psychologist)
- School principal or designee



Team Approach

- Meets weekly for case review/coordination
- Engages in consultation/coordination with non-Interlude school staff, outside professionals, and parents
- Uses specialized classroom techniques (positive behavioral supports, crisis prevention and intervention)

Therapy

- Provided by a licensed mental health practitioner (clinical psychologist, clinical social worker, professional counselor)
- Usually individual but may also be group
- Evidenced-based techniques, primarily cognitive behavioral therapy
- May involve other theory-based techniques
- Weekly peer supervision meetings, chaired by the Clinical Advisor



Transitions

- From elementary to middle school or from middle school to high school—coordinated between the sending and receiving Interlude teams
- From contract placement to Interlude—via the IEP
- After high school to a job or further education—can involve contact with the school transition coordinator and occasionally the Dept. of Human Services

